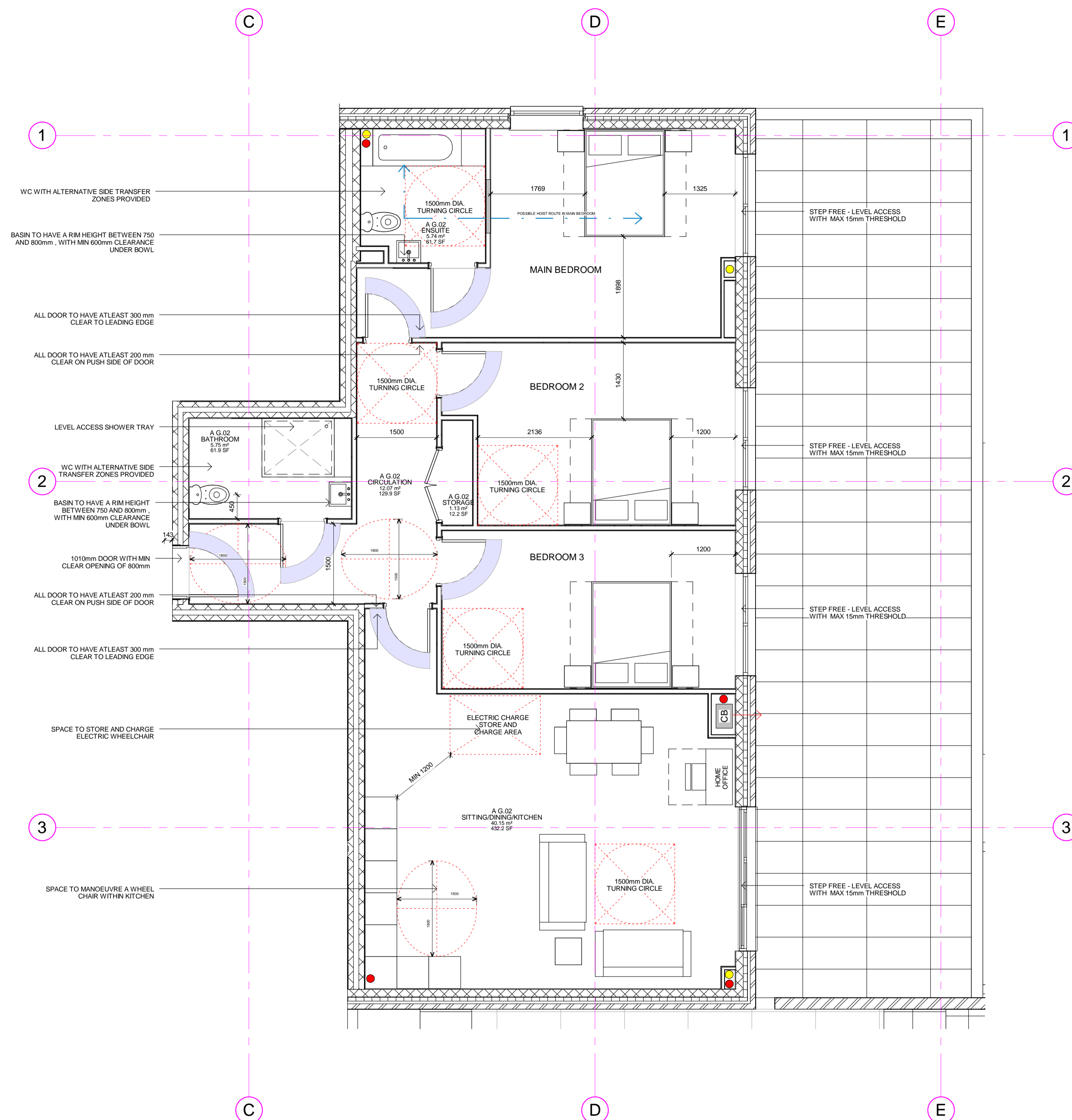


WHEEL CHAIR ACCESSIBLE APARTMENT AG.02

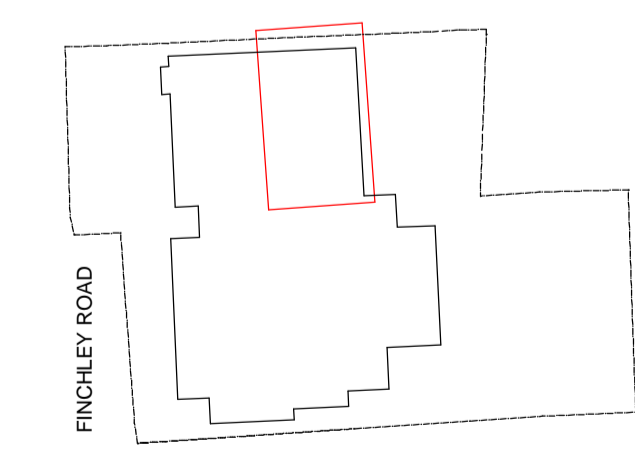
WHEELCHAIR ACCESSIBLE LAYOUT FOR GROUND FLOOR APARTMENT

- 3 Bed 4 Person
- Dwelling has been designed on one level.
 - The main Entrance Door is 1010mm with a min clear opening of 800mm
 - The entrance hall way has a manoeuvring area of 1500mm x 1800mm behind the entrance door
 - A space to store and charge an electric wheelchair is provided in the sitting/dining/kitchen
 - All halls have been built to accommodate and facilitate 90 degree turns
 - All doors in rooms have been designed with 300mm clear on the pull side and 200mm clear on the push side
 - Sufficient turning space has been provided within the kitchen space and the layout has been designed to allow for flexibility of the user
 - All Bedrooms have a 1200 x 1200mm clear space to one side of the bed
 - Bathrooms have been provided to facilitate frontal and side transfer to toilets.
 - Wheelchair accessible bathrooms has a 1500x1500mm manoeuvring space clear of all fitting
 - In all wheelchair accessible bathrooms a drainage gully is to be provided to facilitate the installation of level entry shower (for a shower area of 1000 x 1000mm)
 - Suitable construction is in place to allow for a ceiling hoist within the apartment between main bedroom and bathroom
 - Windows are all operable from a seated position. Handle to be no higher than 1000mm from FFL.



1 AG.02 - WHEEL CHAIR ACCESSIBLE APARTMENT
1 : 50

KEY	RESIDUAL RISK
KEY PLAN	



ORIGINATOR	DRAWING TITLE		
DAVID MILLER ARCHITECTS WWW.DAVID-MILLER.CO.UK	WHEEL CHAIR ACCESSIBLE APARTMENT LAYOUT-SHEET 1 OF 3		
JOB TITLE	JOB NO	STATUS	
368 - 372 FINCHLEY ROAD	282	FOR INFORMATION	
SCALE	DATE	CHECKED	APPROVED
1 : 50	19/12/13	AD	DMA
PROJECT	ORIGIN	ZONE	LEVEL
FIN	DMA	ALL	GND
			GA
			A3
			022
			A