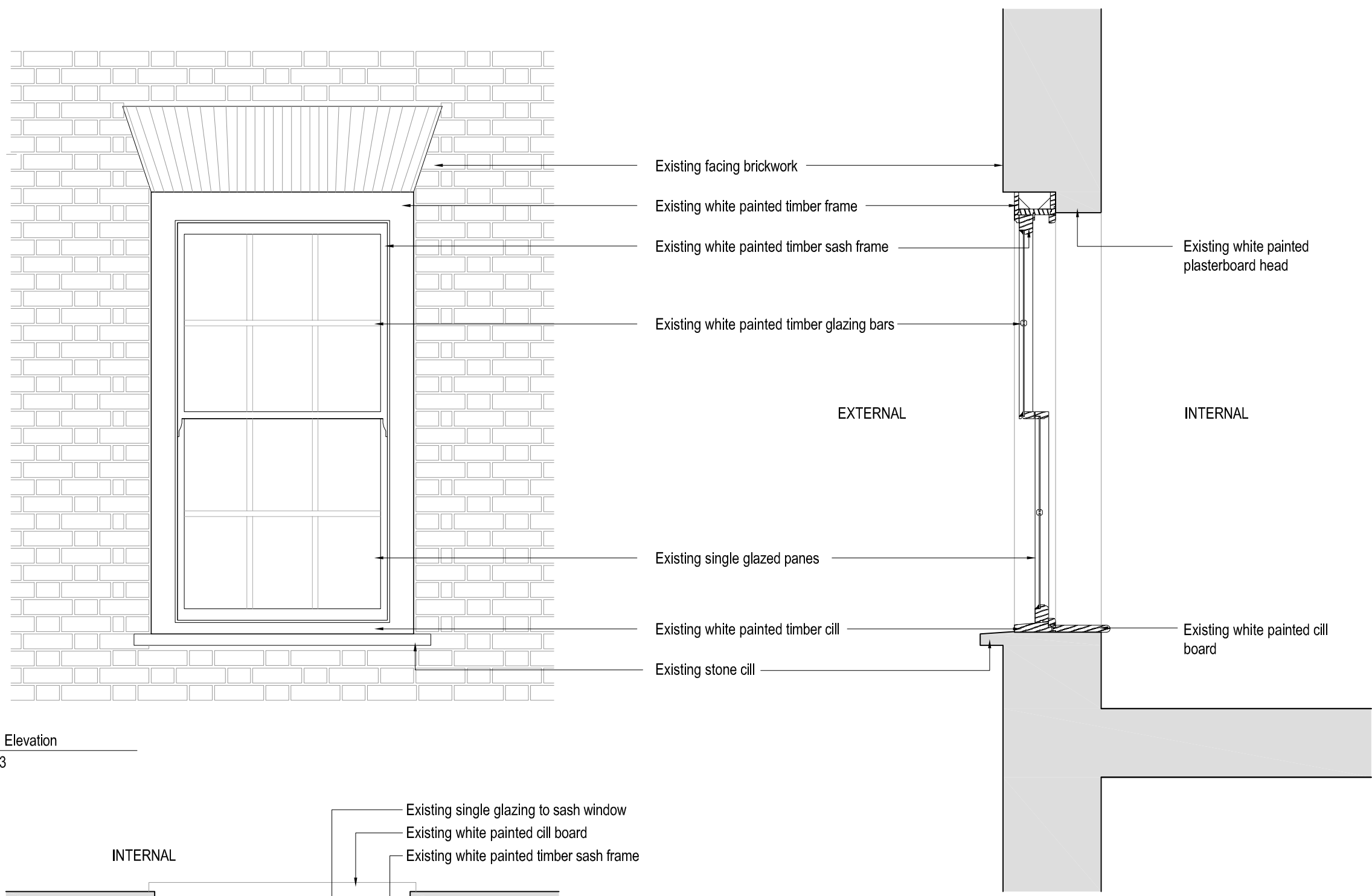
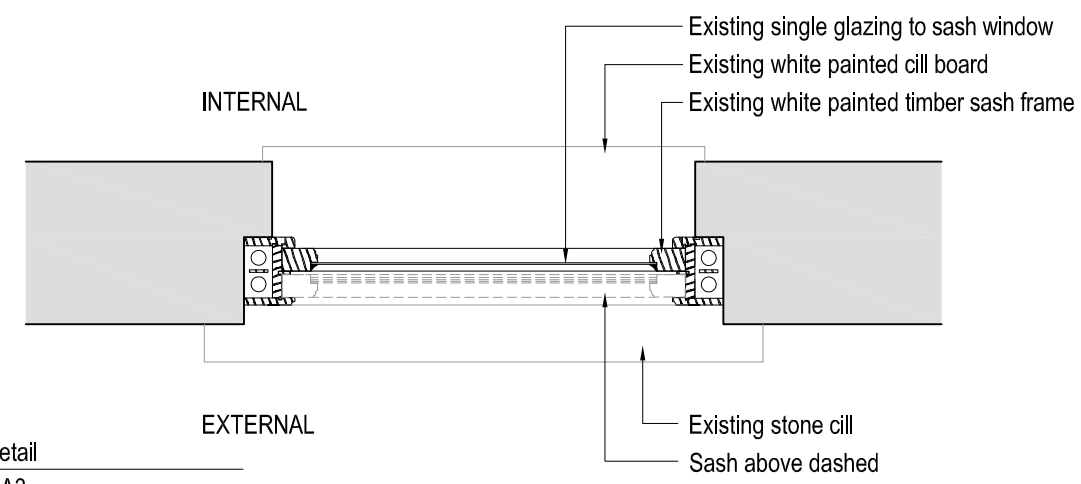


Do not scale from this drawing, except for town planning purposes.
 Work to figured dimensions only.
 This drawing is the property of Brimelow McSweeney Architects and copyright is reserved by them.
 This drawing is issued on condition that it is not copied, used or disclosed by or to any unauthorised person without the prior written consent of Brimelow McSweeney Architects.
 The areas on the drawing have been measured directly from a CAD drawing and have no tolerances added or subtracted.
 The areas have been calculated in accordance with the Code of Measuring Practice, 6th Edition (2007) using the stated options NIA, GIA, GEA. They are approximate and relate to the likely areas of the building at the current state of the design. Any decisions to be made on the basis of these predictions, whether as to project viability, pre-letting, lease agreements and the like, should make allowance for the following:
 - Design development
 - Accurate site survey, site levels and dimensions need to be fully evaluated
 - Allowance for construction methods and building tolerances.
 - Local authority consents

rev	date	drawn by	chkd	description
/	20.12.13	DPF	SE	PLANNING ISSUE



3100 External Elevation
 01 1:20@A3



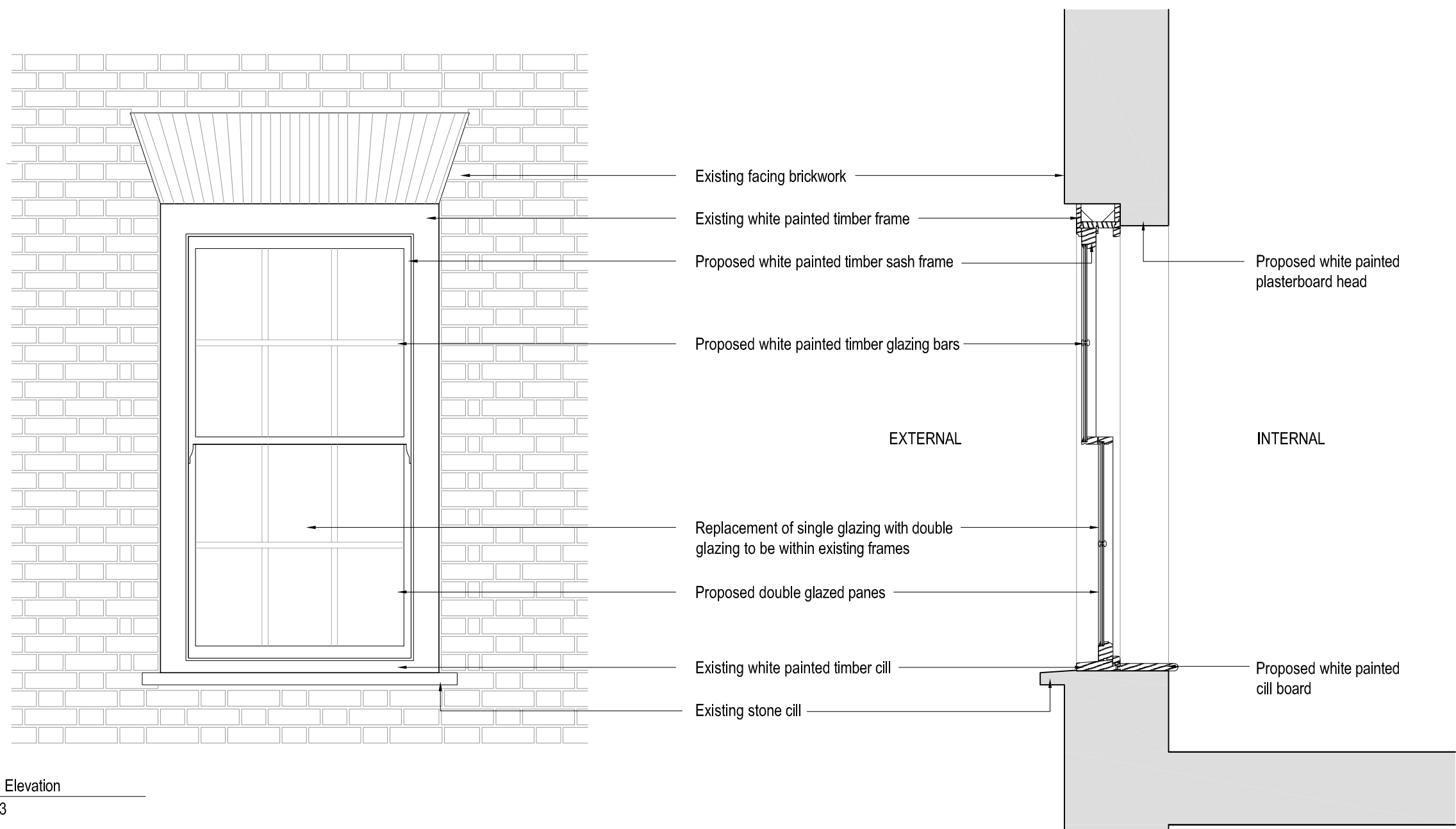
3100 Plan detail
 02 1:20@A3

3100 Section detail
 03 1:20@A3

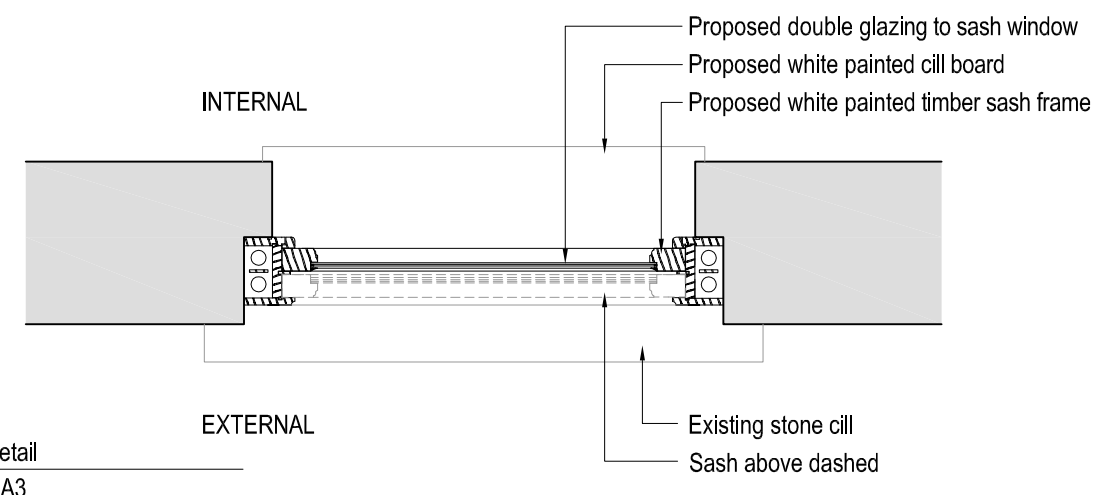
status			FOR PLANNING
BRIMELOW McSWEENEY ARCHITECTS			
28 Great Queen Street, Covent Garden, London WC2B 5SL tel: 020 7831 7835 - fax: 020 7831 7839 - email: admin@brim-architects.co.uk			
project			19-21 Monmouth Street WC2H 9DD
title			Typical Timber Sash Window As Existing
scale	date	drawn	
1:20@A3	20-12-13	DPF	
drawing no.	revision		
1341-3100			/

Do not scale from this drawing, except for town planning purposes.
 Work to figured dimensions only.
 This drawing is the property of Brimelow McSweeney Architects and copyright is reserved by them.
 This drawing is issued on condition that it is not copied, used or disclosed by or to any unauthorised person without the prior written consent of Brimelow McSweeney Architects.
 The areas on the drawing have been measured directly from a CAD drawing and have no tolerances added or subtracted.
 The areas have been calculated in accordance with the Code of Measuring Practice, 6th Edition (2007) using the stated options NIA, GIA, GEA. They are approximate and relate to the likely areas of the building at the current state of the design. Any decisions to be made on the basis of these predictions, whether as to project viability, pre-letting, lease agreements and the like, should make allowance for the following:
 - Design development
 - Accurate site survey, site levels and dimensions need to be fully evaluated
 - Allowance for construction methods and building tolerances.
 - Local authority consents

rev	date	drawn by	chkd	description
/	20.12.13	DPF	SE	PLANNING ISSUE



3101 External Elevation
 01 1:20@A3

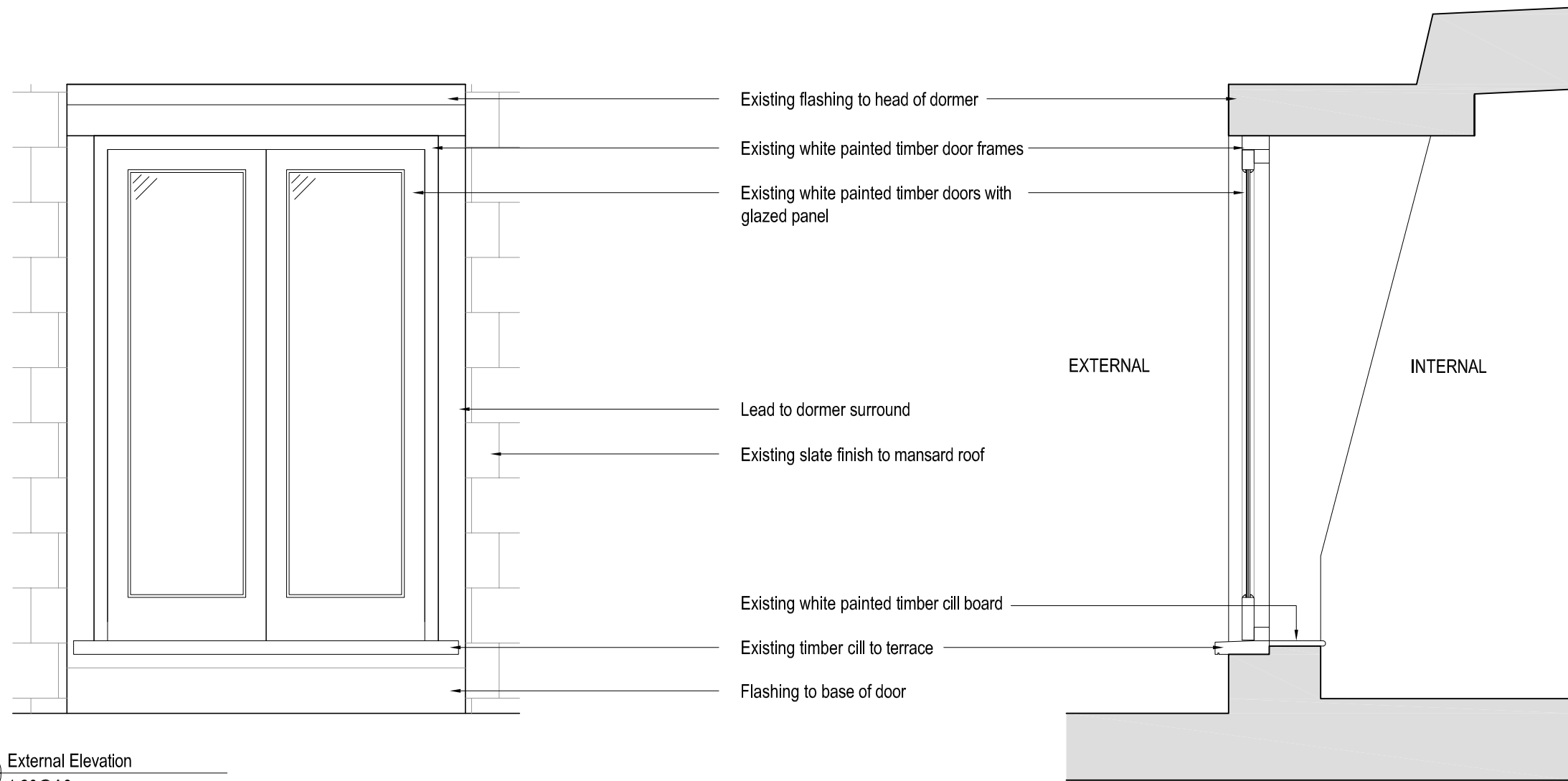


3101 Plan detail
 02 1:20@A3

3101 Section detail
 03 1:20@A3

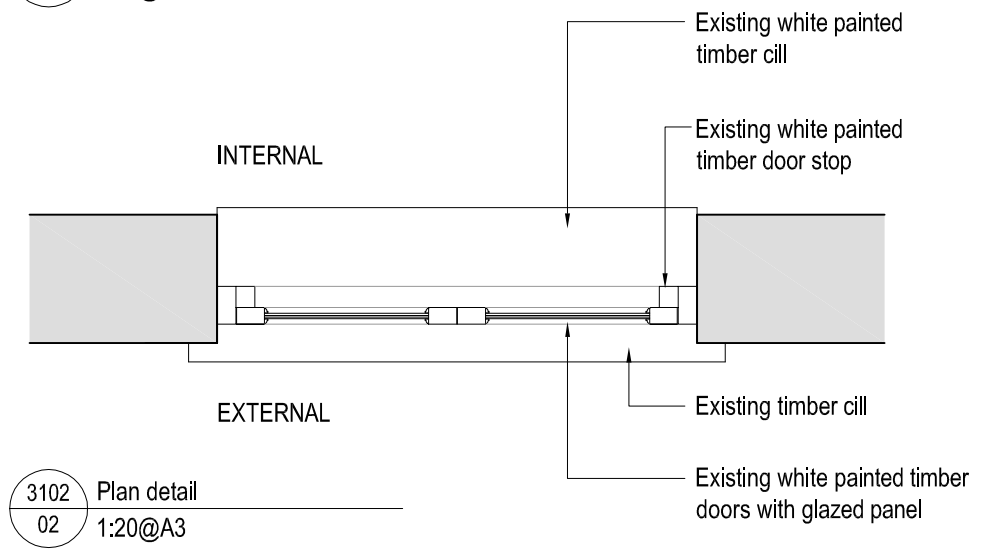
status			FOR PLANNING
BRIMELOW McSWEENEY ARCHITECTS			
28 Great Queen Street, Covent Garden, London WC2B 5SL tel: 020 7831 7835 - fax: 020 7831 7839 - email: admin@brim-architects.co.uk			
project			19-21 Monmouth Street WC2H 9DD
title			Typical Timber Sash Window As Proposed
scale	date	drawn	
1:20@A3	20-12-13	DPF	
drawing no.	revision		
1341-3101			/

Do not scale from this drawing, except for town planning purposes.
 Work to figured dimensions only.
 This drawing is the property of Brimelow McSweeney Architects and copyright is reserved by them.
 This drawing is issued on condition that it is not copied, used or disclosed by or to any unauthorised person without the prior written consent of Brimelow McSweeney Architects.
 The areas on the drawing have been measured directly from a CAD drawing and have no tolerances added or subtracted.
 The areas have been calculated in accordance with the Code of Measuring Practice, 6th Edition (2007) using the stated options NIA, GIA, GEA. They are approximate and relate to the likely areas of the building at the current state of the design. Any decisions to be made on the basis of these predictions, whether as to project viability, pre-letting, lease agreements and the like, should make allowance for the following:
 - Design development
 - Accurate site survey, site levels and dimensions need to be fully evaluated
 - Allowance for construction methods and building tolerances.
 - Local authority consents
 rev date dwn by chkd description
 / 20.12.13 DPF SE PLANNING ISSUE



3102 External Elevation
 01 1:20@A3

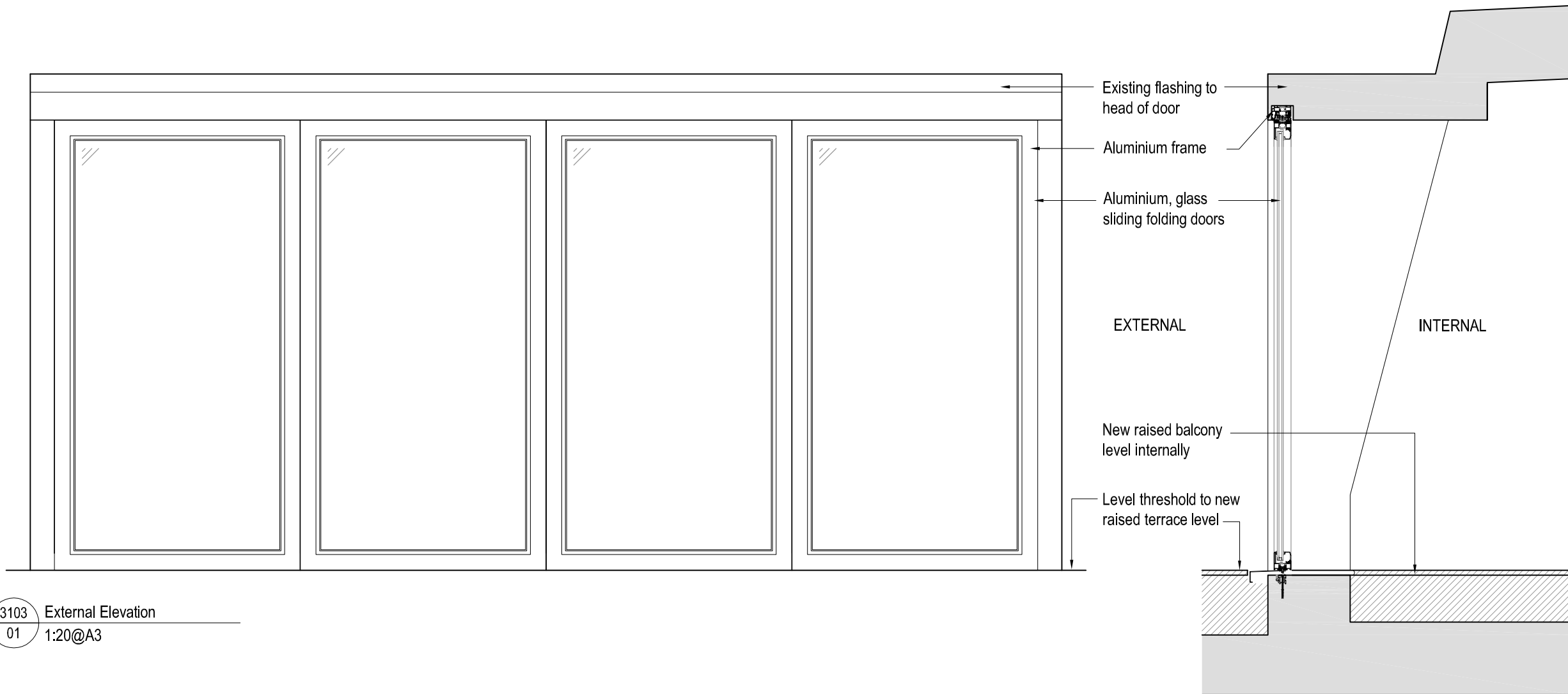
3102 Section detail
 03 1:20@A3



3102 Plan detail
 02 1:20@A3

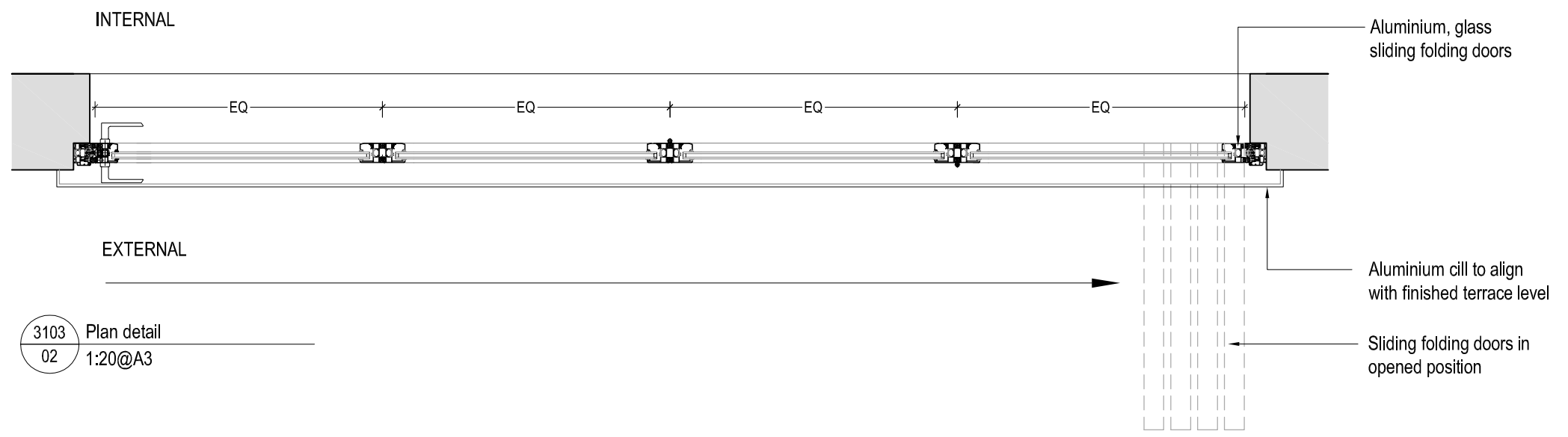
status		
FOR PLANNING		
BRIMELOW McSWEENEY ARCHITECTS <small>28 Great Queen Street, Covent Garden, London WC2B 5SL tel: 020 7831 7835 - fax: 020 7831 7839 - email: admin@brm-architects.co.uk</small>		
<small>project</small> 19-21 Monmouth Street WC2H 9DD		
<small>title</small> Terrace doors As Existing		
<small>scale</small>	<small>date</small>	<small>drawn</small>
1:20@A3	20-12-13	DPF
<small>drawing no.</small>	<small>revision</small>	
1341-3102	/	

Do not scale from this drawing, except for town planning purposes.
 Work to figured dimensions only.
 This drawing is the property of Brimelow McSweeney Architects and copyright is reserved by them.
 This drawing is issued on condition that it is not copied, used or disclosed by or to any unauthorised person without the prior written consent of Brimelow McSweeney Architects.
 The areas on the drawing have been measured directly from a CAD drawing and have no tolerances added or subtracted.
 The areas have been calculated in accordance with the Code of Measuring Practice, 6th Edition (2007) using the stated options NIA, GIA, GEA. They are approximate and relate to the likely areas of the building at the current state of the design. Any decisions to be made on the basis of these predictions, whether as to project viability, pre-letting, lease agreements and the like, should make allowance for the following:
 - Design development
 - Accurate site survey, site levels and dimensions need to be fully evaluated
 - Allowance for construction methods and building tolerances.
 - Local authority consents
 rev date drawn by chkd description
 / 20.12.13 DPF SE PLANNING ISSUE



3103 External Elevation
 01 1:20@A3

3103 Section detail
 03 1:20@A3



3103 Plan detail
 02 1:20@A3

status			FOR PLANNING		
BRIMELOW McSWEENEY ARCHITECTS					
28 Great Queen Street, Covent Garden, London WC2B 5SL tel: 020 7831 7835 - fax: 020 7831 7839 - email: admin@brm-architects.co.uk					
project			19-21 Monmouth Street WC2H 9DD		
title			Terrace doors As Proposed		
scale	date	drawn			
1:20@A3	20-12-13	DPF			
drawing no.	revision				
1341-3103	/				