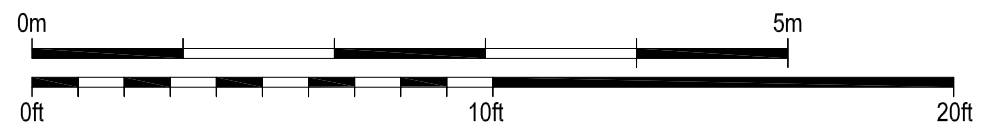
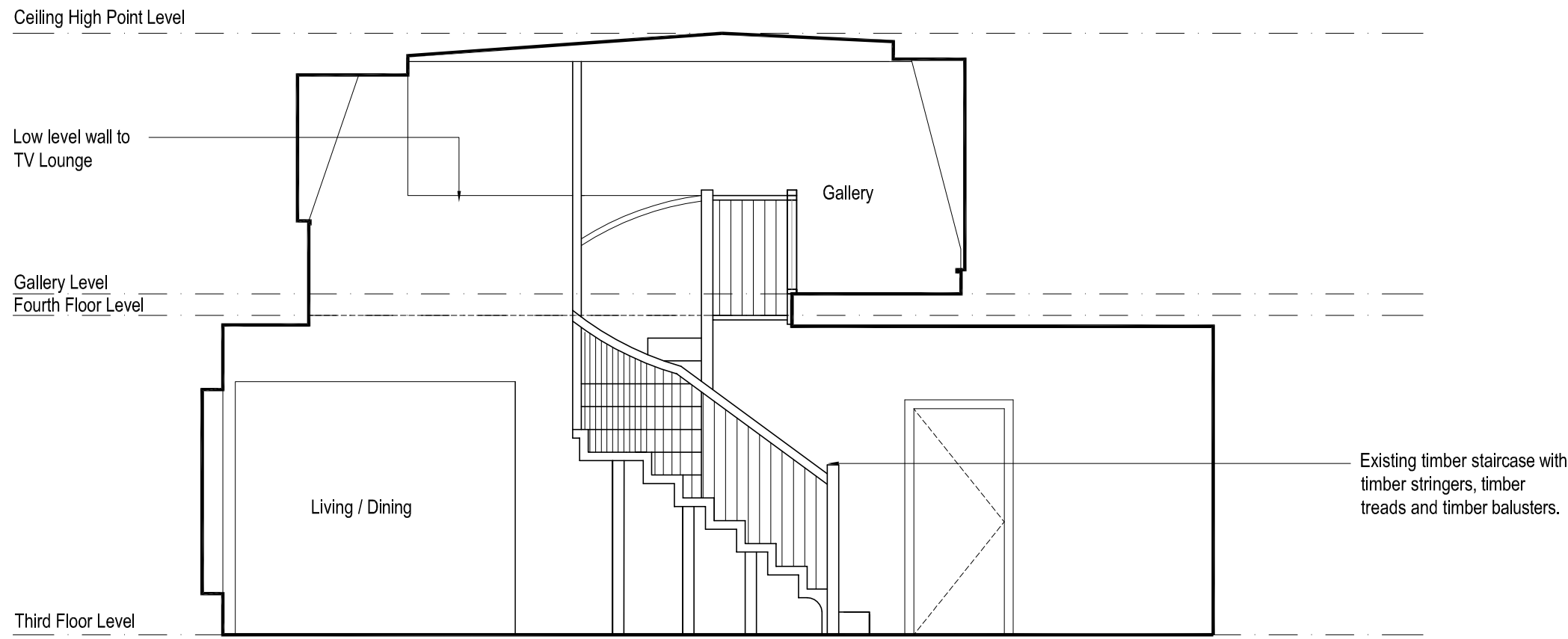
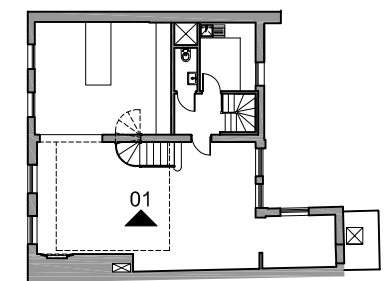


Do not scale from this drawing, except for town planning purposes.  
 Work to figured dimensions only.  
 This drawing is the property of Brimelow McSweeney Architects and copyright is reserved by them.  
 This drawing is issued on condition that it is not copied, used or disclosed by or to any unauthorised person without the prior written consent of Brimelow McSweeney Architects.  
 The areas on the drawing have been measured directly from a CAD drawing and have no tolerances added or subtracted.  
 The areas have been calculated in accordance with the Code of Measuring Practice, 6th Edition (2007) using the stated options NIA, GIA, GEA. They are approximate and relate to the likely areas of the building at the current state of the design. Any decisions to be made on the basis of these predictions, whether as to project viability, pre-letting, lease agreements and the like, should make allowance for the following:  
 - Design development  
 - Accurate site survey, site levels and dimensions need to be fully evaluated  
 - Allowance for construction methods and building tolerances.  
 - Local authority consents

rev date drawn by chkd description  
 / 20.12.13 DPF SE PLANNING ISSUE



KEY PLAN



status **FOR PLANNING**

**BRIMELOW McSWEENEY ARCHITECTS**

28 Great Queen Street, Covent Garden, London WC2B 5SL  
 tel: 020 7631 7835 - fax: 020 7631 7839 - email: admin@brimelow-mcsweeney.com

project  
 19-21 Monmouth Street  
 WC2H 9DD

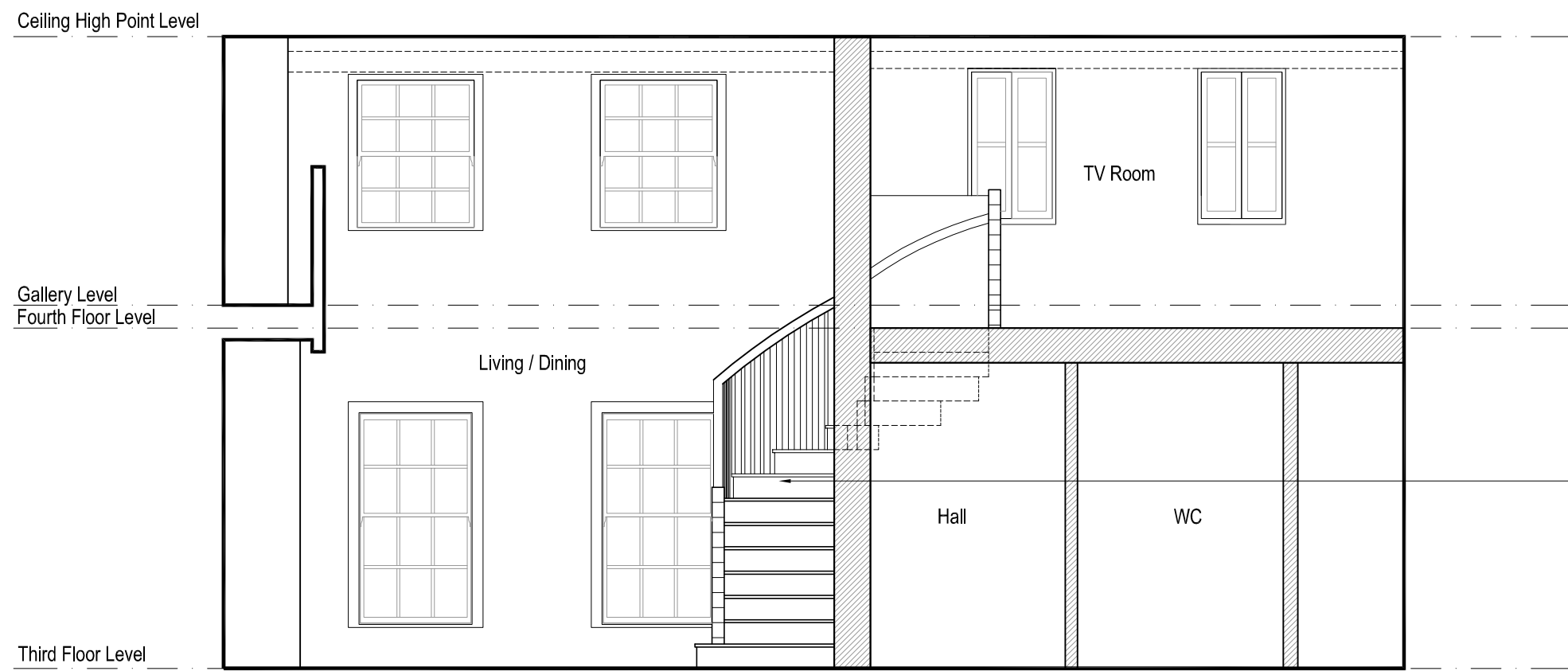
title  
**Internal Elevation 01**  
 As Existing

scale 1:50@A3 date 20-12-13 drawn DPF

drawing no. 1341-0302 revision /

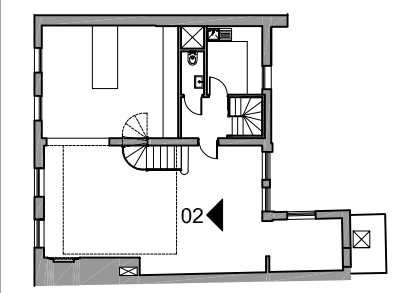
Do not scale from this drawing, except for town planning purposes.  
 Work to figured dimensions only.  
 This drawing is the property of Brimelow McSweeney Architects and copyright is reserved by them.  
 This drawing is issued on condition that it is not copied, used or disclosed by or to any unauthorised person without the prior written consent of Brimelow McSweeney Architects.  
 The areas on the drawing have been measured directly from a CAD drawing and have no tolerances added or subtracted.  
 The areas have been calculated in accordance with the Code of Measuring Practice, 6th Edition (2007) using the stated options NIA, GIA, GEA. They are approximate and relate to the likely areas of the building at the current state of the design. Any decisions to be made on the basis of these predictions, whether as to project viability, pre-letting, lease agreements and the like, should make allowance for the following:  
 - Design development  
 - Accurate site survey, site levels and dimensions need to be fully evaluated  
 - Allowance for construction methods and building tolerances.  
 - Local authority consents

rev	date	drawn by	chkd	description
/	20.12.13	DPF	SE	PLANNING ISSUE

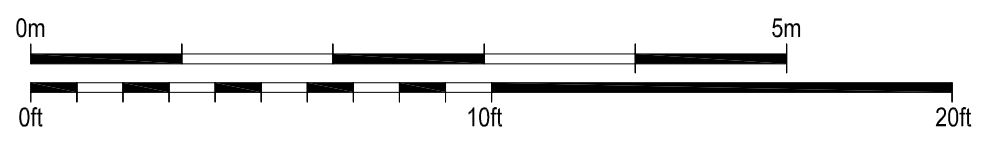


Existing timber staircase with timber stringers, timber treads and timber balusters.

KEY PLAN

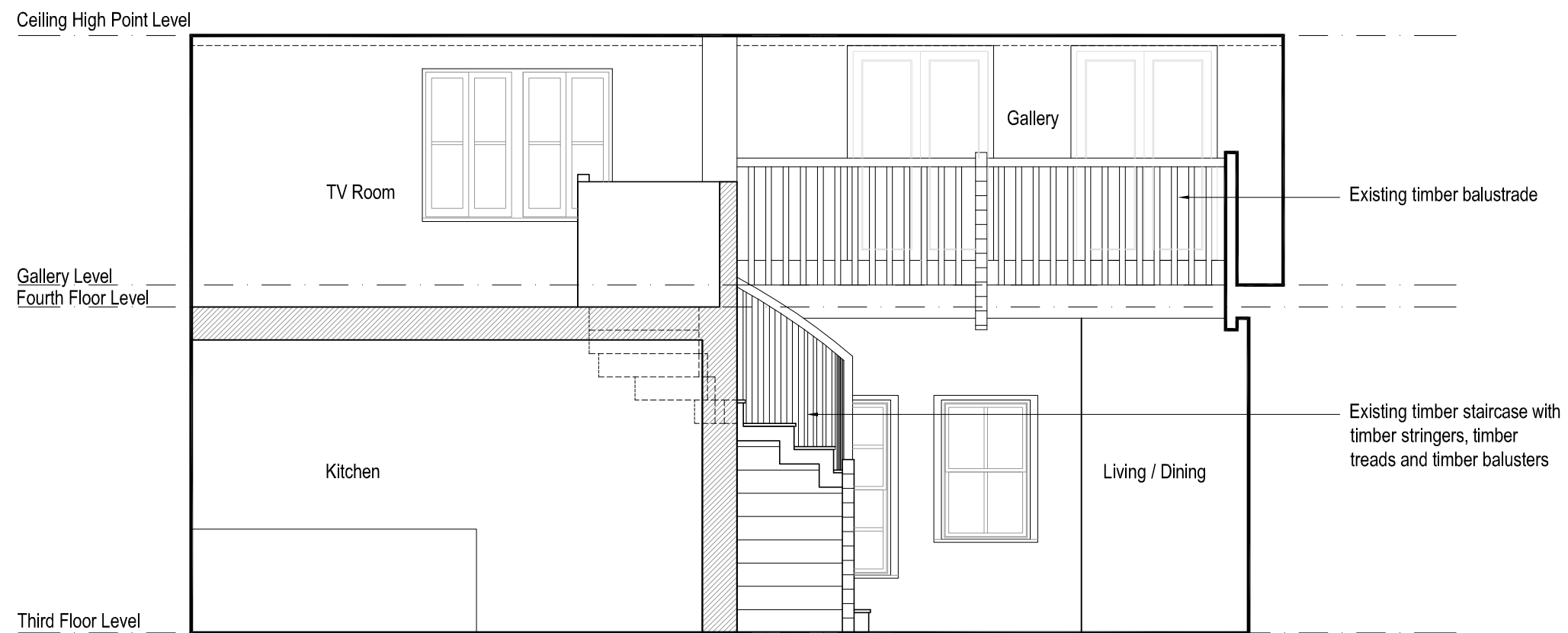


status		
FOR PLANNING		
<b>BRIMELOW McSWEENEY ARCHITECTS</b> <small>26 Great Queen Street, Covent Garden, London WC2B 5BL          tel: 020 7631 7835 - fax: 020 7631 7839 - email: admin@brim-architects.co.uk</small>		
project		
19-21 Monmouth Street WC2H 9DD		
title		
Internal Elevation 02 As Existing		
scale	date	drawn
1:50@A3	20-12-13	DPF
drawing no.	revision	
1341-0303	/	

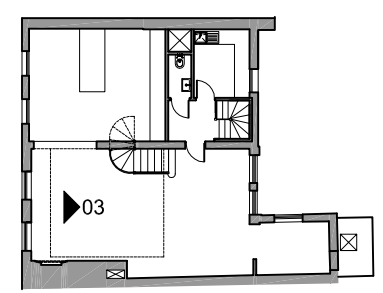


Do not scale from this drawing, except for town planning purposes.  
 Work to figured dimensions only.  
 This drawing is the property of Brimelow McSweeney Architects and copyright is reserved by them.  
 This drawing is issued on condition that it is not copied, used or disclosed by or to any unauthorised person without the prior written consent of Brimelow McSweeney Architects.  
 The areas on the drawing have been measured directly from a CAD drawing and have no tolerances added or subtracted.  
 The areas have been calculated in accordance with the Code of Measuring Practice, 6th Edition (2007) using the stated options NIA, GIA, GEA. They are approximate and relate to the likely areas of the building at the current state of the design. Any decisions to be made on the basis of these predictions, whether as to project viability, pre-letting, lease agreements and the like, should make allowance for the following:  
 - Design development  
 - Accurate site survey, site levels and dimensions need to be fully evaluated  
 - Allowance for construction methods and building tolerances.  
 - Local authority consents

rev date drawn by chkd description  
 / 20.12.13 DPF SE PLANNING ISSUE



KEY PLAN



status FOR PLANNING

**BRIMELOW McSWEENEY ARCHITECTS**

28 Great Queen Street, Covent Garden, London WC2B 5SL  
 tel: 020 7631 7835 - fax: 020 7631 7839 - email: admin@brim-architects.co.uk

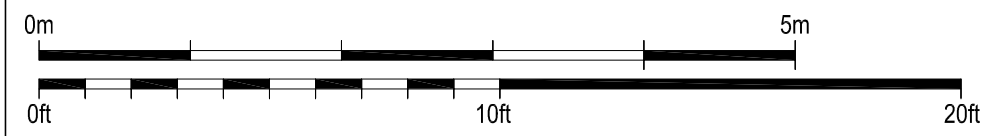


project  
 19-21 Monmouth Street  
 WC2H 9DD

title  
 Internal Elevation 03  
 As Existing

scale	date	drawn
1:50@A3	20-12-13	DPF

drawing no.	revision
1341-0304	/



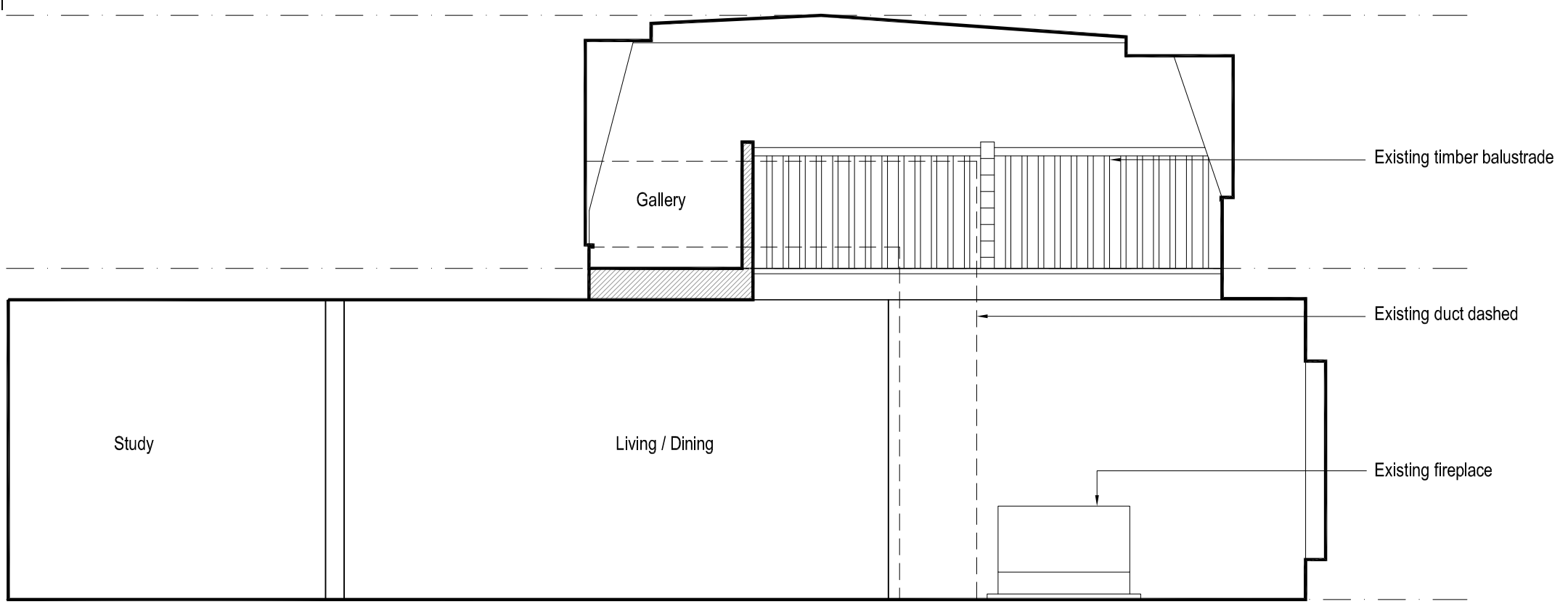
Do not scale from this drawing, except for town planning purposes.  
 Work to figured dimensions only.  
 This drawing is the property of Brimelow McSweeney Architects and copyright is reserved by them.  
 This drawing is issued on condition that it is not copied, used or disclosed by or to any unauthorised person without the prior written consent of Brimelow McSweeney Architects.  
 The areas on the drawing have been measured directly from a CAD drawing and have no tolerances added or subtracted.  
 The areas have been calculated in accordance with the Code of Measuring Practice, 6th Edition (2007) using the stated options NIA, GIA, GEA. They are approximate and relate to the likely areas of the building at the current state of the design. Any decisions to be made on the basis of these predictions, whether as to project viability, pre-letting, lease agreements and the like, should make allowance for the following:  
 - Design development  
 - Accurate site survey, site levels and dimensions need to be fully evaluated  
 - Allowance for construction methods and building tolerances.  
 - Local authority consents

rev date drawn by chkd description  
 / 20.12.13 DPF SE PLANNING ISSUE

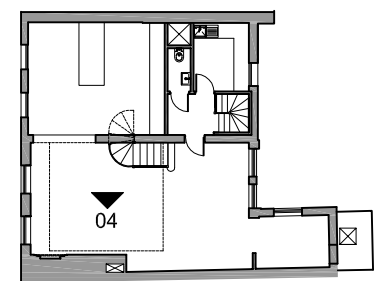
Ceiling High Point Level

Gallery Level

Third Floor Level



KEY PLAN



status FOR PLANNING

**BRIMELOW  
 McSWEENEY  
 ARCHITECTS**  
 26 Great Queen Street, Covent Garden, London WC2B 5BL  
 tel: 020 7631 7835 - fax: 020 7631 7839 - email: admin@brim-architects.co.uk

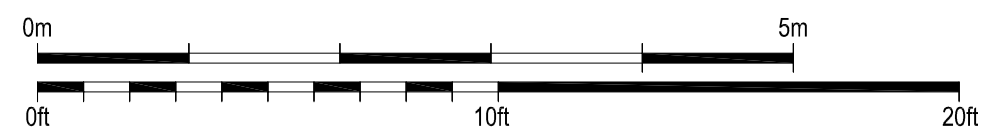


project  
 19-21 Monmouth Street  
 WC2H 9DD

title  
 Internal Elevation 04  
 As Existing

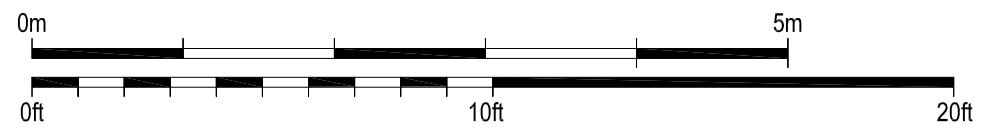
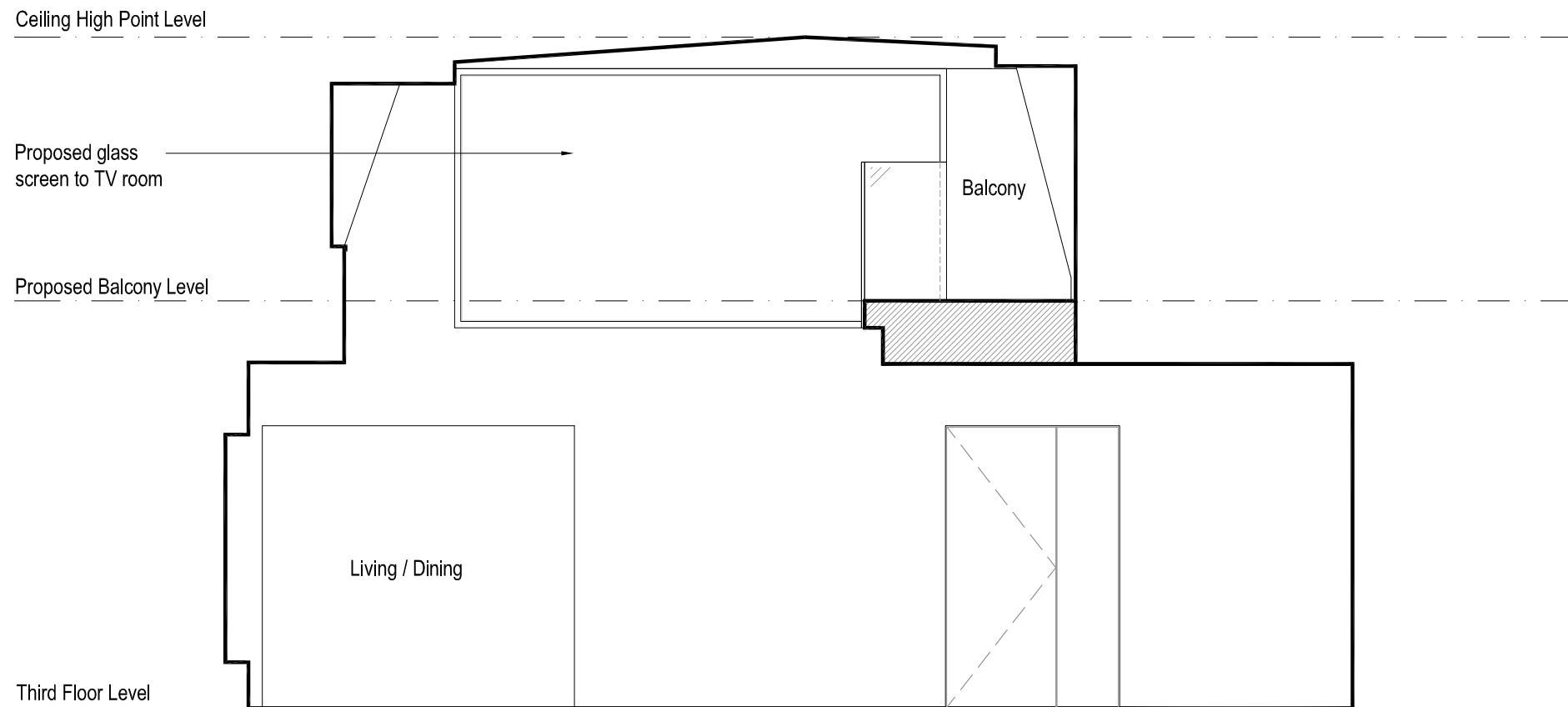
scale 1:50@A3 date 20-12-13 drawn DPF

drawing no. 1341-0305 revision /

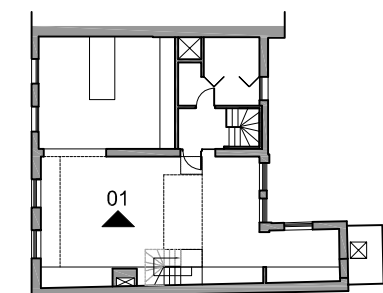


Do not scale from this drawing, except for town planning purposes.  
 Work to figured dimensions only.  
 This drawing is the property of Brimelow McSweeney Architects and copyright is reserved by them.  
 This drawing is issued on condition that it is not copied, used or disclosed by or to any unauthorised person without the prior written consent of Brimelow McSweeney Architects.  
 The areas on the drawing have been measured directly from a CAD drawing and have no tolerances added or subtracted.  
 The areas have been calculated in accordance with the Code of Measuring Practice, 6th Edition (2007) using the stated options NIA, GIA, GEA. They are approximate and relate to the likely areas of the building at the current state of the design. Any decisions to be made on the basis of these predictions, whether as to project viability, pre-letting, lease agreements and the like, should make allowance for the following:  
 - Design development  
 - Accurate site survey, site levels and dimensions need to be fully evaluated  
 - Allowance for construction methods and building tolerances.  
 - Local authority consents

rev	date	drawn by	chkd	description
/	20.12.13	DPF	SE	PLANNING ISSUE



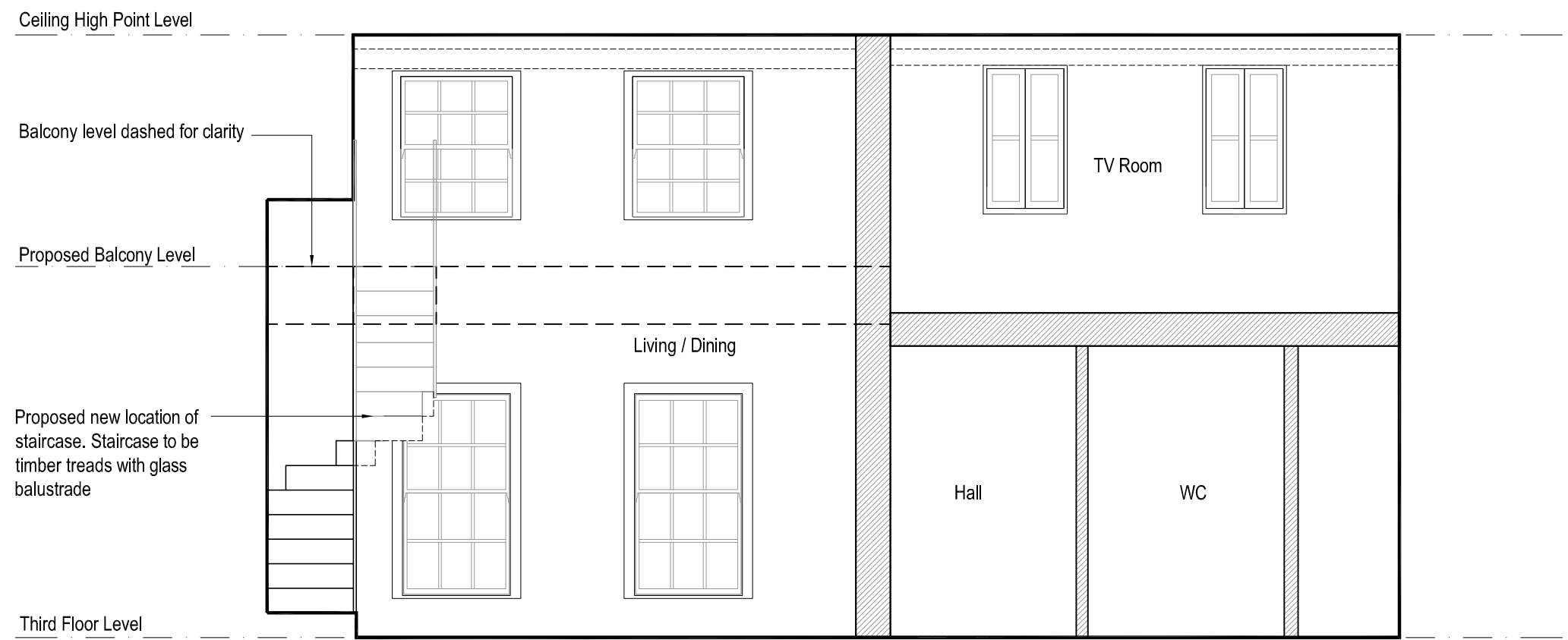
KEY PLAN



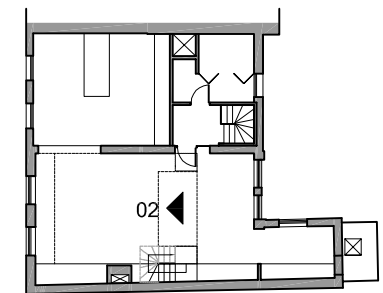
status		
FOR PLANNING		
<b>BRIMELOW McSWEENEY ARCHITECTS</b> <small>28 Great Queen Street, Covent Garden, London WC2B 5SL          tel: 020 7831 7835 - fax: 020 7831 7839 - email: admin@brim-architects.co.uk</small>		
<small>project</small> 19-21 Monmouth Street WC2H 9DD		
<small>title</small> Internal Elevation 01 As Proposed		
<small>scale</small> 1:50@A3	<small>date</small> 20-12-13	<small>drawn</small> DPF
<small>drawing no.</small> 1341-1302	<small>revision</small> /	


Do not scale from this drawing, except for town planning purposes.  
 Work to figured dimensions only.  
 This drawing is the property of Brimelow McSweeney Architects and copyright is reserved by them.  
 This drawing is issued on condition that it is not copied, used or disclosed by or to any unauthorised person without the prior written consent of Brimelow McSweeney Architects.  
 The areas on the drawing have been measured directly from a CAD drawing and have no tolerances added or subtracted.  
 The areas have been calculated in accordance with the Code of Measuring Practice, 6th Edition (2007) using the stated options NIA, GIA, GEA. They are approximate and relate to the likely areas of the building at the current state of the design. Any decisions to be made on the basis of these predictions, whether as to project viability, pre-letting, lease agreements and the like, should make allowance for the following:  
 - Design development  
 - Accurate site survey, site levels and dimensions need to be fully evaluated  
 - Allowance for construction methods and building tolerances.  
 - Local authority consents

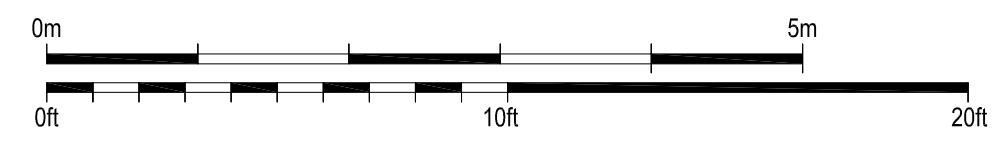
rev	date	drawn by	chkd	description
/	20.12.13	DPF	SE	PLANNING ISSUE



KEY PLAN



status		
<b>FOR PLANNING</b>		
<b>BRIMELOW McSWEENEY ARCHITECTS</b> <small>28 Great Queen Street, Covent Garden, London WC2B 5SL          tel: 020 7631 7835 - fax: 020 7631 7839 - email: admin@brim-architects.co.uk</small>		
		
project		
19-21 Monmouth Street WC2H 9DD		
title		
Internal Elevation 02 As Proposed		
scale	date	drawn
1:50@A3	20-12-13	DPF
drawing no.	revision	
1341-1303	/	

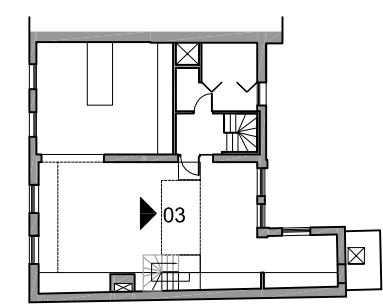


Do not scale from this drawing, except for town planning purposes.  
 Work to figured dimensions only.  
 This drawing is the property of Brimelow McSweeney Architects and copyright is reserved by them.  
 This drawing is issued on condition that it is not copied, used or disclosed by or to any unauthorised person without the prior written consent of Brimelow McSweeney Architects.  
 The areas on the drawing have been measured directly from a CAD drawing and have no tolerances added or subtracted.  
 The areas have been calculated in accordance with the Code of Measuring Practice, 6th Edition (2007) using the stated options NIA, GIA, GEA. They are approximate and relate to the likely areas of the building at the current state of the design. Any decisions to be made on the basis of these predictions, whether as to project viability, pre-letting, lease agreements and the like, should make allowance for the following:  
 - Design development  
 - Accurate site survey, site levels and dimensions need to be fully evaluated  
 - Allowance for construction methods and building tolerances.  
 - Local authority consents

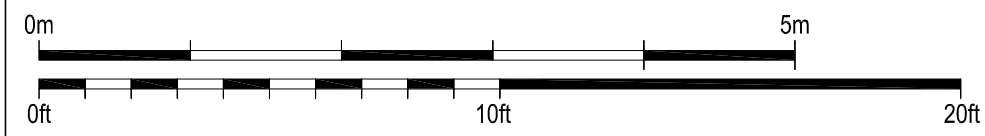
rev	date	drawn by	chkd	description
/	20.12.13	DPF	SE	PLANNING ISSUE



KEY PLAN



status		
FOR PLANNING		
<b>BRIMELOW McSWEENEY ARCHITECTS</b> <small>26 Great Queen Street, Covent Garden, London WC2B 5BL        tel: 020 7831 7835 - fax: 020 7831 7839 - email: admin@brim-architects.co.uk</small>		
project		
19-21 Monmouth Street WC2H 9DD		
title		
Internal Elevation 03 As Proposed		
scale	date	drawn
1:50@A3	20-12-13	DPF
drawing no.	revision	
1341-1304	/	



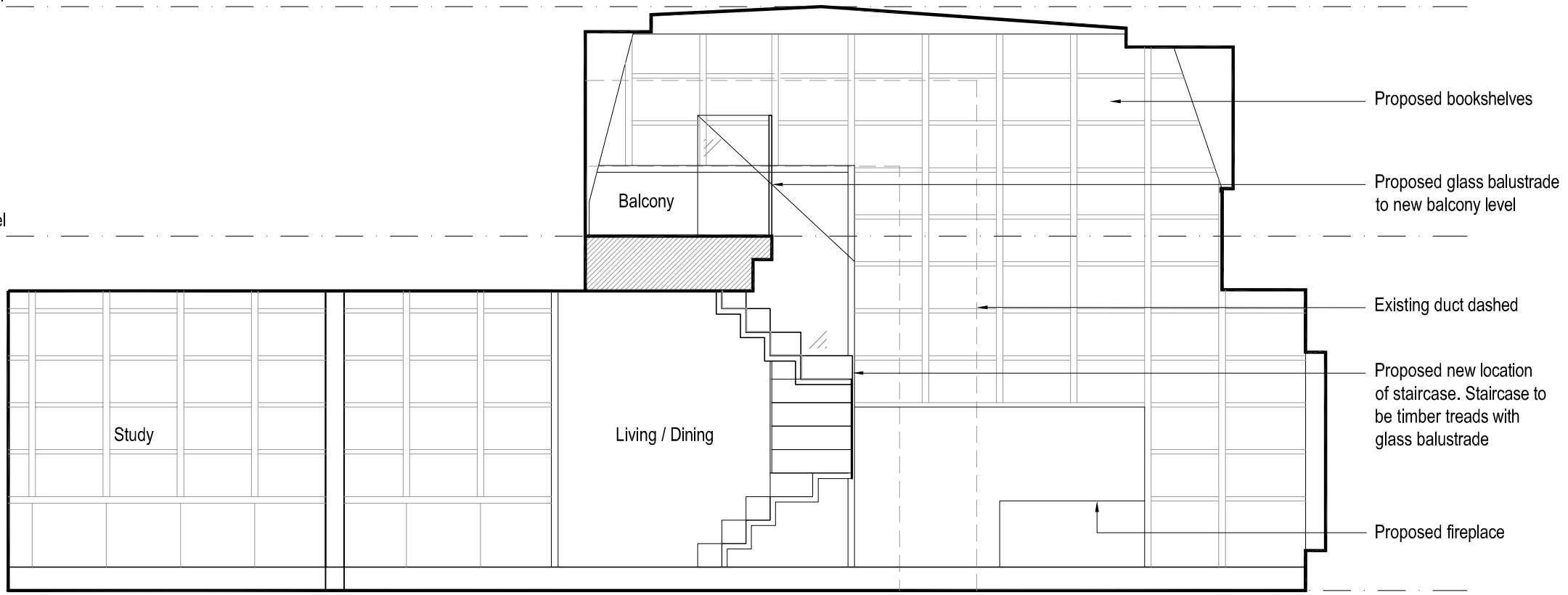
Do not scale from this drawing, except for town planning purposes.  
 Work to figured dimensions only.  
 This drawing is the property of Brimelow McSweeney Architects and copyright is reserved by them.  
 This drawing is issued on condition that it is not copied, used or disclosed by or to any unauthorised person without the prior written consent of Brimelow McSweeney Architects.  
 The areas on the drawing have been measured directly from a CAD drawing and have no tolerances added or subtracted.  
 The areas have been calculated in accordance with the Code of Measuring Practice, 6th Edition (2007) using the stated options NIA, GIA, GEA. They are approximate and relate to the likely areas of the building at the current state of the design. Any decisions to be made on the basis of these predictions, whether as to project viability, pre-letting, lease agreements and the like, should make allowance for the following:  
 - Design development  
 - Accurate site survey, site levels and dimensions need to be fully evaluated  
 - Allowance for construction methods and building tolerances.  
 - Local authority consents

rev	date	drawn by	chkd	description
/	20.12.13	DPF	SE	PLANNING ISSUE

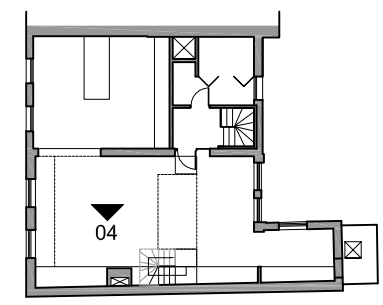
Ceiling High Point Level

Proposed Balcony Level

Third Floor Level



KEY PLAN



status		
FOR PLANNING		
<b>BRIMELOW McSWEENEY ARCHITECTS</b> <small>20 Great Queen Street, Covent Garden, London WC2B 5SL        tel: 020 7831 7835 - fax: 020 7831 7839 - email: admin@brim-architects.co.uk</small>		
project		
19-21 Monmouth Street WC2H 9DD		
title		
Internal Elevation 04 As Proposed		
scale	date	drawn
1:50@A3	20-12-13	DPF
drawing no.	revision	
1341-1305	/	

