



01 West Elevation
Scale 1:100 @ A0



02 South Elevation
Scale 1:100 @ A0

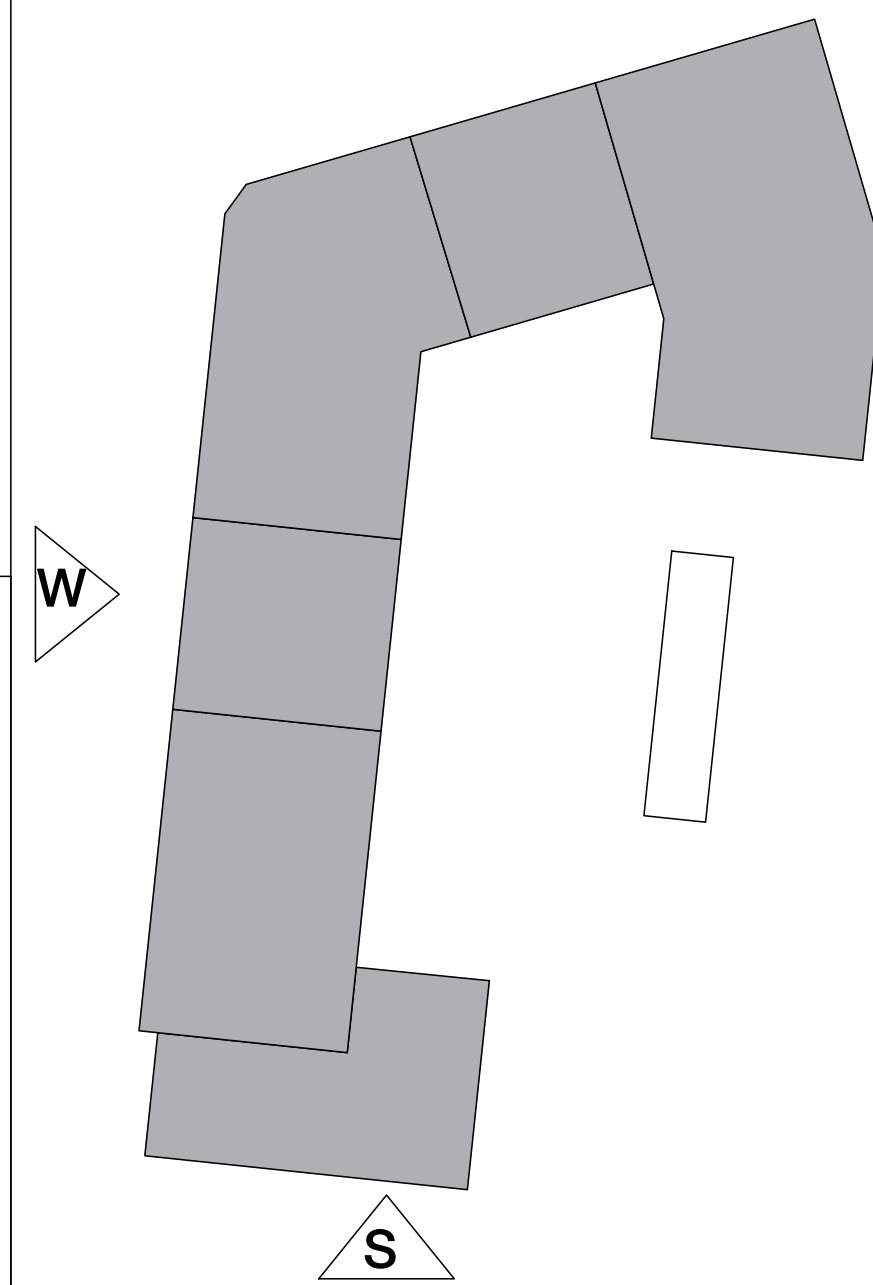
Plot JKL Material Specification

- Predominant brick used from ground to fifth floor of building - textured clinker brick, engobe/coal fired. Bond - random. Colour - brown/purple variegated brick with a degree of patterning within each brick. Mortar - flush pointed, colour to be determined after review of sample boards
- Communal entrances expressed with a sawtooth bond
- Maisonette entrances expressed with a sawtooth bond
- Shop corner expressed with sawtooth bond
- Vertical stretcher bond band
- Brick finish to underside of soffits
- Top floor brick - waterstruck, double fired. Bond - random. Colour - silver variegated brick, with a degree of patterning within each brick. Mortar - flush pointed, colour white
- Balconies at top floor expressed with a sawtooth bond
- Glazed brick band to base of building. Bond - random. Colour - dark green
- Reconstituted stone banding, polished finish. Colour - light grey
- Reconstituted stone balcony and window surround forming polished finish. Colour - light grey
- Reconstituted stone recessed seat, polished finish. Colour - light grey
- Clear glazed communal entrance door to front and rear of building, with full height glazed window above. Door set to be PAS 24 Approved. Colour - light bronze/gold

- Solid core private entrance door. Door set to be PAS 24 Approved. Colour - TBC
- Refuse door - perforated anodised aluminium. Colour - light bronze/gold
- Slip resistant decorative tile, pattern A to communal entrance floor and walls. Tile pattern extends to extent of entrance recess externally
- Suspended stainless steel soffit with mirrored finish to communal entrance lobby ceiling
- High quality lighting to communal entrance areas
- Slip resistant decorative tile, pattern B to maisonette entrance threshold. Tile pattern extends to extent of entrance recess externally
- Clear glazed window. Frame anodised aluminium. Colour - light bronze/gold
- Clear glazed balcony door. Frame anodised aluminium. Colour - light bronze/gold

- Polyester powder coated steel angled decorative ballustrade. Colour - light bronze/gold to match window frames
- Shop front. Clear glazed windows. Window frames, stallriser and fascia anodised aluminium. Colour - light bronze/gold

Plot JKL - Key Plan 1:500 @ A0



Copyright Hawkins Brown Architects LLP
No implied license exists. This drawing should not be used to calculate areas for the purposes of valuation. Do not scale this drawing. All dimensions to be checked on site by the contractor and such dimensions to be their responsibility. All work must comply with relevant British Standards and Building Regulations requirements. Drawing errors and omissions to be reported to the architect.

Revisions
A 8/1/14 Boundary condition to L&Q on South elevation added.

Hawkins\Brown
159 St John Street
London
EC1V 4QJ
020 7336 8030t
mail@hawkinsbrown.com
www.hawkinsbrown.com

Project
Agar Grove
Estate Regeneration

Drawing
Plot JKL
West & South Elevations

Scale @ A0 (@ A3)
1:100
Date
January 2014

Drawn by
EC/RP
Checked by
SR

Job Number
HB1423
Status
Planning

Drawing No. & Revision
1423_DWG_PlotJKL_00_251 A