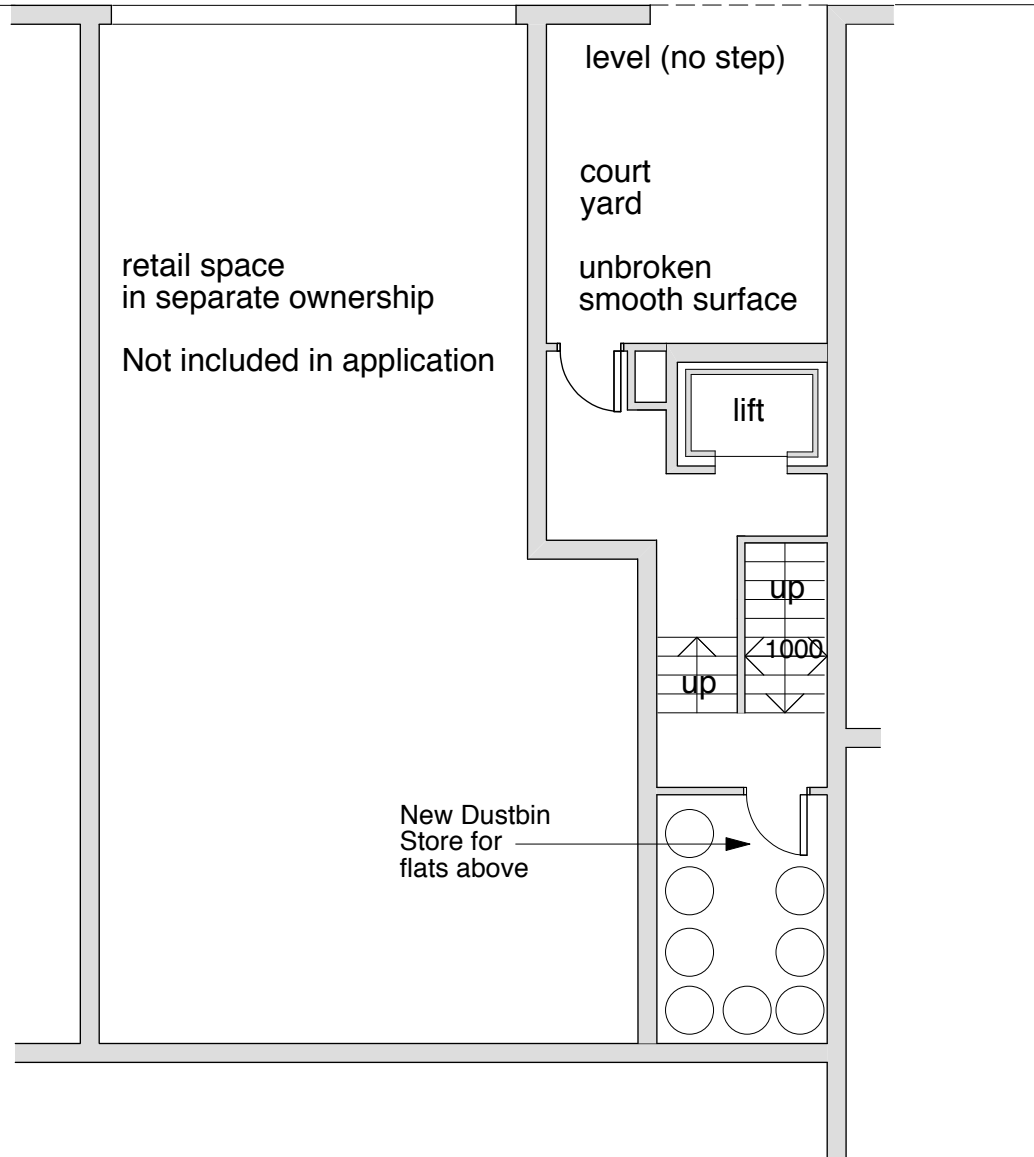
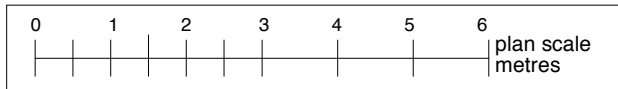


Gray's Inn Road

back edge of pavement



Print on A4 paper



Job 91 Gray's Inn Road, London WC1X 8TX
 Title Proposed Ground Floor Plan

Triplos Architects
 Corner House, High Street, Wrotham, Kent TN15 7AD
 tel: 01732 789667 e-mail: info@triplosarchitects.co.uk

Scale 1:100
 Date October 2013
 Drawing No. 8390.13