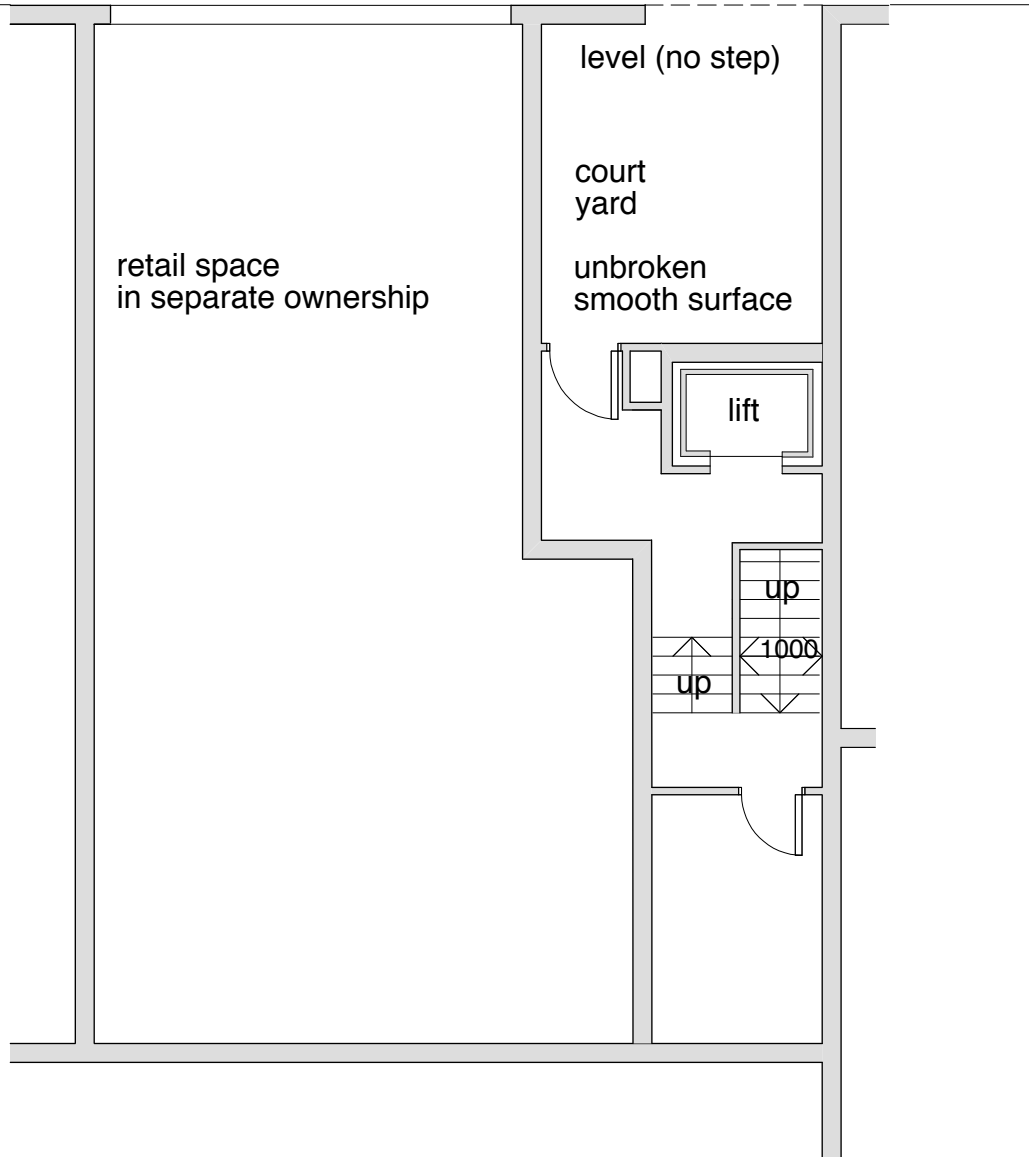
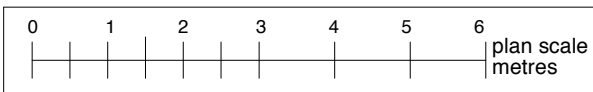


Gray's Inn Road

back edge of pavement



Print on
A4 paper



Job 91 Gray's Inn Road, London WC1X 8TX
 Title Existing Ground Floor Plan

Tripes Architects
 Corner House, High Street, Wrotham, Kent TN15 7AD
 tel: 01732 789667 e-mail: info@triposarchitects.co.uk

Scale 1:100
 Date October 2013
 Drawing No. 8390.8