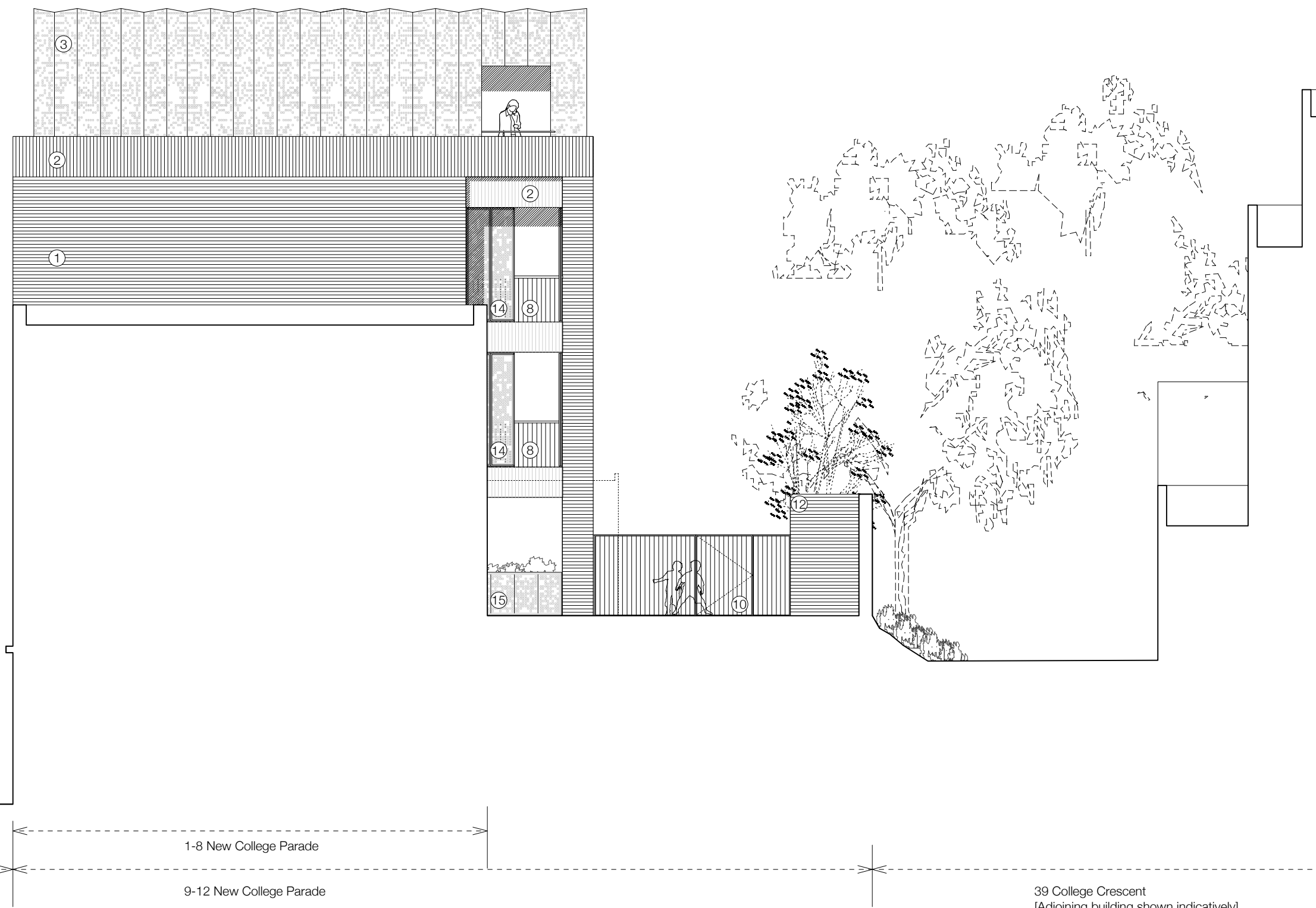
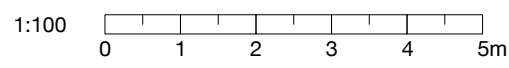


16 Cast stone surrounds (Light grey portland stone finish) to commercial units, with bespoke uniform signage.



- 01 **Walls** - Egernsund Tegl facing brick: Custom mix 60% Red Coal (2.2.60); 40% Persa (2.4.45)
- 02 **Walls** - Egernsund Tegl facing brick: Custom mix 60% Red Coal (2.2.60); 40%Persa(2.4.45). Laid in Soldier course bond.
- 03 **Walls** - TECU Gold (copper / aluminium alloy), perforated rainscreen cladding panel. 'Punched' perforations in custom pattern.
- 04 **Windows** - PPC Aluminium/Timber frame composite, such as Velfac 200 series or equal approved. Side Hung Projection lights (Outward opening, cleanable from inside). Grey finish, (RAL 7011) to brickwork. Perbeige (RAL1035) to metal cladding. Additional secondary glazing to meet acoustic requirements.
- 05 **Entrance Doors** - PPC Aluminium / Timber frame composite with Glazed side & toplight. Secure by Design approved (PAS24). Grey finish - (RAL 1035).
- 06 **Cills** - Cast stone cills. Light gray Portland stone finish.
- 07 **Copings** - Brick on end copings to parapets to match wall finish.
- 08 **Balustrade**. Galvanised & painted balustrade, MS flatbar uprights. MS flat bar handrail. (RAL 7011)
- 09 **Rainwater Goods** - Aluminium, square profile, dark grey (RAL 7011) finish to match window frames.
- 10 **Gate** - Galvanised & painted MS gate - Finish (RAL 7011) to match Balustrade & railings.
- 11 **Commercial Glazing** - low profile curtain walling to shopfronts with flush jointing.
- 12 **Boundary wall** - Brick Boundary wall with integrated brick planters and hardwood timber seating. Egursland Tegl Persa brick (2.4.45)
- 13 **Rooflights** - Low level brick wall with integrated brick planters with inset rooflights to illuminate Ground floor areas below. Egursland Tegl Persa brick (2.4.45)
- 14 **Privacy Shutters** - TECU Gold (copper / aluminium alloy) perforated folding shutters. 'Punched' perforations in custom pattern.
- 15 **Planters** - Planters to First floor balcony areas clad in perforated TECU Gold (copper / aluminium alloy). 'Punched' perforations in custom pattern.

Side (East) Elevation 1:100



General Notes
 © Copyright Stephen Davy Peter Smith Architects 2013

These proposals are subject to the approval of all Statutory Building Control Requirements and the requirements of all Statutory Authorities and Service Providers.

The site boundaries and surroundings are based on a survey carried out by Maltby land surveys Ltd. The site boundaries are those described by the client.

These drawings are to be read in conjunction with all other relevant documentation produced by Stephen Davy Peter Smith Architects and other consultants employed by the client.

Do not scale the drawing.

Rev	Comment	By	Date
B	Title revised	LN	10.01.14
A	Notation added	CM	27.11.13
-	Preliminary Issue	CM	18.11.13

stephen davy architects
peter smith

Fanshaw House, Fanshaw Street, London N1 6HX
 Tel: 020 7739 2020 Fax: 020 7739 2021
 E-mail: sdpsa@davysmitharchitects.co.uk
 Website: www.davysmitharchitects.co.uk

Client
Brampton Investments Ltd.
 C/O Koopmans

Project
9-12 New College Parade
 Finchley Road
 London, NW3

Drawing Title Side Elevation (East)		
Job No. 1235	Drawn By CM	Scale 1:100 @ A3
Date Nov 2013	Checked By GD	
Drawing No. 1235(PL)212	Revision B	