

KEY

- Boundary of outline application
- Boundary of Detailed Application for Change of Use and Detailed Listed Building Consent
Please refer to drawings HR_N1853_001 to HR_N1853_018
- Extents of building envelope are illustrative only. For more information on maximum and minimum extents of building envelope please refer to drawing 12001_B_00_121_C
- Zone for disabled parking
- Pedestrian Access
- Vehicular/Service Access
- Service Entry Point

REV **DATE**

B	31/08/12	Issued for planning
A	18/06/12	Issued for information
-	27/07/12	Issued for information

NOTE

1. Do not scale from this drawing, other than for Planning purposes.
2. All dimensions to be checked on site by the contractor and such dimensions to be his responsibility.
3. Report all drawing errors, omissions and discrepancies to the architect.
4. This document may be issued in an uncontrolled CAD format to enable others to view it as background information to make alterations and/or additions. In that instance the file will be accompanied by a PDF version. It is for those making such alterations and additions to ensure that they make use of current background information. Allford Hall Monaghan Morris Ltd accepts no liability for any such alterations or additions to the background information or arising out of changes to background information which occur prior to alterations or additions being made.

LOCATION

ALLFORD HALL MONAGHAN MORRIS
ARCHITECTS Ltd
2ND FLOOR, BLOCK C, 5-23 OLD STREET LONDON EC1V 9HL
TEL 020 7251 5261 FAX 020 7251 5123 WEB WWW.AHMM.CO.UK

Job title
CAMDEN LOCK VILLAGE

Drawing title / location
VEHICULAR & PEDESTRIAN ACCESS
OUTLINE SCHOOL APPLICATION

drawn by	checked	scale	status		
GS	LS	1:200@A1; 1:400@A3	PLANNING		
project	zone	classification	drawing no.	revision	
12001	B	-	[00]	122	B



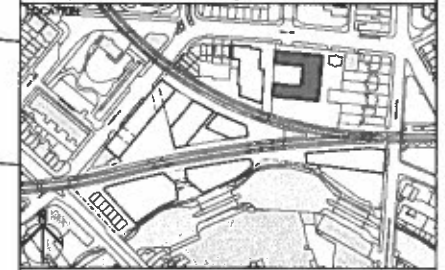
- KEY
- Boundary of outline application
 - Boundary of Detailed Application for Change of Use and Detailed Listed Building Consent Please refer to drawings HR_N1853_001 to HR_N1853_018
 - Maximum Extents of Building Envelope
 - Maximum Extents of Building Envelope at Third Floor
 - Minimum Extents of Building Envelope
 - Maximum extents of building projection for facade articulation. The total width of the projections will be no greater than 1/2 of the width of the north elevation.

C	31/08/12	Issued for planning
B	16/08/12	Issued for information
A	03/08/12	Issued for information
-	27/07/12	Issued for information

REV	DATE

NOTE

1. Do not scale from this drawing, other than for Planning purposes.
2. All dimensions to be checked on site by the contractor and such dimensions to be his responsibility.
3. Report all drawing errors, omissions and discrepancies to the architect.
4. This document may be issued in an uncontrolled CAD format to enable others to use it as background information to make alterations and/or additions. In that instance the file will be accompanied by a PDF version. It is for those making such alterations and additions to ensure that they make use of current background information. AHMM Ltd accepts no liability for any such alterations or additions to the background information or arising out of changes to background information which occur prior to alterations or additions being made.

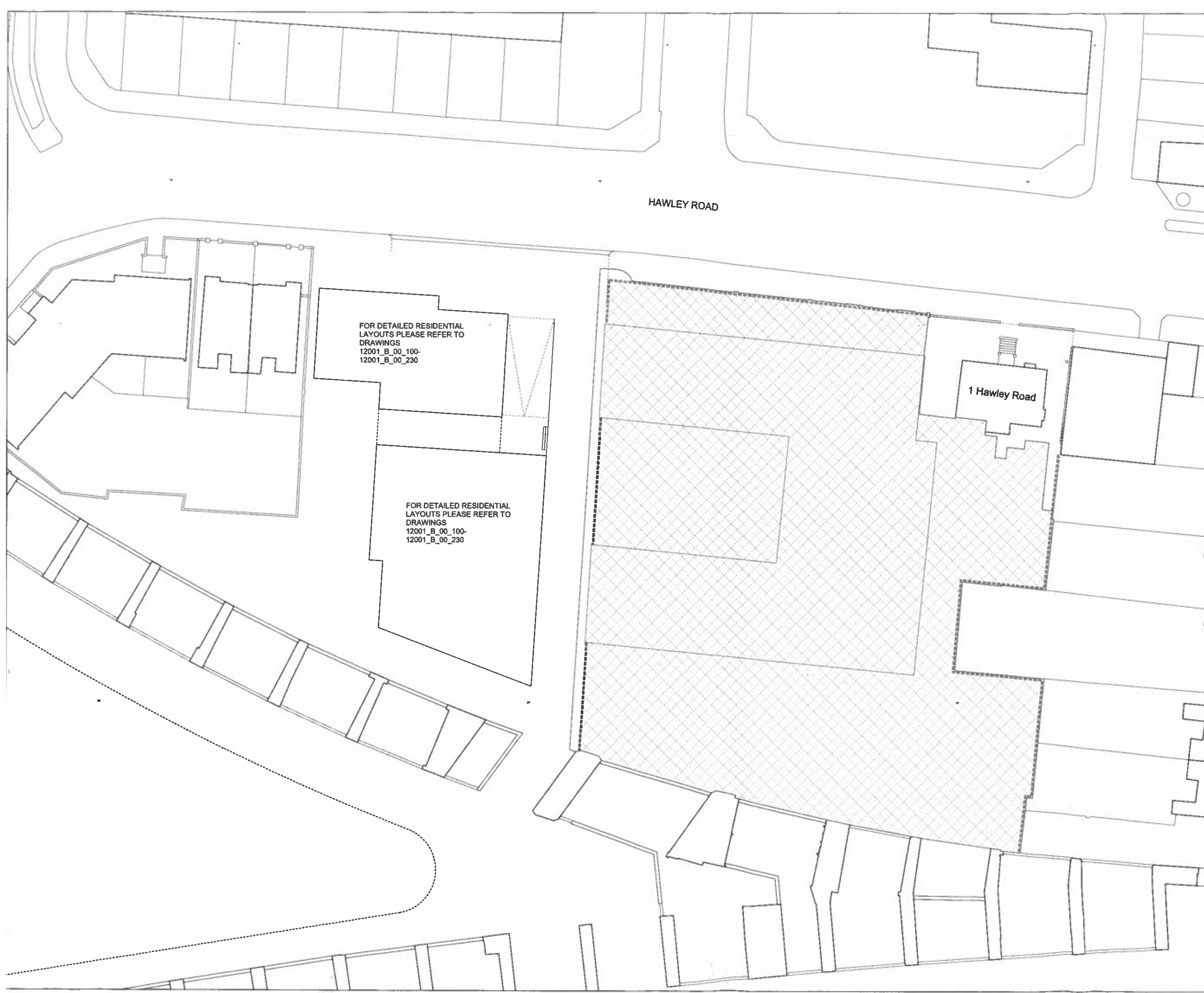


ALLFORD HALL MONAGHAN MORRIS
ARCHITECTS Ltd
2ND FLOOR, BLOCK C, 5-23 OLD STREET LONDON EC1V 9HL
TEL 020 7251 5281 FAX 020 7251 5123 WEB WWW.AHMM.CO.UK

Job title
CAMDEN LOCK VILLAGE

Drawing title / location
**BUILDING SIZE AND LAYOUT
OUTLINE SCHOOL APPLICATION**

drawn by	checked	scale	status
GS	LS	1:200@A1; 1:400@A3	PLANNING
project	zone	source	classification
12001	B	-	[00]
drawing no.	revision		
121	C		



Boundary of outline application

Boundary of Detailed Application for Change of Use and Detailed Listed Building Consent
Please refer to drawings HR_N1853_001 to HR_N1853_018

Extents of building envelope are illustrative only. For more information on maximum and minimum extents of building envelope please refer to drawing 12001_B(00)_121 Rev C

Maximum extent of Play Space/Habitat/Float/Non-net Areas provided at ground & roof level

ELEVATION OF NORTHERN BOUNDARY ENCLOSURE

nts

VISUALLY PERMEABLE ENCLOSURE

SOLID ENCLOSURE

MAX OVERALL HEIGHT 2.4m

MAX SOLID HEIGHT 1.2m

ELEVATION OF EASTERN BOUNDARY ENCLOSURE

nts

VISUALLY PERMEABLE ENCLOSURE

SOLID ENCLOSURE

MAX OVERALL HEIGHT 3.5m

MAX SOLID HEIGHT 2.4m

ELEVATION OF WESTERN BOUNDARY ENCLOSURE

nts

VISUALLY PERMEABLE ENCLOSURE

SOLID ENCLOSURE

MAX OVERALL HEIGHT 3.5m

MAX SOLID HEIGHT 1.5m

B

31/08/12

Issued for planning

A

18/08/12

Issued for information

-

27/07/12

Issued for information

REV

DATE

NOTE

1. Do not scale from this drawing, other than for Planning purposes.

2. All dimensions to be checked on site by the contractor and such dimensions to be his responsibility.

3. Report all drawing errors, omissions and discrepancies to the architect.

4. This document may be issued in an uncontrolled CAD format to enable others to use it as background information to make alterations and/or additions. In that instance the file will be accompanied by a PDF version. It is for those making such alterations and additions to ensure that they make use of current background information. Allford Ltd accepts no liability for any such alterations or additions to the background information or arising out of changes to background information which occur prior to alterations of additions being made.

ALLFORD HALL MONAGHAN MORRIS

ARCHITECTS Ltd

2ND FLOOR, BLOCK C, 5-23 OLD STREET LONDON EC1V 9HL

TEL 020 7251 5281 FAX 020 7251 5123 WEB WWW.AJMM.CO.UK

job title

CAMDEN LOCK VILLAGE

drawing title / location

LANDSCAPE AND AMENITY OUTLINE SCHOOL APPLICATION

drawn by

checked

scale

GS

LS

1:200@A1; 1:400@A3

PLANNING

project

zone

source

classification

drawing no.

revision

12001

B

-

(00)






123

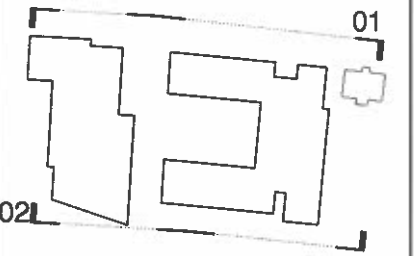
B

NOTES -

Siting of building is indicative only. For further information relating to maximum and minimum extents please refer to drawing 12001_B_000_121

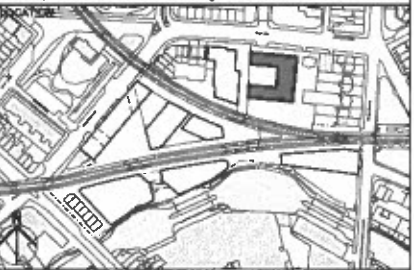
For information relating to boundary enclosure please refer to drawing 12001_B_000_123

-  Maximum Extents to Elevation of School Building
-  Minimum Extents to Elevation of School Building
-  Maximum Extents of Building Projection
-  Maximum Extents of East Block of School Building
-  Minimum Extents of East Block of School Building



REV	DATE	DESCRIPTION
C	31/08/12	Issued for planning
B	16/08/12	Issued for information
A	03/08/12	Issued for information
-	27/07/12	Issued for information

- NOTE
- Do not scale from this drawing, other than for Planning purposes.
 - All dimensions to be checked on site by the contractor and such dimensions to be his responsibility.
 - Report all drawing errors, omissions and discrepancies to the architect.
 - This document may be issued in an uncontrolled CAD format to enable others to use it as background information to make alterations and/or additions. In that instance the file will be accompanied by a PDF version. It is for those making such alterations and additions to ensure that they make use of current background information. AHMM Ltd accepts no liability for any such alterations or additions to the background information or arising out of changes to background information which occur prior to alterations of additions being made.



ALLFORD HALL MONAGHAN MORRIS
ARCHITECTS Ltd
2ND FLOOR, BLOCK C, 5-23 OLD STREET LONDON EC1V 9HL
TEL 020 7251 6261 FAX 020 7251 5123 WEB WWW.AHMM.CO.UK

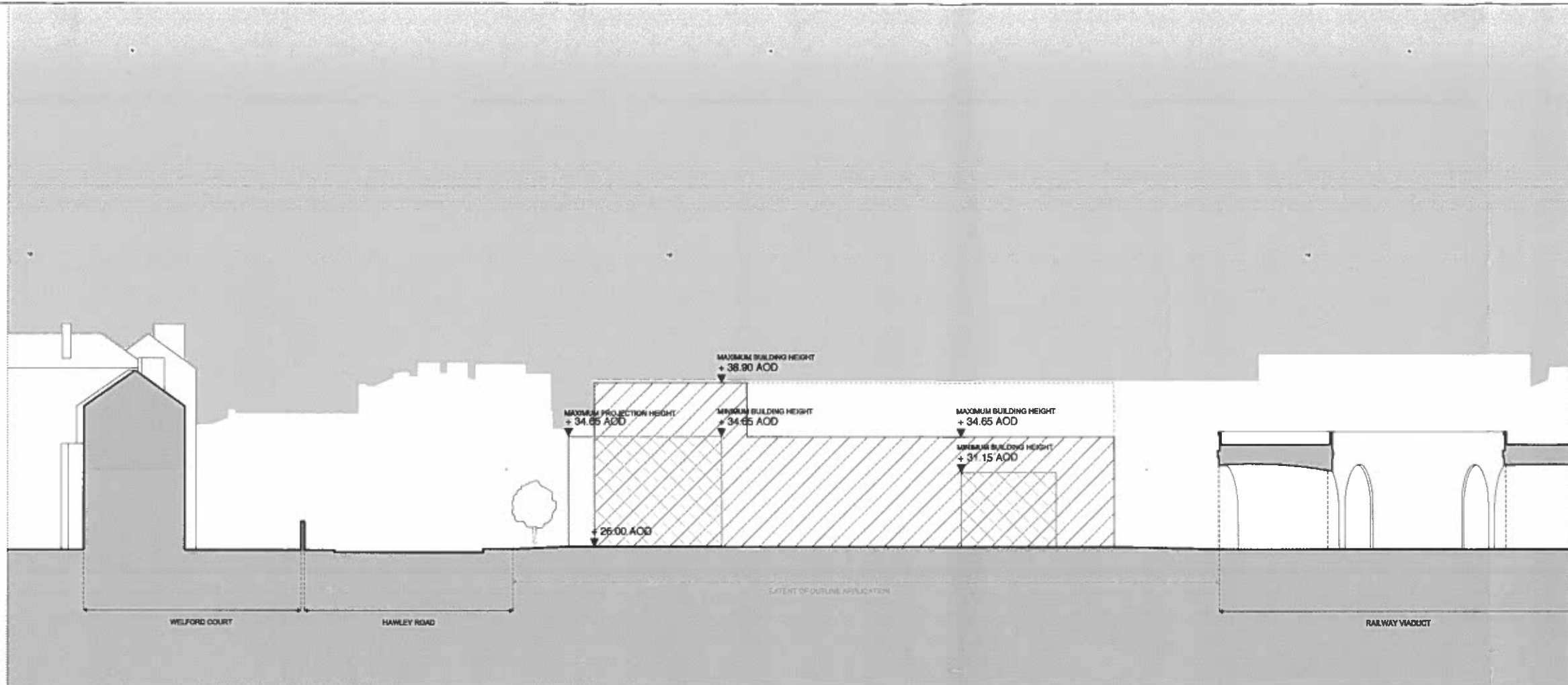
Job title
CAMDEN LOCK VILLAGE

drawing title / location
**BUILDING HEIGHTS - ELEVATIONS
OUTLINE SCHOOL APPLICATION**

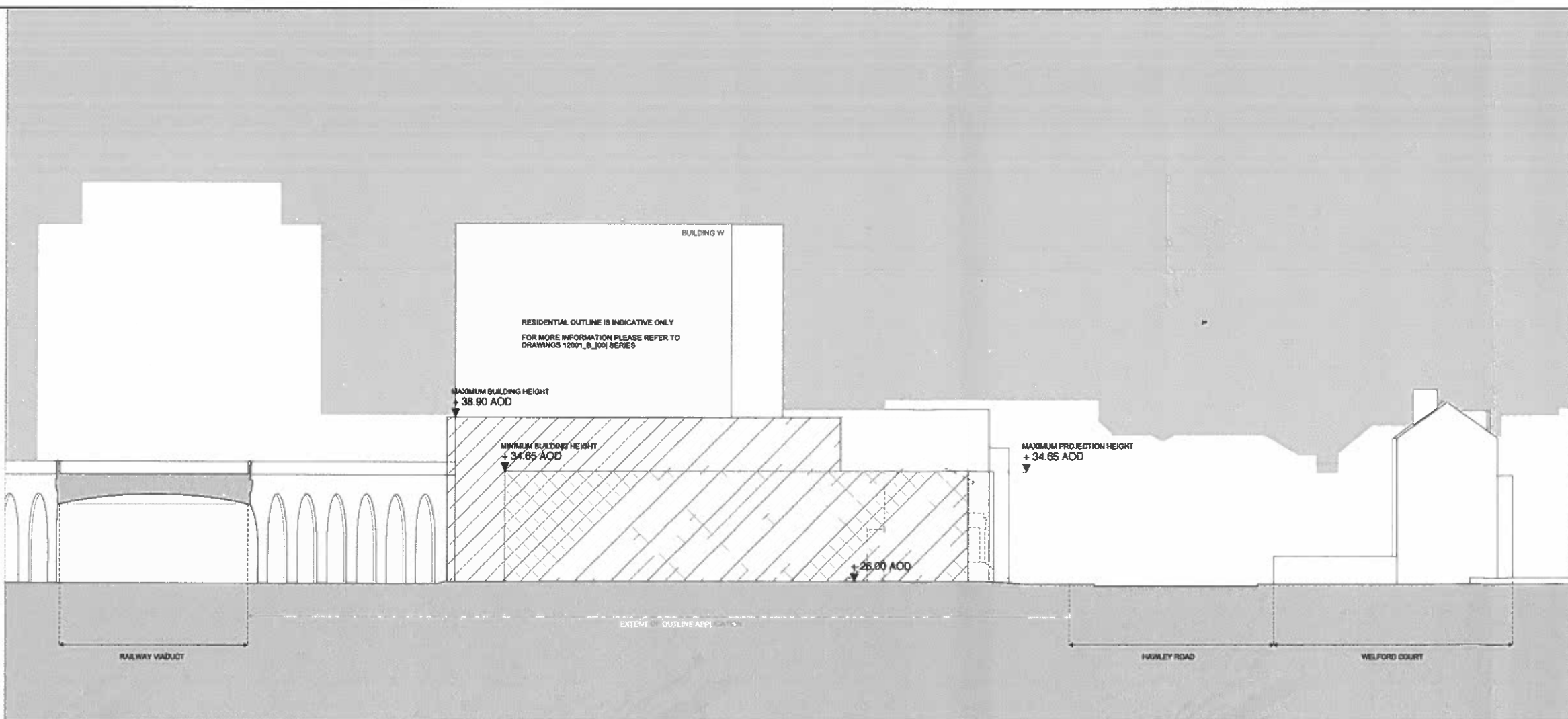
drawn by	checked	scale		status		
GS	LS	1:200@A1; 1:400@A3		PLANNING		
project		zone	source	classification	drawing no.	revision
12001		B	-	(00)	220	C

01 NORTH ELEVATION

02 SOUTH ELEVATION



01 WEST ELEVATION







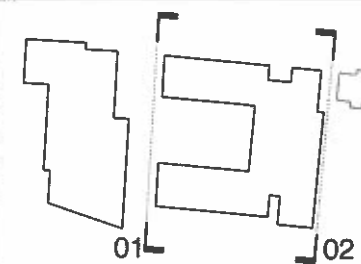
02 EAST ELEVATION

NOTES -

Siting of building is indicative only. For further information relating to maximum and minimum extents please refer to drawing PP4401.

For information relating to boundary enclosure please refer to drawing PP4404

-  Maximum Extents to Elevation of School Building
-  Minimum Extents to Elevation of School Building
-  Maximum Extents of Building Projection
-  Maximum Extents of East Block of School Building



C	31/06/12	Issued for planning
B	18/06/12	Issued for information
A	03/06/12	Issued for information
-	27/07/12	Issued for information

REV DATE

NOTE

- Do not scale from this drawing, other than for planning purposes.
- All dimensions to be checked on site by the contractor and such dimensions to be his responsibility.
- Report all drawing errors, omissions and discrepancies to the architect.
- This document may be issued in an uncontrolled CAD format to enable others to use it as background information to make alterations and/or additions. In that instance the file will be accompanied by a PDF version. It is for those making such alterations and additions to ensure that they make use of current background information. AllM Ltd accepts no liability for any such alterations or additions to the background information or arising out of changes to background information which occur prior to alterations of additions being made.



ALLFORD HALL MONAGHAN MORRIS

ARCHITECTS LTD
2ND FLOOR, BLOCK C, 5-23 OLD STREET LONDON EC1V 9RL
TEL 020 7251 5261 FAX 020 7251 5123 WEB WWW.AHM.CO.UK

Job title

CAMDEN LOCK VILLAGE

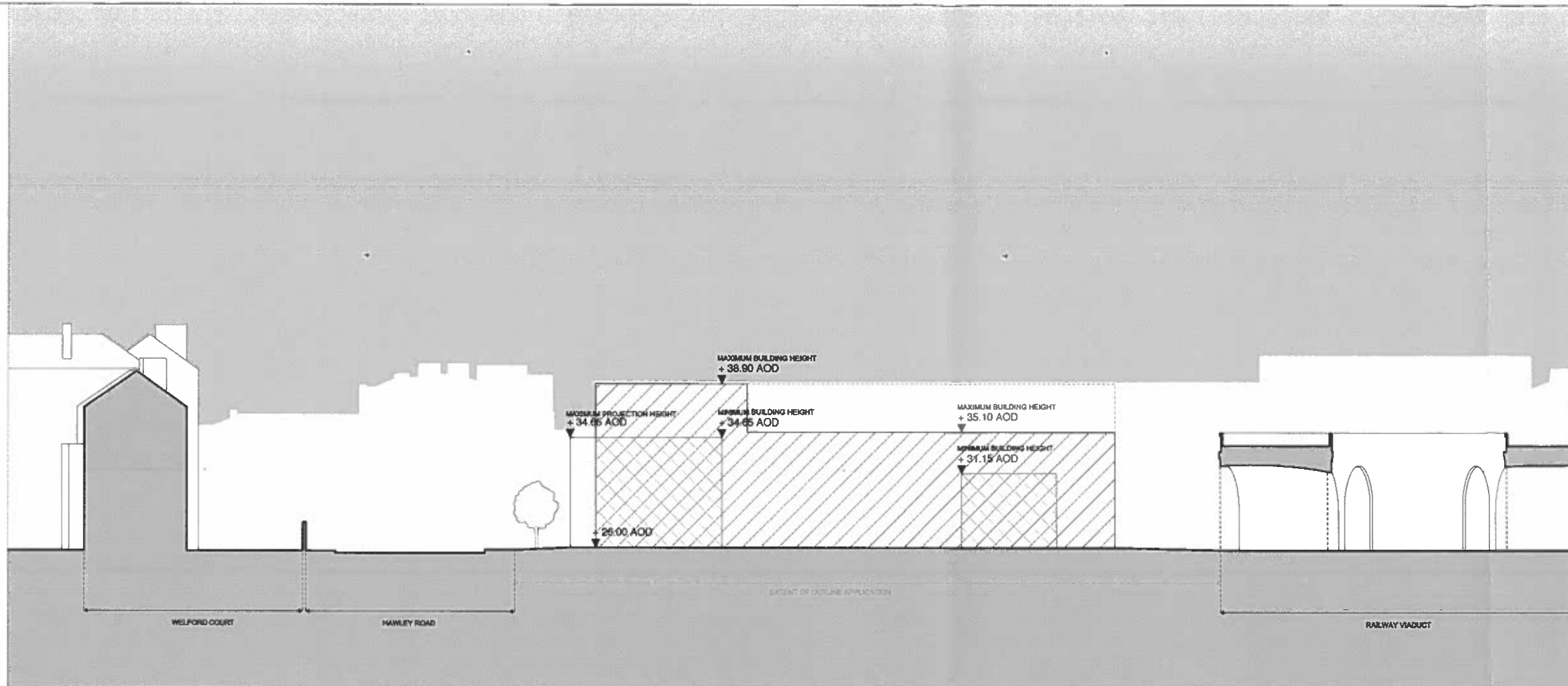
Drawing title / location

BUILDING HEIGHTS - ELEVATIONS
OUTLINE SCHOOL APPLICATION

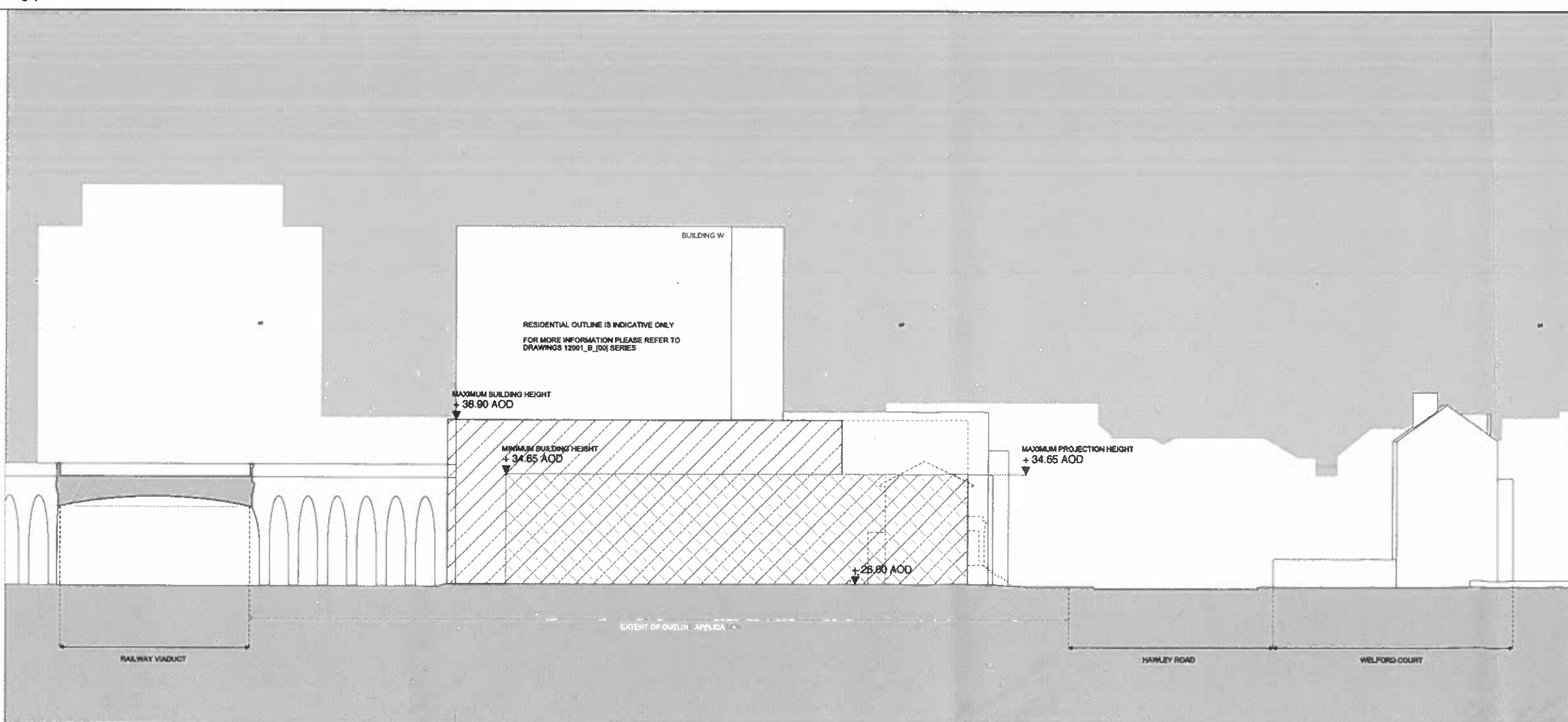
drawn by checked scale status
GS LS 1:200@A1; 1:400@A3 PLANNING

project zone source classification drawing no. revision

12001 B - (00) 221 C



01 WEST ELEVATION







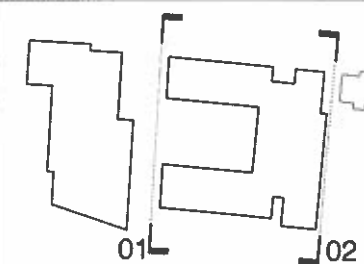
02 EAST ELEVATION

NOTES -

Siting of building is indicative only. For further information relating to maximum and minimum extents please refer to drawing PP4401.

For information relating to boundary enclosure please refer to drawing PP4404

-  Maximum Extents to Elevation of School Building
-  Minimum Extents to Elevation of School Building
-  Maximum Extents of Building Projection
-  Maximum Extents of East Block of School Building



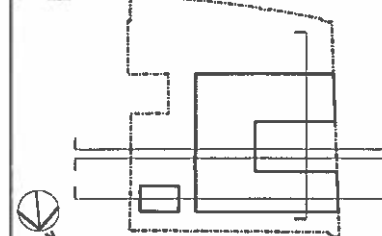
D	13/12/13	Issued for information
C	31/08/12	Issued for planning
B	16/08/12	Issued for information
A	03/08/12	Issued for information
-	27/07/12	Issued for information

REV DATE

NOTE

- Do not scale from this drawing, other than for Planning purposes.
- All dimensions to be checked on site by the contractor and such dimensions to be his responsibility.
- Report all drawing errors, omissions and discrepancies to the architect.
- This document may be issued in an uncontrolled CAD format to enable others to use it as background information to make alterations and/or additions. In that instance the file will be accompanied by a PDF version. It is for those making such alterations and additions to ensure that they make use of current background information. AHMM Ltd accepts no liability for any such alterations or additions to the background information or arising out of changes to background information which occur prior to alterations of additions being made.

LOCATION



ALLFORD HALL MONAGHAN MORRIS

ARCHITECTS LTD
2ND FLOOR, BLOCK C, 5-23 OLD STREET LONDON EC1V 9HL
TEL 020 7251 5281 FAX 020 7251 5123 WEB WWW.AHMM.CO.UK

job title
HAWLEY PRIMARY SCHOOL

drawing title / location
BUILDING HEIGHTS - ELEVATIONS
NON-MATERIAL AMENDMENT APPLICATION






drawn by checked scale status
DM WL 1:200@A1; 1:400@A3 PLANNING

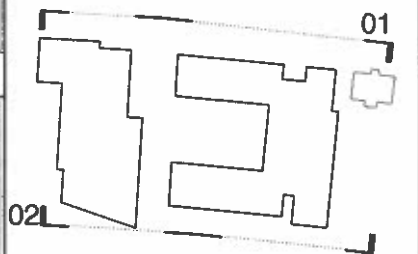
project zone classification drawing no. revision
12160 B - (00) 221 D

NOTES -

Siting of building is indicative only. For further information relating to maximum and minimum extents please refer to drawing 12001_B_[00]_121

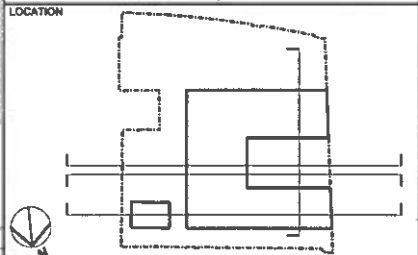
For information relating to boundary enclosure please refer to drawing 12001_B_[00]_123

-  Maximum Extents to Elevation of School Building
-  Minimum Extents to Elevation of School Building
-  Maximum Extents of Building Projection
-  Maximum Extents of East Block of School Building
-  Minimum Extents of East Block of School Building



D	13/12/15	Issued for information
C	31/08/12	Issued for planning
B	16/08/12	Issued for information
A	03/06/12	Issued for information
-	27/07/12	Issued for information

REV	DATE	NOTE
1		Do not scale from this drawing, other than for Planning purposes.
2		All dimensions to be checked on site by the contractor and such dimensions to be his responsibility.
3		Report all drawing errors, omissions and discrepancies to the architect.
4		This document may be issued in an uncontrolled CAD format to enable others to use it as background information to make alterations and/or additions. In that instance the file will be accompanied by a PDF version. It is for those making such alterations and additions to ensure that they make use of current background information. AllM Ltd accepts no liability for any such alterations or additions to the background information or arising out of changes to background information which occur prior to alterations or additions being made.



ALLFORD HALL MONAGHAN MORRIS
ARCHITECTS Ltd
2ND FLOOR, BLOCK C, 5-23 OLD STREET LONDON EC1V 9HL
TEL 020 7251 5281 FAX 020 7251 5123 WEB WWW.AHM.CO.UK

job title
HAWLEY PRIMARY SCHOOL

drawing title / location
**BUILDING HEIGHTS - ELEVATIONS
NON-MATERIAL AMENDMENT APPLICATION**

drawn by DM	checked WL	scale 1:200@A1; 1:400@A3		status PLANNING	
project		zone	—	classification	drawing no.
12160		B	-	(00)	220
					revision D

01 NORTH ELEVATION

02 SOUTH ELEVATION

