
59-61 Leighton Road

Additional Images to accompany non-
material amendments application

January 2014



Zinc Cladding

It is proposed to use interlocking zinc panels from VM zinc, in place of the “slate cladding” noted on the set back top floor, and the “copper cladding” to the projecting bay on the consented drawings.

The copper cladding would be problematic for a number of reasons as discussed at our meeting on 18.12.13:

1. Copper does not weather evenly and the transition stages can look unsightly.
2. Because the projecting bay would be within accessible reach, this is seen as being vulnerable to theft, and a security risk.
3. It is not readily available, and sourcing copper cladding can be problematic.
4. Copper is not a sustainably sourced material.

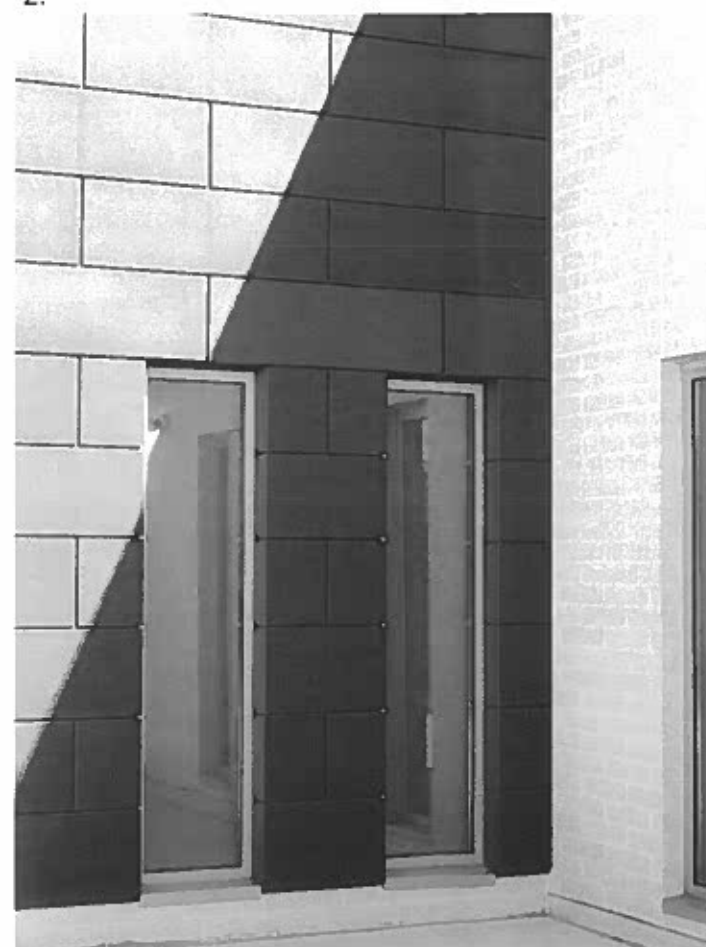
In addition, slate cannot be used in a vertical situation so would not be feasible for the recessed top floor unless there is a visible hook or rail system used which is deemed unsightly.



1.



2.



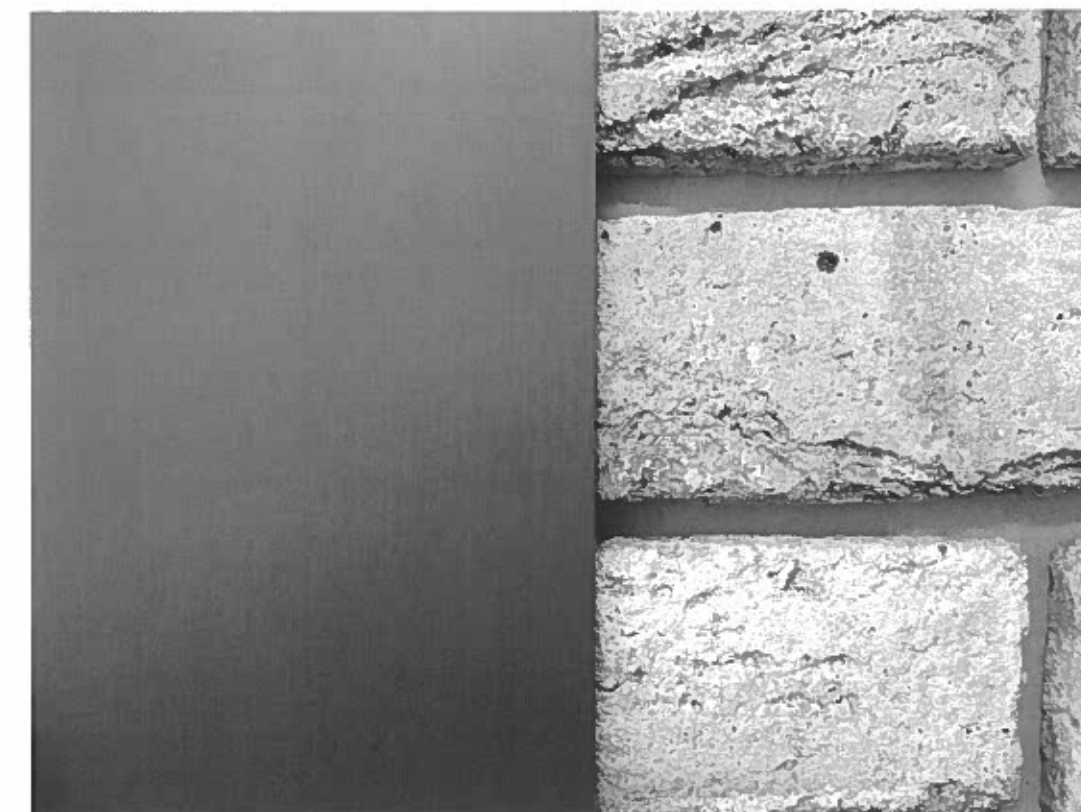
3.

The following precedent images help to illustrate the Zinc detailing proposed as follows:

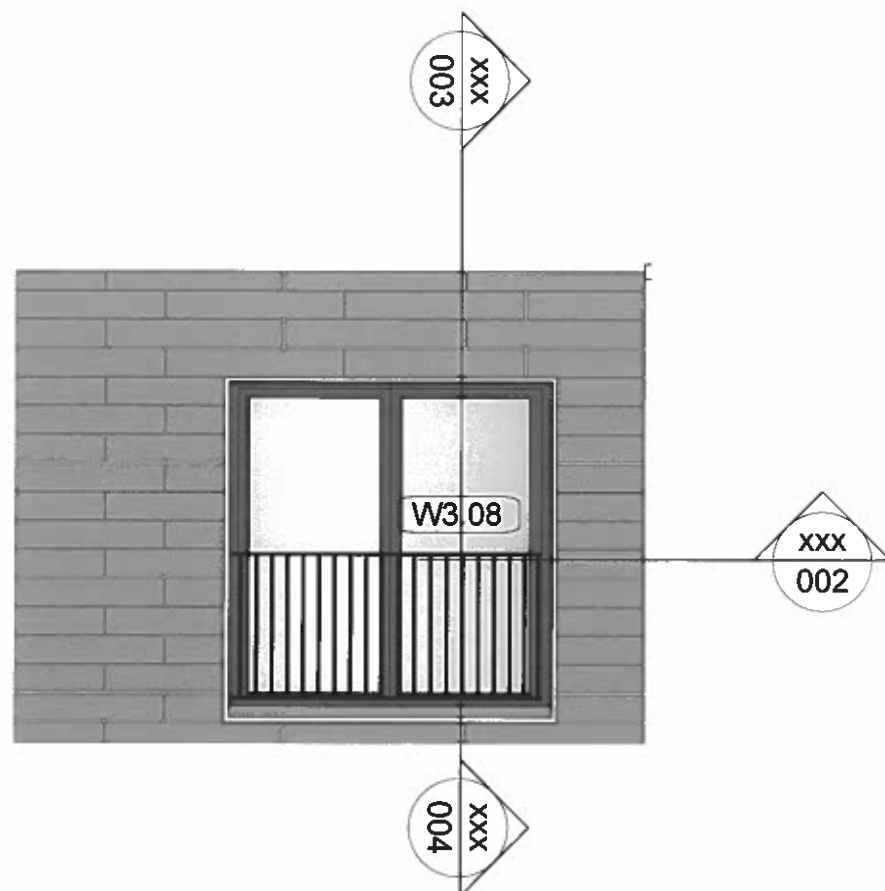
1. Interlocking brown zinc panels from VM Zinc on our project at 66-68 Paul Street.
2. Zinc cladding showing integrated parapet detail.
3. Zinc clad roof element showing crisp detailing of joints.
4. Brown zinc shown with brick sample - the warm brown highlights the darker tones in the brick.

It is proposed to use dark brown powder coated metal window frames, window reveals, doors, gates, copings, railings and external stairs. These details will also tie in with the colour of the zinc cladding.

The detailed drawings on the following 2 pages show a typical zinc window detail and a parapet detail which has been developed to have the lowest profile possible with the required roof build-up.

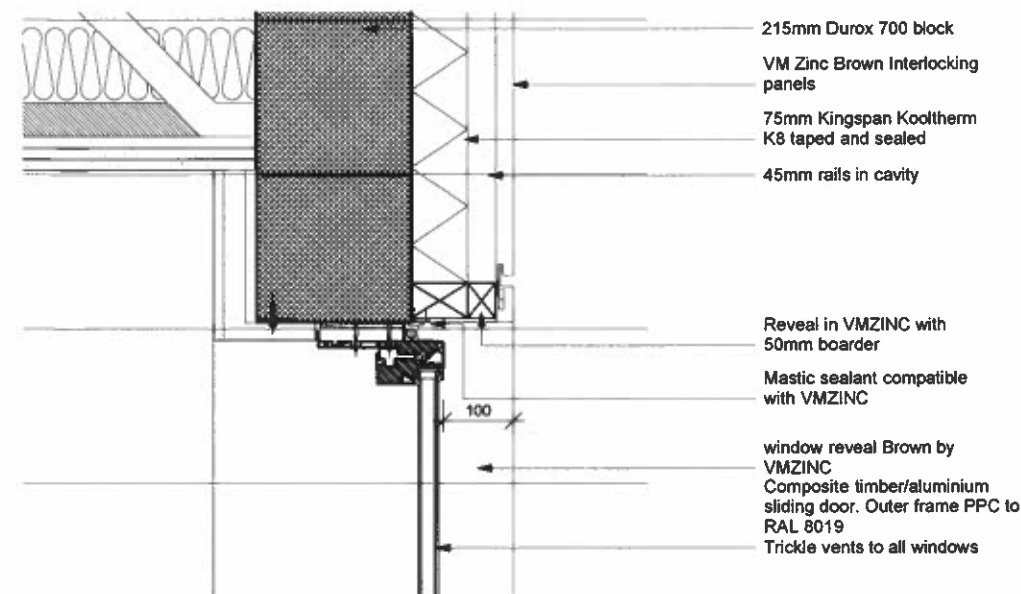


4.



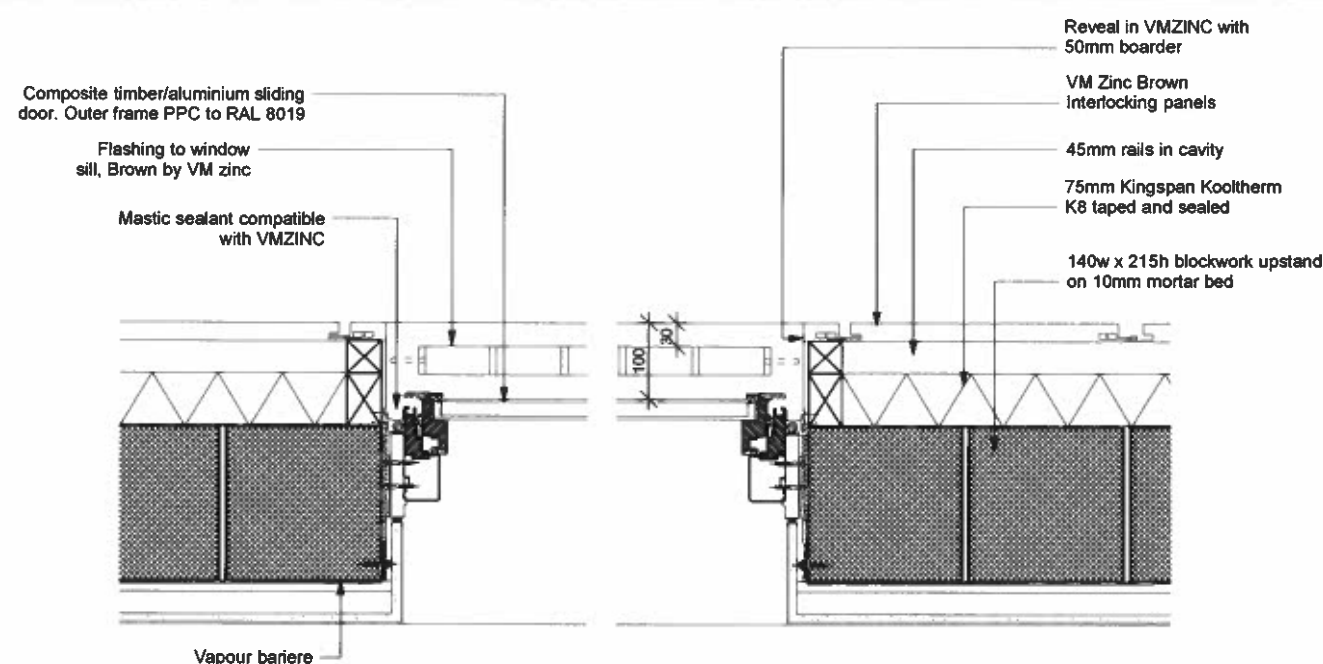
001

ELEVATION
Scale 1:100



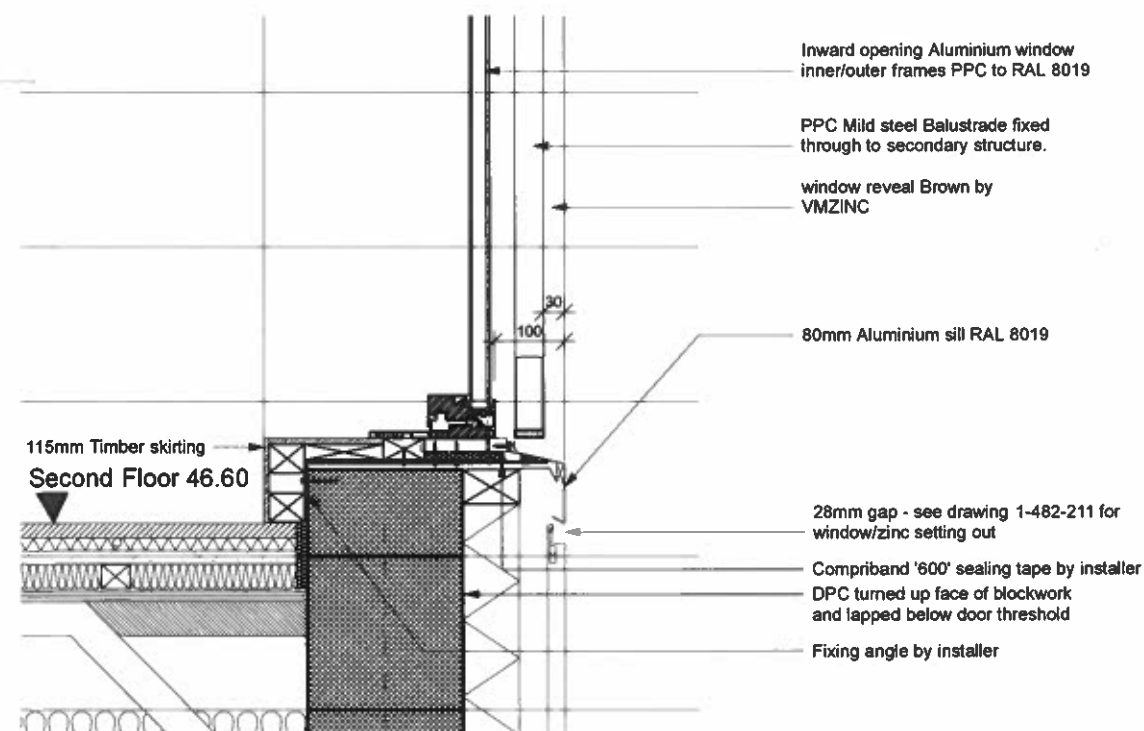
003

SECTION HEAD DETAIL
Scale 1:10



002

PLAN JAMB DETAIL
Scale 1:10



004

SECTION SILL DETAIL
Scale 1:10

1 Update and change drawing 14/01/14
REV COMMENTS DATE CHK

STATUS

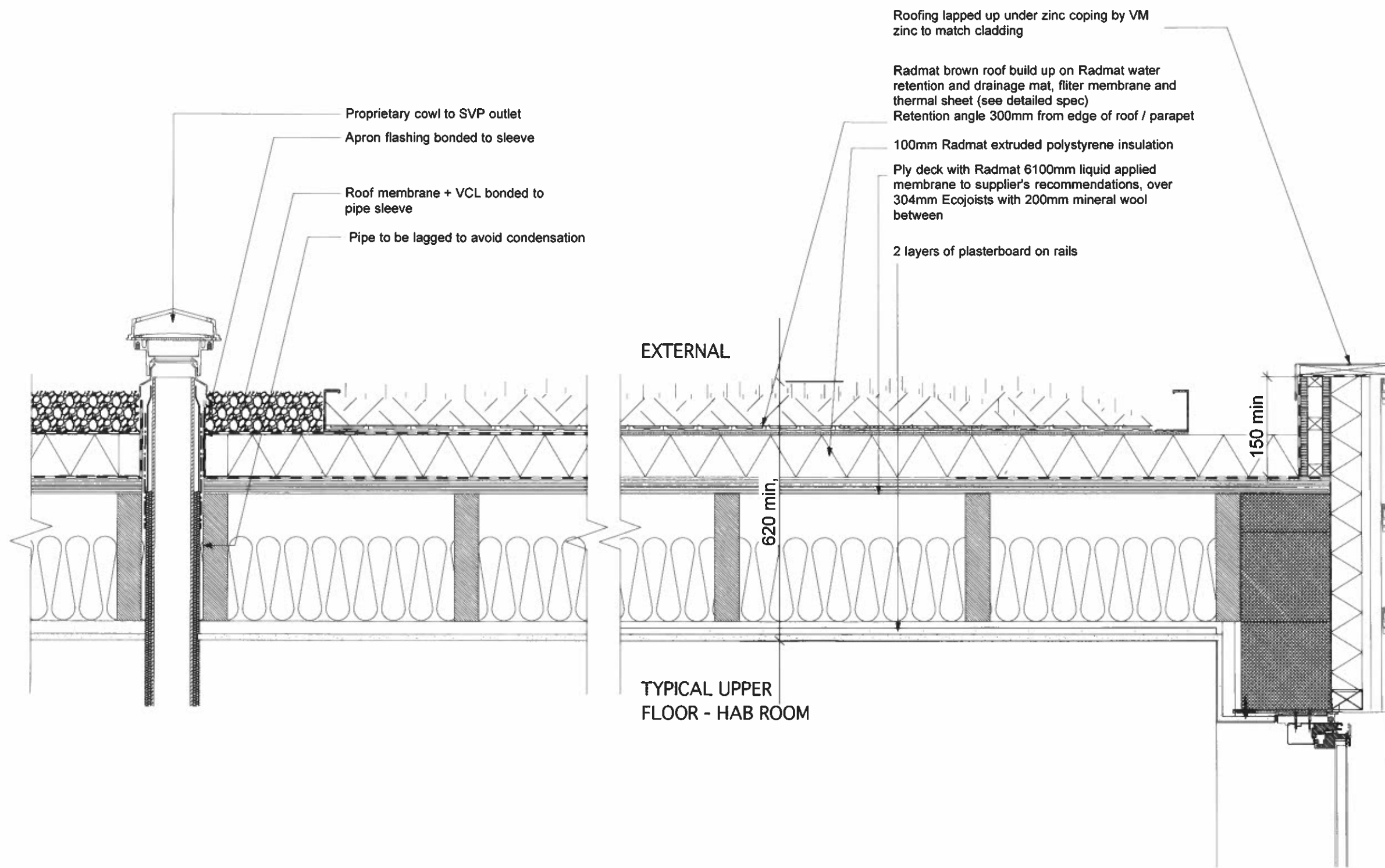
INFORMATION

Job Leighton Road
Title Window with Juliette/zinc
Date October 2013
Scale 1:10 @ A3
Drawn MA

Waugh Thistleton
Architects Ltd
74 Paul Street
London EC2A 4NA
Telephone
+44 (0)20 7613 5727
Fax
+44 (0)20 7613 5749
email/web
waughthistleton.com

T-1-482-533A

Waugh
Thistleton
architects



1 Section 1 - Main roof parapet and svp
540 1:10

REV	COMMENTS	DATE	RC
A	Project amended		

STATUS

INFORMATION

Job Leighton Road

Title Roof detail 1

Date 21 October 2013

Scale 1:10 @ A3

Drawn RC

T-1-482-540

Waugh Thistleton
Architects Ltd
74 Paul Street
London EC2A 4NA

Telephone
+44 (0)20 7613 5727

Fax
+44 (0)20 7613 5749

email
enquiries@waughthistleton.com

architects Waugh
Thistleton