

CONSTRUCTION KEY

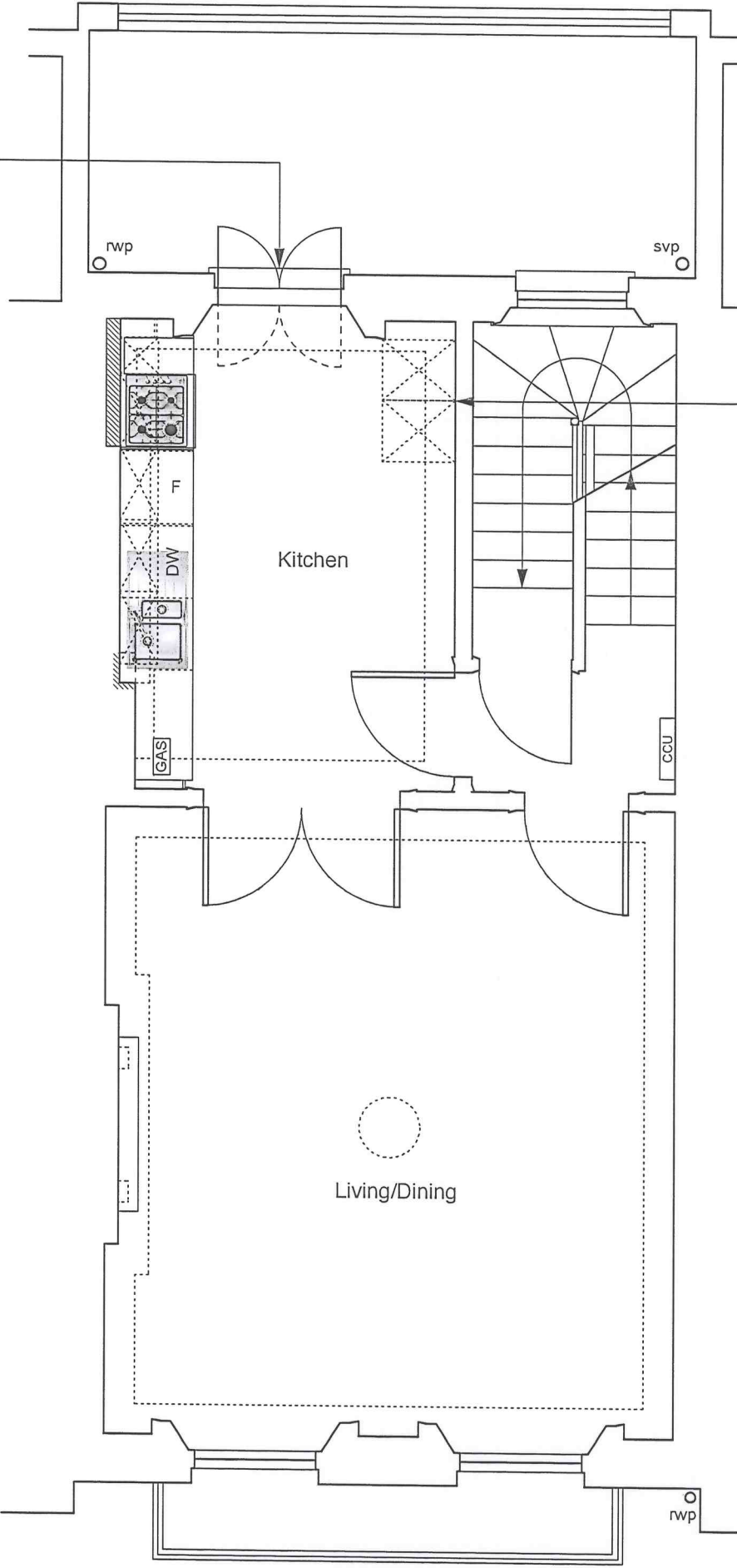
existing retained

line over/under/behind

demolished

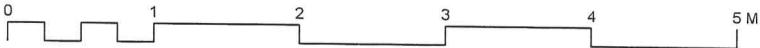
new construction

new double glazed outward opening doors and fanlights over



indicates position of potential additional kitchen tall storage units

NO STRUCTURAL AMENDMENTS



project5

ARCHITECTURE

PROJECT 5

ARCHITECTURE LLP

8 Waterson Street

London E2 6HL

T: +44 (0)20 7739 9131

F: +44 (0)20 7739 3687

E: info@p5a.co.uk

job title

13 FREDERICK STREET, LONDON WC1X 0NF

drawing

FIRST FLOOR PLAN - PROPOSED

Ellis and Moore Ltd
CONSULTING ENGINEERS

Drawing No
14441 / Sk03