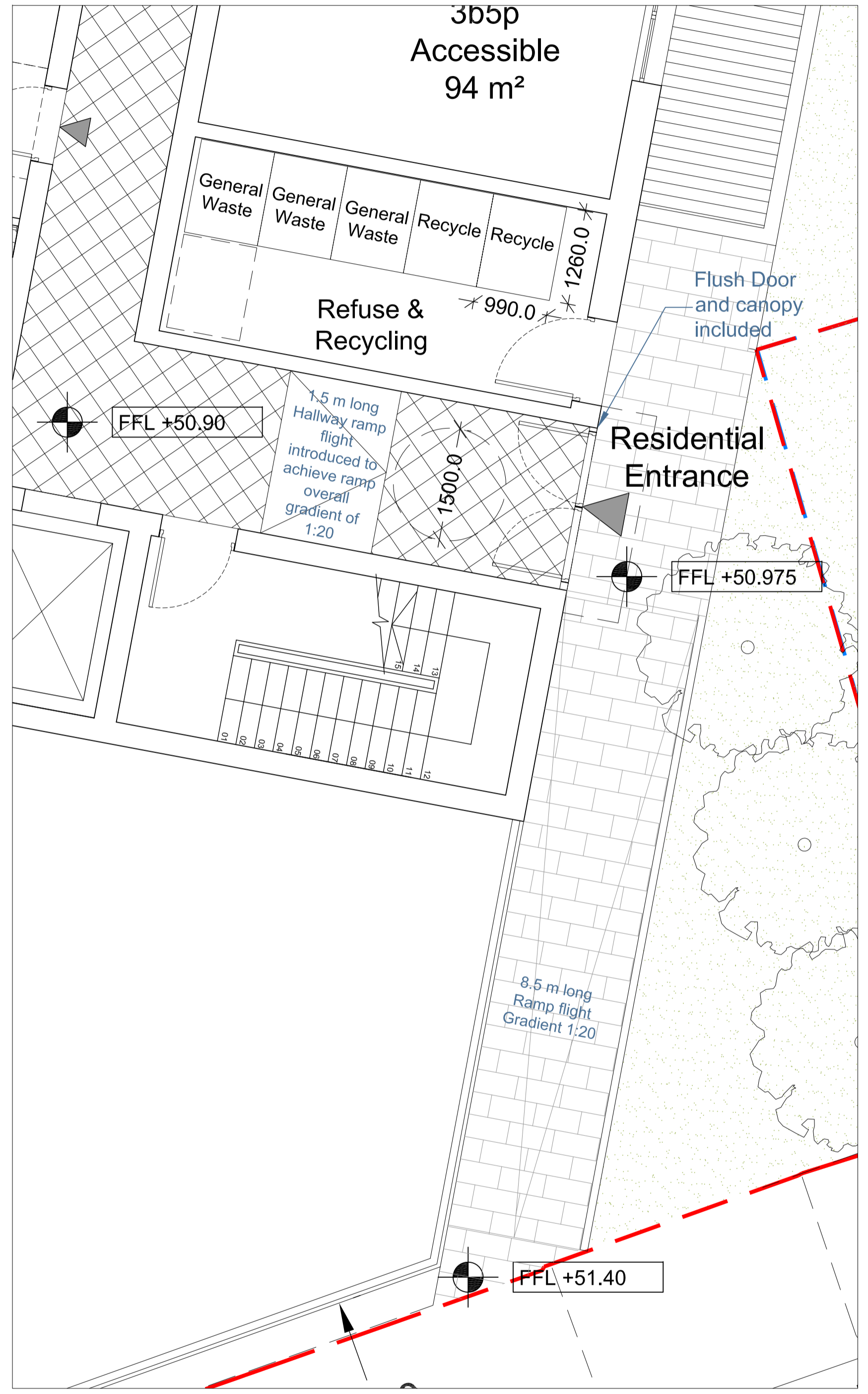
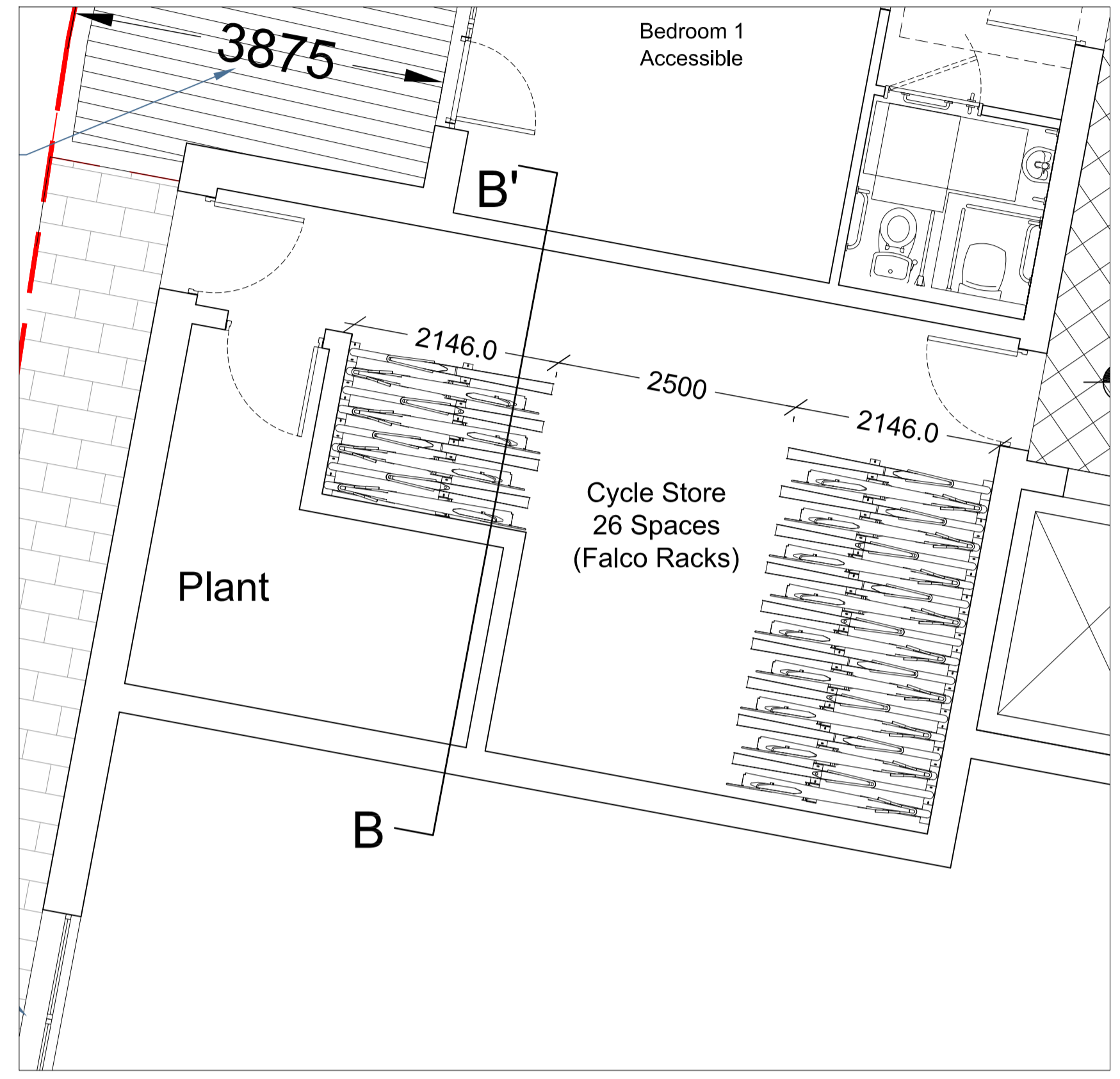


NOTES



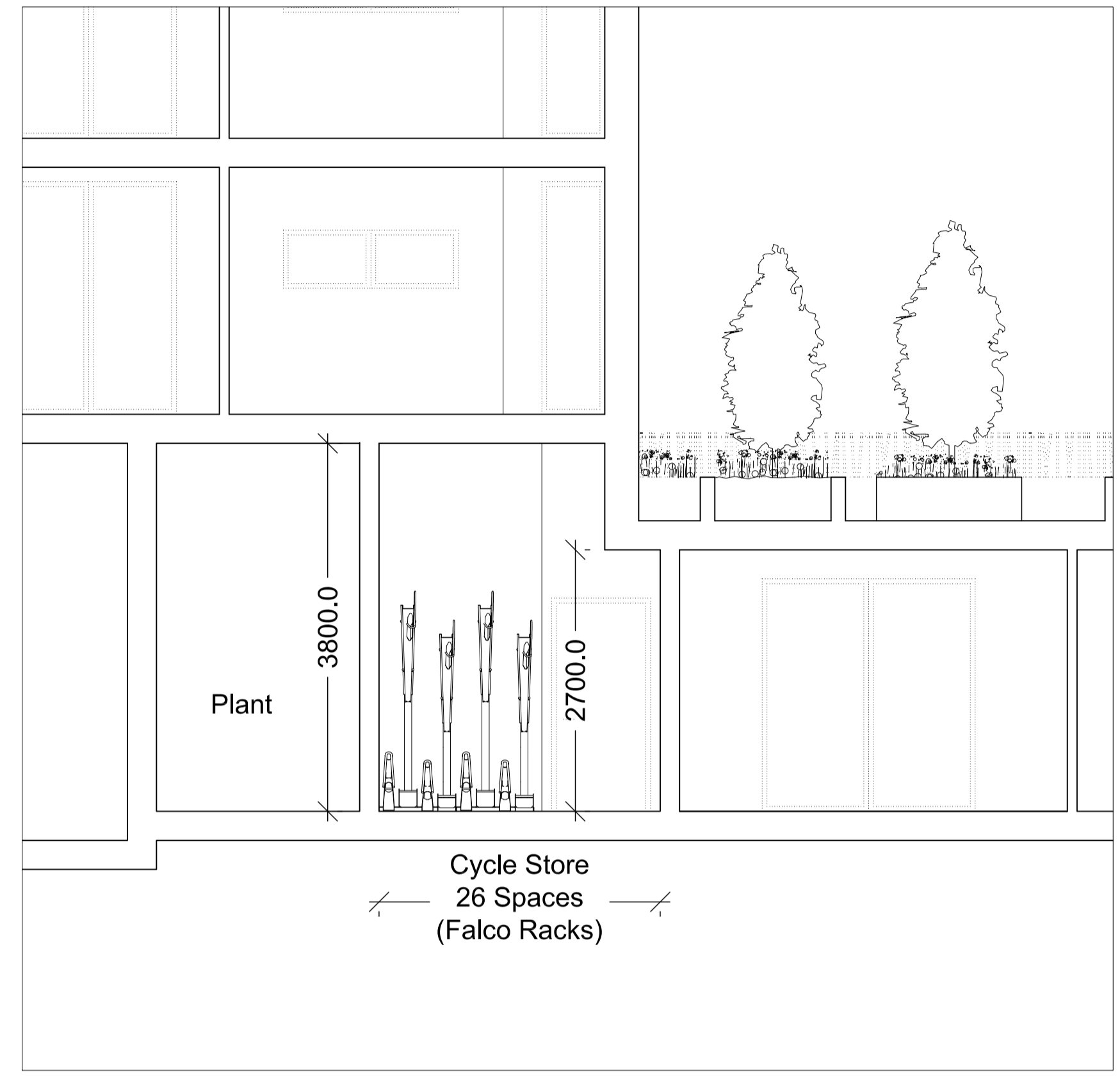
Refuse Storage Detail Plan & Access Ramp and Door Revision
 Scale 1:50@A3

- 3 eurobins 1100 l. for General Waste
- 2 eurobins 1100 l. for Recycle
- Lifetime Homes recommended gradient for 500 mm. rise 1:20 (10 m. long flight to achieve it).
- 2 flights proposed: External of 8.5 m. + Hallway flight of 1.5 m= 10m in total.
- Flush main door to avoid SBD issues and canopy introduced to shelter entrance.



Cycle Storage Detail Plan
 Scale 1:50@A3

- Provision for 26 cycle spaces
- Please see specification for Falco Racks 00.304-series



Cycle Storage Detail Section BB'
 Scale 1:50@A3 (See A 120 001 P0_Section AA)

- Falco Racks 00.304-series minimum headroom height required 2.7 m.

rev	amendments	date	by
P2	Cycle Storage Revision	16.01.14	JB
P1	Quoting revised	15.01.14	JB
P0	Issued for Planning	15.01.14	JB

dexter moren associates
 architecture urban design
 interior design creative media
 www.dextermoren.com
 dmail@dextermoren.com

57d
 jamestown road
 london nw1 7db
 UK

t: 020 7267 4440
 f: 020 7267 6044

architecture

project
 159-161 Iverson Rd.

client
 McGregor Homes Ltd.

drawing title
Refuse & Cycle Storage Entrance Revision

drawing status
Planning

scale	date	drawn by	checked by
1:25 @ A1	15.01.14	JB	HL
1:50 @ A3			

job no.	drawing no.	revision
0974	A-130-001	P2