



**VOLVO**

Volvo Cars Central London

020 7383 8000

R

CLEVELAND STREET

OFFICES TO LET

Mary Magdalene Church

WHERE DO YOU WANT TO PARK TODAY?

0076

0076

B71



## 2.6 Existing building

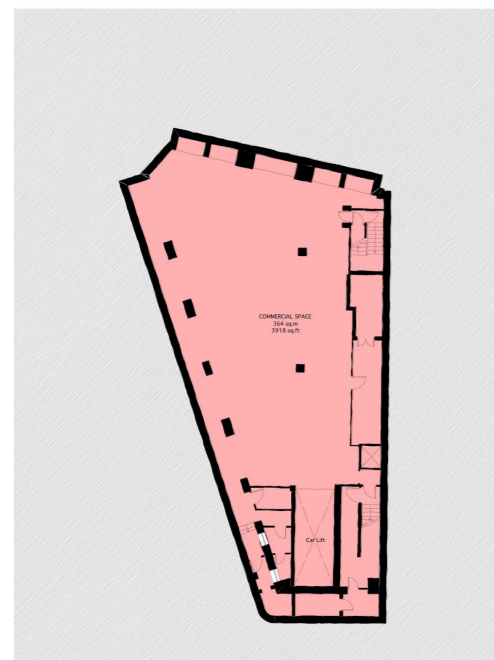
The existing building is allocated as Sui Generis Car Showroom at ground and basement level with vacant B1 office use from first to third floors.

From initial inspection the building appears to have been constructed in the late 1920's or early 1930's with the lightwells constructed of brick at an earlier date than the rest of the building.

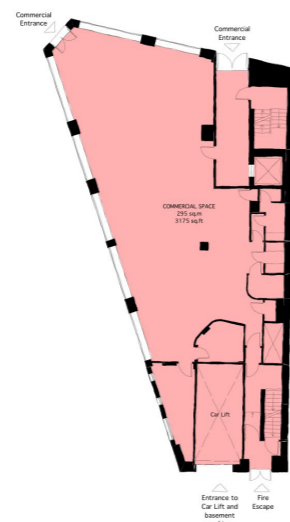
The upper floors of the building has a robust concrete frame with a stone ashlar facade with rustication. Currently the office floors have false ceilings which are in a general state of disrepair.



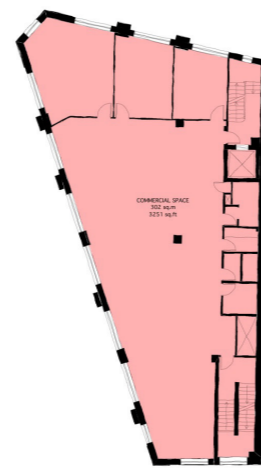
Euston Road street elevation



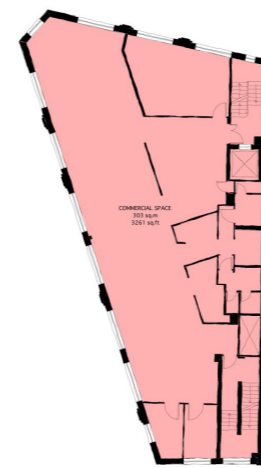
Basement



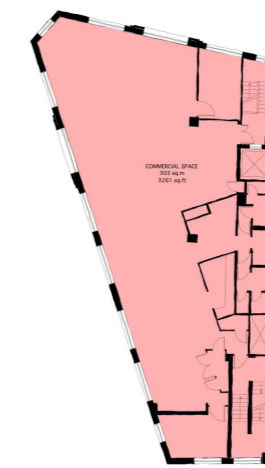
Ground



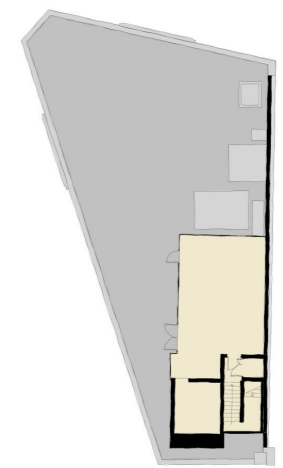
First



Second



Third



Roof

Existing floor plans