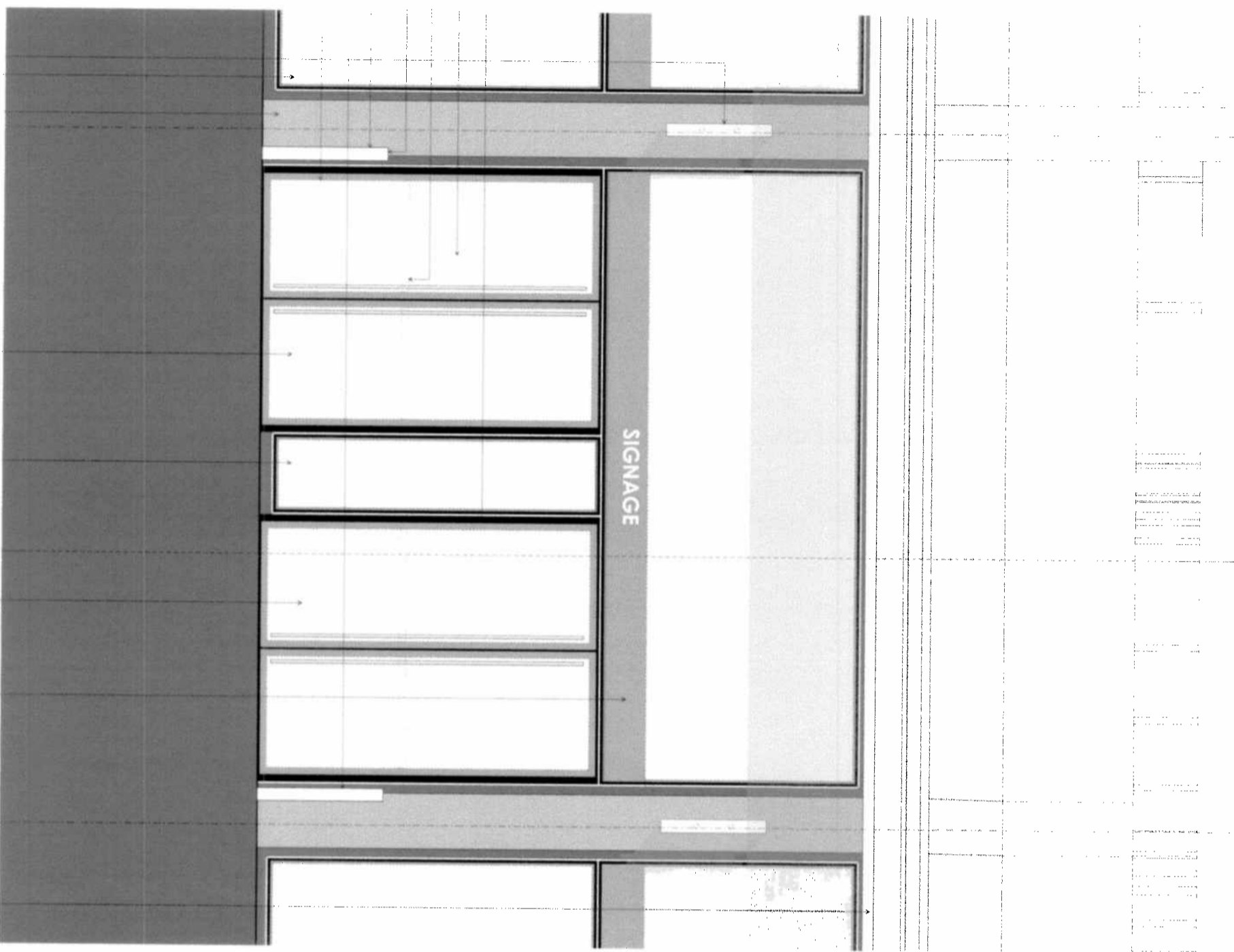


PROPOSED

27

8
PL 313

28

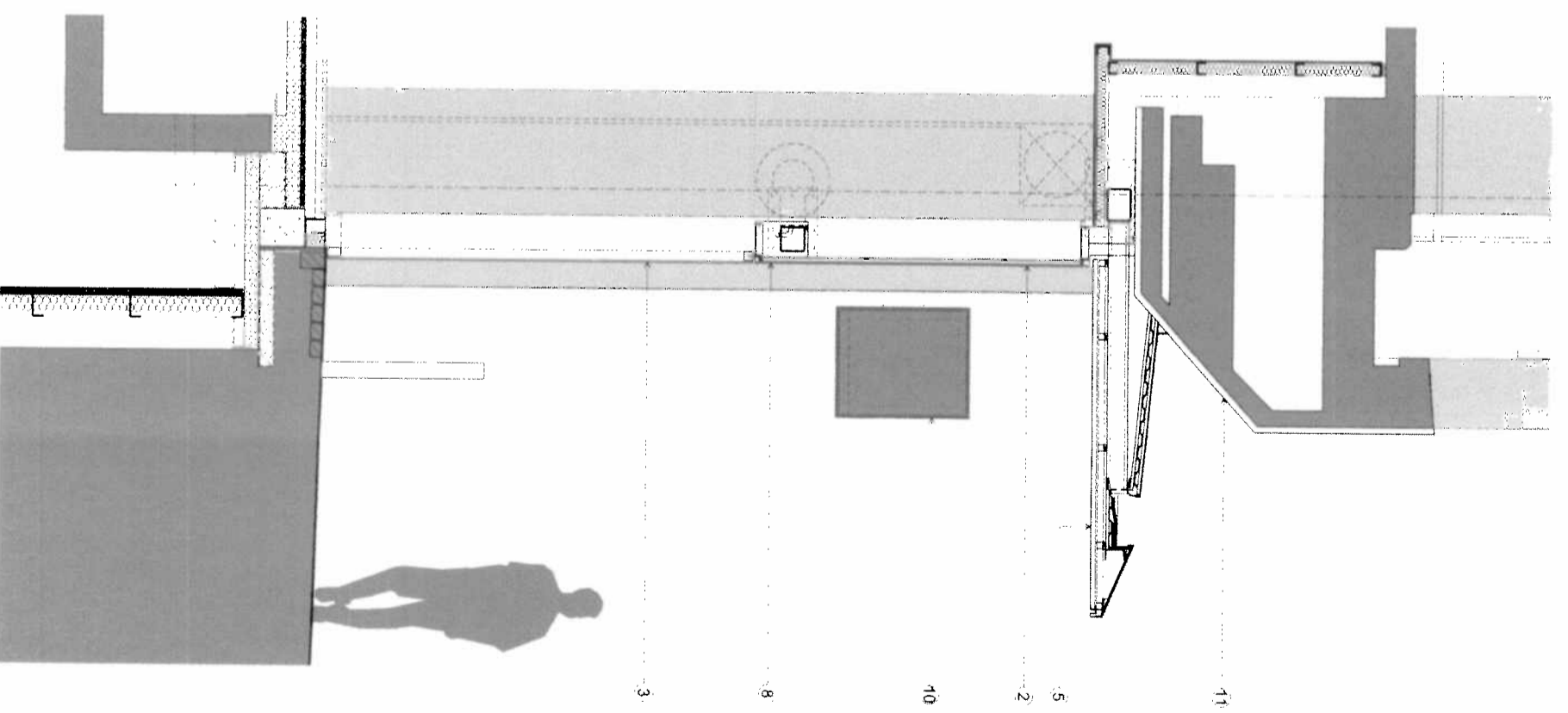


- Additional set of manual double doors
- Automatic outward opening double doors
- Emergency push bars to inside of door
- Push bar mounted to inside to operate automatic door
- Stainless steel outward
- Stainless steel outward
- Stainless steel outward with required push bar to operate automatic door

FFL + 27.370

10.2 1 12 2 3 8 5

A
Amended Proposal
PL 313
Totterham Court Road Elevation Detail
1:20



- Notes
- Materials Key
- 1 Existing granite column linings
 - 2 Proposed glazed facade
 - 3 Proposed glass doors
 - 4 Proposed metal mesh wall linings
 - 5 Proposed canopy
 - 6 Integrated lighting within canopy
 - 7 Solid metal facade panel
 - 8 Structural glazing band with integrated signage & solar header
 - 9 Existing joists
 - 10 Flag signage
 - 11 Existing granite
 - 12 Proposed automatic glass doors

P1 05.12.13 Issued for non-material amendment

Revision

ORMS
Architecture
Design

1 Pine Street London EC1R 0JH
T 0207 833 8533 F 0207 837 7575
E orms@orms.co.uk

Project Central Cross, Phase 3 - Retail
Drawing title Amended Proposal
Totterham Court Road Elevation Detail

Scale 1:20 @ A1 DWG No
Date December 13 1917 PL 313 Rev P1

Status For information For tender For construction

2. This drawing is the property of ORMS and shall remain the property of ORMS. It is not to be used for any other project without the written consent of ORMS.