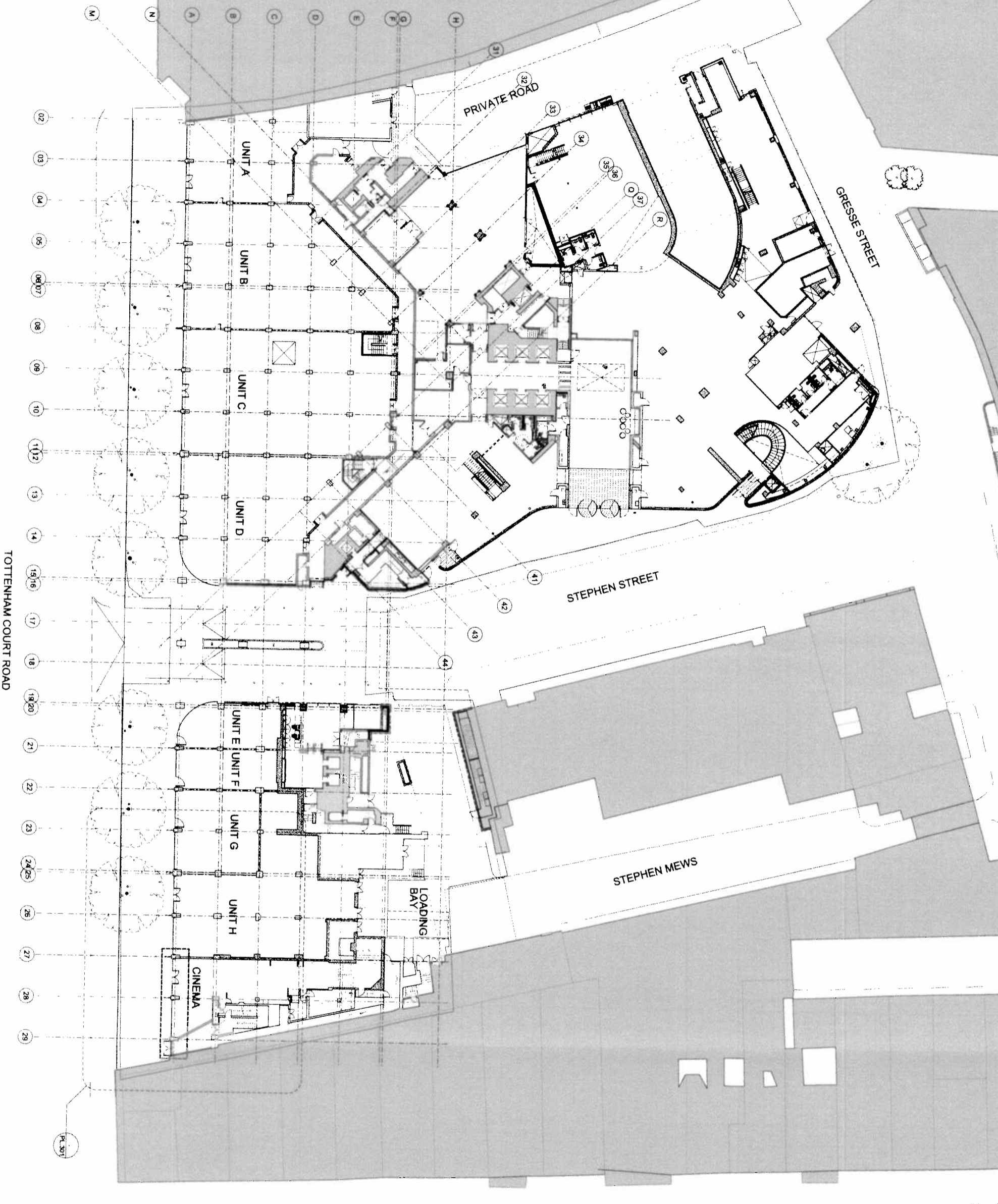


CONSENTED



TOTTENHAM COURT ROAD

ORMS
Architecture Design

1 Pine Street London EC1R 0JH
T 0207 833 8533 F 0207 837 7575
E orms@orms.co.uk

Project: Central Cross, Phase 3, Retail
Drawing title: Site Plan
Consented Proposal

Scale: 1:250 @ A1
Date: December '13
1917 PL 300 Rev: P1

Stable: For information For tender For construction

Revision: P1 06.12.13 Issued for non residential amendment

Notes:
 - Solid Orange Line: Site Boundary Line
 - Dashed orange line: Demarcation of proposed site boundary