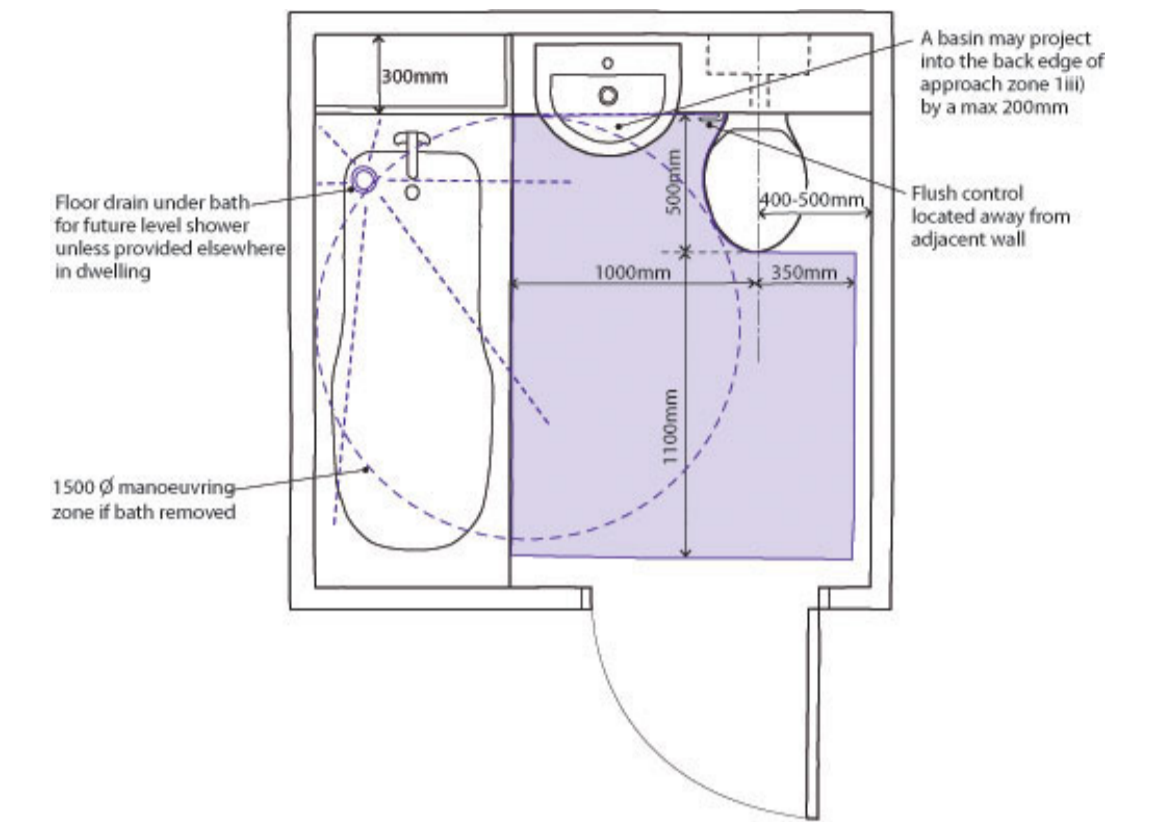


**GENERAL NOTES:**

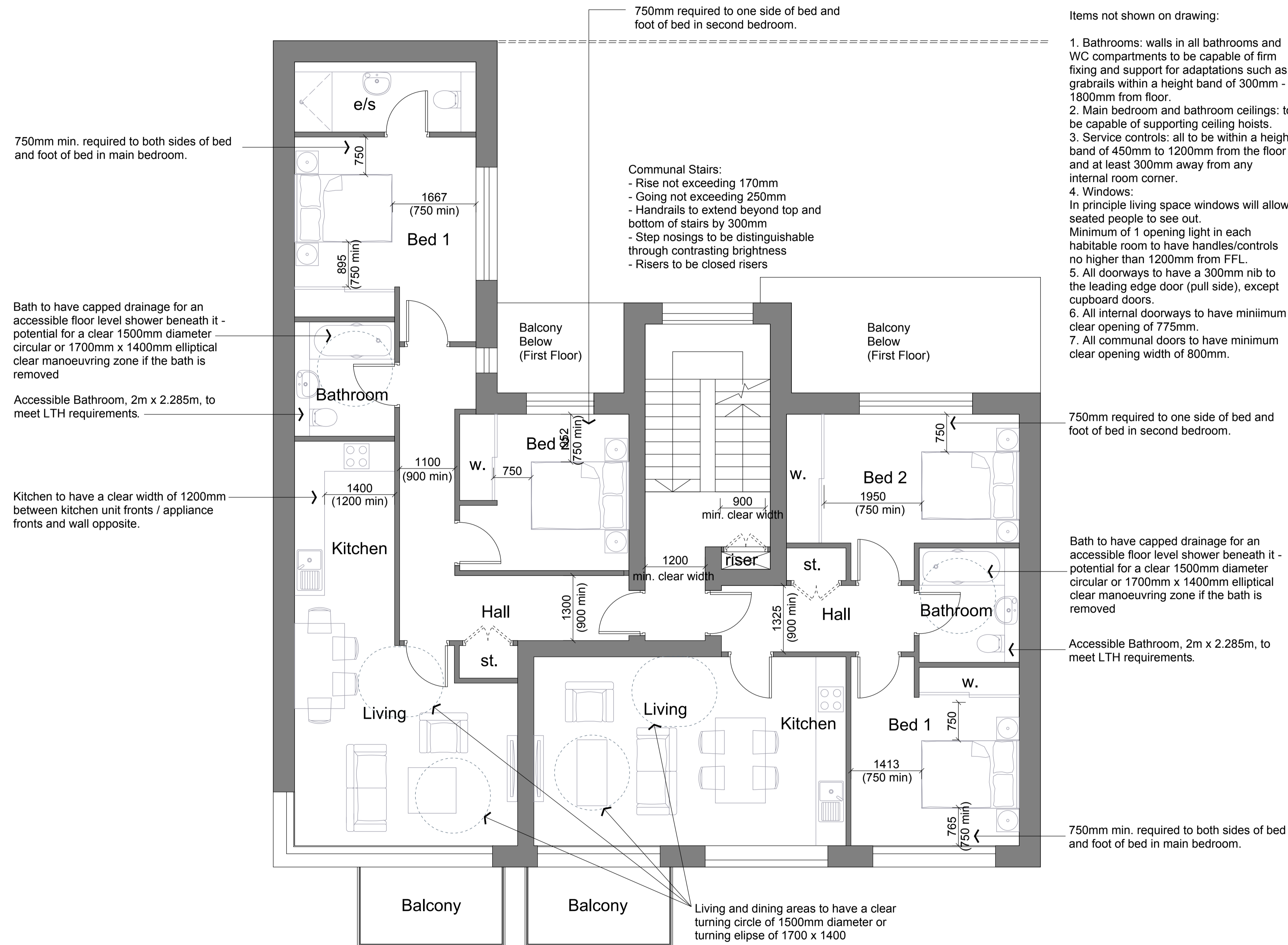
This drawing illustrates Lifetime Homes compliance criteria for the Second Floor (Third Floor identical)

Items not shown on drawing:

1. Bathrooms: walls in all bathrooms and WC compartments to be capable of firm fixing and support for adaptations such as grabrails within a height band of 300mm - 1800mm from floor.
2. Main bedroom and bathroom ceilings: to be capable of supporting ceiling hoists.
3. Service controls: all to be within a height band of 450mm to 1200mm from the floor and at least 300mm away from any internal room corner.
4. Windows: In principle living space windows will allow seated people to see out. Minimum of 1 opening light in each habitable room to have handles/controls no higher than 1200mm from FFL.
5. All doorways to have a 300mm nib to the leading edge door (pull side), except cupboard doors.
6. All internal doorways to have minimum clear opening of 775mm.
7. All communal doors to have minimum clear opening width of 800mm.



Bathrooms at Ferdinand Street are based upon this Lifetime Homes example diagram (NTS)



00	Issued for Town Planning	SH	25Nov13	DL
Mark	Revision	Drawn	Date	Checked

**lees munday • architects**

28 Westonfields  
 Albury  
 Guildford  
 Surrey  
 GU5 9AR  
 01483 203285 / 07795 158754 / 07946 203056  
 mail@leesmunday.com

Client's name  
**Optic Realm**

Job title  
**Ferdinand Street**

Drawing title  
**Plan Second Floor  
 Lifetime Homes Compliance  
 (Third Floor Identical)**

Scale  
**1 : 50 @ A1, 1 : 100 @ A3**

Drawn	Checked	Date
SH	DL	25Nov13

Job No	Drawing No	Rev
13-011	460-104	00

Status  
**TP SUBMISSION**