

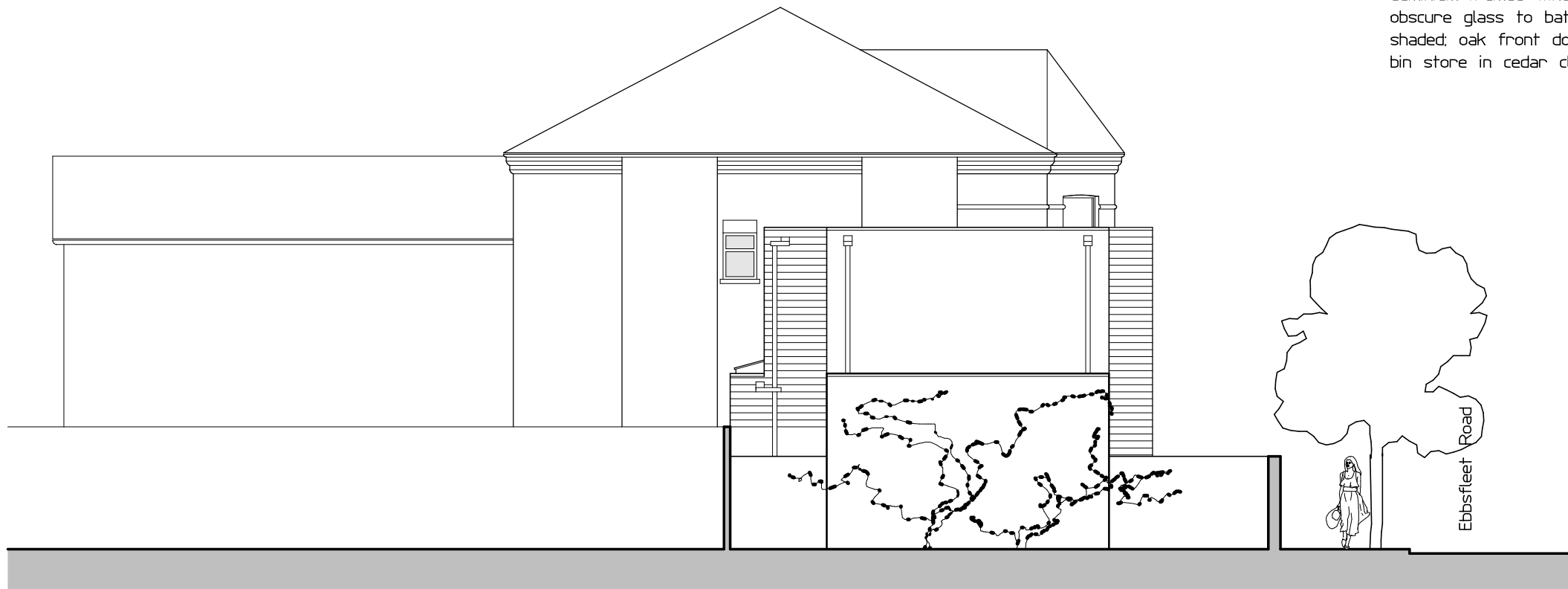
Fordwych Road



NORTH ELEVATION, facing Ebbsfleet Road

FRONT ELEVATION of new house, white-painted brickwork to ground floor, to match no. 194, with cedar cladding above; aluminium-framed windows with obscure glass to bathrooms shown shaded; oak front door; bike and bin store in cedar cladding

front elevation of 19 Ebbsfleet road



SIDE/EAST ELEVATION, side elevation of 19 Ebbsfleet Road beyond; white-painted brick walls; cedar cladding to staircase



PROJECT 194a FORDWYCH ROAD, NW2 3NX

DRAWING ELEVATIONS AS PROPOSED - 1

NUMBER 1658/07 Rev A

Scale 1/100 42 Colebrooke Row  
London N1 8AF  
Date 11.13 tel 020-7226 3884  
copyright protected fax 020-7226 9220

PETER BRADES ARCHITECTS  
www.peterbradesarchitects.co.uk

**PBA**