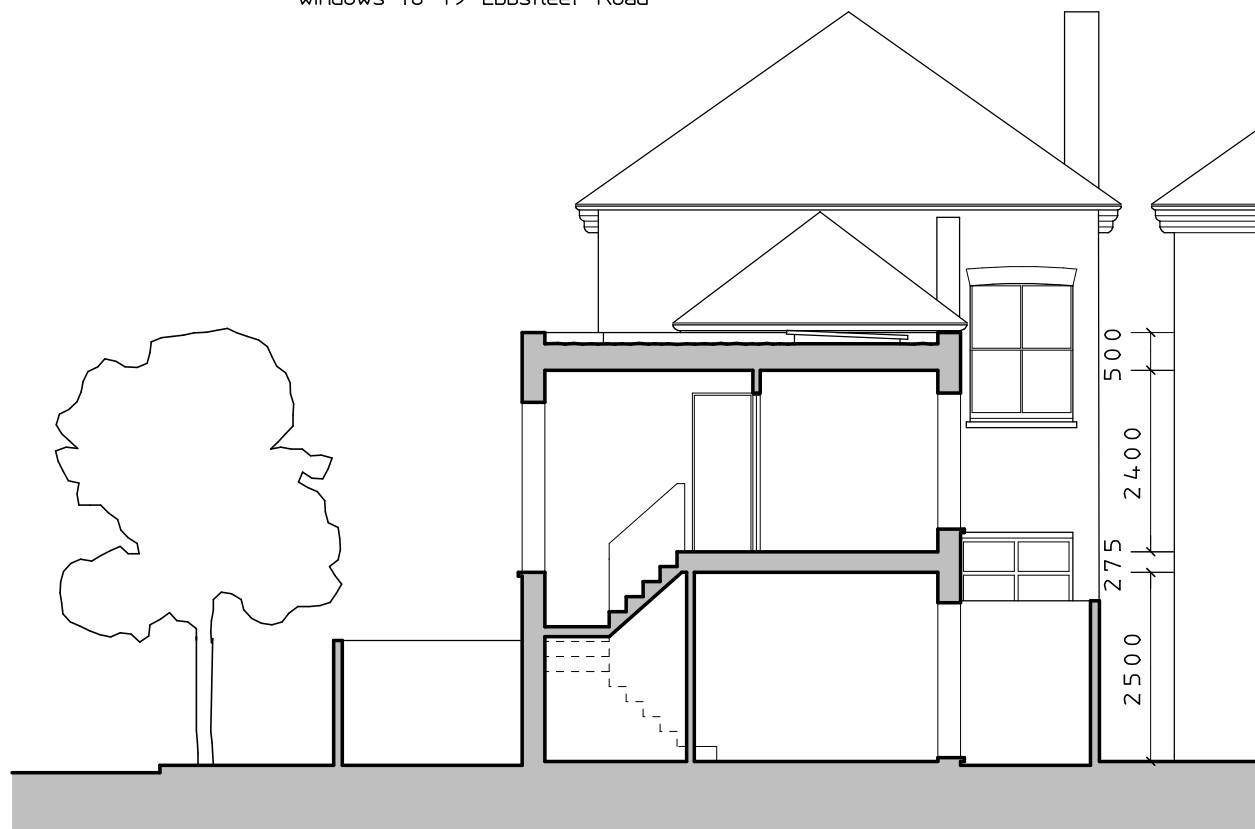
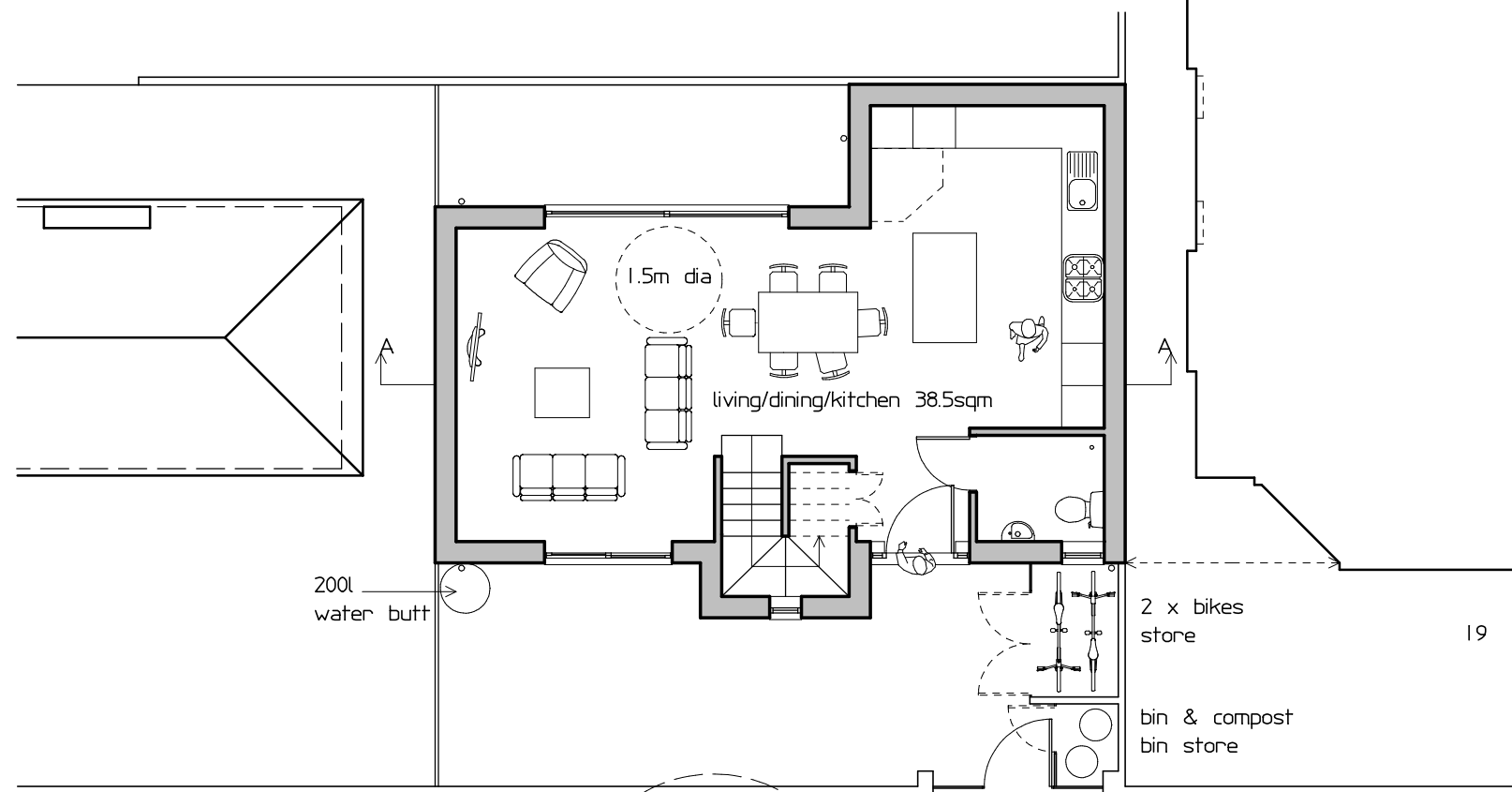
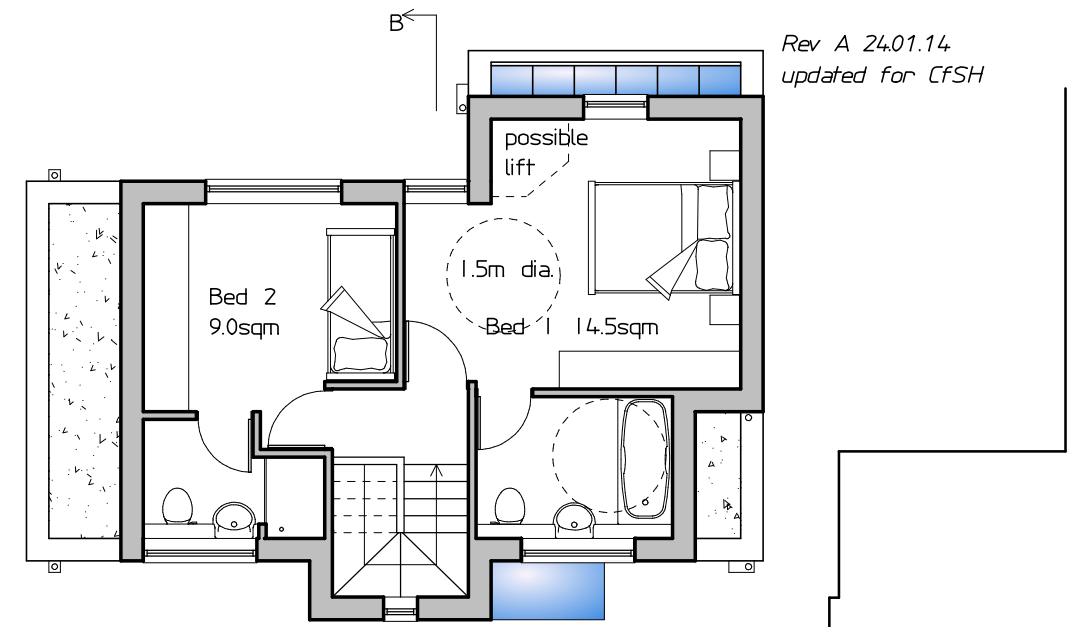


SECTION AA  
with 45° angle from 1st floor  
bedroom window in 194; ground  
floor windows are to bathrooms,  
obscure glazed, as are side  
windows to 19 Ebbsfleet Road



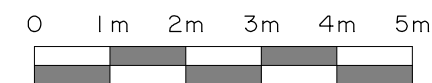
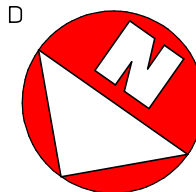
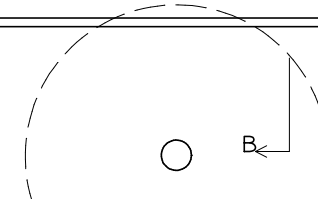
SECTION BB

1st FLOOR PLAN



GROUND FLOOR PLAN

E B B S F L E E T R O A D



PROJECT 194a FORDWYCH ROAD, NW2 3NX

DRAWING PLANS & SECTIONS  
AS PROPOSED

NUMBER 1658/06 Rev

Scale 1/100 42 Colebrooke Row  
London N1 8AF  
Date 11.13 tel 020-7226 3884  
copyright protected fax 020-7226 9220

PETER BRADES ARCHITECTS **PBA**  
www.peterbradesarchitects.co.uk