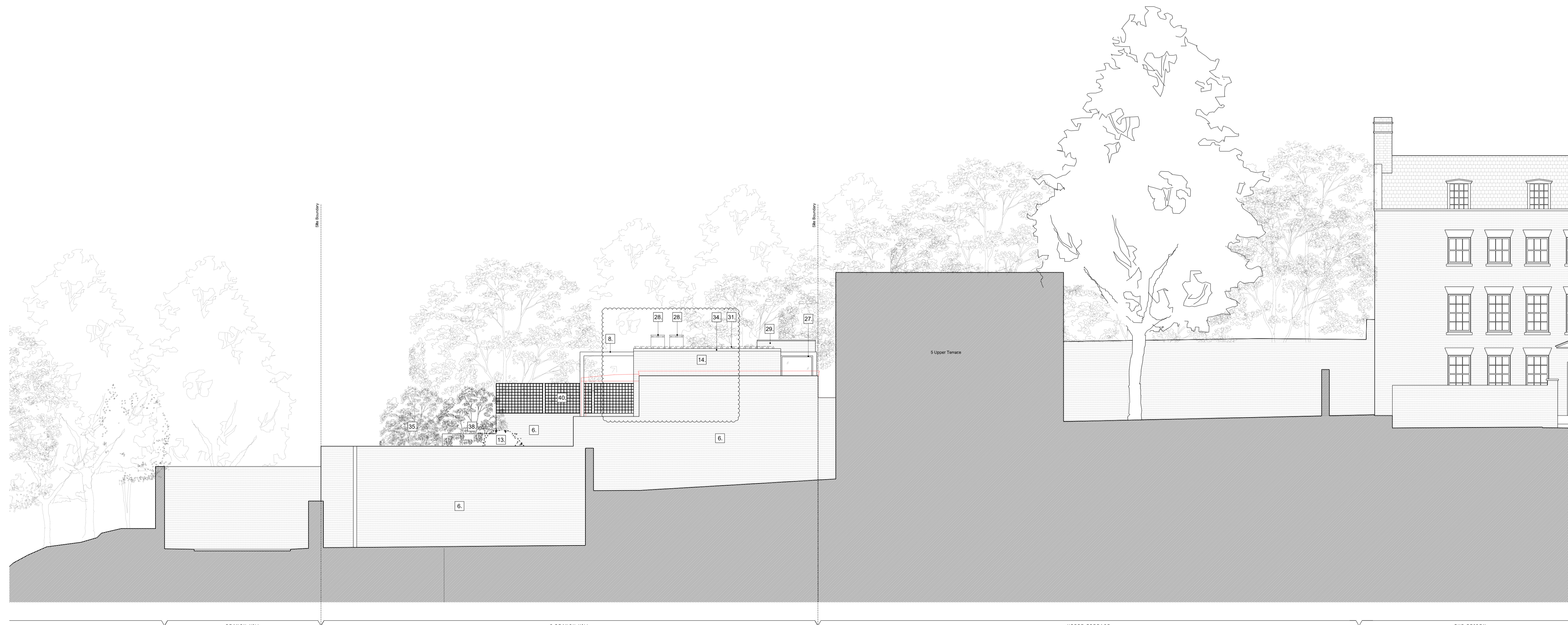


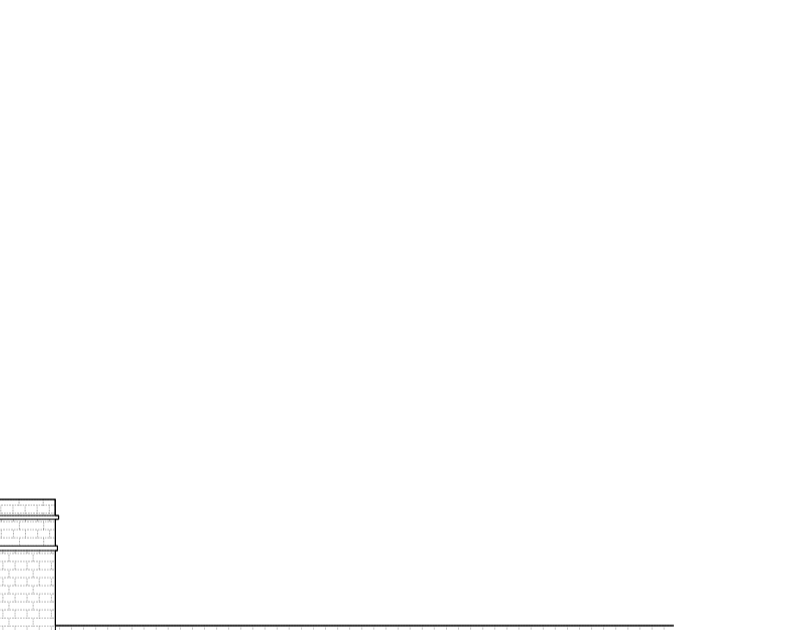
Existing Side Elevation

- Legend: Existing Building**
- Existing London Stock brick wall
  - Existing brick paving
  - Existing steel-framed shade structure
  - Existing timber lattice atop London Stock brick garden wall
  - Existing garage door
  - Existing sliding vehicle gate to Branch Hill
  - Existing aluminium-framed glass sliding doors
  - Existing razor wire atop garden wall
  - Existing upstand of aluminium-framed rooflight

- Key:**
- Existing structure / earth
  - New structure
  - Outline of existing house
- Legend: Proposed Building**
1. New 'Bronze' (Electroplated Aluminium) front door
  2. New 'Bronze' (Electroplated Aluminium) fixed panels
  3. New 'Bronze' (Electroplated Aluminium) sliding gate
  4. New brickwork retaining wall in stock brickwork re-claimed from demolition
  5. 'Bronze' (Electroplated Aluminium) reveals to new opening in garden wall.
  6. Existing London stock brickwork wall retained
  7. 'Bronze' (Electroplated Aluminium) framed double-glazed sliding door system
  8. 'Bronze' (Electroplated Aluminium) frame. Refer drawing P\_09
  9. Flush, floor-mounted 'Bronze' (Electroplated Aluminium) grilles to ventilate basement environment (below)
  10. Air-source heat pump enclosure. Refer to noise specialists documentation
  11. New vehicular crossover. Brick paving to match existing
  12. New Granite Selt paving to drive
  13. Mature specimen Ash in bespoke, raised, cast-stone planter. Refer to P\_06
  14. 'Linear' brick external wall, stagger bond
  15. Raised curb in 'Linear' brickwork
  16. Yew hedging. Refer to P\_06
  17. 'Bronze' (Electroplated Aluminium) double-glazed fixed window system
  18. Deep planting zone (designated by green hatch). Refer to P\_06
  19. Double-glazed glass walkway to ground floor
  20. Flush, double-glazed fixed walk-on rooflight
  21. Lawn. Refer to P\_06
  22. 'Bronze' (anodised aluminium) steel-framed, lightweight balustrade
  23. Yorkstone paving
  24. Yorkstone coping to retaining wall
  25. Pre-fabricated 'Bronze' (Electroplated Aluminium) brise soleil
  26. Balcony: Yorkstone paved, 'Bronze' (Electroplated Aluminium) fascia
  27. 'Bronze' (Electroplated Aluminium) portal frame with flush, fixed, double-glazed, obscured, sand blasted glass mull between frame
  28. 'Bronze' (Electroplated Aluminium) chimney flue
  29. Lift and counter weight, Lift overrun formed in 'linear' brick, with linear brick lid
  30. Fixed, double-glazed flush rooflight with obscured sand blasted glass
  31. Sedum roof, refer to P\_06
  32. Car lift
  33. Car turn-table within basement
  34. Polyester powder-coated coping
  35. Mature specimen Copper Beech within deep planting zone. Refer to P\_06
  36. Anodised aluminium feature spandrel panel
  37. 'Bronze' (Electroplated Aluminium) framed double-glazed tilt-turn window system
  38. Mature specimen Birch, within deep planting zone. Refer to P\_06
  39. Operable, double-glazed flush rooflight
  40. Proposed timber lattice atop London Stock brick garden wall
  41. Glazed access hatch
  42. Fixed, double-glazed flush rooflight with obscured privacy film below



Proposed Side Elevation



Rev B	17/10/2013	Issued for Planning Revisions bubbled
Rev A	07/06/2013	Issued for Planning

## PLANNING ISSUE

Project No.	12021
Client	Cheryl Plaza
Date	June 2013
Scale	1:50@A00, 1:100@A1
Project	Judges Lodge, Branch Hill
Drawing Title:	Existing & Proposed Side Elevation II
Drawing No.	P_13
Drawn	LH
Approved	MW
Signed	

**Marek Wojciechowski Architects**

28 Margaret Street W1W 8RZ T. 020 7580 8336 www.mw-a.co.uk

Copyright Marek Wojciechowski Architects Limited.  
 No implied license exists. This drawing should not be used to calculate areas for the purposes of valuation. All dimensions to be checked on site by the contractor and such dimensions to be their responsibility. Do not scale drawings. All work must comply with relevant British Standards and Building Regulations requirements. Drawing errors and omissions to be reported to the architect.

