

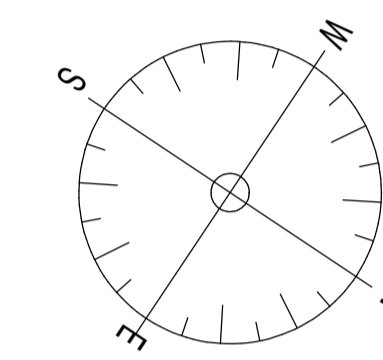
NOTES

Key:
 |E| 300mm dimension of leading edge to doors
 Internal dimensions of passenger lift is 1000 x 1200 allowing wheelchair access forward and reverse with lift controls to be between 900mm and 1200mm from the floor and 400mm from the lift's internal front wall

Illuminated entrances to all flats with level access over thresholds

All bathroom and toilet doors shown with facility to open outwards

Drainage provision for future showers to be provided in all dwellings with baths



C	3/9/07	Bathrooms/Shower rooms amended to meet Part M Staircase reconfigured with 170mm risers, and handrail height shown 900mm above nosings and extending 300mm beyond top and bottom steps Dimensions and notes added to meet Lifetime Homes standards
B	7/6/07	FLAT C MINOR ALTERATIONS FLAT H RENAMED AS F FLAT F RENAMED AS C WINDOWS TO SIDE ELEVATION ADDED
A	22/2/07	FLAT I REMOVED, FLATS G & H ENLARGED STAIRCASE RECONFIGURED FLAT D MODIFIED TO INCLUDE CYCLE HOOK CYCLE HOOK HANGING SHOWN

Rev	Date	Description
-----	------	-------------

REVISIONS

Betham Associates Architects
 105-111 Euston Street London NW1 2EW
 tel/fax 020 7387 0451 Email:betham@hotmail.com

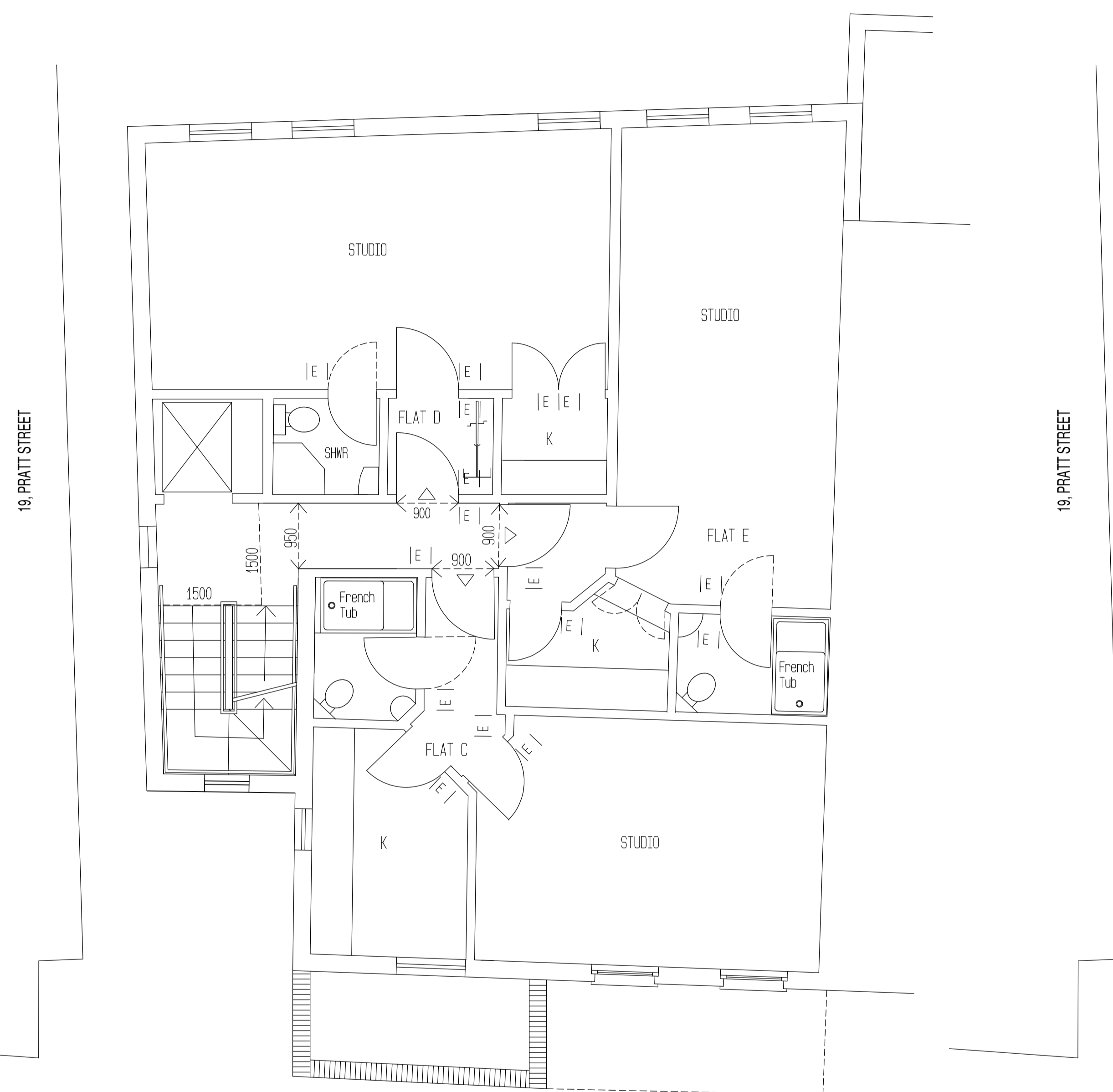
**81 BAYHAM STREET
 CAMDEN TOWN
 LONDON NW1 0AG**

Date: 3/9/07

Scale: 1:50 (A1), 1:100 (A3)

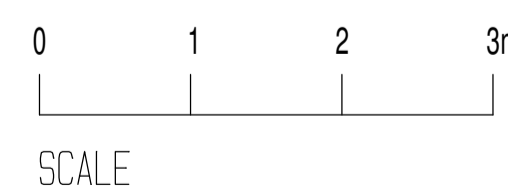
Job No. 0507

Dwg No. 06/C

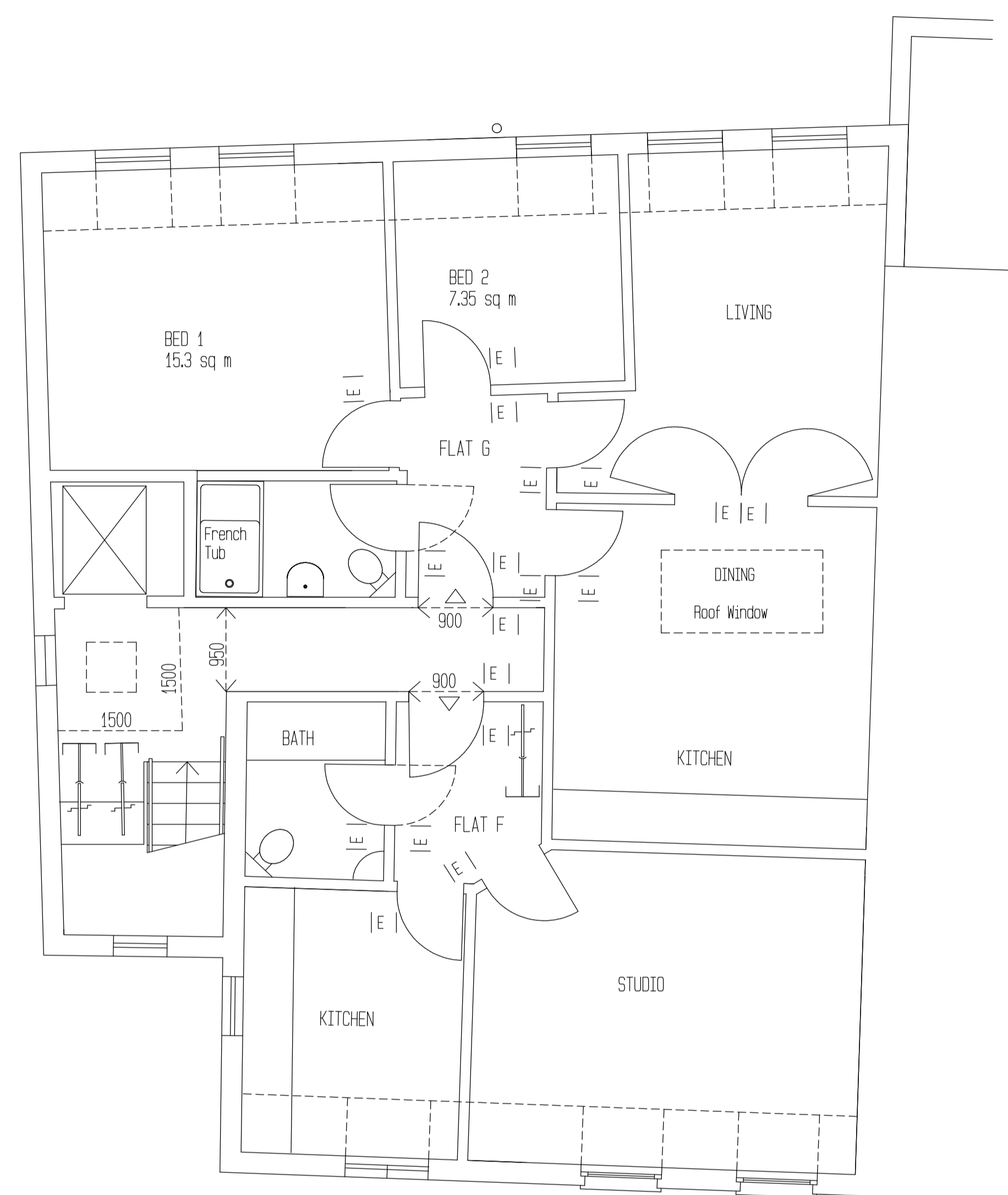


FLAT D AREA 32.04sq m
 FLAT E AREA 32.02sq m
 FLAT F AREA 32.00sq m

SECOND FLOOR PROPOSED



SCALE



FLAT G (2 BEDROOM) AREA - 61.39sq m
 FLAT H (STUDIO) AREA - 34.08sq m

THIRD FLOOR PROPOSED