

NOTES

Key:

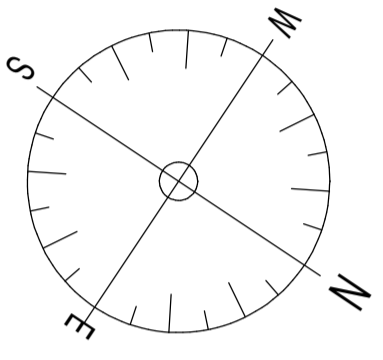
|E| 300mm dimension of leading edge to doors

Internal dimensions of passenger lift is 1000 x 1200 allowing wheelchair access forward and reverse with lift controls to be between 900mm and 1200mm from the floor and 400mm from the lift's internal front wall

Illuminated entrances to all flats with level access over thresholds

All bathroom and toilet doors shown with facility to open outwards

Drainage provision for future showers to be provided in all dwellings with baths



C	3/9/07	Bathrooms/Shower rooms amended to meet Part M Staircase reconfigured with 170mm risers, and handrail height shown 900mm above nosings and extending 300mm beyond top and bottom steps Dimensions and notes added to meet Lifetime Homes standards
B	7/06/07	2 no. 1 bedroom flats (2 person) to replace 3 no. studio flats on 1st floor
A	22/2/07	Staircase reconfigured to side elevation Refuse/recycling store increased for flats floor over refuse Exg refuse bins for restaurant reinstated and enlarged Flat A modified to include cycle hook

Rev	Date	Description
-----	------	-------------

REVISIONS

Betham Associates Architects
105-111 Euston Street, London NW1 2EW
tel/fax 020 7387 0451
Email:betham@hotmail.com

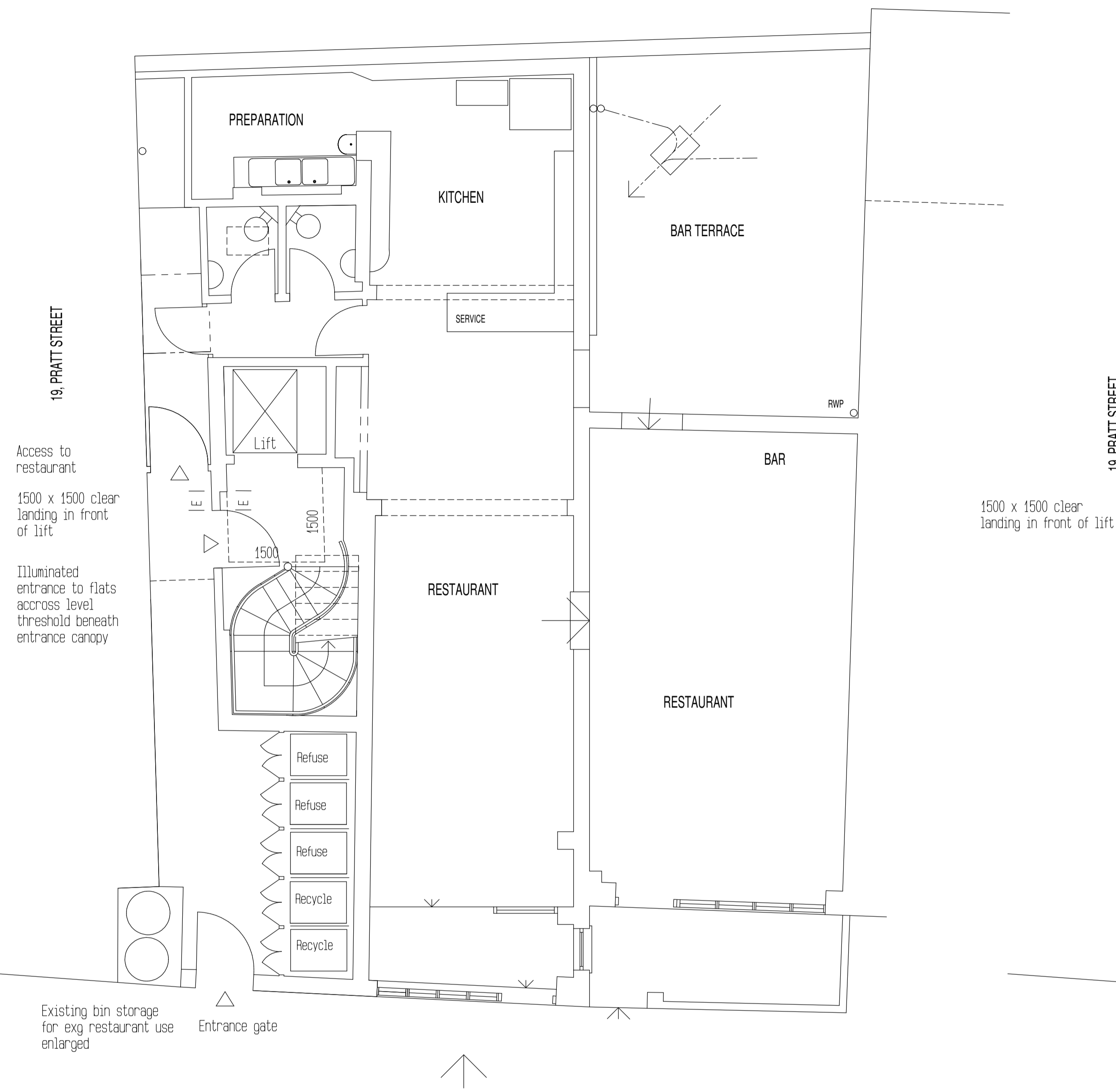
81 BAYHAM STREET
CAMDEN TOWN
LONDON NW1 0AG

Date: 3/9/07

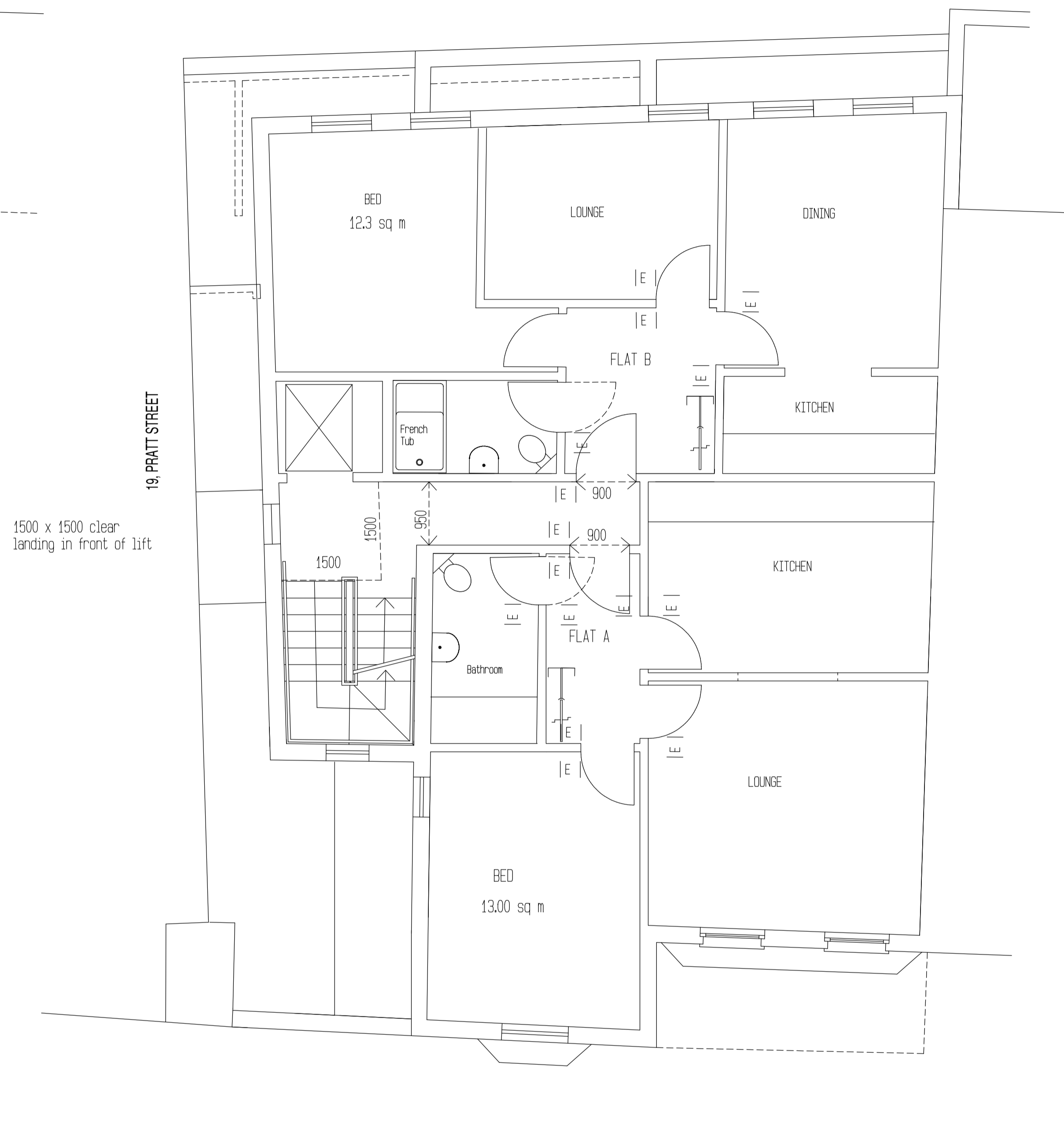
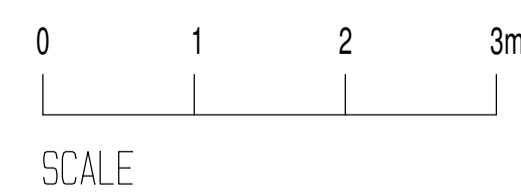
Scale: 1:50 (A1), 1:100 (A3)

Job No. 0507

Dwg No. 05/C



PROPOSED GROUND FLOOR PLAN



PROPOSED FIRST FLOOR PLAN