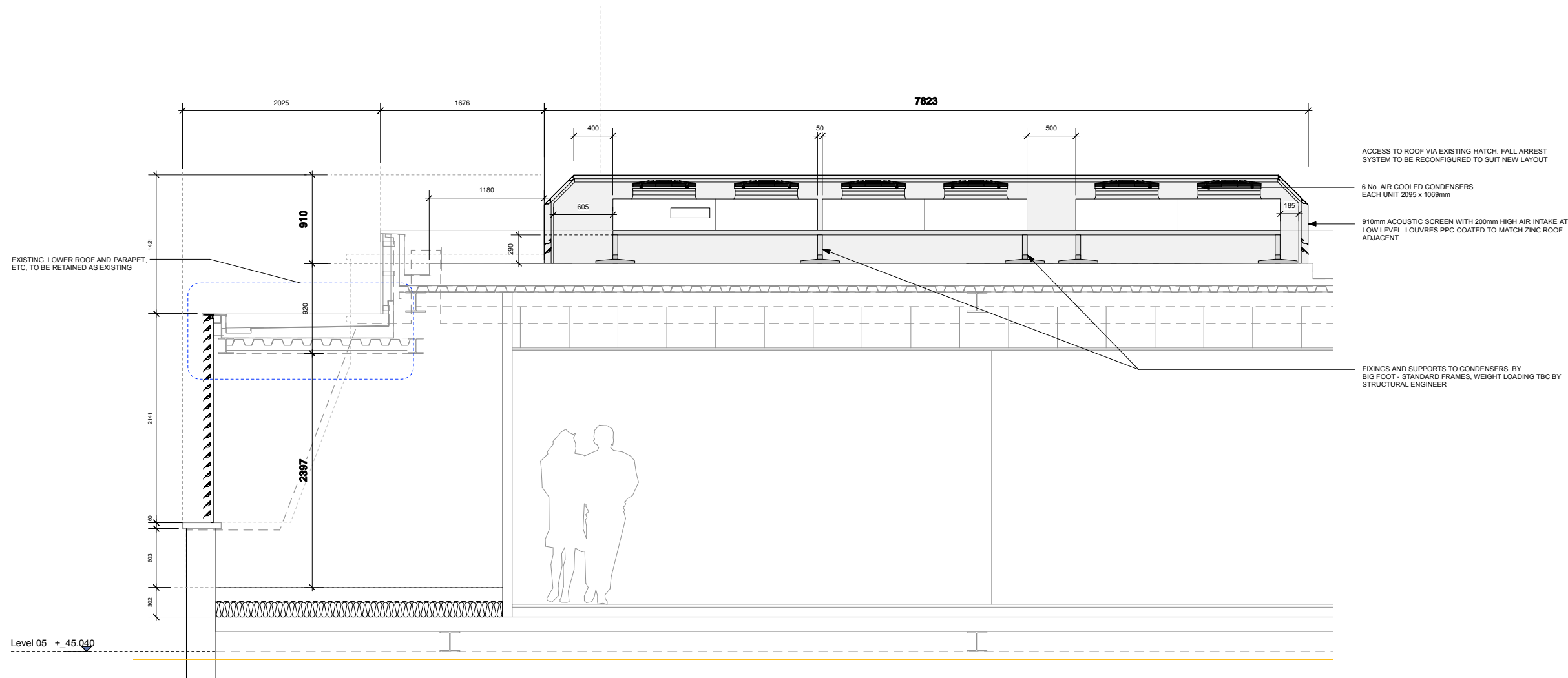


1 WINDMILL STREET 5TH FLOOR & ROOF ELEVATION - EAST
SCALE 1: NTS



2 WINDMILL STREET 5FL. & EAST ROOF SECTION
SCALE 1:25

Disclaimer:

This drawing is the property of Hosker Moore Kent Meila Limited. Copyright is reserved by them and the drawing is issued on the condition that it is not copied, reproduced or disclosed to any unauthorised person, wholly or in part, without the written consent of Hosker Moore Kent Meila Limited. Do not scale from this drawing. All dimensions to be verified prior to manufacture and construction. Any discrepancies to be reported immediately.

FOR PLANNING

NOTES:
DRAWING BASED UPON SKETCH DETAILS
ISSUED BY EEP 19.11.13:
3279/CP1
3279/CP2

BASEBUILD DRAWINGS HAVE BEEN PREPARED
USING ORMS DRAWINGS:
1959 GA 00-07
1959 GE 01-04
1959 GS 01-04

Approx. loading of enclosure: 1200kg
Approx. loading of condensers & pipework: 891kg

TOTAL ADDITIONAL LOAD: APPROX. 2100 kg

Caice/EEP 21.11.2013

Rev	Date	Description	Code
C	31.01.2014	Issued for Planning	C
B	21.01.2014	Issued for Construction	C
A	27.11.2013	Annotation Updated	P
	22.11.2013	For Turkey Associates review	P

Revisions: Issue Codes: P = Preliminary, T = Tender, C = Construction

HMKM

14-16 Great Pultney Street
London W1F 9ND
T: +44 (0) 20 7494 4949
F: +44 (0) 20 7494 4950
W: www.hmk.com

Client:
The Mill

Project:
Windmill Street, London

Project ref No:
MF/619

Dwg Title:
East Elevation & Section - 5F/Roof Plant Room
Option One

Dwg No:
280

Dwg Series:
General Arrangement Series

Dwg Series:
200

Scale: 1:25 @ A1
Drawn By: SW
Checked By: PM
Date: 22.11.2013
Revision: C

©HMKM 2014 All rights reserved