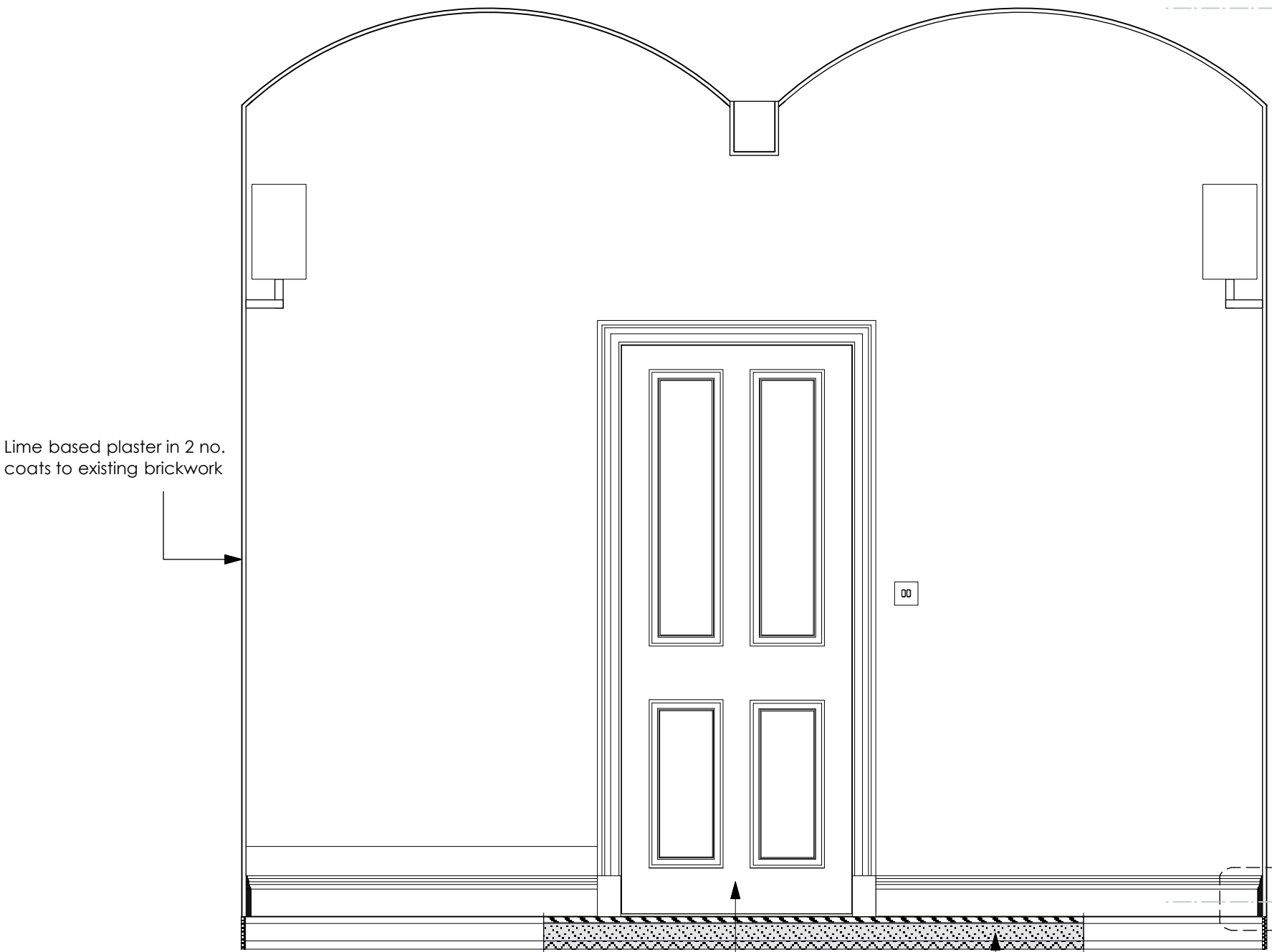
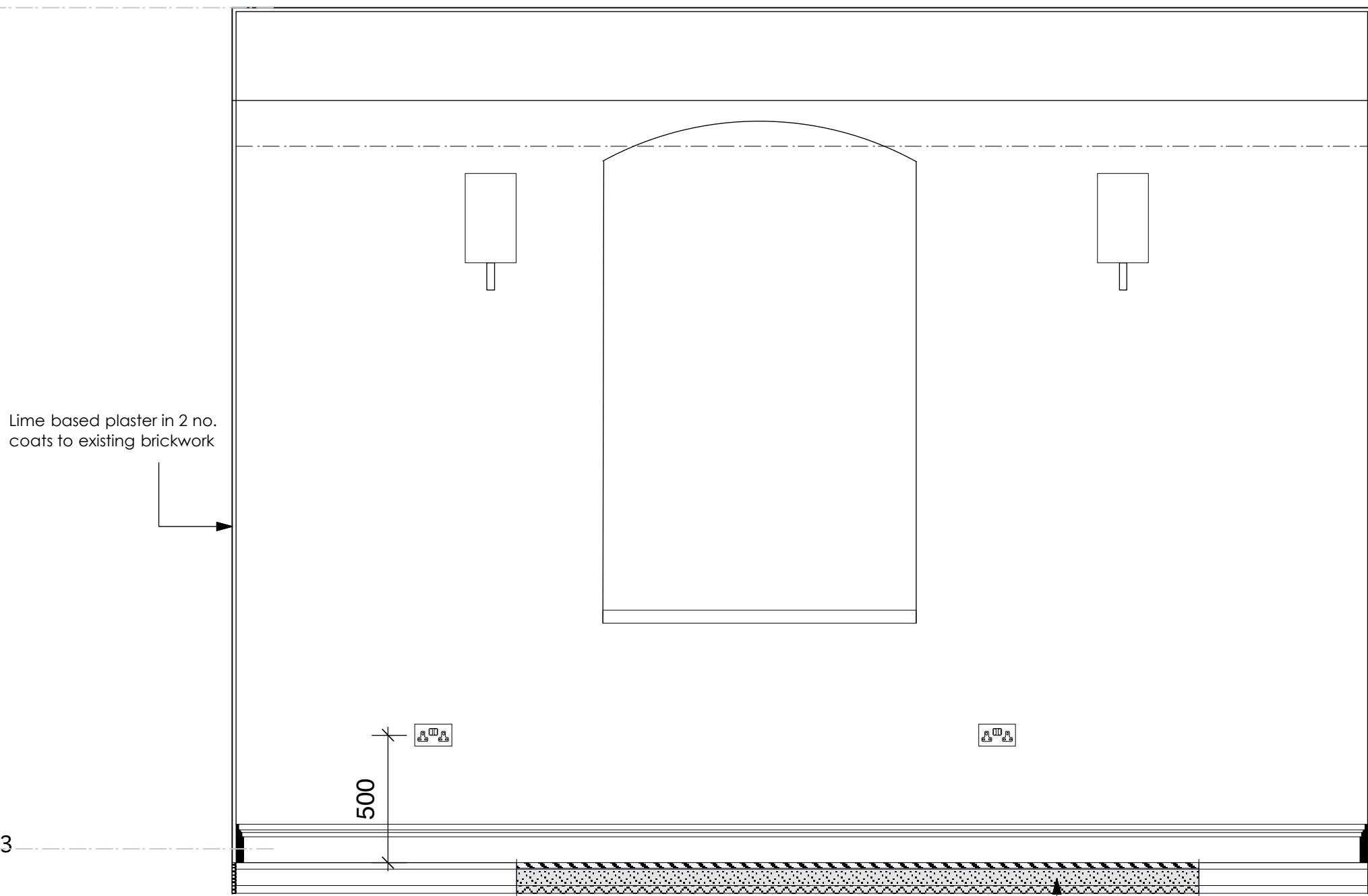


PLAN
Scale 1:20



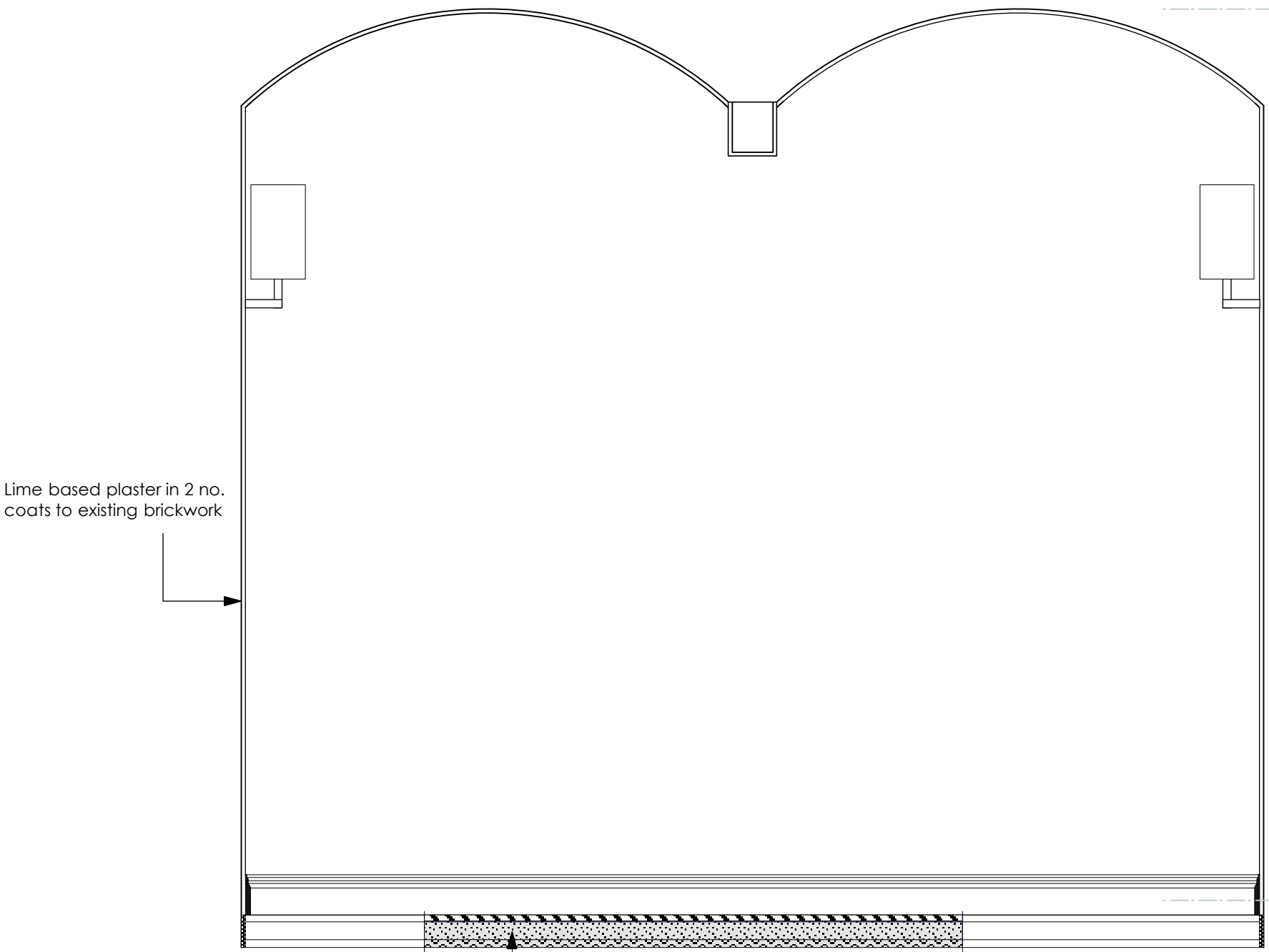
ELEVATION 1
Scale 1:20

Make up of floor: 22mm solid HW floor-boards 150mm wide fixed with liquid nails on Ditra matting on min. 65mm screen on min. 30mm rigid insulation; allow additional screed to line FFL with stone floor adjacent; no heating required



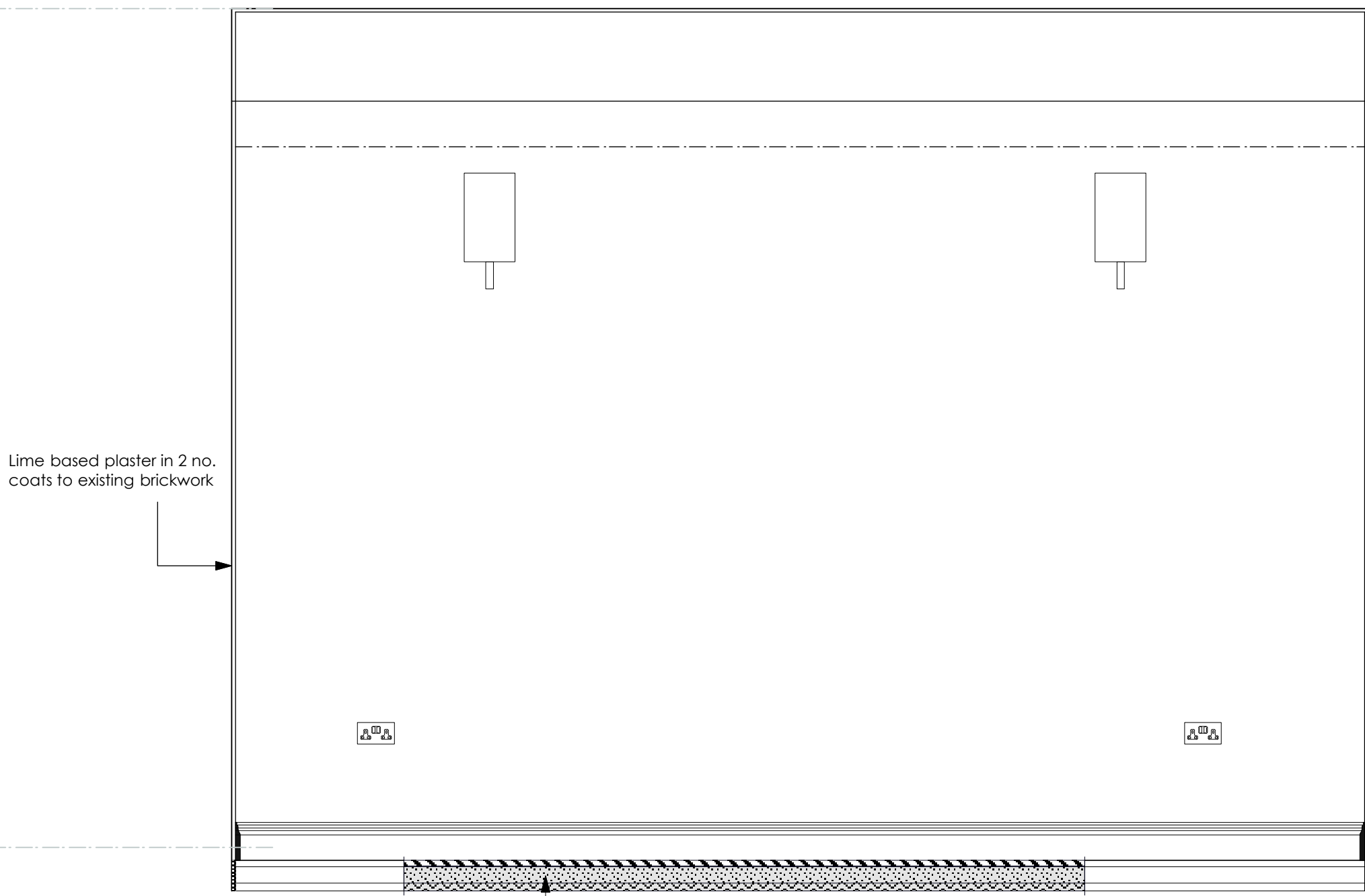
ELEVATION 1
Scale 1:20

Make up of floor: 22mm solid HW floor-boards 150mm wide fixed with liquid nails on Ditra matting on min. 65mm screen on min. 30mm rigid insulation; allow additional screed to line FFL with stone floor adjacent; no heating required



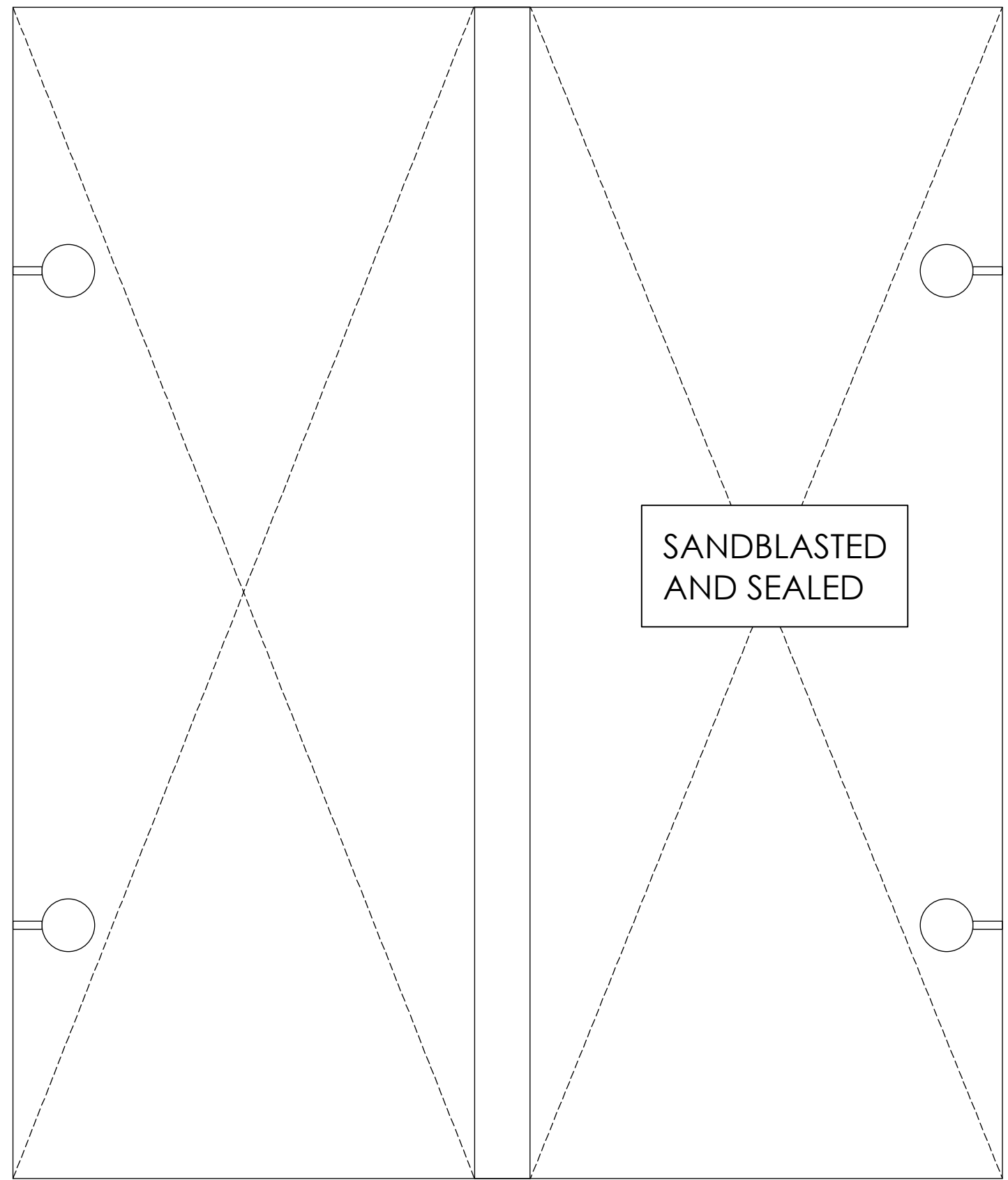
ELEVATION 3
Scale 1:20

Make up of floor: 22mm solid HW floor-boards 150mm wide fixed with liquid nails on Ditra matting on min. 65mm screen on min. 30mm rigid insulation; allow additional screed to line FFL with stone floor adjacent; no heating required

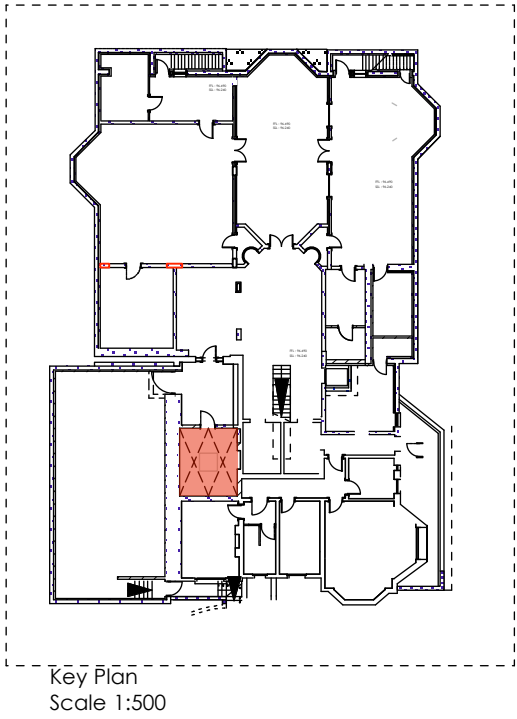


ELEVATION 4
Scale 1:20

Make up of floor: 22mm solid HW floor-boards 150mm wide fixed with liquid nails on Ditra matting on min. 65mm screen on min. 30mm rigid insulation; allow additional screed to line FFL with stone floor adjacent; no heating required



REFLECTIVE CEILING PLAN
Scale 1:20



Key Plan
Scale 1:500

NOTE: For full details of all pipe runs, drainage runs, cable management and mechanical ventilation refer to mechanical and electrical sub-contractors drawings

Rev A: August 2013 - Planning and Listed Bldg Consent Submission

Rev B: August 2013 - Electrics amended

Rev C: January 2014 - Revised Planning and Listed Bldg Consent Submission

REVISED PLANNING & LISTED BLDG CONSENT SUBMISSION

AP (a.) alan power (ARCHITECTS.) <small>13, Northam Road, London, W11 2BP Tel: 020 7229 9375 Fax: 020 7221 4172</small>	DRAWING ROOM RB14 : WINE CELLAR PLANS & ELEVATIONS	DRWG. N°: 492/RB14
	PROJECT THE ELMS, FITZROY PARK, N6 6HS	Rev. C
	CLIENT ELM INTERNATIONAL Ltd.	Date DEC 2012
		Drawn

DO NOT SCALE FROM THIS DRAWING. ALL DIMENSIONS TO BE CHECKED ON SITE AND DISCREPANCIES REPORTED TO ARCHITECT

A1 1:50@ A1
1:100 @ A3