

VIEW 1

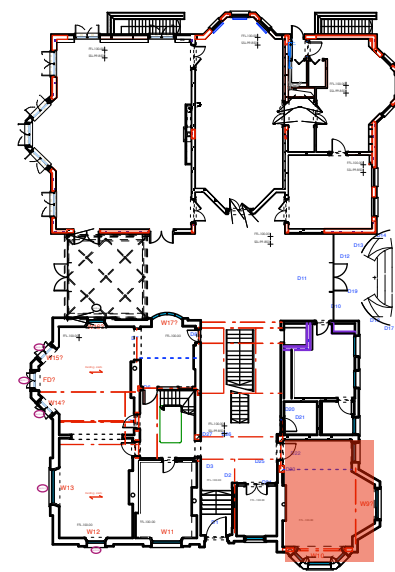
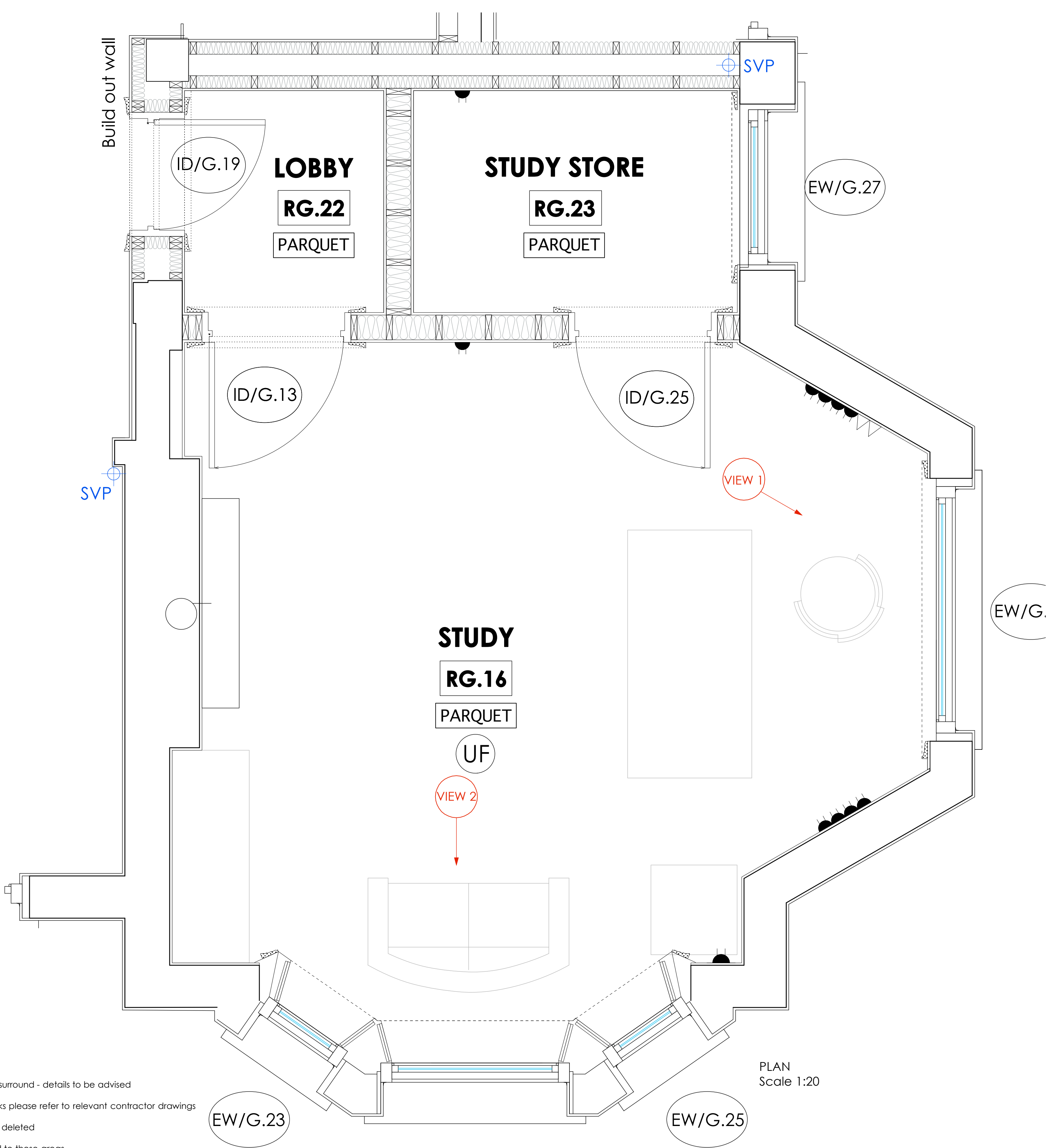


VIEW 2

NOTES - RG.16

- 1 New or salvaged timber fire surround - details to be advised
- 2 For all services and M&E works please refer to relevant contractor drawings
- 3 All mechanical ducting now deleted
- 4 Underfloor heating proposed to these areas
- 5 Power and IT points shown indicatively to reflect design intent
- 6 Light fitting shown as indicative spec T.B.C.
- 7 Light switch positions indicative. Specifications T.B.C.
- 8 Ceiling heights shown are indicative. Dimensions to be checked on site by the contractor
- 9 Wall mounted TV propsoed in this position. Height and specification of bracket T.B.C.
- 10 Ironmongery specification T.B.C.

Reinstate original surrounds where possible. A detailed survey will be required around the installed windows in relation to structural openings



KEY PLAN
Scale 1:500

NOTE: For full details of all pipe runs, drainage runs, cable management and mechanical ventilation refer to mechanical and electrical sub-contractors drawings

Rev A: August 2013 - Planning and Listed Bldg Consent Submission
Rev B: August 2013 - Electrics amended
Rev C: January 2014 - Revised Planning and Listed Bldg Consent Submission

REVISED PLANNING & LISTED BLDG CONSENT SUBMISSION

AP (a.) alan power (ARCHITECTS.) <small>Alan Power Architects Ltd 13 Northam Road London, W11 2BP Tel: 020 7229 9375 Fax: 020 7221 4172</small>	DRAWING ROOM RG.16: STUDY SHEET 1	DRWG. N°. 492/RG.16-1
	PROJECT THE ELMS FITZROY PARK, N6 6HS	Rev. C
	CLIENT ELM INTERNATIONAL LTD.	Scale
		Date Dec 2012 Drawn

DO NOT SCALE FROM THIS DRAWING. ALL DIMENSIONS TO BE CHECKED ON SITE AND DISCREPANCIES REPORTED TO ARCHITECT

A1 1:50@ A1
1:100 @ A3