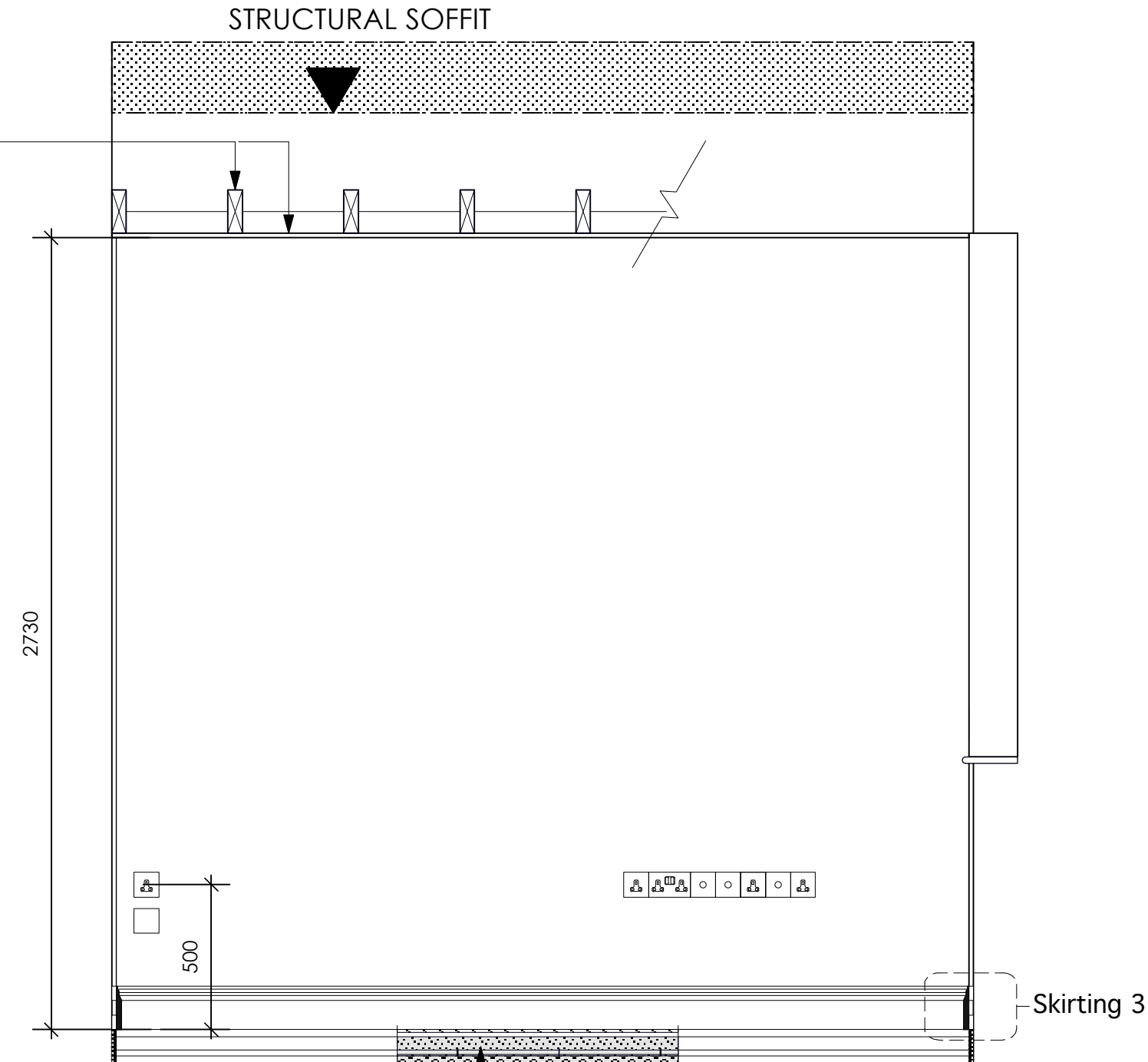


PLAN
Scale 1:20

New suspended ceiling: 50mm x 150mm tanal. sw joists at approx. 375mm c/c clad in 12.5mm PB and skim

SVP from GF run at HL in basement ceiling void to connect to SVP in corner of RB.8

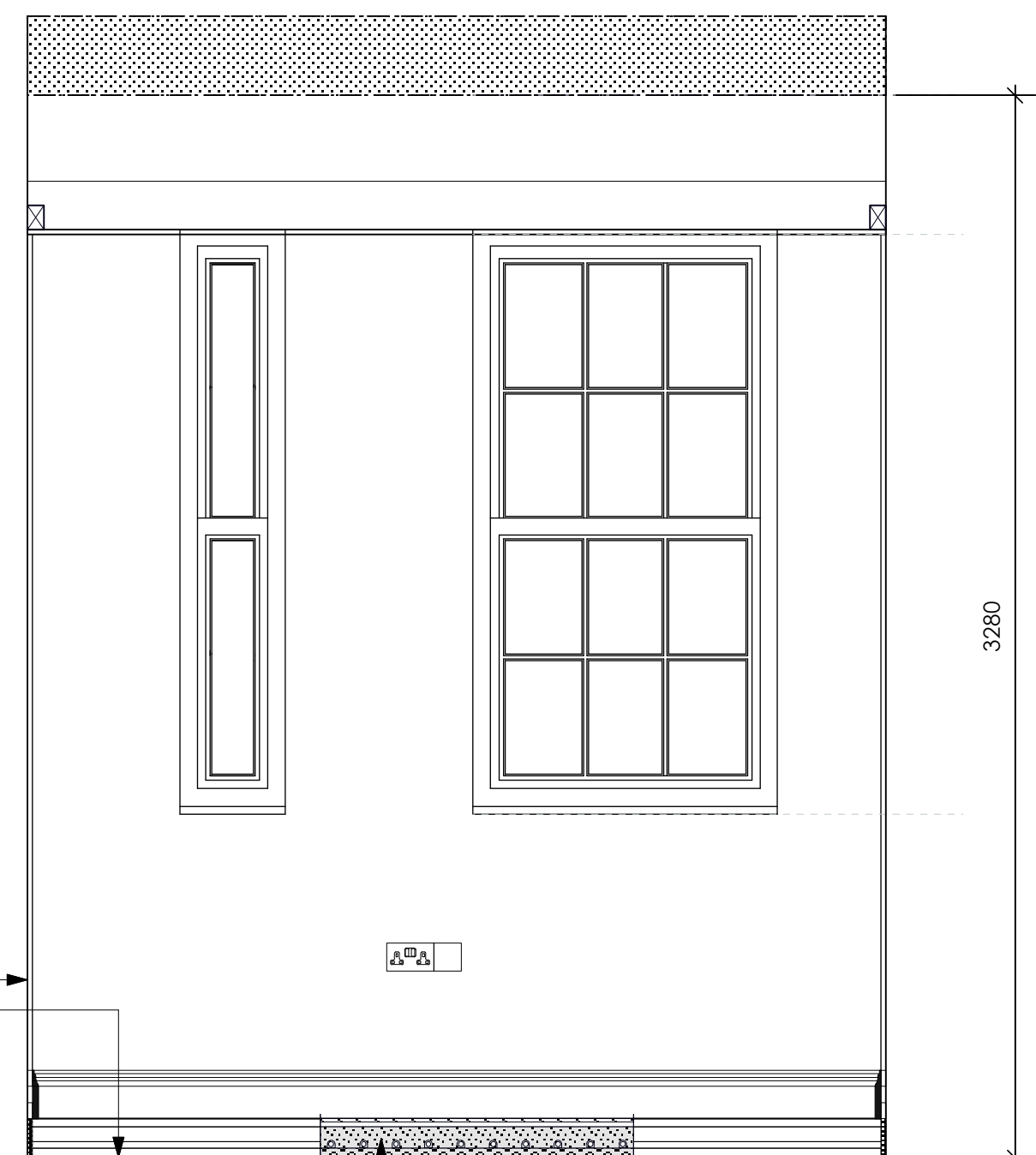
SVP from GF run at HL in basement ceiling void to connect to SVP in corner of RB.8



ELEVATION 1
Scale 1:20

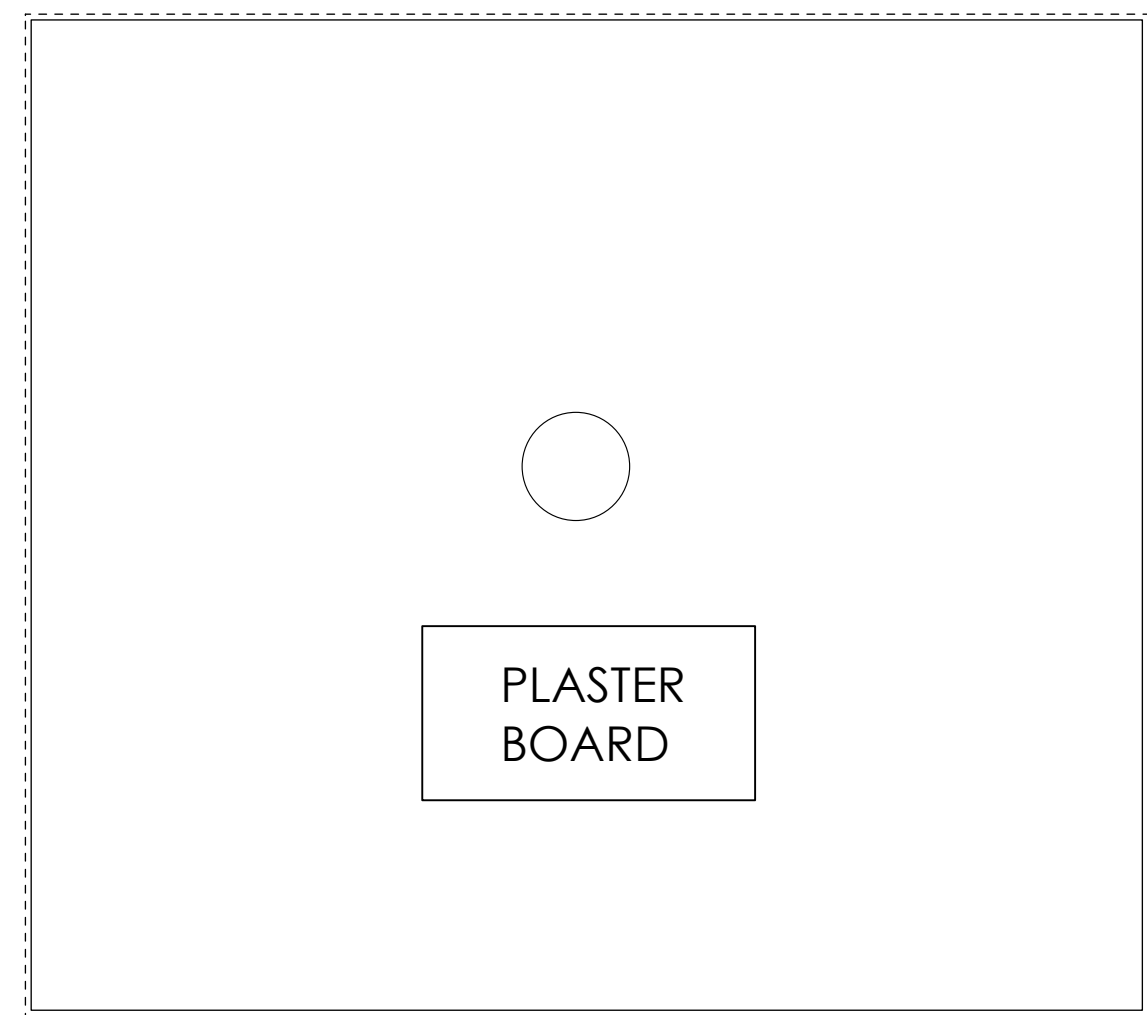
Make up of floor: 300mm x 300mm x 10mm ceramic tiles on Ditra matting on min. 65mm screen on min. 30mm rigid insulation; allow additional screed to line FFL with stone floor adjacent; underfloor heating pipes incorporated within screen

NOTE: Protect integrity of extg tanking to both floor and all solid walls throughout; do not perforate at any point. Allow surface mounting to tanking for electrical cables and overlay with new lime based plaster and skim.

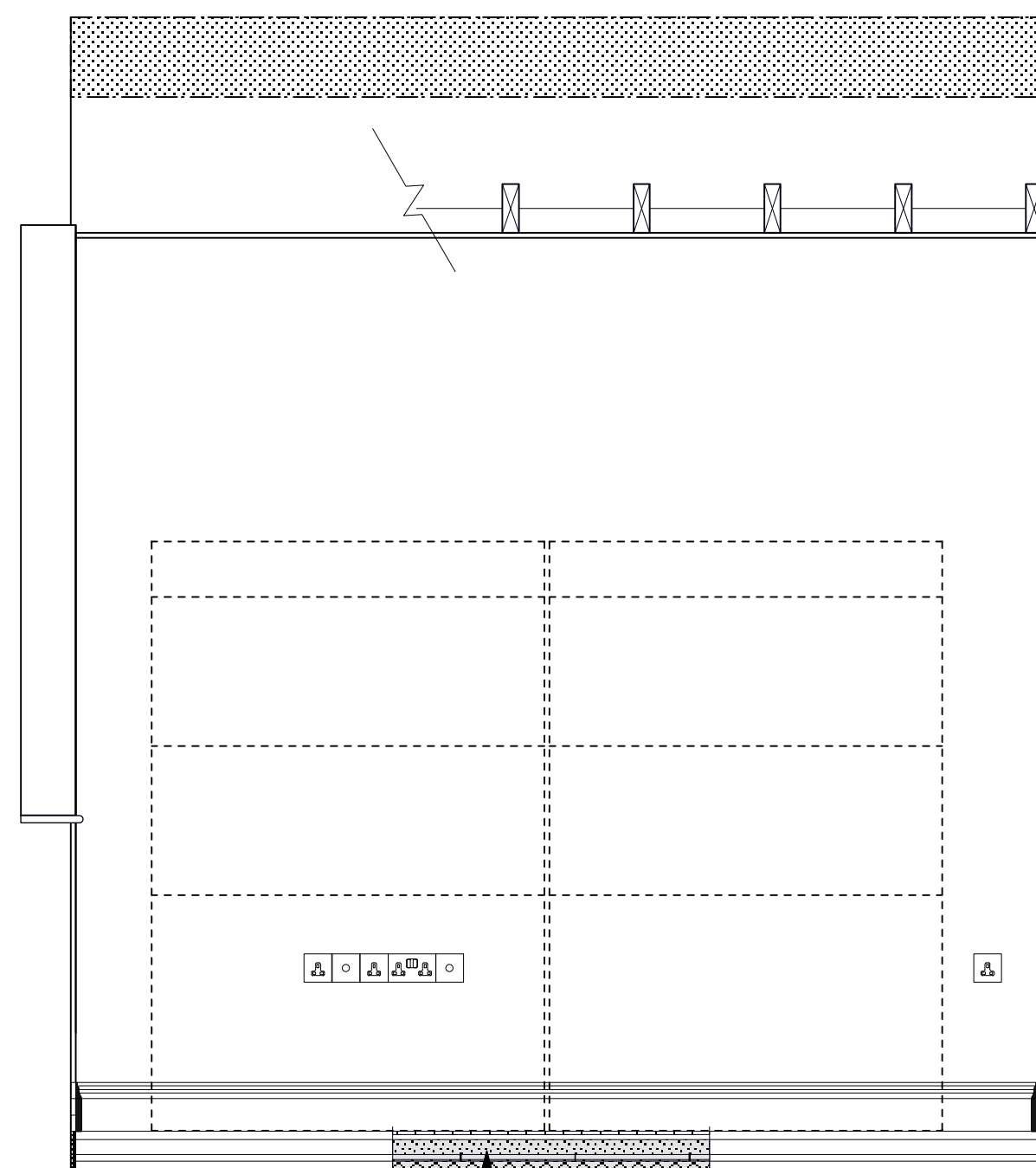


ELEVATION 2
Scale 1:20

Make up of floor: 300mm x 300mm x 10mm ceramic tiles on Ditra matting on min. 65mm screen on min. 30mm rigid insulation; allow additional screed to line FFL with stone floor adjacent; underfloor heating pipes incorporated within screen



REFLECTIVE CEILING PLAN
Scale 1:20

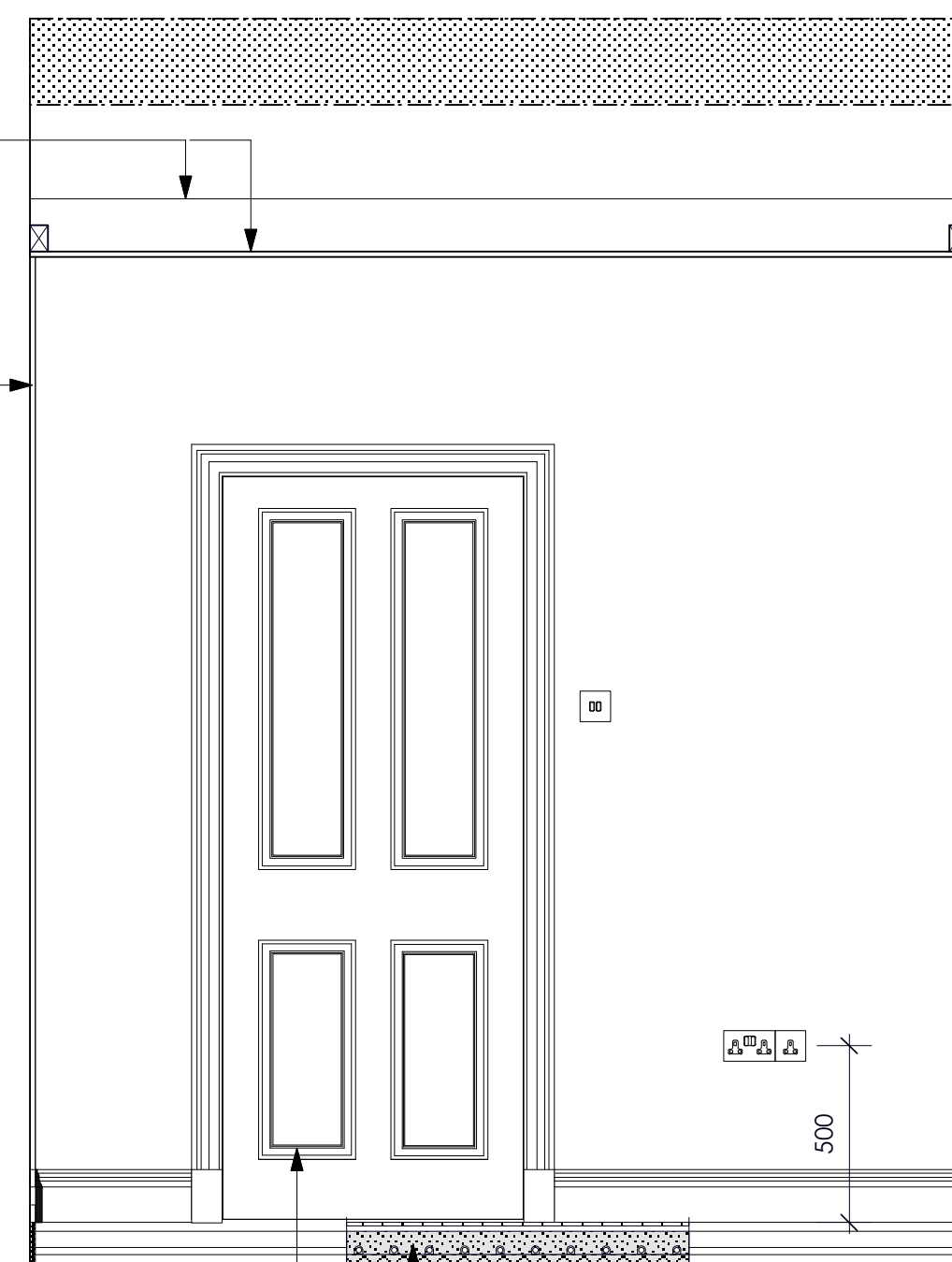


ELEVATION 3
Scale 1:20

Make up of floor: 300mm x 300mm x 10mm ceramic tiles on Ditra matting on min. 65mm screen on min. 30mm rigid insulation; allow additional screed to line FFL with stone floor adjacent; underfloor heating pipes incorporated within screen

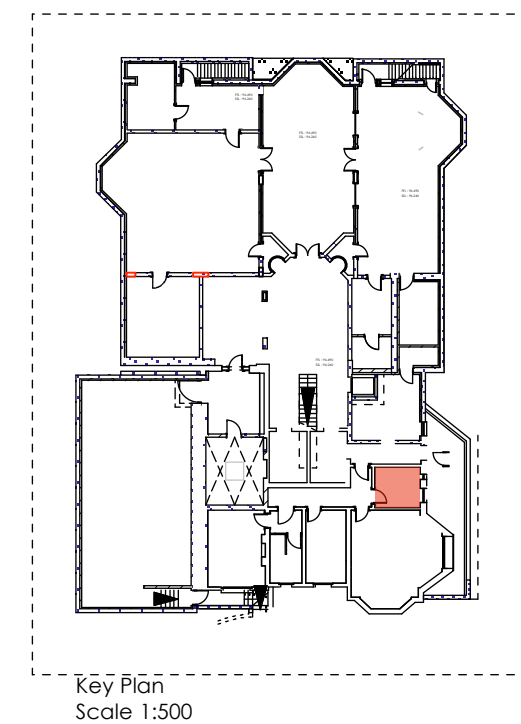
New suspended ceiling: 50mm x 150mm tanal. sw joists at approx. 375mm c/c clad in 12.5mm PB and skim

Lime based plaster in 2 no. coats to all walls throughout



ELEVATION 4
Scale 1:20

Make up of floor: 300mm x 300mm x 10mm ceramic tiles on Ditra matting on min. 65mm screen on min. 30mm rigid insulation; allow additional screed to line FFL with stone floor adjacent; underfloor heating pipes incorporated within screen



NOTE: For full details of all pipe runs, drainage runs, cable management and mechanical ventilation refer to mechanical and electrical sub-contractors drawings

Rev A: August 2013 - Planning and Listed Bldg Consent Submission

Rev B: August 2013 - Electrics amended

Rev C: January 2014 - Revised Planning and Listed Bldg Consent Submission

REVISED PLANNING & LISTED BLDG CONSENT SUBMISSION

| | | |
|---|---|-------------------------|
| AP (a.) alan power (ARCHITECTS.) <small>13, Newham Road, London, W11 2BP Tel: 020 7229 9375 Fax: 020 7221 4172</small> | DRAWING ROOM RB 8: SECURITY ROOM PLANS & ELEVATIONS | DRWG. N° 492/RB8 |
| | PROJECT THE ELMS, FITZROY PARK, N6 6HS | Rev. C |
| | CLIENT ELM INTERNATIONAL Ltd. | Date Dec 2012 |
| | | Drawn |

DO NOT SCALE FROM THIS DRAWING. ALL DIMENSIONS TO BE CHECKED ON SITE AND DISCREPANCIES REPORTED TO ARCHITECT

A1 1:50@ A1
1:100 @ A3