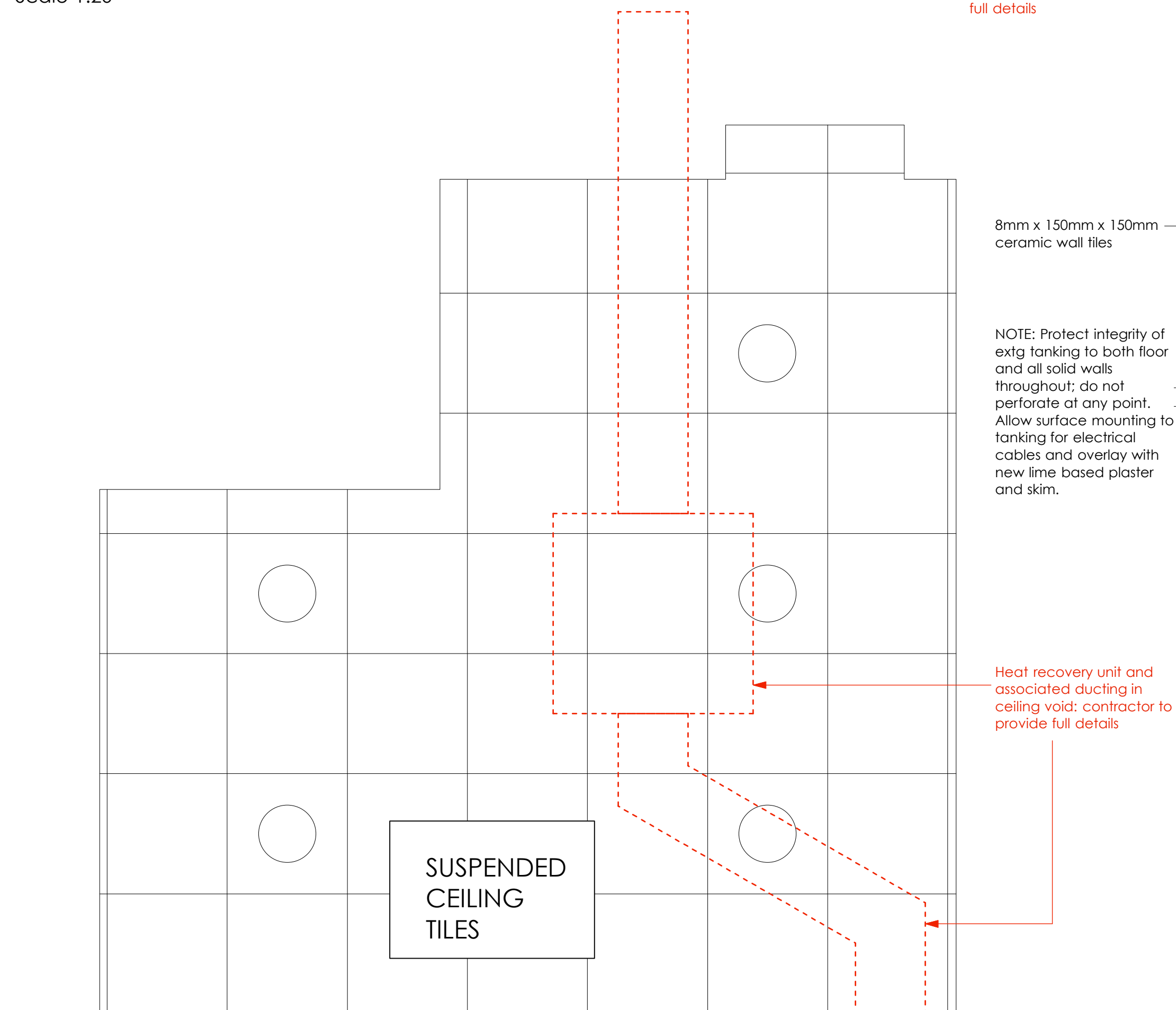
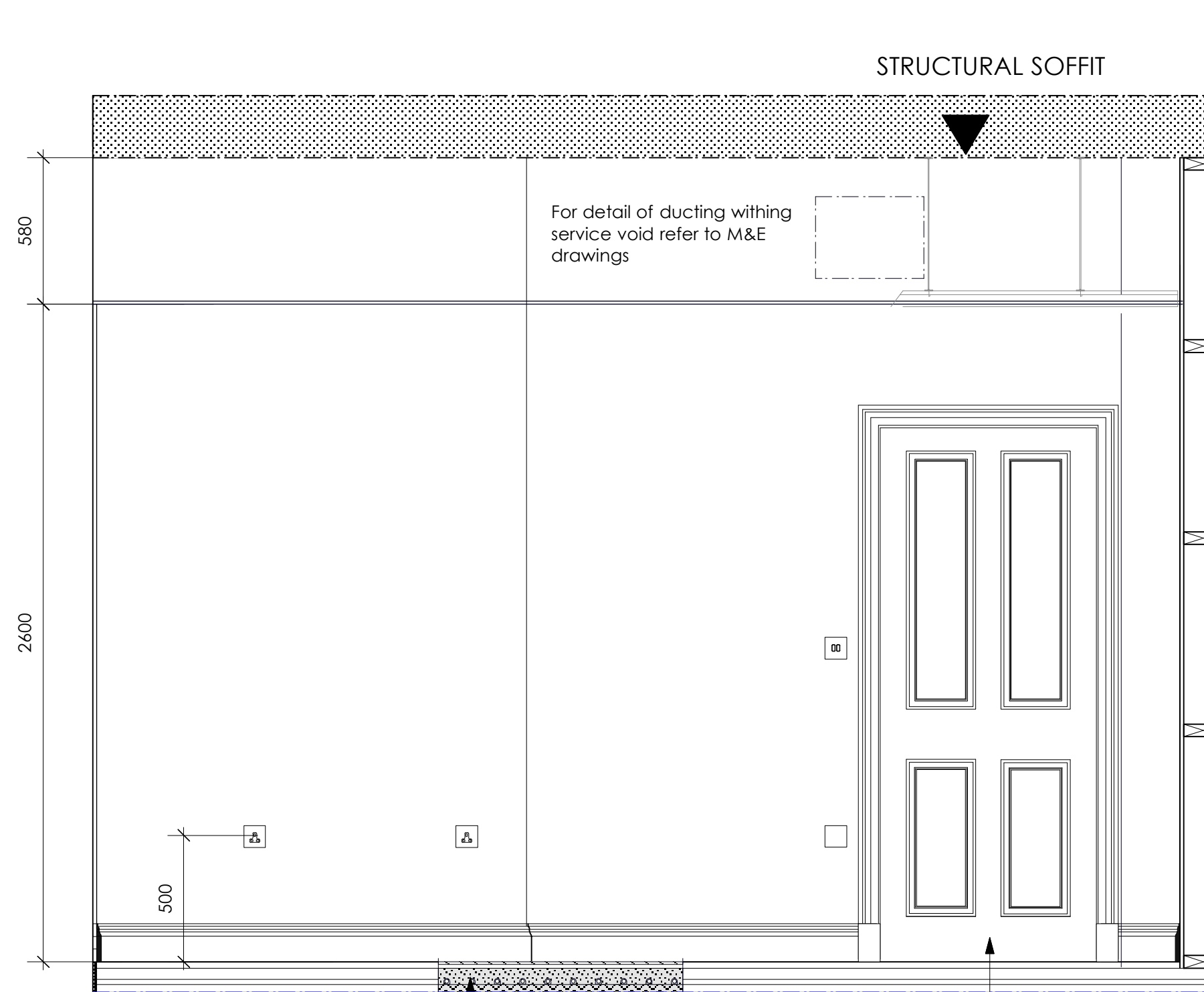


PLAN  
Scale 1:20

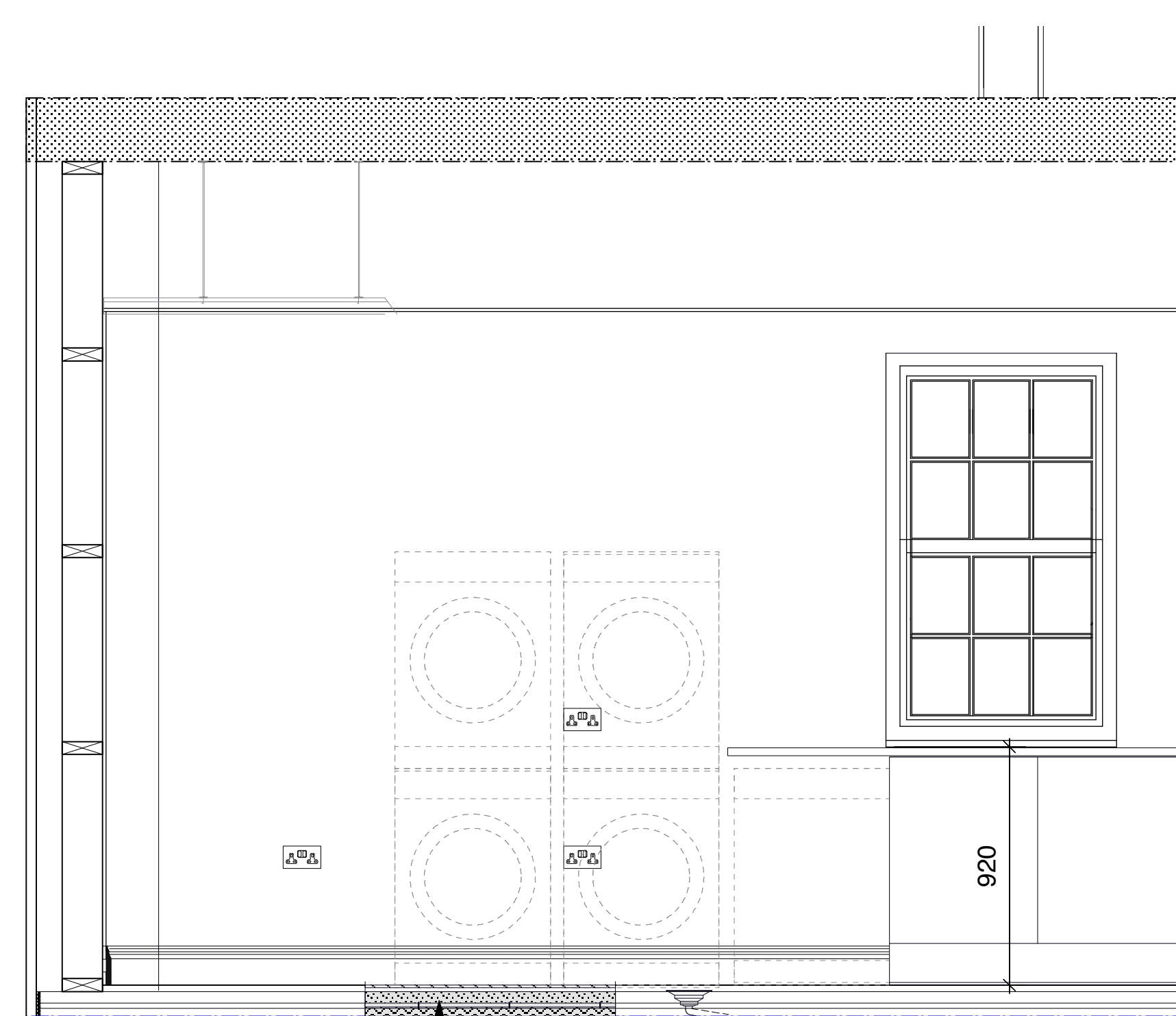


REFLECTIVE CEILING PLAN  
Scale 1:20



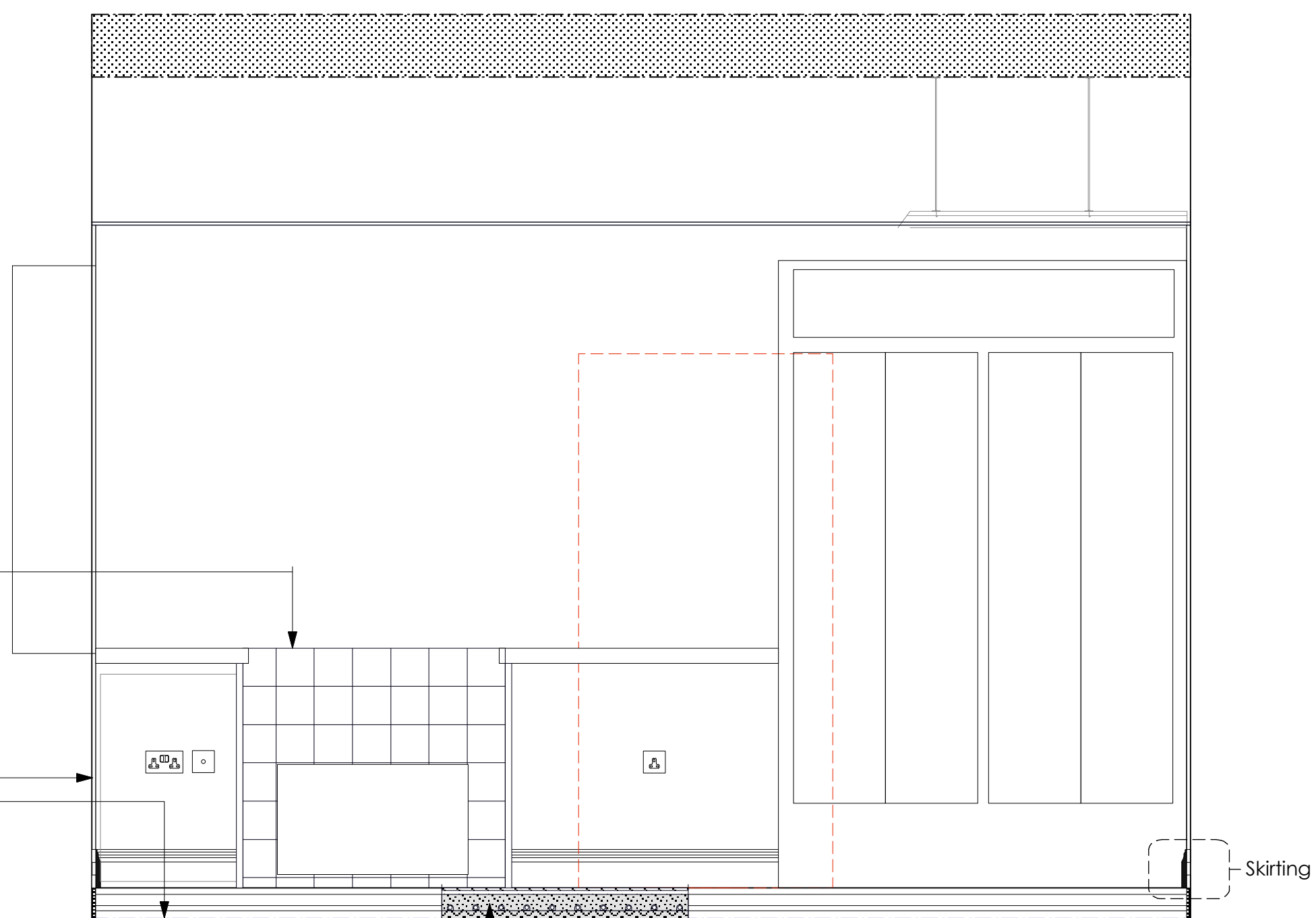
ELEVATION 1  
Scale 1:20

Make up of floor: 300mm x 300mm x 10mm ceramic tiles on Ditra matting on min. 65mm screen on min. 30mm rigid insulation; allow additional screed to line FFL with stone floor adjacent; underfloor heating pipes incorporated within screen



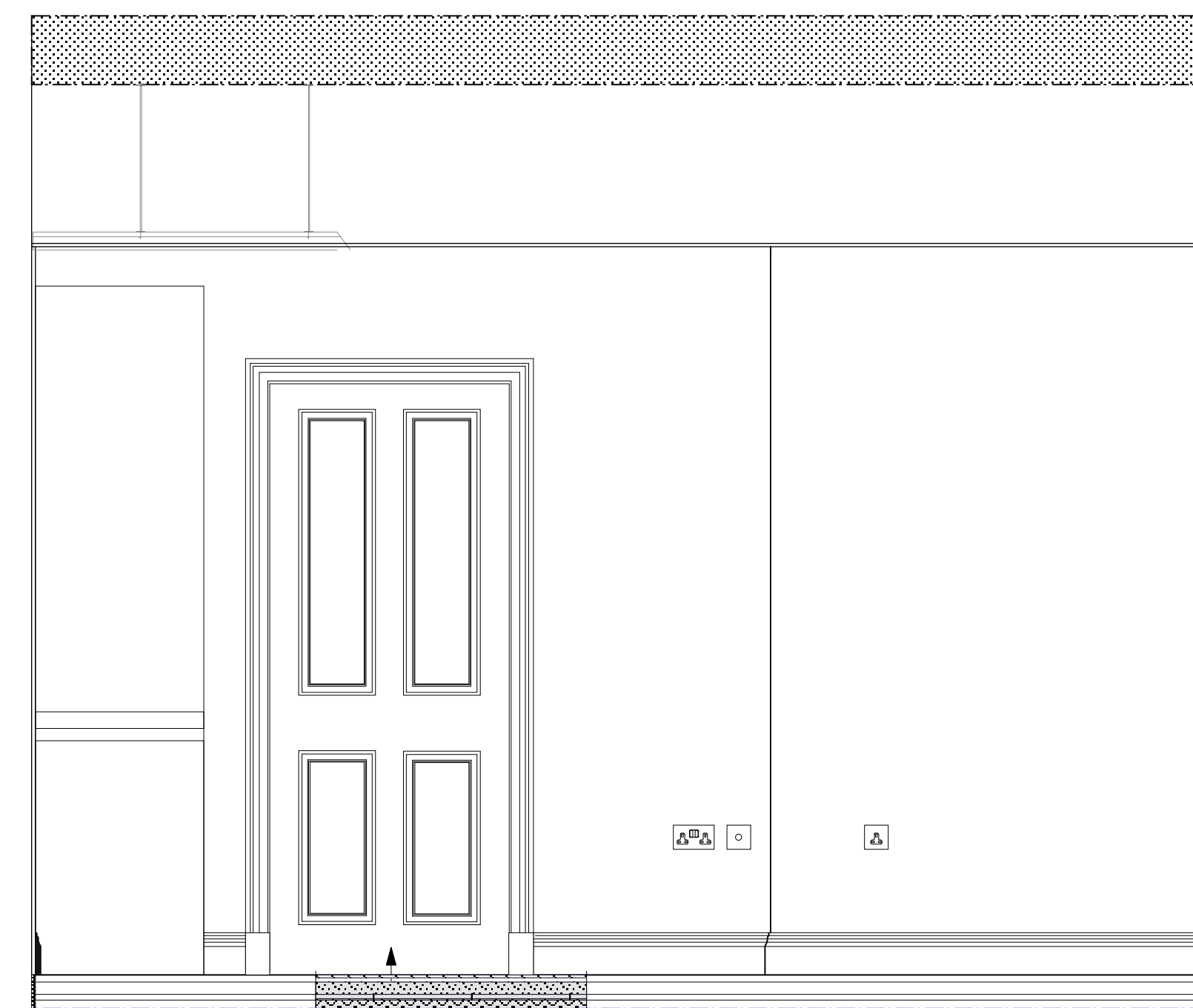
ELEVATION 2  
Scale 1:20

Make up of floor: 300mm x 300mm x 10mm ceramic tiles on Ditra matting on min. 65mm screen on min. 30mm rigid insulation; allow additional screed to line FFL with stone floor adjacent; underfloor heating pipes incorporated within screen



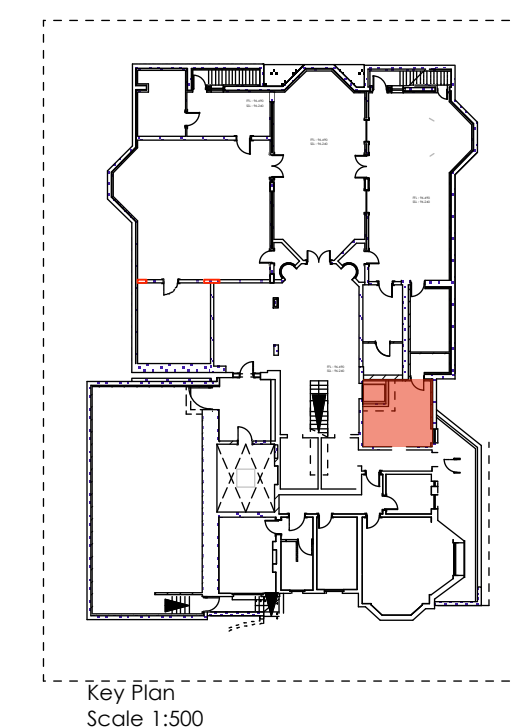
ELEVATION 3  
Scale 1:20

Make up of floor: 300mm x 300mm x 10mm ceramic tiles on Ditra matting on min. 65mm screen on min. 30mm rigid insulation; allow additional screed to line FFL with stone floor adjacent; underfloor heating pipes incorporated within screen



ELEVATION 4  
Scale 1:20

Make up of floor: 300mm x 300mm x 10mm ceramic tiles on Ditra matting on min. 65mm screen on min. 30mm rigid insulation; allow additional screed to line FFL with stone floor adjacent; underfloor heating pipes incorporated within screen



Key Plan  
Scale 1:500

**NOTE: For full details of all pipe runs, drainage runs, cable management and mechanical ventilation refer to mechanical and electrical sub-contractors drawings**

Rev A: August 2013 - Planning and Listed Bldg Consent Submission

Rev B: August 2013 - Electrics amended

Rev C: January 2014 - Revised Planning and Listed Bldg Consent Submission

**REVISED PLANNING & LISTED BLDG CONSENT SUBMISSION**

|  |                |   |                      |
|--|----------------|---|----------------------|
| <b>AP (a.)</b><br>alan power   (ARCHITECTS.)<br>13, Needham Road, London, W11 2RP<br>Tel: 020 7229 9575 Fax: 020 7221 4172 | <b>DRAWING</b> | <b>ROOM RB 6: LAUNDRY ROOM PLANS &amp; ELEVATIONS</b> | <b>DRWG. N°.</b>     |
|  | <b>PROJECT</b> | <b>THE ELMs, FITZROY PARK, N6 6HS</b>                 | <b>492/RB6</b>       |
|  | <b>CLIENT</b>  | <b>ELM INTERNATIONAL Ltd.</b>                         | <b>Rev. C</b>        |
|  |                |   | <b>Date Dec 2012</b> |

DO NOT SCALE FROM THIS DRAWING. ALL DIMENSIONS TO BE CHECKED ON SITE AND DISCREPANCIES REPORTED TO ARCHITECT

**A1** 1:50@ A1  
1:100 @ A3