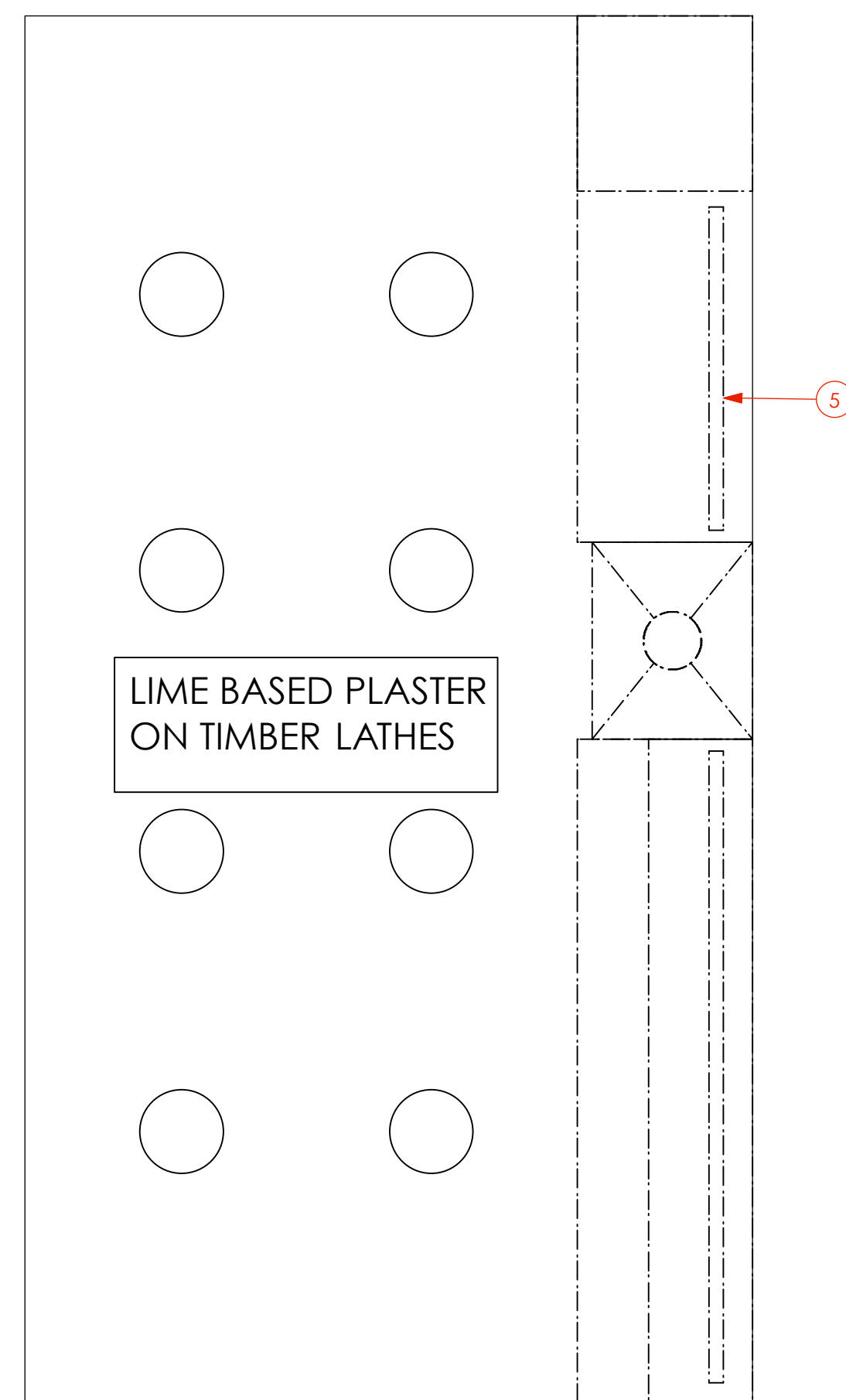
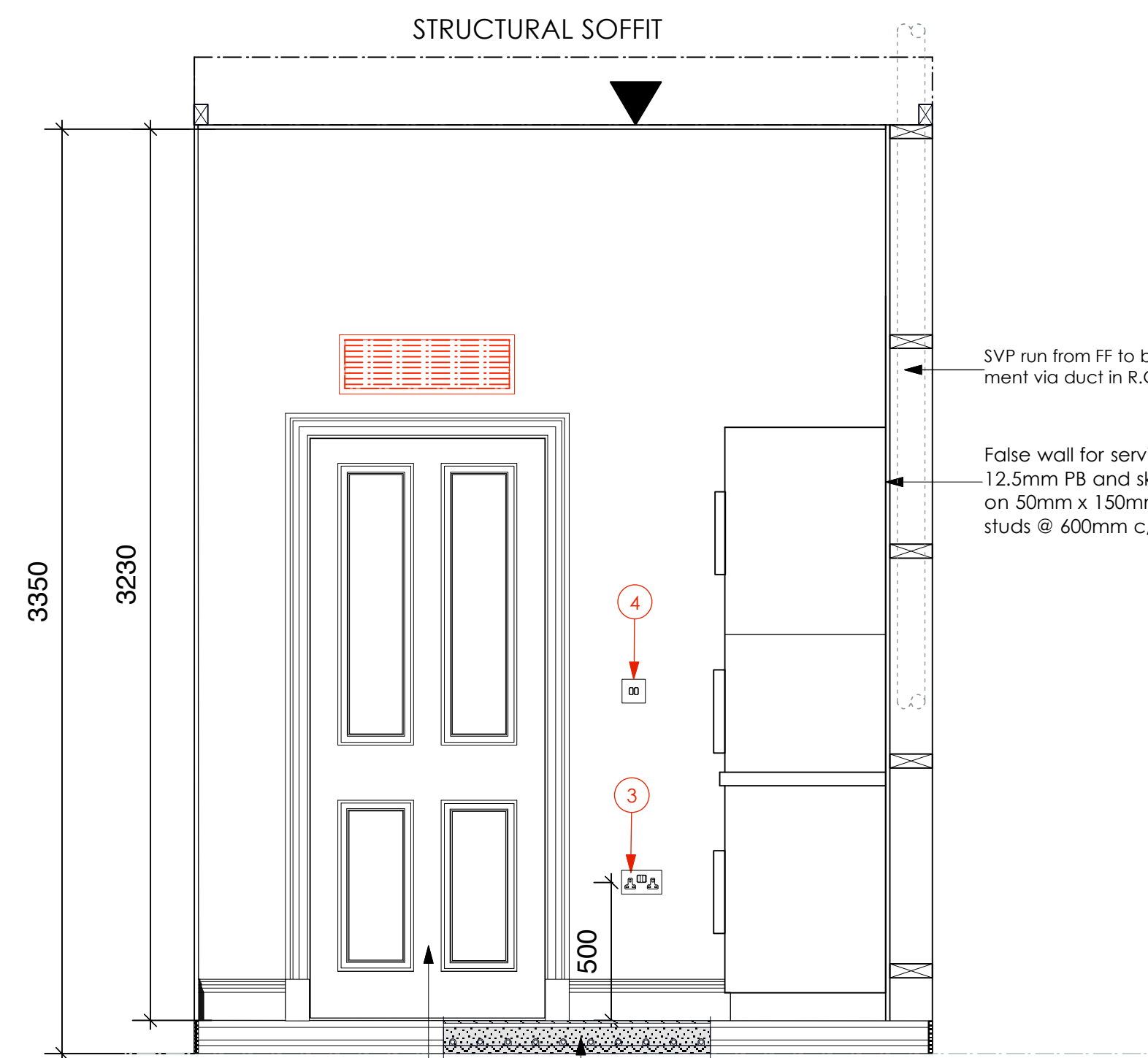
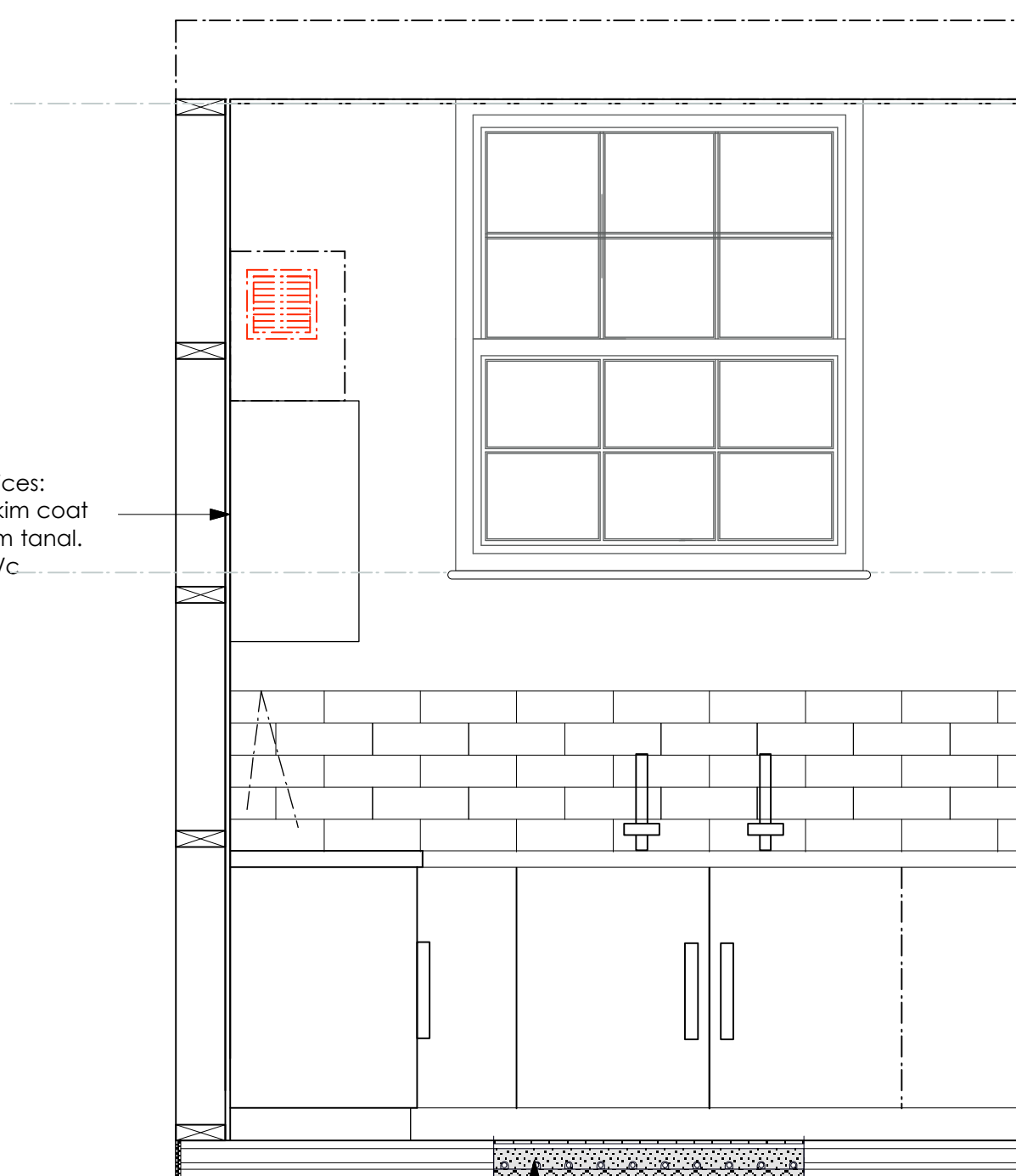
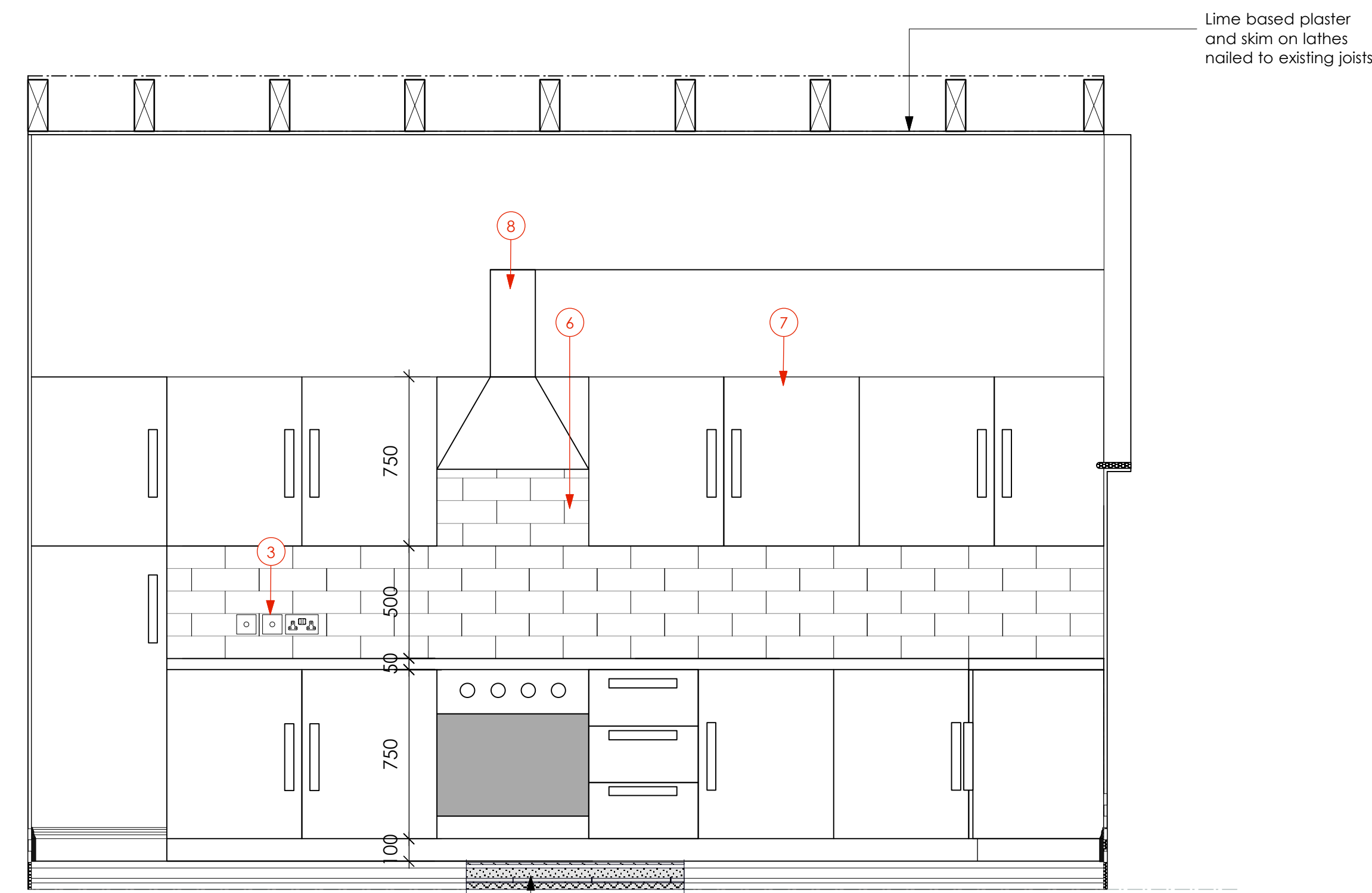
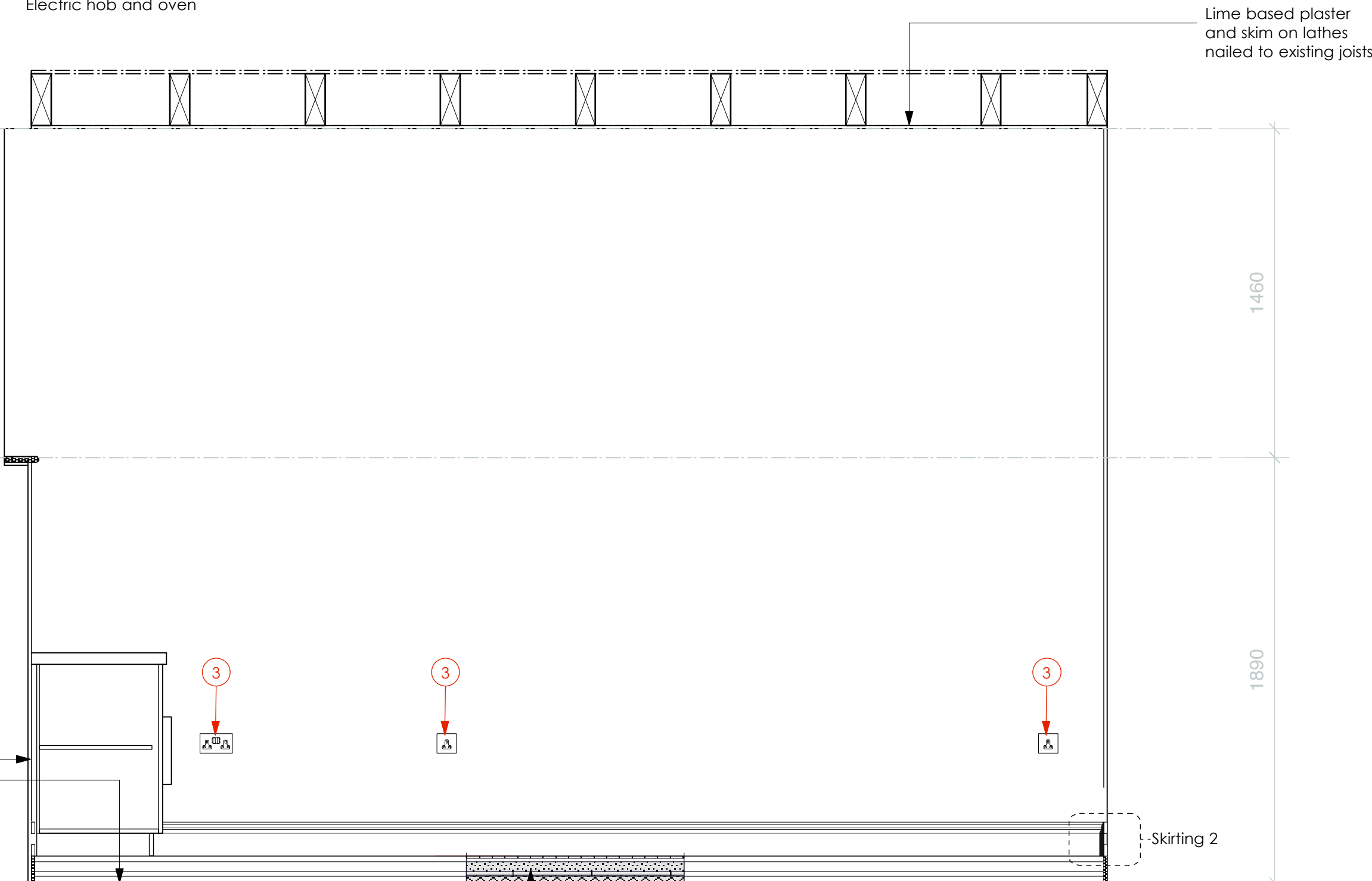
PLAN
Scale 1:20REFLECTIVE CEILING PLAN
Scale 1:20ELEVATION 1
Scale 1:20ELEVATION 3
Scale 1:20ELEVATION 2
Scale 1:20
Kitchen units to be white melamine from the John Strand range (or similar approved); include for white melamine worktop. Electric hob and oven.ELEVATION 4
Scale 1:20

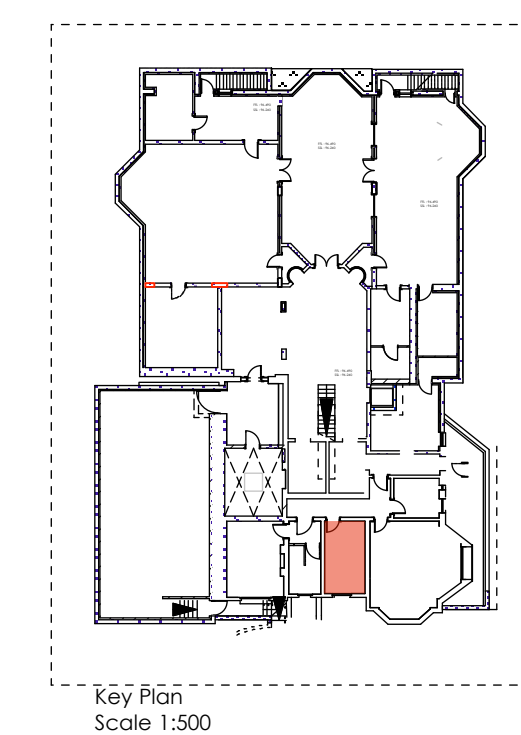
Queries – Fltout/ M&E – RB10

1. Moulding and skirting profiles as per 492/DO11.
2. Heating requirements T.B.C.
3. Power and IT points shown indicatively to reflect design intent.
4. Light switch specifications T.B.C.
5. Strip lighting under wall units
6. 100x300 wall tiling TBC.
7. Kitchen units TBC.
8. Proposed cooker hood ducted to external wall mounted extract fan
9. For all services and M&E works please refer to relevant contractor drawings
10. Ironmongery specification T.B.C.
11. Sanitaryware specification T.B.C.

Symbol Key

- RXXX Radiator. Size and output to be determined and confirmed by contractor.
- UF Underfloor heating
- Telephone/ IT point
- Power socket

FUSED SPURS FOR FRIDGE AND OVEN



NOTE: For full details of all pipe runs, drainage runs, cable management and mechanical ventilation refer to mechanical and electrical sub-contractors drawings

Rev A: August 2013 - Planning and Listed Bldg Consent Submission

Rev B: August 2013 - Electrics amended

Rev C: January 2014 - Revised Planning and Listed Bldg Consent Submission

REVISED PLANNING & LISTED BLDG CONSENT SUBMISSION

AP (a.) alan power (ARCHITECTS.)	DRAWING ROOM RB10 : KITCHEN PLANS & ELEVATIONS	DRWG. Nº 492/RB10
PROJECT THE ELMs, FITZROY PARK, N6 6HS	Rev. C	
CLIENT ELM INTERNATIONAL Ltd.	Date Dec 2012	
	Drawn	

DO NOT SCALE FROM THIS DRAWING. ALL DIMENSIONS TO BE CHECKED ON SITE AND DISCREPANCIES REPORTED TO ARCHITECT

A1 1:50@ A1
1:100 @ A3