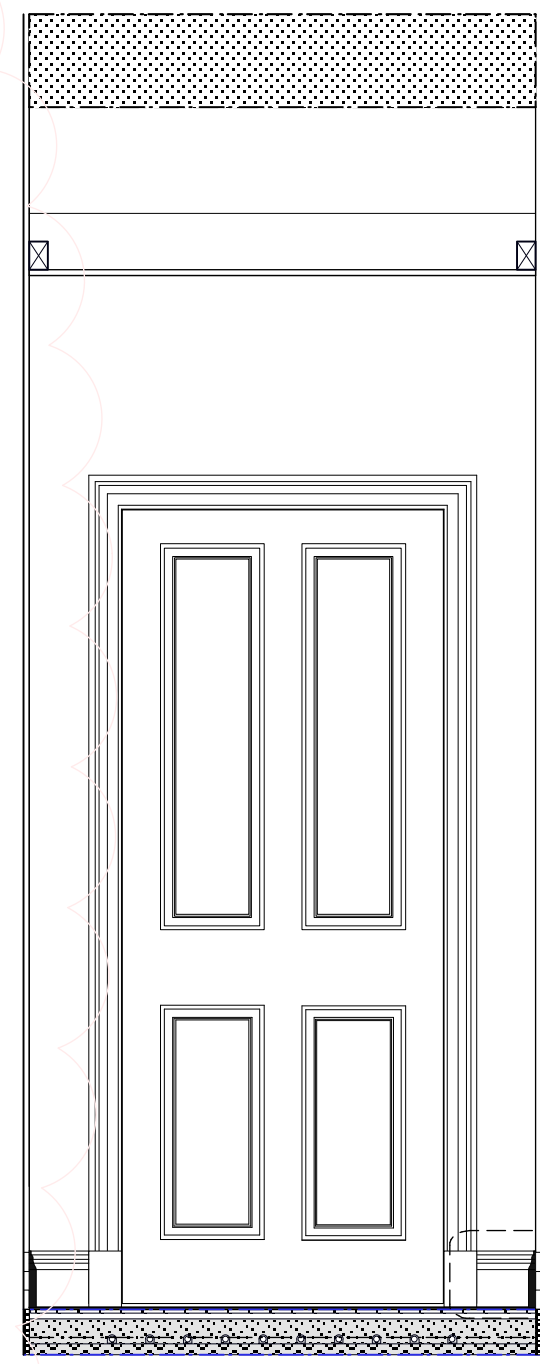
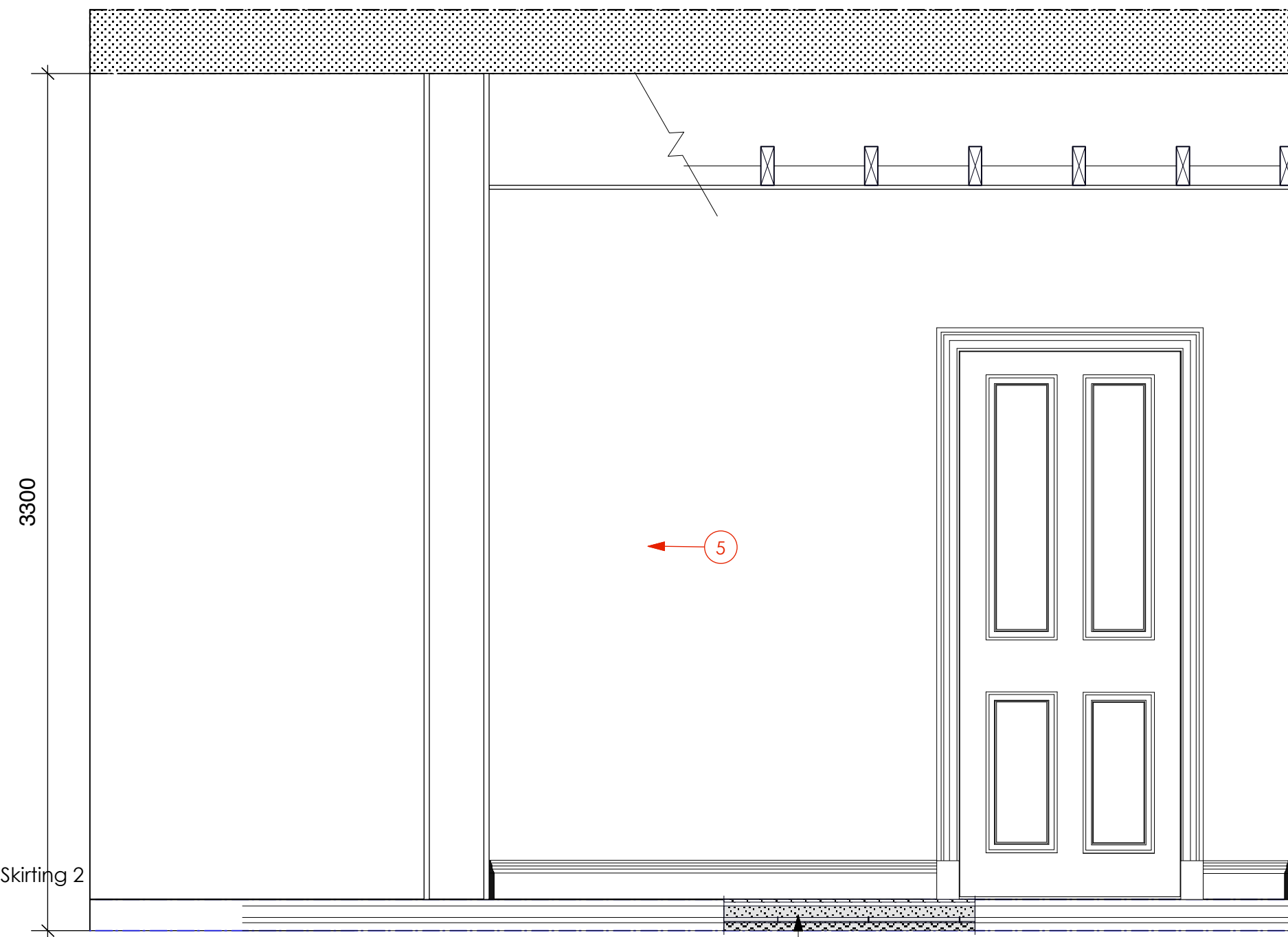


ELEVATION 1
Scale 1:20

Make up of floor: 300mm x 300mm x 10mm ceramic tiles on Ditra matting on min. 65mm screen on min. 30mm rigid insulation; allow additional screed to line FFL with stone floor adjacent; underfloor heating pipes incorporated within screen

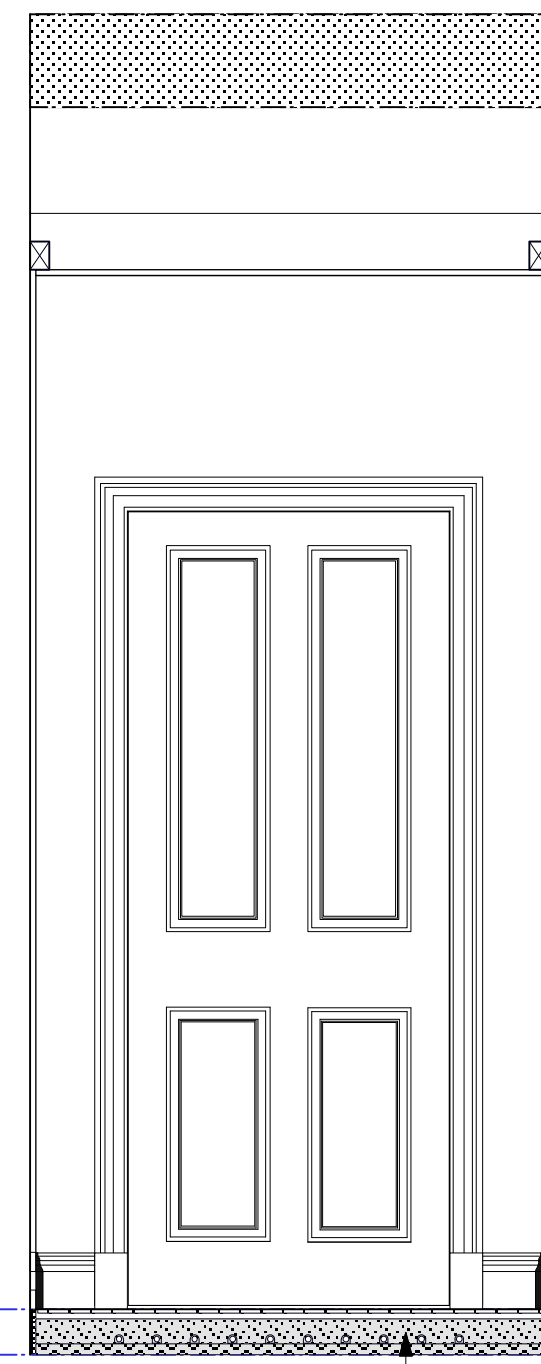


ELEVATION 3
Scale 1:20

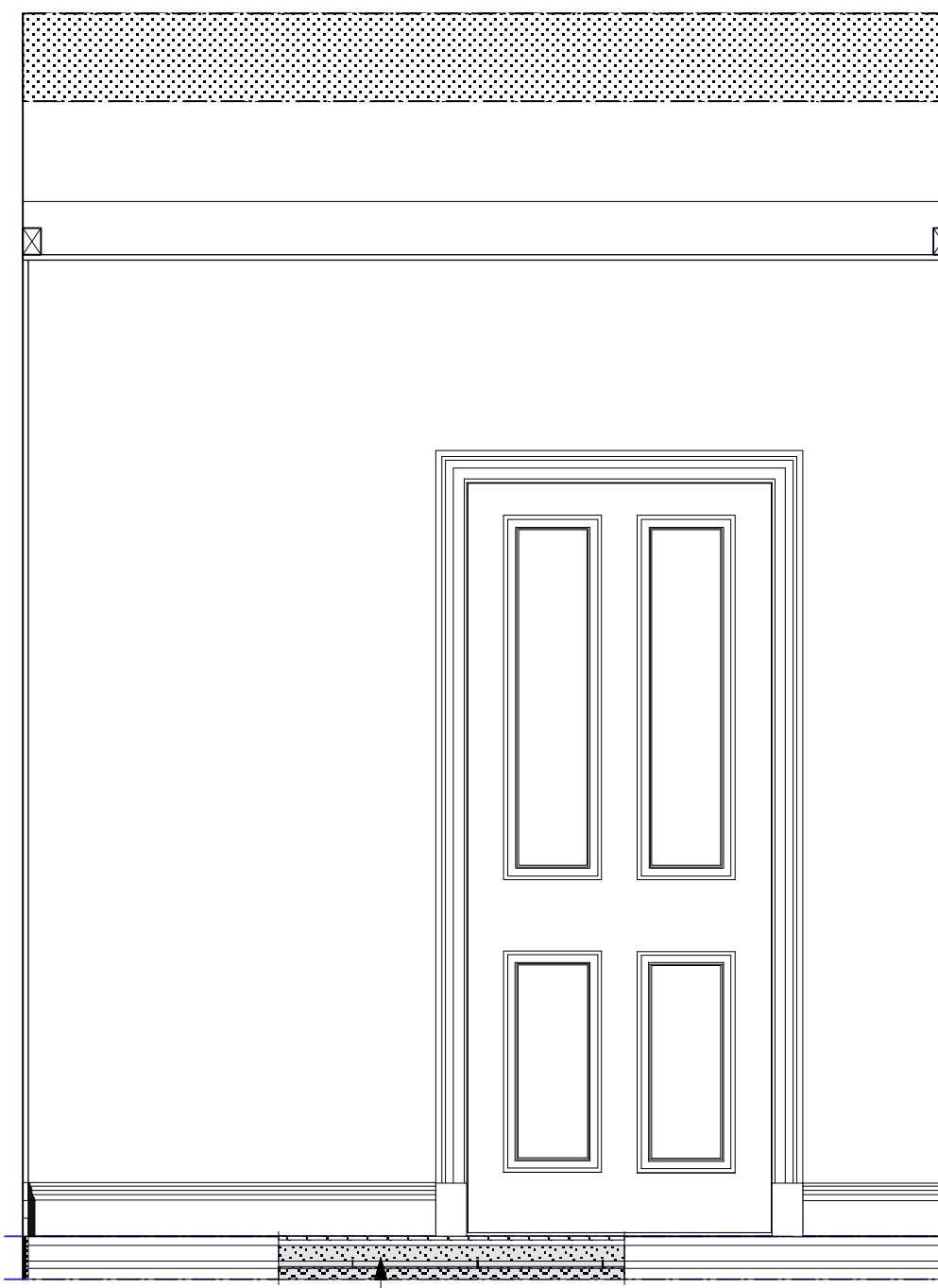


ELEVATION 3
Scale 1:20

Make up of floor: 300mm x 300mm x 10mm ceramic tiles on Ditra matting on min. 65mm screen on min. 30mm rigid insulation; allow additional screed to line FFL with stone floor adjacent; underfloor heating pipes incorporated within screen

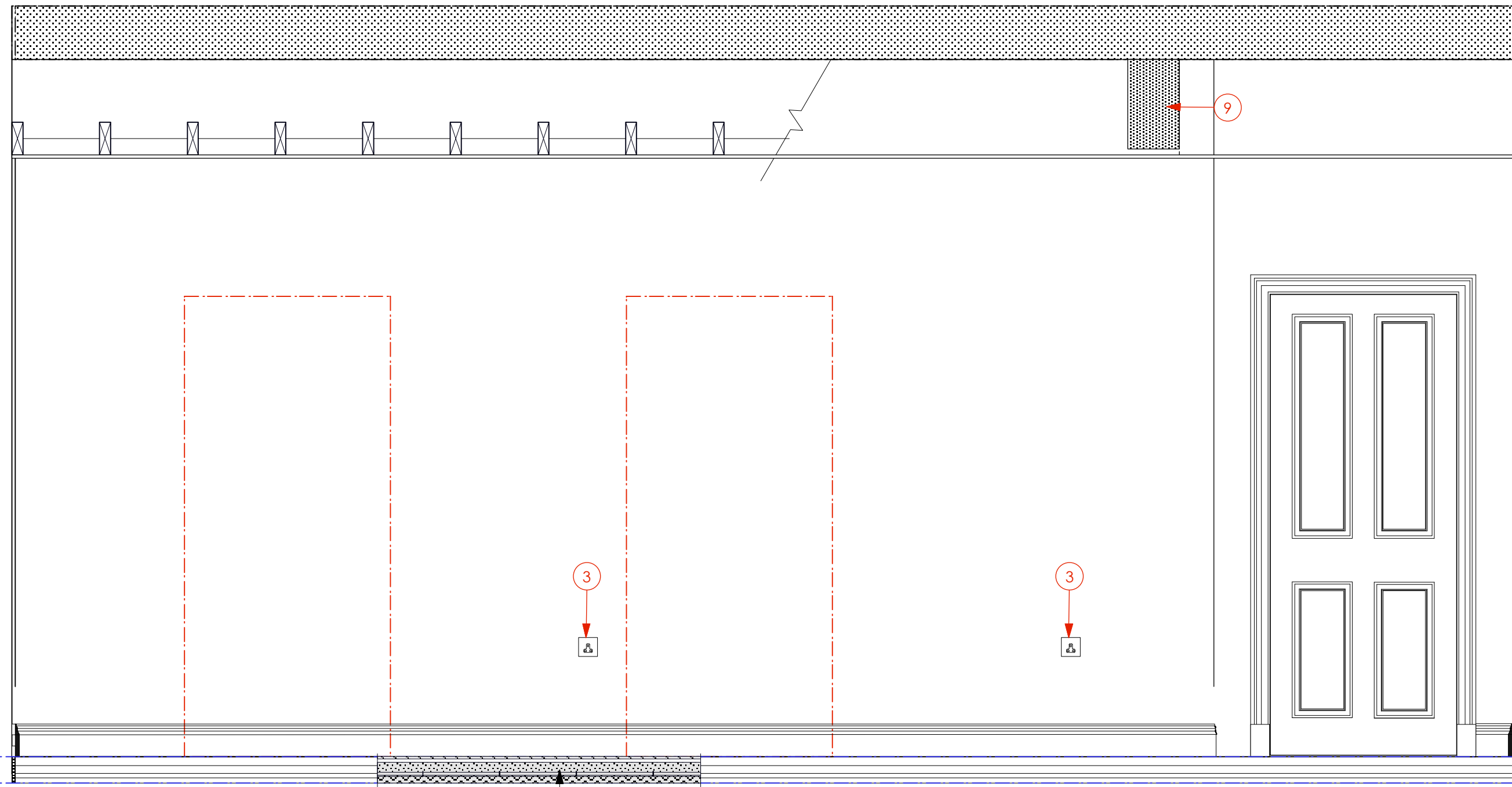


ELEVATION 4
Scale 1:20



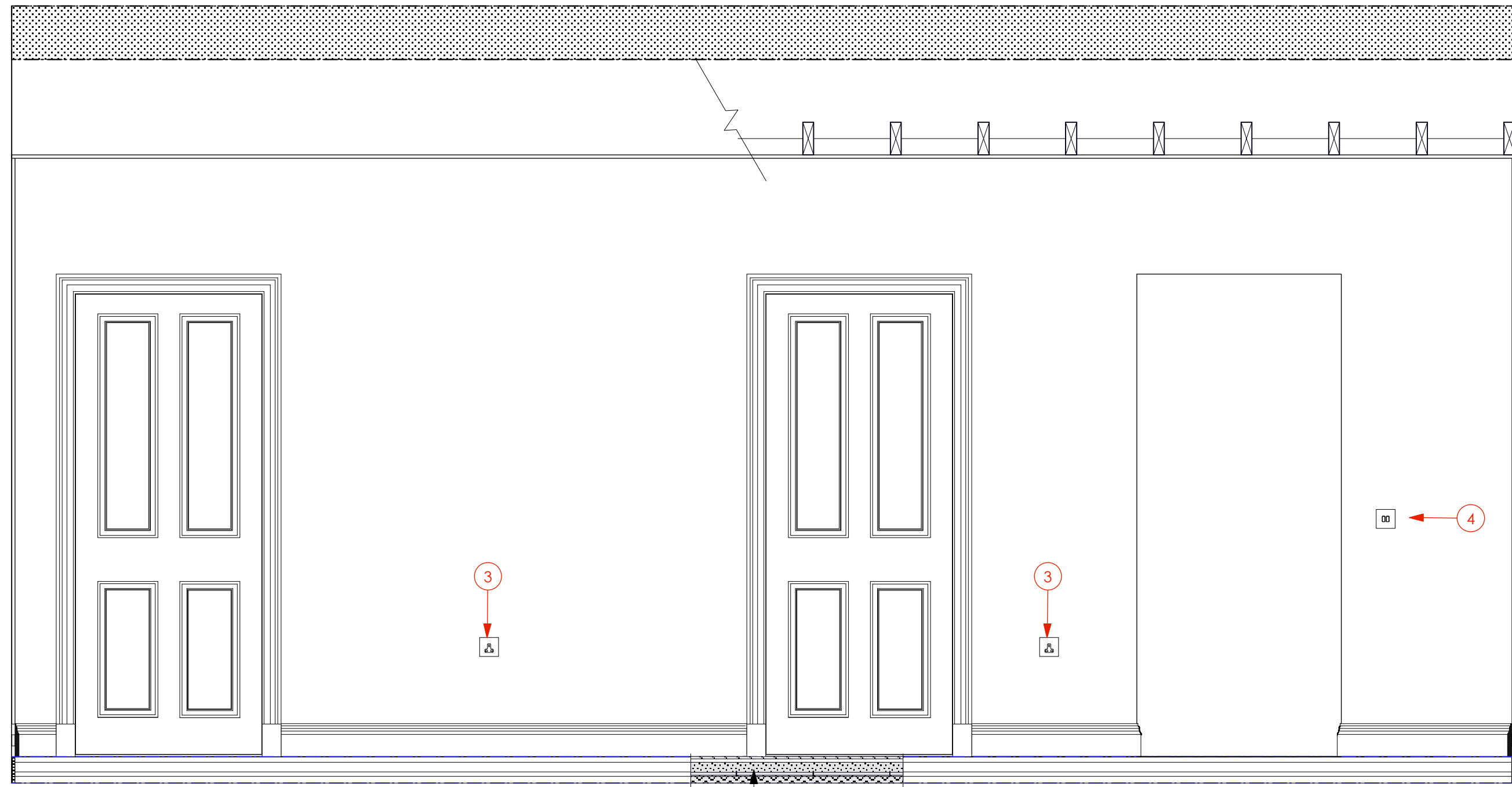
ELEVATION 6
Scale 1:20

Make up of floor: 300mm x 300mm x 10mm ceramic tiles on Ditra matting on min. 65mm screen on min. 30mm rigid insulation; allow additional screed to line FFL with stone floor adjacent; underfloor heating pipes incorporated within screen



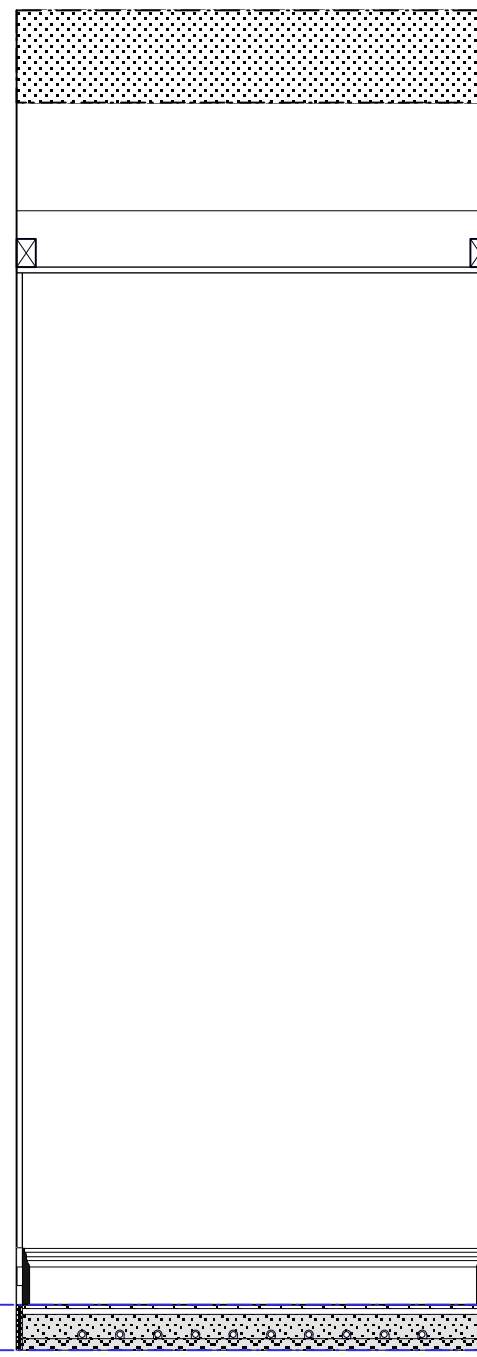
ELEVATION 5
Scale 1:20

Make up of floor: 300mm x 300mm x 10mm ceramic tiles on Ditra matting on min. 65mm screen on min. 30mm rigid insulation; allow additional screed to line FFL with stone floor adjacent; underfloor heating pipes incorporated within screen

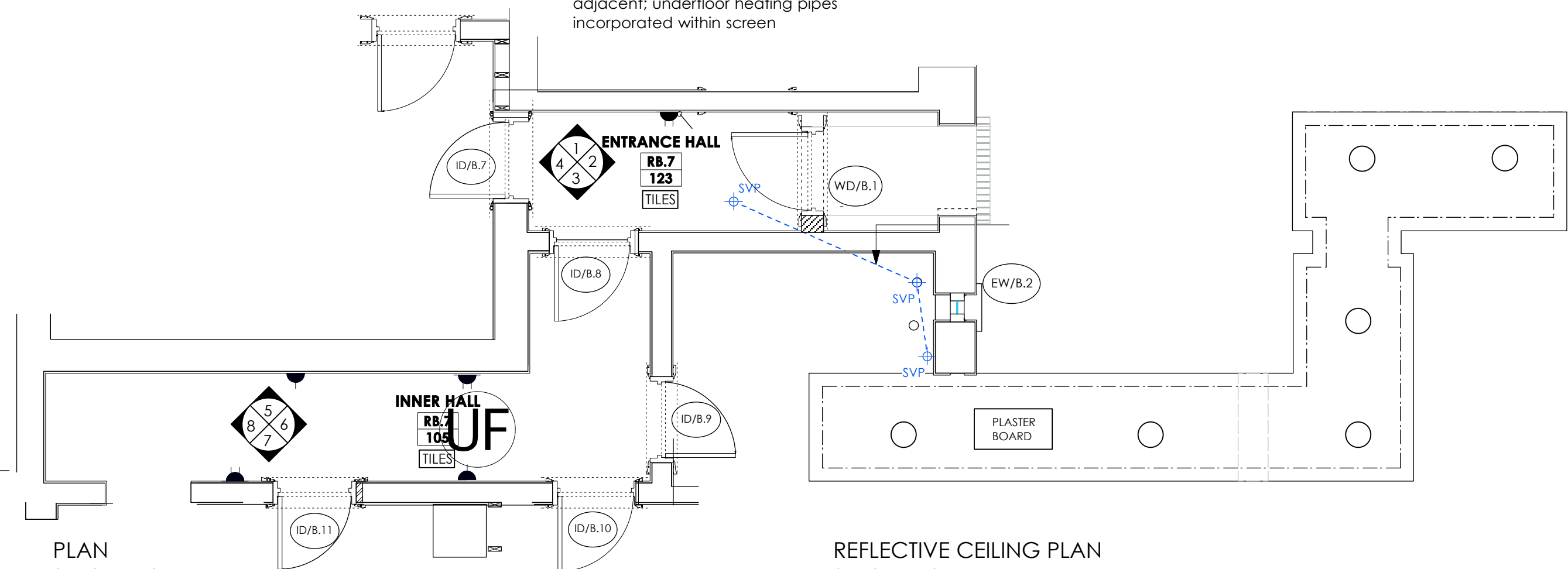


ELEVATION 7
Scale 1:20

Make up of floor: 300mm x 300mm x 10mm ceramic tiles on Ditra matting on min. 65mm screen on min. 30mm rigid insulation; allow additional screed to line FFL with stone floor adjacent; underfloor heating pipes incorporated within screen



ELEVATION 8
Scale 1:20



PLAN
Scale 1:50

REFLECTIVE CEILING PLAN
Scale 1:50

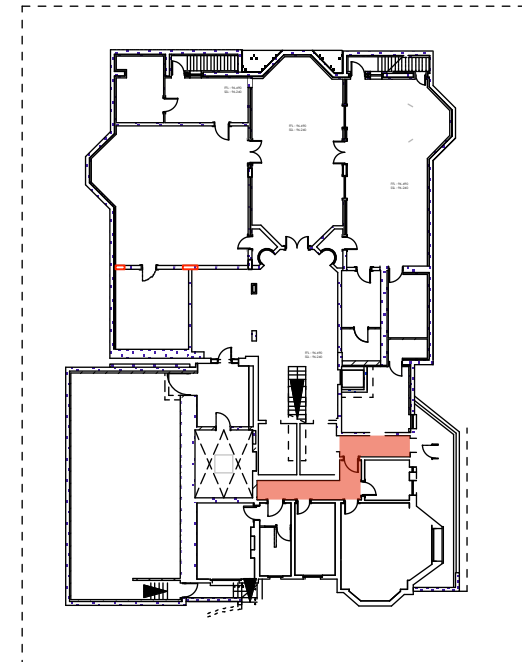
Queries - Fitout/ M&E - RB7

1. Moulding and skirting profiles as per 492/D011
2. Heating requirements T.B.C.
3. Power and IT points shown indicatively to reflect design intent.
4. Light switch specifications T.B.C.
- 5.T.B.C. Corridor reduced to coordinate with ventilation strategy (see note 6)
6. Vent type T.B.C. Design intent is to place plenum on this wall to achieve external ventilation out of sight of the front elevation.
7. For all services and M&E works please refer to relevant contractor drawings
- 8.Ironmongery specification T.B.C.
- 9.Brick Arche to be removed subject to review and structural report.

Symbol Key

RXXX Radiator. Size and output to be determined and confirmed by contractor.

- UF Underfloor heating
- TV Telephone/ IT point
- Power socket



Key Plan
Scale 1:500

NOTE: For full details of all pipe runs, drainage runs, cable management and mechanical ventilation refer to mechanical and electrical sub-contractors drawings

Rev A: August 2013 - Planning and Listed Bldg Consent Submission

Rev B: August 2013 - Electrics amended

Rev C: January 2014 - Revised Planning and Listed Bldg Consent Submission

REVISED PLANNING & LISTED BLDG CONSENT SUBMISSION

AP (a.) alan power (ARCHITECTS.) <small>13, Newham Road, London, W11 2BP Tel: 020 7229 9375 Fax: 020 7221 4172</small>	DRAWING ROOM RB 7: ENTRANCE HALL PLANS & ELEVATIONS	DRWG. N° 492/RB7
	PROJECT THE ELMS, FITZROY PARK, N6 6HS	Rev. C
	CLIENT ELM INTERNATIONAL Ltd.	Date Dec 2012
		Drawn

DO NOT SCALE FROM THIS DRAWING. ALL DIMENSIONS TO BE CHECKED ON SITE AND DISCREPANCIES REPORTED TO ARCHITECT

A1 1:50@ A1
1:100 @ A3