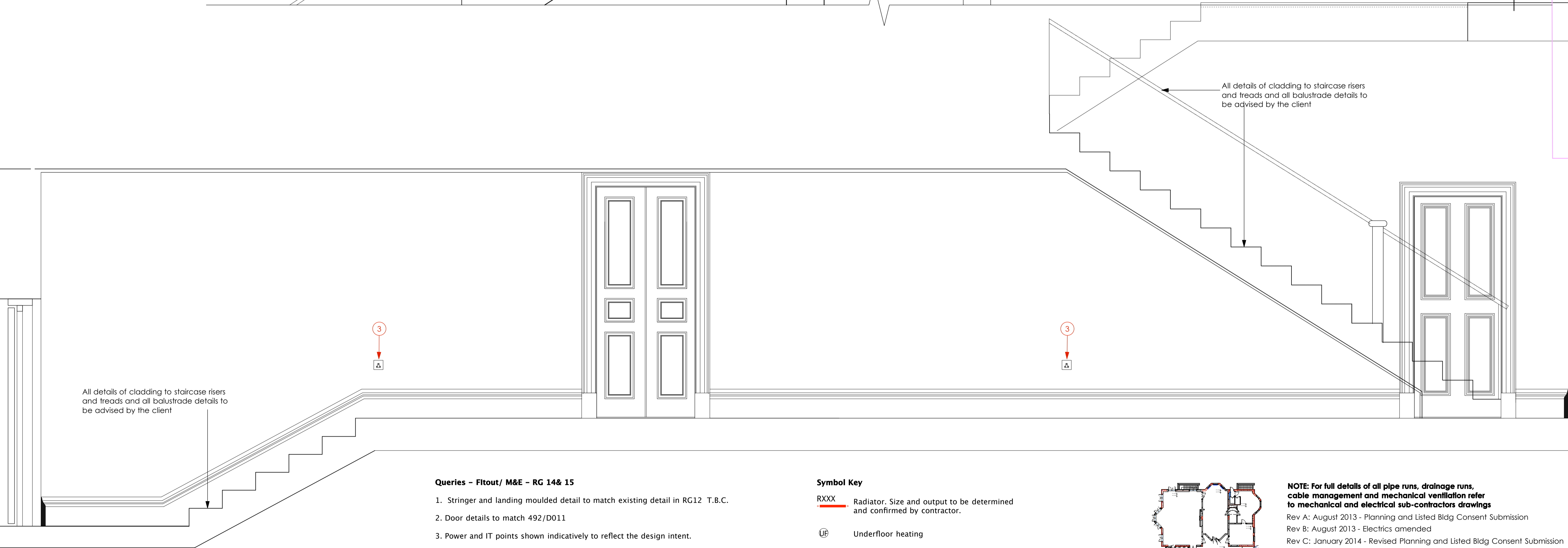


ELEVATION 2  
Scale 1:20



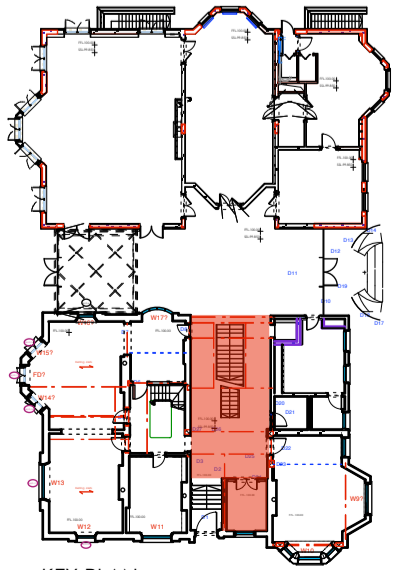
ELEVATION 4  
Scale 1:20

Queries – Fitout/ M&E – RG 14& 15

1. Stringer and landing moulded detail to match existing detail in RG12 T.B.C.
2. Door details to match 492/D011
3. Power and IT points shown indicatively to reflect the design intent.
4. Light switch specifications T.B.C.
6. For all services and M&E works please refer to relevant contractor drawings
5. Ironmongery specification T.B.C.

Symbol Key

- RXXX Radiator. Size and output to be determined and confirmed by contractor.
- UF Underfloor heating
- Telephone/ IT point
- Power socket



**NOTE: For full details of all pipe runs, drainage runs, cable management and mechanical ventilation refer to mechanical and electrical sub-contractors drawings**

Rev A: August 2013 - Planning and Listed Bldg Consent Submission  
Rev B: August 2013 - Electrics amended  
Rev C: January 2014 - Revised Planning and Listed Bldg Consent Submission

**REVISED PLANNING & LISTED BLDG CONSENT SUBMISSION**

<b>AP</b> (a.) alan power   (ARCHITECTS.)	<b>DRAWING</b> <b>ROOM RG14&amp;15 : HALL &amp; DRESSING ROOM SHEET 2</b>	<b>DRWG. N°:</b> 492/RG14,15-02
<b>PROJECT</b> THE ELMS, FITZROY PARK, N6 6HS	<b>Rev.</b> <b>C</b>	<b>Scale</b> 1:100 @ A3
<b>CLIENT</b> ELM INTERNATIONAL Ltd.	<b>Date</b> Dec 2012	<b>Drawn</b>

13, Newham Road, London, W11 2NP  
Tel: 020 7229 9375 Fax: 020 7221 4172

DO NOT SCALE FROM THIS DRAWING. ALL DIMENSIONS TO BE CHECKED ON SITE AND DISCREPANCIES REPORTED TO ARCHITECT

**A1** 1:50@ A1  
1:100 @ A3