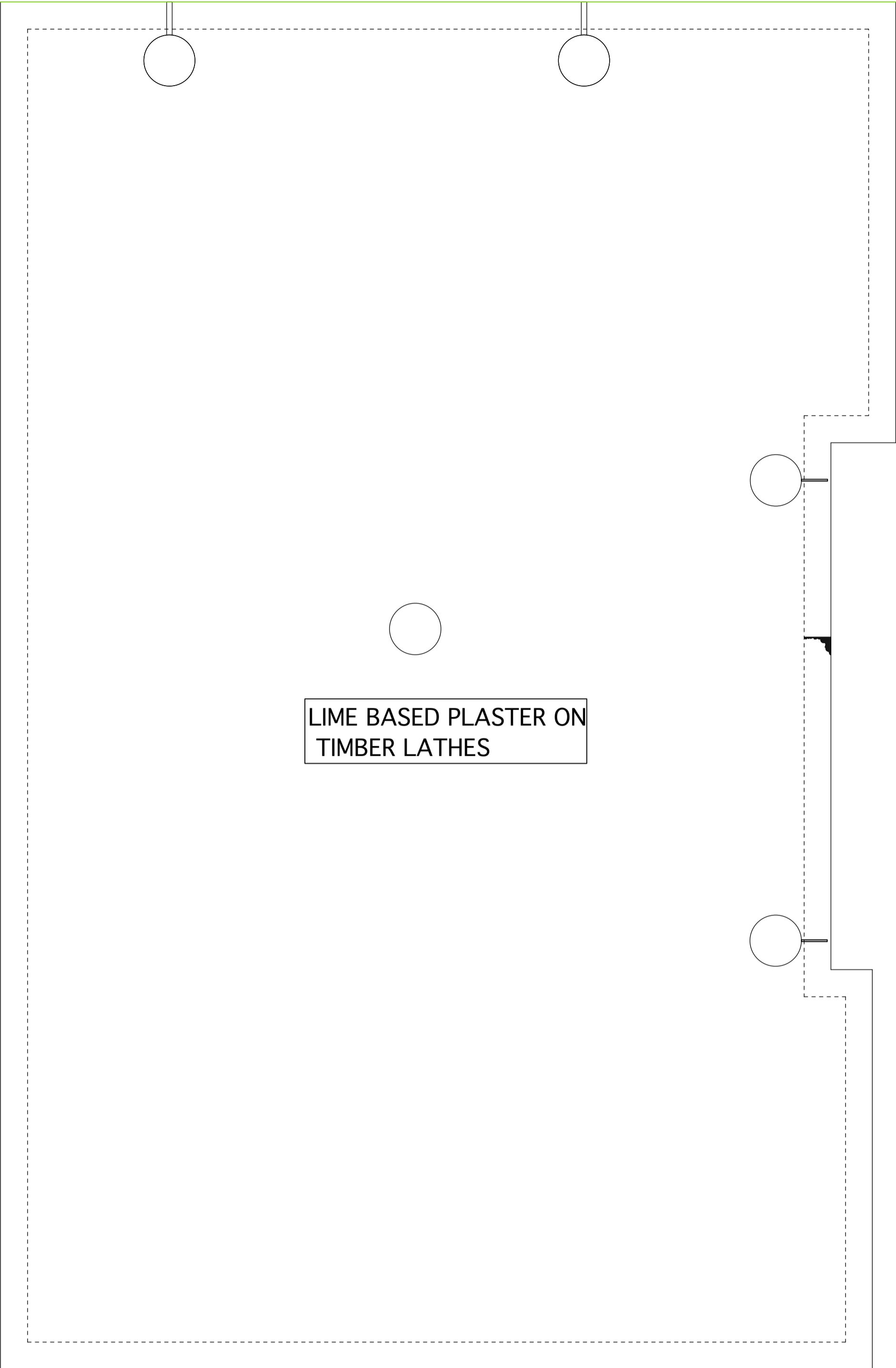
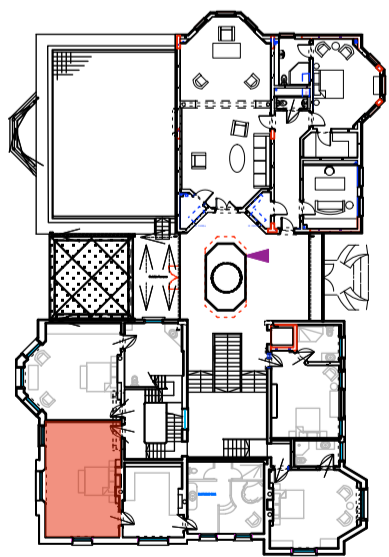


PLAN
Scale 1:20

All original timber mouldings around windows to be reinstated as per the Luard report



REFLECTIVE CEILING PLAN
Scale 1:20



KEY PLAN
Scale 1:500

NOTE: For full details of all pipe runs, drainage runs, cable management and mechanical ventilation refer to mechanical and electrical sub-contractors drawings

Rev A: August 2013 - Planning and Listed Bldg Consent Submission
Rev B: August 2013 - Electrics amended
Rev C: January 2014 - Revised Planning and Listed Bldg Consent Submission

REVISED PLANNING & LISTED BLDG CONSENT SUBMISSION

AP (a.) alan power (ARCHITECTS.) <small>Alan Power Architects Ltd 13 Neatham Road London, W11 2BP Tel: 020 7229 9375 Fax: 020 7221 4172</small>	DRAWING ROOM NO: R1.12 SHEET 1	DRWG. N° 492/R1.12-1
	PROJECT THE ELMS FITZROY PARK, N6 6HS	Rev C
	CLIENT ELM INTERNATIONAL Ltd.	Date Dec 2012
		Drawn

DO NOT SCALE FROM THIS DRAWING. ALL DIMENSIONS TO BE CHECKED ON SITE AND DISCREPANCIES REPORTED TO ARCHITECT