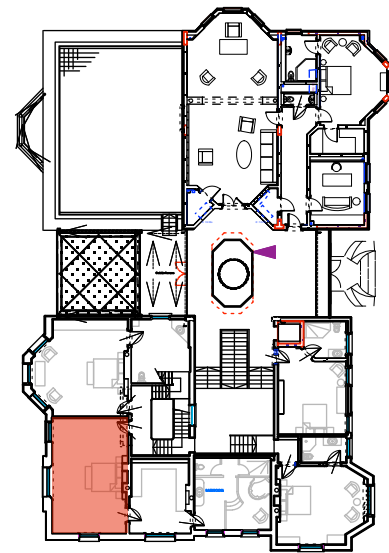


W-6 [EW/1.15 Room R1.12]

ID No:	Window Label:	Description:	Date:	State:	Recommendation in Report:	Dimensions:	Materials:	Paint:	Lead	Additional Comments:
423	W6	Vertical Shutter : Left	19th C	Usable	Luard Recommendation: reuse	1769 x 983 x 24	softwood	lp		



KEY PLAN  
Scale 1:500

**NOTE:** For full details of all pipe runs, drainage runs, cable management and mechanical ventilation refer to mechanical and electrical sub-contractors drawings

Rev A: August 2013 - Planning and Listed Bldg Consent Submission  
Rev B: August 2013 - Electrics amended  
Rev C: January 2014 - Revised Planning and Listed Bldg Consent Submission

**REVISED PLANNING & LISTED BLDG CONSENT SUBMISSION**

<b>AP</b> (a.) alan power   (ARCHITECTS.) <small>Alan Power Architects Ltd 13 Needham Road London, W11 2RP Tel: 020 7229 9175 Fax: 020 7221 4172</small>	<b>DRAWING</b>	<b>ROOM NO: R1.12</b>	<b>DRWG. N°:</b>
	<b>PROJECT</b>	<b>SHEET 2</b>	<b>492/R1.12-2</b>
	<b>CLIENT</b>	THE ELMS FITZROY PARK, N6 6HS	<b>Rev. C</b>
	<b>Drawn</b>	ELM INTERNATIONAL Ltd.	<b>Scale</b>
		<b>Date</b>	<b>Dec 2012</b>

DO NOT SCALE FROM THIS DRAWING. ALL DIMENSIONS TO BE CHECKED ON SITE AND DISCREPANCIES REPORTED TO ARCHITECT