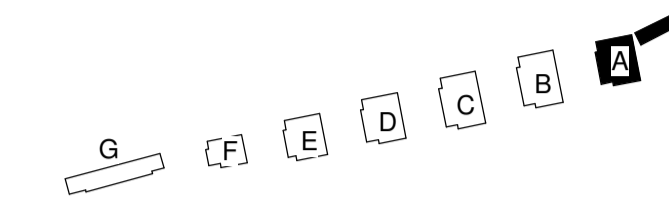


This drawing is copyright and shall not be reproduced or used for any other purpose without the written permission of the Architects.  
 It is the contractors responsibility to ensure full compliance with the Building Regulations.  
 It is the contractors responsibility to check and verify all dimensions on site.  
 Any discrepancies to be reported immediately.  
 IF IN DOUBT ASK.  
 Materials not in conformity with relevant British or European Standards/Codes of practice or materials known to be deleterious to health & safety must not be used or specified on this project.  
 Materials known to contain asbestos contaminated materials (ACM's) in the manufacture or installation process have not been specified and must not be used on this project.

KEY



SOUTH ELEVATION

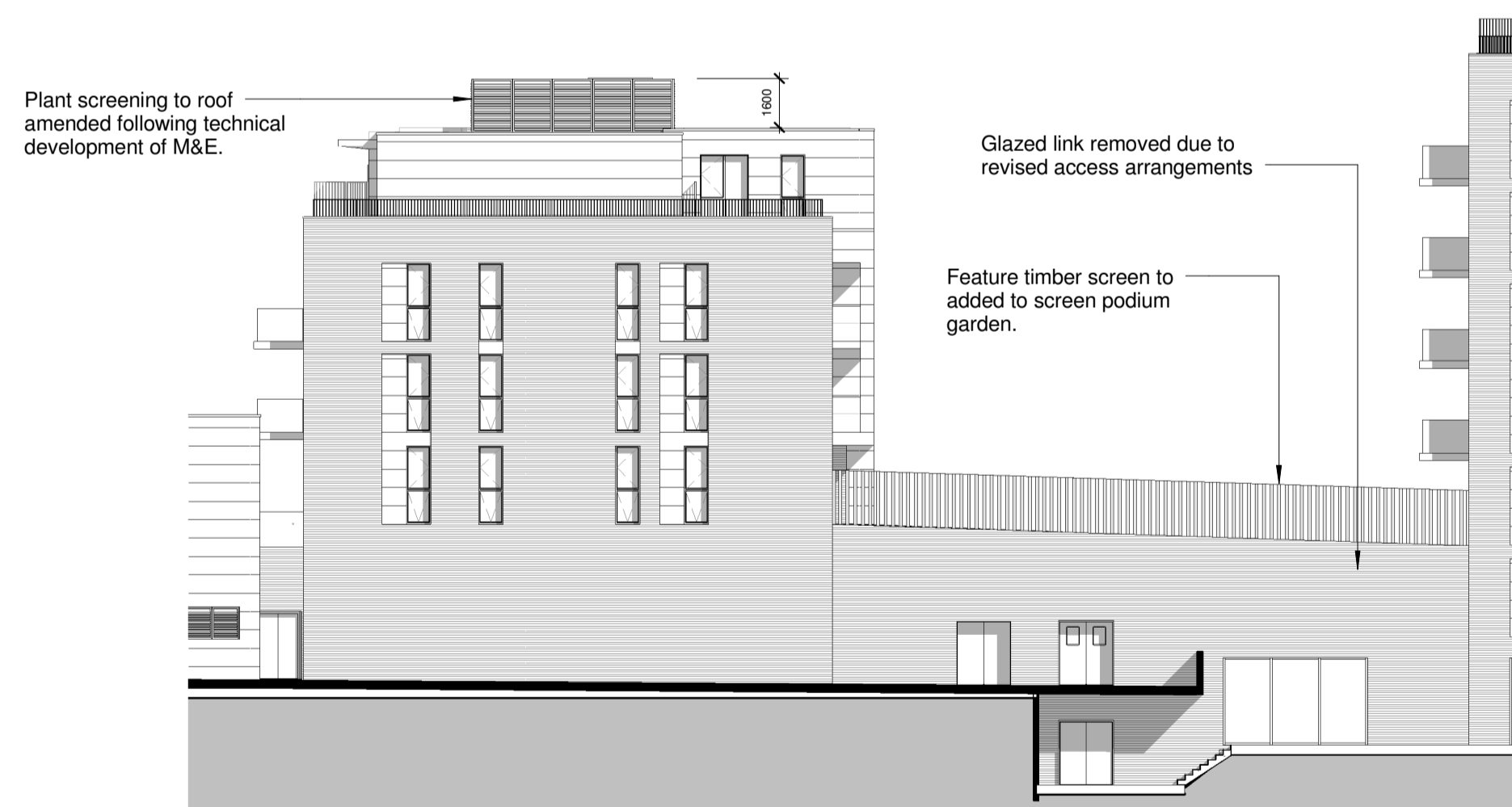
GF Fenestration reduced and rationalised to promote closer architectural relationship to rectilinear elevations above.



EAST ELEVATION

Plant screening to roof amended following technical development of M&E.

GF Fenestration reduced and rationalised to promote closer architectural relationship to rectilinear elevations above.

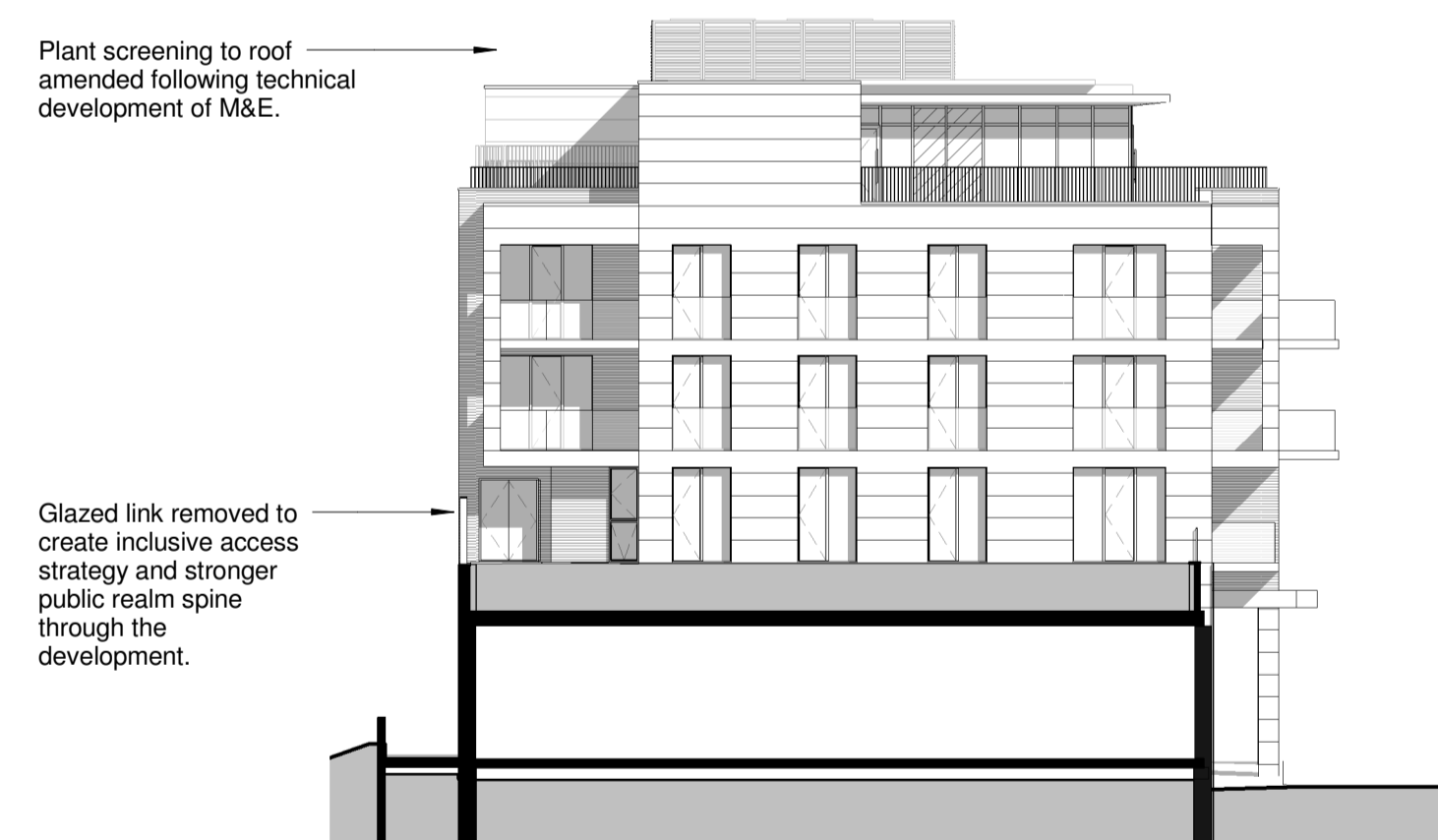


NORTH ELEVATION

Plant screening to roof amended following technical development of M&E.

Glazed link removed due to revised access arrangements

Feature timber screen to added to screen podium garden.



WEST ELEVATION

Plant screening to roof amended following technical development of M&E.

Glazed link removed to create inclusive access strategy and stronger public realm spine through the development.

No	Date	Description	By	Ckd
D	31.01.14	Rooftop plant screening revised.	AM	IL
C	28.11.13	Podium materiality amended.	MDB	IL
B	25.10.13	Elevation revised as per revised ground floor plan	SS	IL
A	23.05.13	Amended in line with comments received via email on the 13.05.2013 @ 1552	AKS	JA



PROJECT  
 West Hampstead Square

TITLE  
 Block A Elevations

DRAWING STATUS  
 For Information

DRAWN	SS	CHECKED	Checker
SCALE	As indicated @ A1		
DATE	05/14/13		

**wcec** architects  
 31-35 Kirby Street, Farringdon  
 London, EC1N 8TE  
 t:020 3388 0019, e: email@wcec.co.uk, www.wcec.co.uk

JOB NO.	DRAWING NO.	REV
12-316	PL-10	D