



**SYNTEGRA CONSULTING**  
*Intelligent & Green Building Solutions*

# Daylight, Sunlight & Overshadowing Report

February 2014

10A Oakhill Avenue, London, NW3 7RE

## Contents

<b>QUALITY STANDARDS CONTROL</b>	<b>2</b>
<b>1. INSTRUCTIONS AND BRIEF</b>	<b>4</b>
<b>2. PLANNING POLICY</b>	<b>4</b>
<b>3. GUIDANCE</b>	<b>4</b>
<b>4. ASSESSMENT METHODOLOGY</b>	<b>5</b>
<b>5. SIGNIFICANT CRITERIA</b>	<b>6</b>
<b>6. CONCLUSIONS</b>	<b>9</b>
<b>7. APPENDIX</b>	<b>12</b>

## Quality Standards Control

The signatories below verify that this document has been prepared in accordance with our quality control requirements. These procedures do not affect the content and views expressed by the originator.

This document must only be treated as a draft unless it is has been signed by the originators and approved by a director.

DATE	ORIGINATORS	APPROVED
07.02.2014	FC	AWK

<i>Revision</i>	A
Date	07.02.2014
Prepared by	FC
Checked by	AWK
Authorised by	AWK

## Limitations

Syntegra Consulting Ltd (“SC”) has prepared this report for the sole use of **Eli Nathenson (“Client”)** in accordance with the agreement under which our services were performed. No other warranty, expressed or implied, is made as to the professional advice included in this report or any other services provided by SC. This report is confidential and may not be disclosed by the client or relied upon by any other party without the prior and express written agreement of SC.

The conclusions and recommendations contained in this report are based upon information provided by others and upon the assumption that all relevant information has been provided by those parties from whom it has been requested and that such information is accurate. Information obtained by SC has not been independently verified by SC, unless otherwise stated in the report.

The methodology adopted and the sources of information used by SC in providing its services are outlined in this report. The work described in this report was undertaken in **February 2014** and is based on the conditions encountered and the information available during the said period of time. The scope of this report and the services are accordingly factually limited by these circumstances.

Where assessments of works or costs identified in this report are made, such assessments are based upon the information available at the time and where appropriate are subject to further investigations or information which may become available.

SC disclaim any undertaking or obligation to advise any person of any change in any matter affecting the report, which may come or be brought to SC’s attention after the date of the report.

Certain statements made in the report that are not historical facts may constitute estimates, projections or other forward-looking statements and even though they are based on reasonable assumptions as of the date of the report, such forward-looking statements by their nature involve risks and uncertainties that could cause actual results to differ materially from the results predicted. SC specifically does not guarantee or warrant any estimate or projections contained in this report.

Costs may vary outside the ranges quoted. Whilst cost estimates are provided for individual issues in this report these are based upon information at the time which can be incomplete. Cost estimates for such issues may therefore vary from those provided. Where costs are supplied, these estimates should be considered in aggregate only. No reliance should be made in relation to any division of aggregate costs, including in relation to any issue, site or other subdivision.

No allowance has been made for changes in prices or exchange rates or changes in any other conditions which may result in price fluctuations in the future. Where assessments of works or costs necessary to achieve compliance have been made, these are based upon measures which, in SC’s experience, could normally be negotiated with the relevant authorities under present legislation and enforcement practice, assuming a pro-active and reasonable approach by site management.

Forecast cost estimates do not include such costs associated with any negotiations, appeals or other non- technical actions associated with the agreement on measures to meet the requirements of the authorities, nor are potential business loss and interruption costs considered that may be incurred as part of any technical measures.

## Copyright

© This Report is the copyright of SC. Any unauthorised reproduction or usage by any person other than the addressee is strictly prohibited.

## 1. INSTRUCTIONS AND BRIEF

- 1.1 This report has been prepared for the proposed development which involves the construction of a new property including 5 new residential flats at 10A Oakhill Avenue, London, NW3 7RE. It assesses the daylight, sunlight and overshadowing effect of the proposed development on the houses at 10 Oakhill Avenue and 8 Oakhill Avenue. The assessment is undertaken in accordance with **BRE 209 Digest: Site Layout Planning For Daylight and Sunlight – A Guide to Good Practice**.
- 1.2 The existing & proposed application (in AutoCAD format and PDF) drawings were provided by **Martin Evans Architects** on the 03<sup>th</sup> February 2014 and have been used in preparing this report.
- 1.3 The study has been undertaken by constructing a 3D IES model of the existing and proposed site and surrounding buildings in order to analyse the daylight, sunlight and overshadowing impact of the new development on the affected facades. The assessment is based on 2D AutoCAD drawings.

## 2. PLANNING POLICY

- 2.1 There are no national or local policies specifically relating to daylight, sunlight or overshadowing.

## 3. GUIDANCE DOCUMENTS

### 3.1. Building Research Establishment (BRE) Report (BRE 209): 'Site Layout Planning for Daylight and Sunlight: A Guide to Good Practice' Second Edition (2011)

The Second Edition of the report replaces the 1991 document of the same name and come into effect from October 2011.

It is important to note that the introduction to the report stresses that the document is provided for guidance purposes only and it is not intended to be interpreted as a strict and rigid set of rules. It also recommends that it may be appropriate to adopt a flexible approach and alternative target values in dealing with "special circumstances" for example "in a historic city centre, or in an area with modern high-rise buildings, a higher degree of obstruction may be unavoidable if new developments are to match the height and proportions of existing buildings." This is amplified by the following extracts from the introduction (P1, para. 6) and Section 2.2:

*"The advice given here is not mandatory and this document should not be seen as an instrument of planning policy; its aim is to help rather than constrain the designer. Although it gives numerical guidelines, these should be interpreted flexibly because natural lighting is only one of many factors in site layout design..."* (P1, para. 1.6)

*"In special circumstances the Developer or Planning Authority may wish to use different target values."* (P1, para. 1.6)

*"Note that numerical values given here are purely advisory. Different criteria may be used, based upon the requirements for daylight in an area viewed against other site layout constraints. Another important issue is whether the existing building is itself a good neighbour, standing a reasonable distance from the boundary and taking no more than its fair share of light".* (P7 para.2.2.3)

The examples given in the report can be applied to any part of the country: suburban, urban and rural areas. The inflexible application of the target values given in the Report may make reaching the BRE criteria difficult in a tight, urban environment where there is unlikely to be the same expectation of daylight and sunlight amenity as in a suburban or rural environment.

## 4. ASSESSMENT METHODOLOGY

### 4.1 General

This report assesses the potential impact of the proposed development in relation to daylight, sunlight and overshadowing on the houses at 10 Oakhill Avenue and 8 Oakhill Avenue. Specifically, it takes into consideration the possible effect and influence that the new development would have on the properties.

18 target surfaces (S1 to S16) and 2 amenity areas (A1 to A2) for external levels of daylight (Vertical Sky Components), sunlight availability and overshadowing (as shown in section 3.1 in Appendix) have been selected based on anticipated worse case impact judged from professional experience and also following guidance within the BRE guidelines 'Site Layout Planning for Daylight and Sunlight'.

The IES Virtual Environment modelling software utilised for the compilation of this report has been accredited by CIBSE and acknowledged by the BRE as a suitable software tool for undertaking daylight, sunlight and overshadowing assessments in accordance with the BRE Good Practice guidelines. The specific IES software modules utilised for this assessment are the following:

- **ModelIT:** enables you to create a 3D 'Virtual Environment' model without CAD data, or alternatively allows you to create a 3D model from 2D CAD data. Interfaces with ACADRevit and Google SketchUp.
- **Radiance IES:** is a detailed 3D simulation tool designed to predict daylight and electric light levels, and the appearance of a space prior to construction. Vertical Sky Components and Average Daylight Factors can be simulated using Radiance.
- **SunCast:** produces visual, graphical and numerical information that can be used to explain to colleagues, clients and planning authorities how the sun impacts on and inside the building, and on the site.

### 4.2 BRE Digest 209: 'Site Layout Planning for Daylight and Sunlight'

This section provides a brief description of the calculating methods for the 'Daylight', 'Sunlight' and 'Overshadowing to Gardens and Open Spaces' criteria presented in BRE Digest 209.

#### 4.2.1 Daylight

The BRE guidelines 'Site Layout Planning for Daylight and Sunlight' incorporate two main methods of calculating daylight, namely: the Vertical Sky Component (VSC) method and the Average Daylight Factor (ADF) method. In this assessment, VSC is selected. The VSC method measures the amount of light available on the outside plane at the centre of a window, as a ratio (expressed as a percentage) of the amount of total unobstructed sky visible following the introduction of visible barriers such as buildings. More details on the numerical criteria for the VSC method are presented in section 5.

#### 4.2.2 Sunlight

The BRE guidelines 'Site Layout Planning for Daylight and Sunlight' recommends that access to sunlight is assessed with a development proposal. Potential impacts on available sunlight were assessed using the BRE's Annual Probable Sunlight Hours (APSH) method. This method involves the forecasting of sunlight availability throughout the year and in the winter months, for the main window of each habitable room that faces within 90° of due south. The buildings surrounding the site that do not contain windows that face within 90° of due south has been excluded from the sunlight assessment. To provide a concise and comprehensive indicative analysis, the closest surfaces within the surrounding properties

were analysed for both daylight and sunlight. Their locations are shown in section 3.1 in Appendix. More details on the numerical criteria for the APSH method are presented in section 5.

#### 4.2.3 Overshadowing to Gardens and Open Spaces

The BRE guideline, 'Site Layout Planning for Daylight and Sunlight' provides sunlight availability criteria for open spaces. In particular it gives guidance for calculating any areas of open space that may be in permanent shadow on 21 March.

In summary the BRE document states:

"It is suggested that, for it to appear adequately sunlit throughout the year, at least half of a garden or amenity area should receive at least two hours of sunlight on 21st March. If as a result of new development, an existing garden or amenity area does not meet these guidelines, and the area which can receive two hours of sun on 21st March is less than 0.8 times its former value, then the loss of sunlight is likely to be noticeable".

For this assessment the IES 'Virtual Environment' SunCast software package has been used. A 3D model of the proposed and surrounding buildings was first modelled and the sunlight-tracking feature within the software used to view the shadow results. The study illustrated the extent of the shadow on the key date:

- March 21 (Spring Equinox)

## 5. BRE DIGEST 209 SIGNIFICANT CRITERIA

### 5.1 Daylight

The daylight criteria given within the BRE guidelines have been used as a basis to assess the Development's potential impacts:

*1) The daylighting is considered not to be substantially affected when the Vertical Sky Component (VSC) measured at the centre of a window is >27%. A window may be adversely affected if the vertical sky component (VSC) measured at the centre of the window is less than 27% and less than 0.8 times its former value.*

In the assessment, the reduction between existing and proposed situations is expressed as a percentage, where a change in daylight levels above 20% equates to a figure of less than 0.8 times its former value.

### 5.2 Sunlight

The daylight criteria given within the BRE guidelines have been used as a basis to assess the Development's potential impacts:

*A window\* may be adversely affected if a point at the centre of the window\* receives in the year less than 25% of the annual probable sunlight hours including at least 5% of the annual probable sunlight hours during the winter months (21 September to 21 March).*

Assessment points that do not meet the above criteria require further consideration to show the impact significance likely to be incurred. Like the daylight assessment, three levels of impact significance have been used and are allocated at 20% intervals of reduction, which are:

- *Minor adverse impact: An APSH(Annual Probable Sunlight Hours) below 25% but above 20%, of which, the APSH in winter months is below 5% but above 4% Or Either result is less than 30% of its former value*

- *Moderate adverse impact: An APSH below 20% but above 16%, of which, the APSH in winter months is below 4% but above 3% Or Either result is less than 40% of its former value*
- *Substantial adverse impact: An APSH below 16% of which, the APSH in winter months is below 3% Or Either result is greater than 50% of its former value*

### 5.3 Overshadowing to Gardens and Open Spaces

The daylight criteria given within the BRE guidelines are as follow:

"It is suggested that, for it to appear adequately sunlit throughout the year, at least half of a garden or amenity area should receive at least two hours of sunlight on 21st March. If as a result of new development, an existing garden or amenity area does not meet these guidelines, and the area which can receive two hours of sun on 21st March is less than 0.8 times its former value, then the loss of sunlight is likely to be noticeable".

Assessment points that do not meet the above criteria require further consideration to show the level of impact likely to be incurred. Again, three levels of impact significance against the areas of permanent shading have been used and are allocated at 20% intervals, which are:

- *Minor adverse impact: An area above 40% but below 48%*
- *Moderate adverse impact: An area above 48% but below 58%*
- *Substantial adverse impact: An area above 58%*



## 5.4 Criteria for Assessing Daylight / Sunlight / Overshadowing Effects

Magnitude of Effect	Criteria		
<b>Major Beneficial</b>	An improvement ratio > 1.3 of the baseline value		
<b>Moderate Beneficial</b>	An improvement ratio $\leq 1.3$ and > 1.1 of the baseline value		
<b>Minor Beneficial</b>	An improvement ratio $\leq 1.1$ and > 1.0 of the baseline value		
<b>Negligible</b>	Daylight	Sunlight	Overshadowing
	A VSC of 27% or above in the proposed scenario with adequate daylight distribution	An APSH of 25%, of which 5% are in the winter months.	50% of any amenity areas receiving at least 2 hours of direct sunlight on 21st March
	Or	Or	Or
	A reduction ratio <1.0 and $\geq 0.8$ of the baseline value	A reduction ratio <1.0 and $\geq 0.8$ of the baseline value	A reduction ratio <1.0 and $\geq 0.8$ of the baseline value
<b>Minor Adverse</b>	A reduction ratio <0.8 and $\geq 0.7$ of the baseline value		
<b>Moderate Adverse</b>	A reduction ratio <0.7 and $\geq 0.6$ of the baseline value		
<b>Major Adverse</b>	A reduction ratio <0.6 of the baseline value		

## 6. CONCLUSION

6.1 The foreword to BS 8206-2:1992 states that:

*“The aim of the standard is to give guidance to architects, builders and others who carry out lighting design. It is recognised that lighting is only one of many matters that influence fenestration. These include other aspects of environmental performance (such as noise, thermal equilibrium and the control of energy use), fire hazards, constructional requirements, the external appearance and the surroundings of the site. The best design for a building does not necessarily incorporate the ideal solution for any individual function. For this reason, careful judgement should be exercised when using the criteria given in the standards for other purposes, particularly town planning control.”*

6.2 Daylight

The daylight results are presented in section 5 in Appendix. The images and results in section 5 of the Appendix show and compare the external levels of daylight (VSC – Vertical Sky Components) on the facades with and without the proposed development. The assessment evaluates the impact on the facades from the new development.

**A summary of results is displayed in the table below:**

Daylight Assessment				
Target Surface	VSC's (pre-development) <sup>(1)</sup>	VSC's >27% (post-development)	Ratio	Results
Surface 1 10 Oakhill Avenue GF	49.07	48.83	0.99	Negligible
Surface 2 10 Oakhill Avenue FF	49.90	49.70	0.99	Negligible
Surface 3 10 Oakhill Avenue SF	89.10	88.60	0.99	Negligible
Surface 4 10 Oakhill Avenue GF	37.35	37.00	0.99	Negligible
Surface 5 10 Oakhill Avenue FF	42.37	42.17	0.99	Negligible
Surface 6 10 Oakhill Avenue SF	83.3	81.8	0.98	Negligible
Surface 7 10 Oakhill Avenue SF	78.1	76.5	0.98	Negligible
<b>Surface 7A 10 Oakhill Avenue GF</b>	<b>47.92</b>	<b>47.92</b>	<b>1</b>	<b>No impact</b>
Surface 7B 10 Oakhill Avenue FF	48.03	47.92	0.99	Negligible
<b>Surface 8 8 Oakhill Avenue GF</b>	<b>79.70</b>	<b>80.60</b>	<b>1.01</b>	<b>Minor beneficial</b>
<b>Surface 9 8 Oakhill Avenue FF</b>	<b>25.02</b>	<b>28.45</b>	<b>1.13</b>	<b>Moderate beneficial</b>
<b>Surface 10 8 Oakhill Avenue SF</b>	<b>39.60</b>	<b>40.05</b>	<b>1.01</b>	<b>Minor beneficial</b>
Surface 11 8 Oakhill Avenue GF	75.00	74.30	0.99	Negligible
Surface 12 8 Oakhill Avenue FF	48.30	46.25	0.95	Negligible
Surface 13 8 Oakhill Avenue SF	47.80	47.20	0.98	Negligible

Surface 14 8 Oakhill Avenue GF	89.40	89.20	0.99	Negligible
Surface 15 8 Oakhill Avenue FF	35.35	32.95	0.93	Negligible
Surface 16 8 Oakhill Avenue SF	39.50	37.92	0.96	Negligible
<b>Average</b>	<b>55.82</b>	<b>55.41</b>	<b>0.99</b>	<b>Negligible</b>

Note: For location of target surfaces, see Appendix section 3.2 "Proposed Site Layout"

(1): This is the calculated Vertical Sky Component (VSC) on the facades without the proposed development

As it can be seen on the table above, none of the surfaces will be adversely impacted by the proposed development. Furthermore surfaces 8, 9 and 10 show beneficial impacts.

It should be noted that the values provided in the BRE 209 are for guidance only.

### 6.3 Sunlight

Where necessary (as defined in the Assessment Methodology section of this report) Annual Probable Sunlight Hours (APSH) tests have been undertaken with the results presented in section 6 in the Appendix.

The table of results, in section 6 of the Appendix, show the likely levels of sunlight with and without the proposed development.

A summary of the results is presented in the following table:

Sunlight Assessment						
Surface No	Total (APSH)% criterion >25% <sup>(2)</sup>		Winter Months (APSH) % Sept-March criterion >5% <sup>(3)</sup>		BRE 209 Guidelines	
	Existing %	Proposed %	Existing %	Proposed %	Ratio	Assessment Result
Surface 1 10 Oakhill Avenue GF	71.95	71.95	84.54	84.54	1	No impact
Surface 2 10 Oakhill Avenue FF	73.90	73.90	87.27	87.27	1	No impact
Surface 3 10 Oakhill Avenue SF	74.67	74.99	87.27	87.27	1.00	Minor beneficial
Surface 4 10 Oakhill Avenue GF	41.88	42.11	38.35	38.35	1.00	Minor beneficial
Surface 5 10 Oakhill Avenue FF	50.79	51.06	47.16	47.16	1.00	Minor beneficial
Surface 6 10 Oakhill Avenue SF	71.00	71.86	80.5	80.5	1.01	Minor beneficial
Surface 7 10 Oakhill Avenue SF	28.14	24.06	19.89	19.46	0.855	Negligible
Surface 7A 10 Oakhill Avenue GF	0.53	0.53	0.00	0.00	1	No impact
Surface 7B 10 Oakhill Avenue FF	3.18	3.18	0.00	0.00	1	No impact
Surface 8 8 Oakhill Avenue GF	69.16	69.31	81.67	82.06	1.00	Minor beneficial

<b>Surface 9</b> 8 Oakhill Avenue FF	<b>70.80</b>	<b>70.80</b>	<b>84.05</b>	<b>84.06</b>	<b>1</b>	<b>No impact</b>
<b>Surface 10</b> 8 Oakhill Avenue SF	<b>74.65</b>	<b>74.65</b>	<b>87.27</b>	<b>87.27</b>	<b>1</b>	<b>No impact</b>
<b>Surface 11</b> 8 Oakhill Avenue GF	<b>33.93</b>	<b>41.08</b>	<b>25.26</b>	<b>34.19</b>	<b>1.21</b>	<b>Moderate beneficial</b>
<b>Surface 12</b> 8 Oakhill Avenue FF	<b>56.15</b>	<b>57.68</b>	<b>57.18</b>	<b>58.69</b>	<b>1.02</b>	<b>Minor beneficial</b>
Surface 13 8 Oakhill Avenue SF	54.78	54.2	69.12	67.63	0.98	Negligible
Surface 14 8 Oakhill Avenue GF	23.00	21.55	15.46	11.67	0.93	Negligible
<b>Surface 15</b> 8 Oakhill Avenue FF	<b>24.65</b>	<b>24.65</b>	<b>12.73</b>	<b>12.73</b>	<b>1</b>	<b>No impact</b>
<b>Surface 16</b> 8 Oakhill Avenue SF	<b>24.65</b>	<b>24.65</b>	<b>12.73</b>	<b>12.73</b>	<b>1</b>	<b>No impact</b>
<b>Average</b>	<b>47.10</b>	<b>47.34</b>	<b>49.47</b>	<b>49.75</b>	<b>1.00</b>	<b>Minor beneficial</b>

Note: For location of target surfaces, see Appendix section 3.2 "Proposed Site Layout"

(2): Total Annual Probable Sunlight hours (APSH) that are higher than the 25% guidance value.

(3): Winter months annual probable sunlight hours that are higher than the 5% guidance value.

As it can be seen on the table above, none of the surfaces will be adversely impacted by the proposed development. Furthermore surfaces 3 to 6, 8, 11 and 12 show beneficial impacts.

It should be noted that the values provided in the BRE 209 are for guidance only.

#### 6.4 Overshadowing

The following results represent the cumulative overshadowing impacts of the proposed development.

As identified from the Google Earth plan, two existing gardens are located at the rear of 8 Oakhill Avenue and 10 Oakhill Avenue. The areas are indicated on the figure in section 4 of the Appendix.

The hourly images showing the extent of shadows produced in the proposed situations for the open areas are presented in section 7 of the Appendix. In accordance with the BRE guidelines, overshadowing has been assessed during times of the day where the sun's altitude is above 10° (from 7:30am to 17:00pm).

**A summary of results for amenity areas are shown in table below:**

<b>Overshadowing assessment (with proposed development) from 7:30 am to 17:00 pm</b> <b>% of area receiving sunlight on 21st March</b>				
<b>Amenity area</b>	<b>Pre-development</b>	<b>Post-development</b>	<b>Ratio and assessment result</b>	
<b>A1 - 10 Oakhill</b>	72.02	70.00	0.97	Negligible
<b>A2 - 8 Oakhill</b>	<b>89.67</b>	<b>89.67</b>	<b>1</b>	<b>No impact</b>

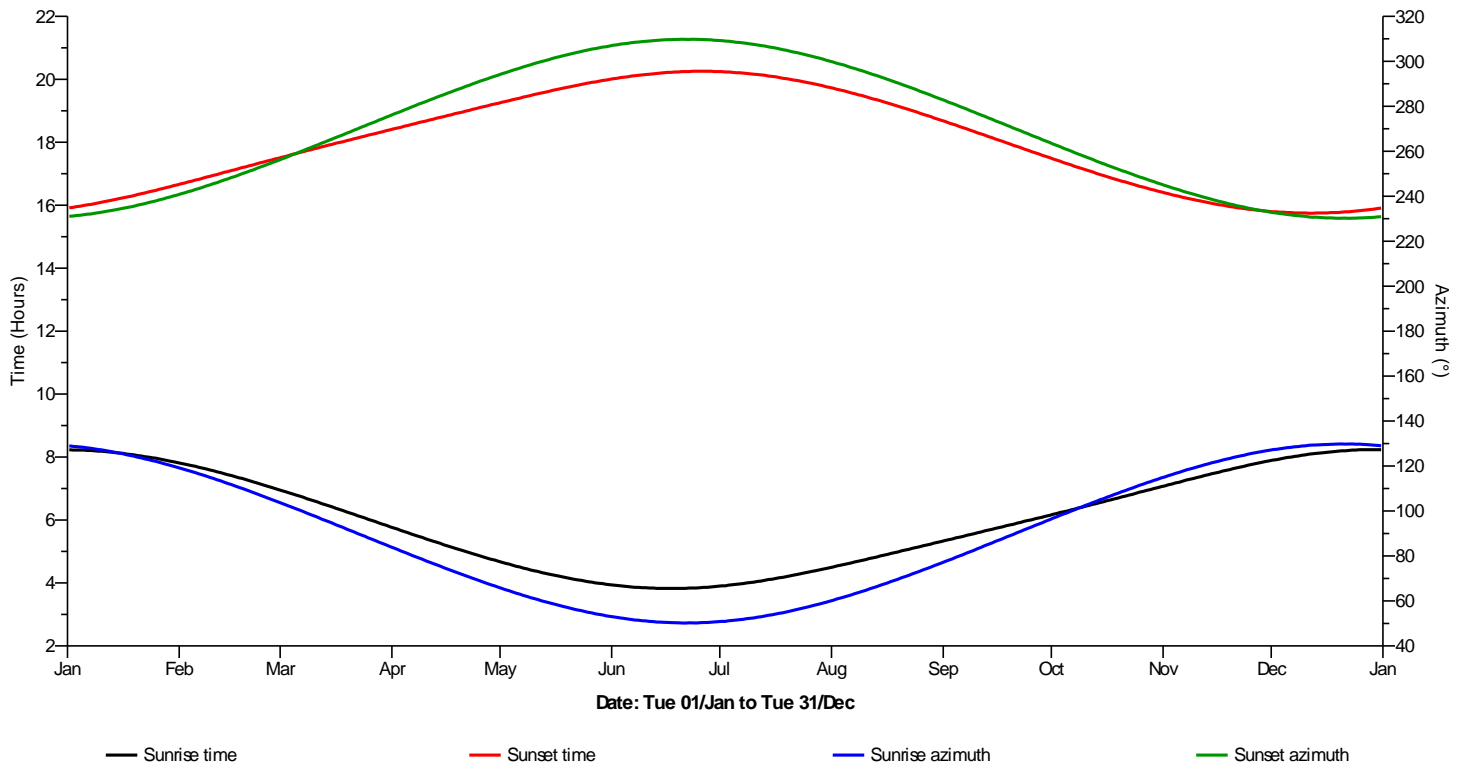
Note: For location of target surfaces, see Appendix section 4 "Model Images"

As it can be seen from the above table, none of the gardens will be adversely impacted by the proposed development.

It should be noted that the values provided in the BRE 209 are for guidance only.

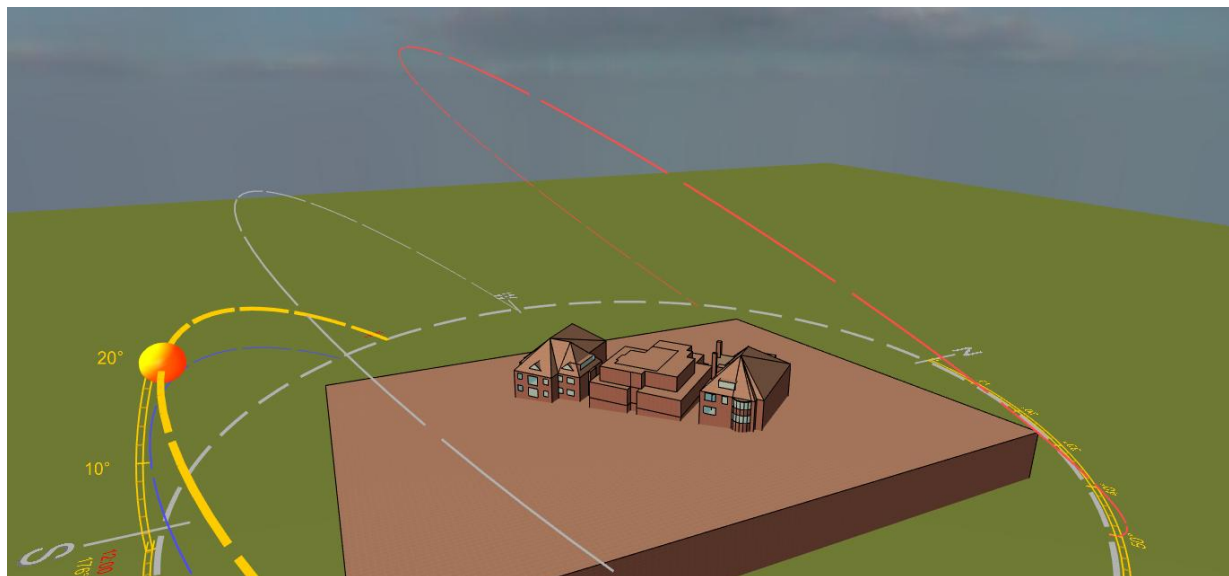
## 7. Appendix:

### 1. Sunrise and Sunset Time



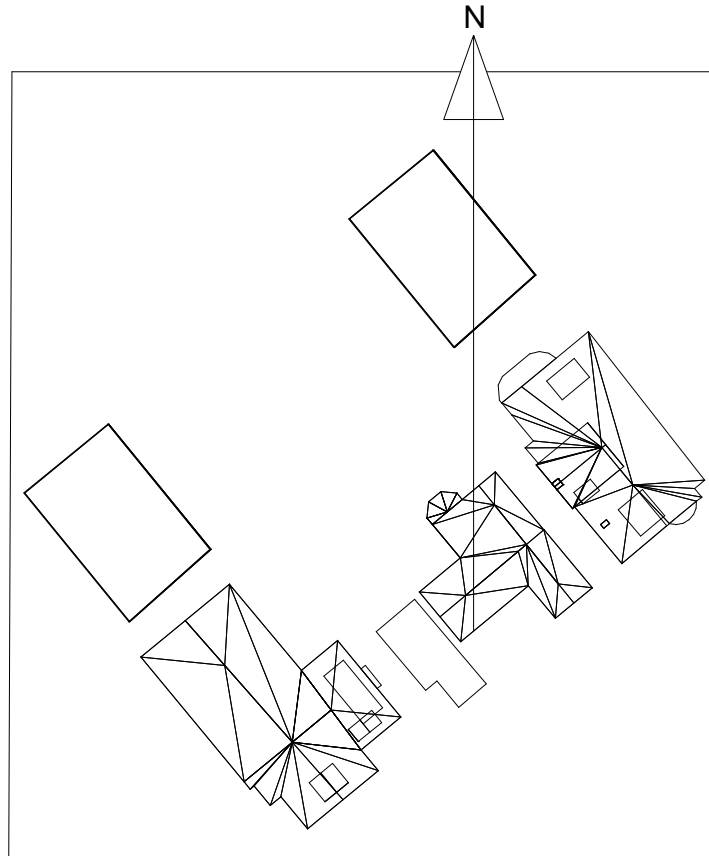
### 2. Suntrace

The red line represents the sun's path during June.  
The yellow line represents the sun's path during March/September.  
The blue line represents the sun's path during December.

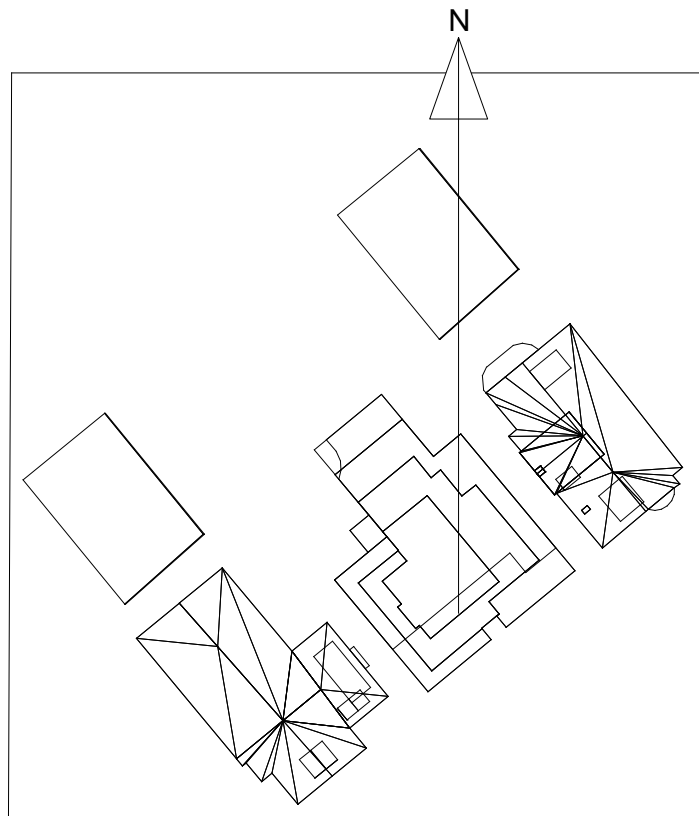


### 3. Site Plan and location:

#### 3.1 Existing Site Layout

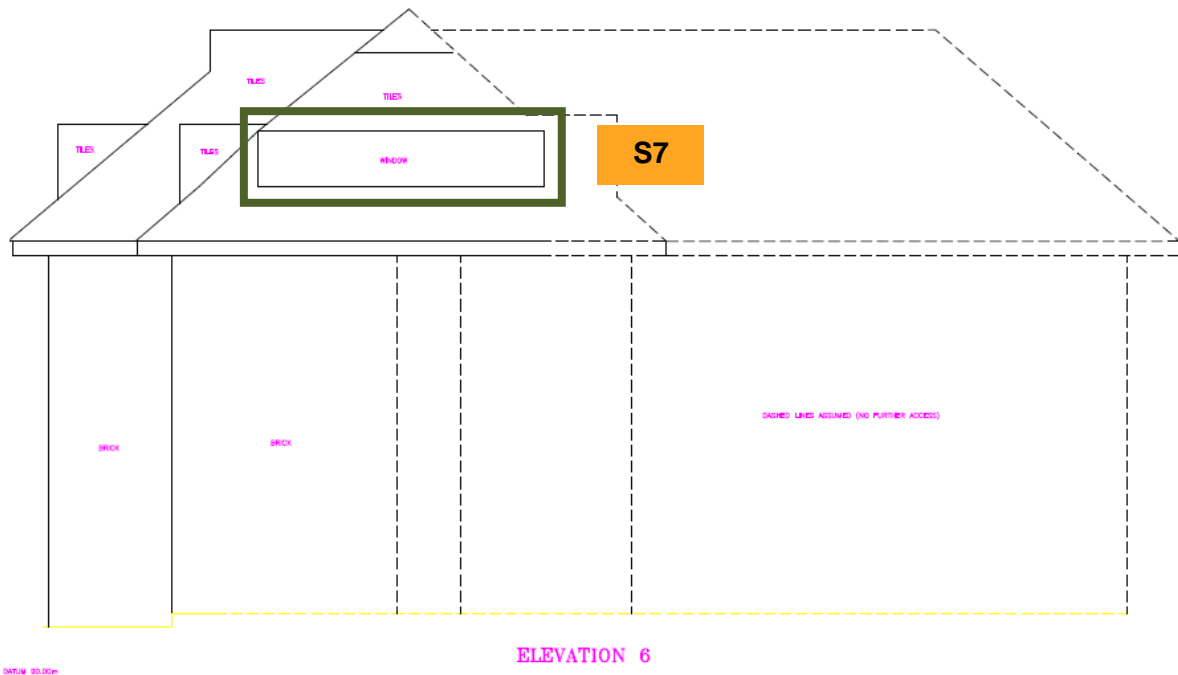


#### 3.2 Proposed Site Layout





**10 Oakhill Avenue, Front**

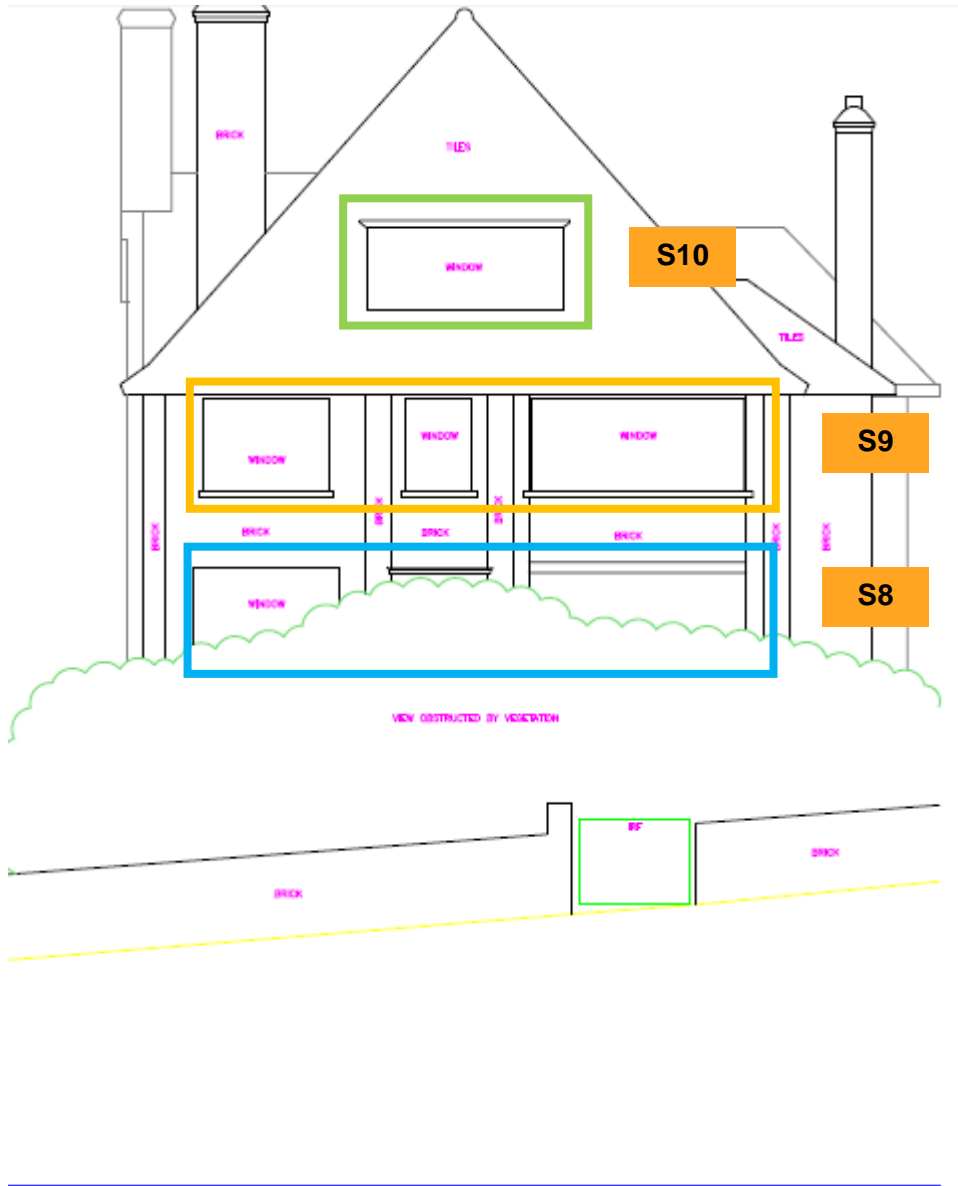


**10 Oakhill Avenue, Side**

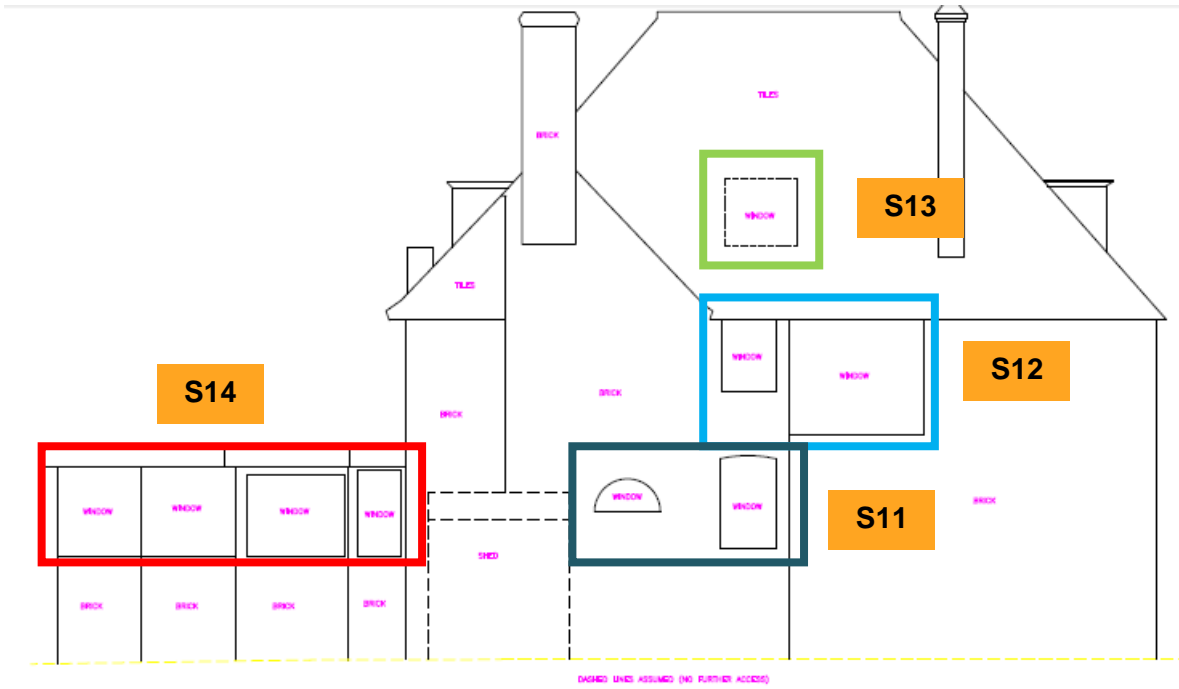


**10 Oakhill Avenue, Rear**



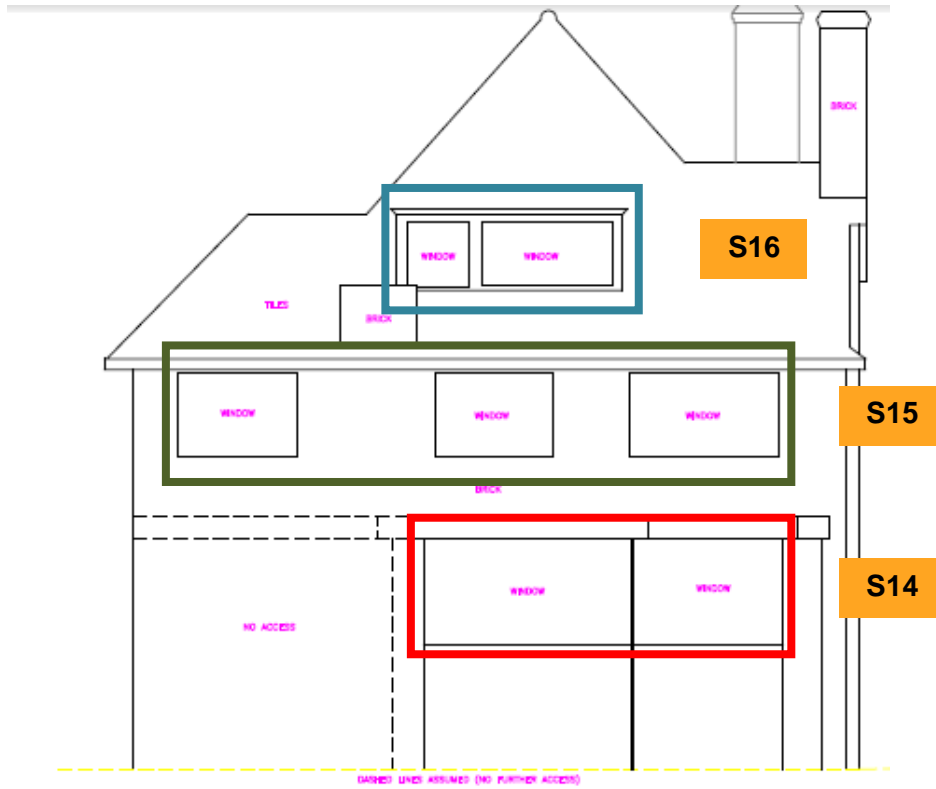


**8 Oakhill Avenue, Front**



ELEVATION 5

**8 Oakhill Avenue, Side**

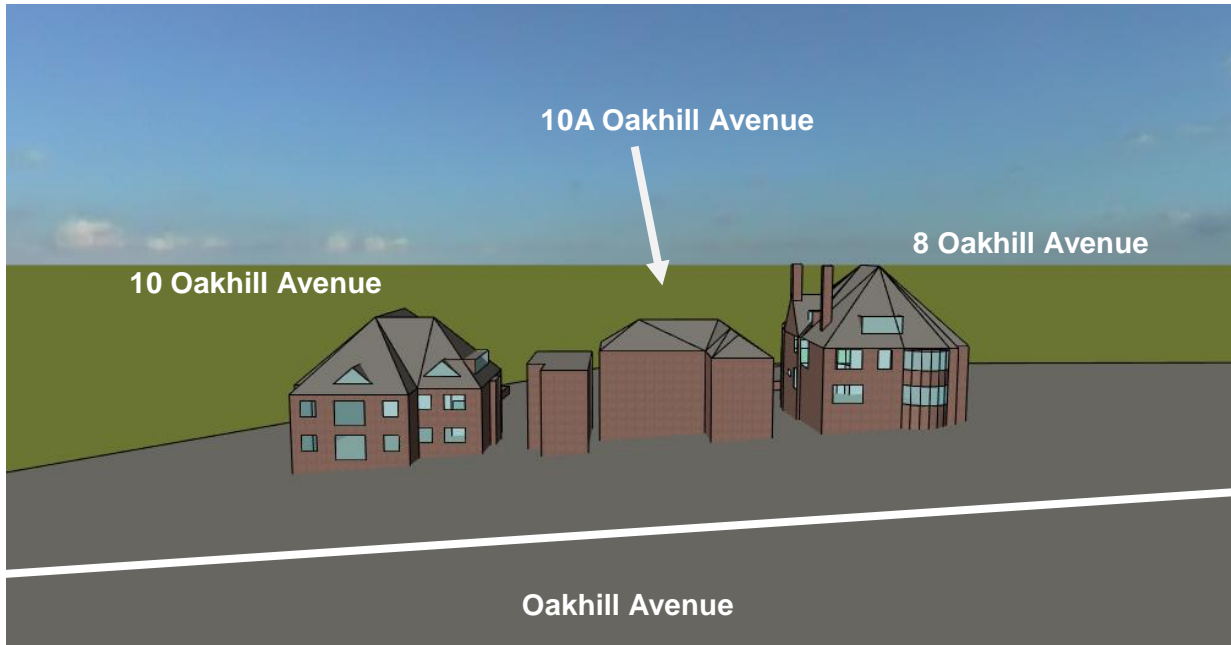


SATNAV: 51.5516

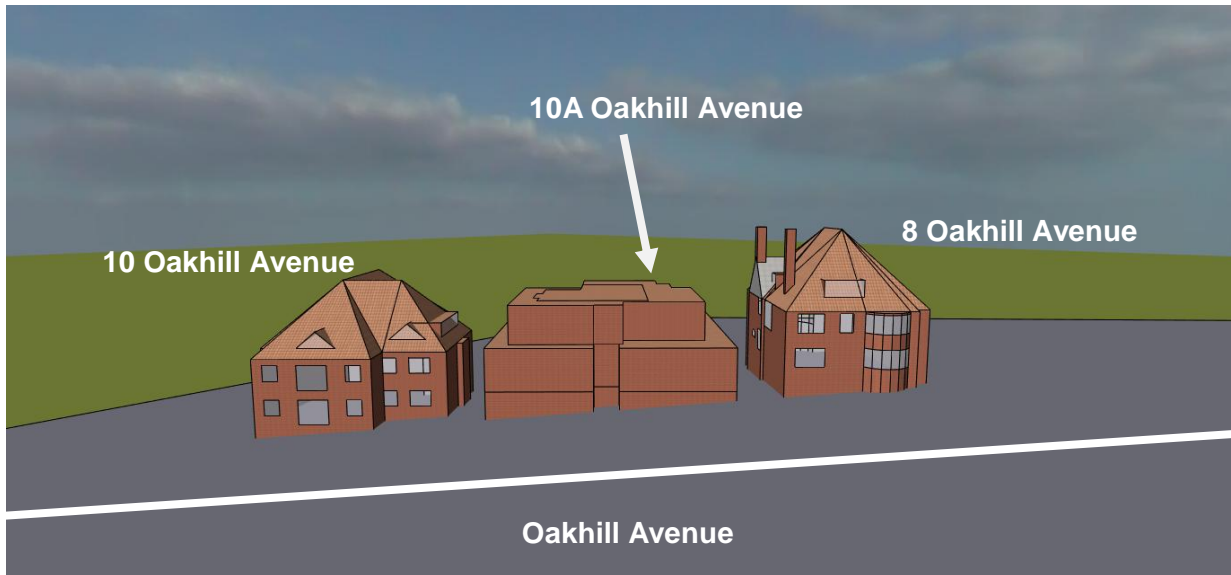
**8 Oakhill Avenue, Rear**

<b>Location</b>	<b>10A Oakhill Avenue, NW3 7RE</b>
<b>Latitude (°)</b>	51.55 N
<b>Longitude (°)</b>	0.188 W

**4. Model Images:**



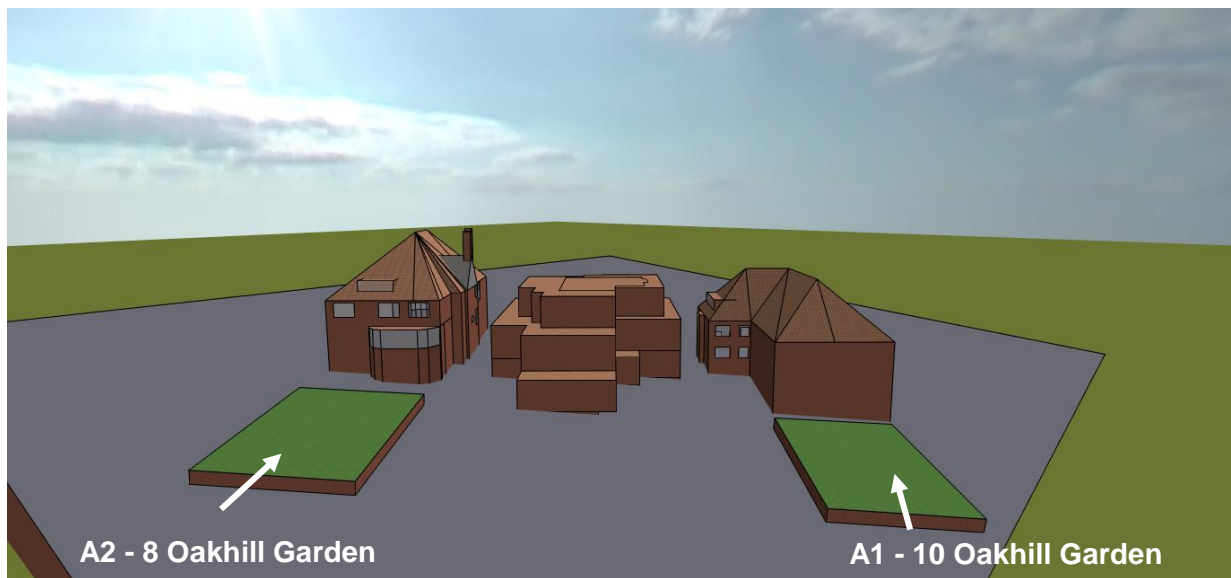
**Existing model**



**Proposed model**



**Existing model**



**Proposed model**

## 5. Daylight Results

Surface 1 - 10 Oakhill Avenue GF

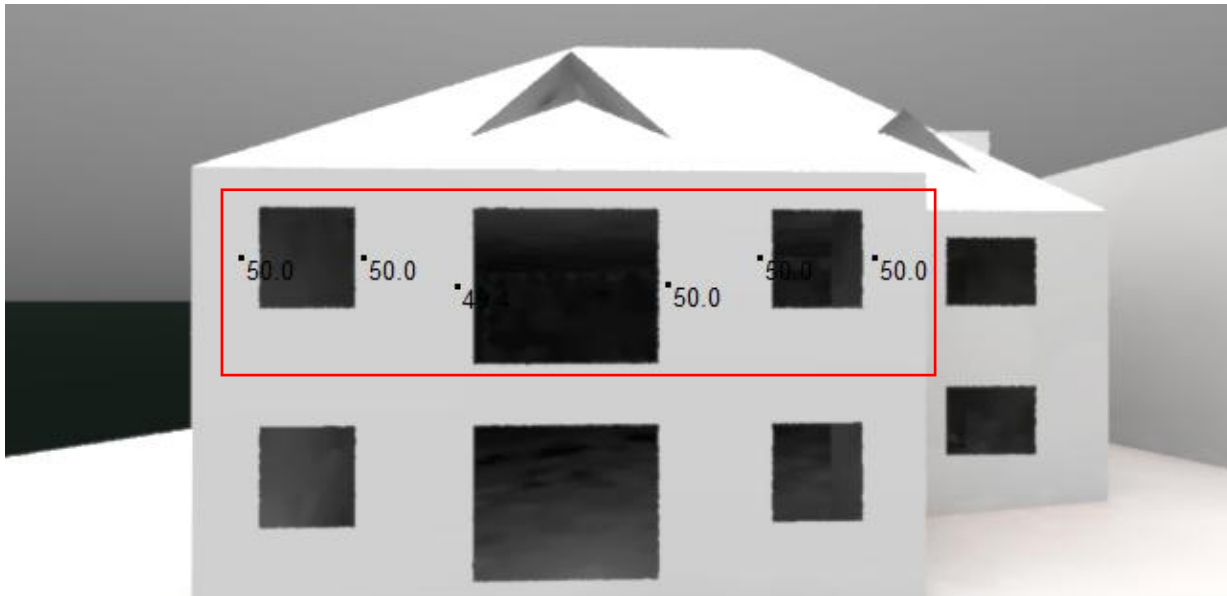


Existing						
Sample of vertical sky components (VSC's)						Average
49.5	49.5	49.5	48.5	48.7	48.7	49.07

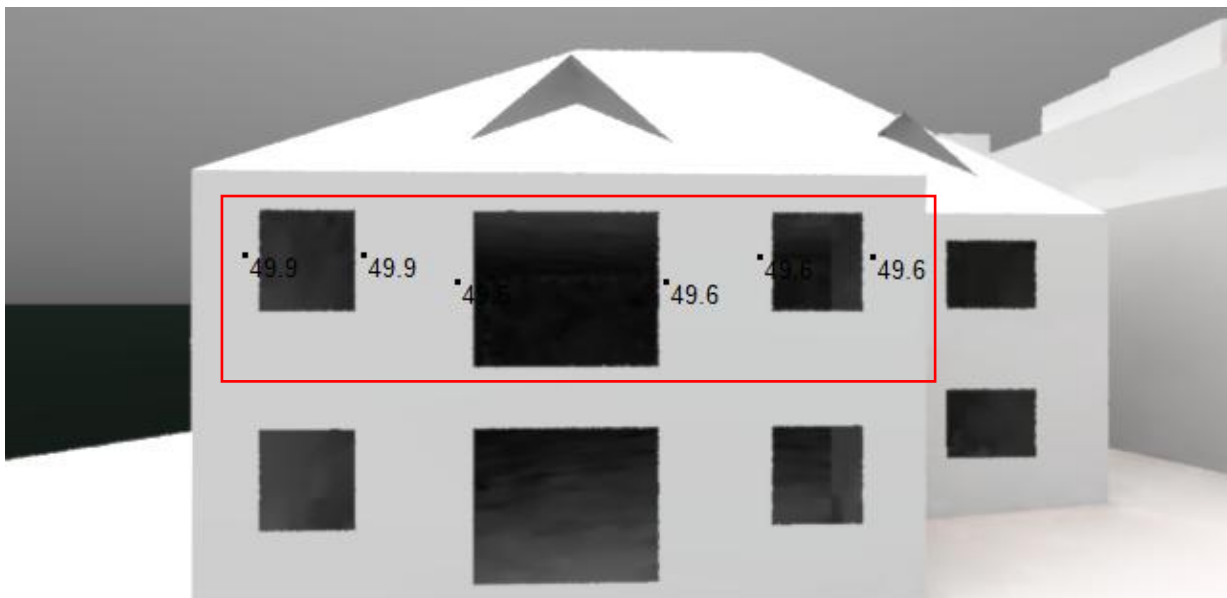


Proposed						
Sample of vertical sky components (VSC's)						Average
49.3	49.3	49.3	48.3	48.3	48.5	48.83
<b>VSC's &gt; 27%</b>					48.83	
<b>Within 80%?</b>					99.5%	

Surface 2 - 10 Oakhill Avenue FF



Existing						
Sample of vertical sky components (VSC's)						Average
50.0	50.0	49.4	50.0	50.0	50.0	49.9



Proposed						
Sample of vertical sky components (VSC's)						Average
49.9	49.9	49.6	49.6	49.6	49.6	49.7
<b>VSC's &gt; 27%</b>					49.7	
<b>Within 80%?</b>					99.6%	

Surface 3 - 10 Oakhill Avenue SF



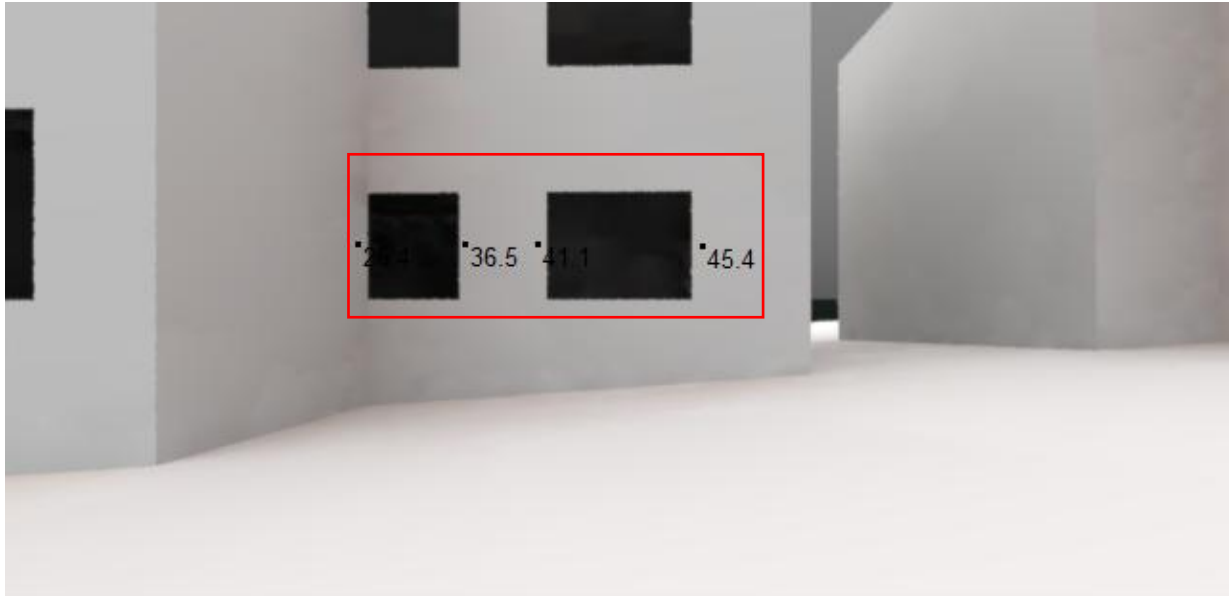
Existing	
Sample of vertical sky components (VSC's)	Average
89.1	89.1



Proposed	
Sample of vertical sky components (VSC's)	Average
88.6	88.6
VSC's > 27%	88.6
Within 80%?	99.4%



Surface 4 - 10 Oakhill Avenue GF

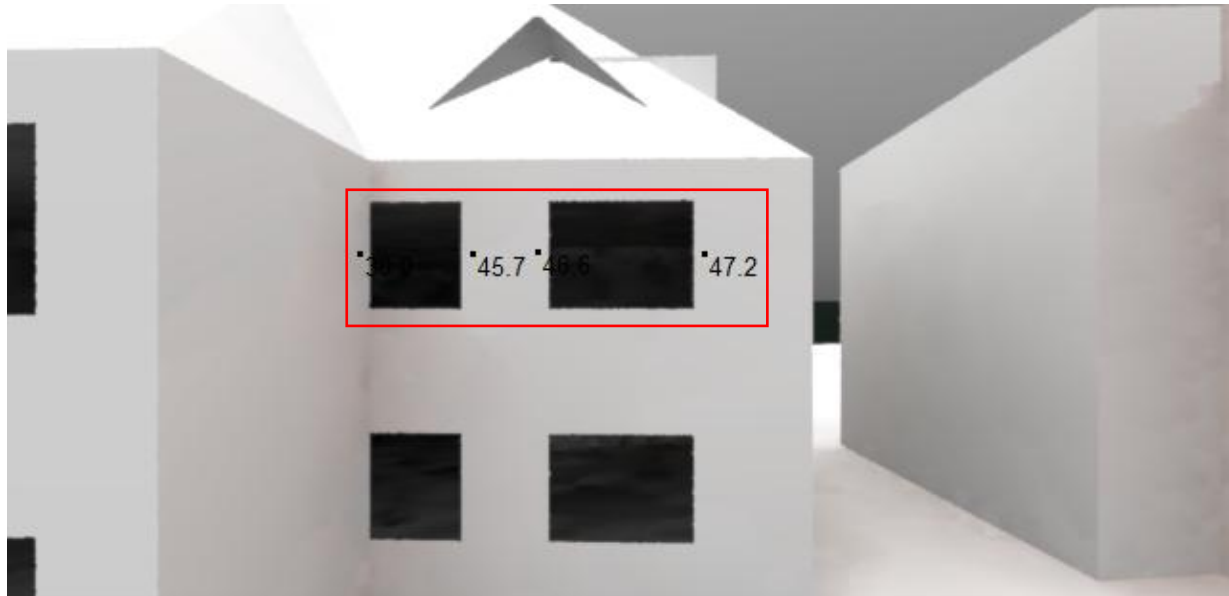


Existing				
Sample of vertical sky components (VSC's)				Average
26.4	36.5	41.1	45.4	37.35

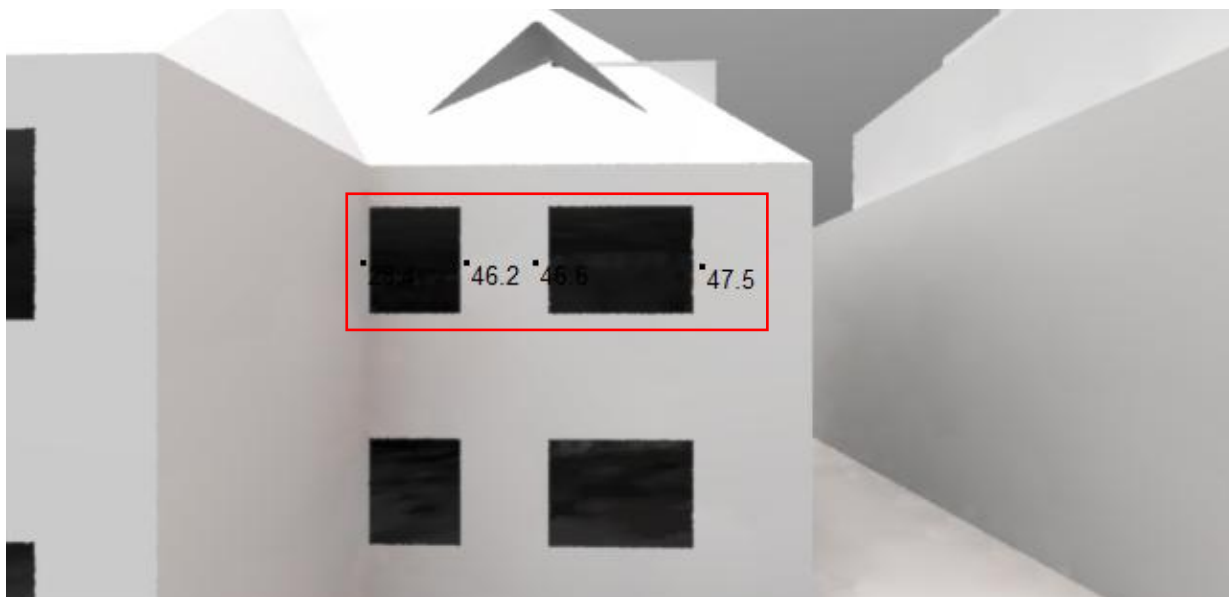


Proposed				
Sample of vertical sky components (VSC's)				Average
26.0	36.6	40.3	45.1	37.00
<b>VSC's &gt; 27%</b>				37.00
<b>Within 80%?</b>				99.1%

Surface 5 - 10 Oakhill Avenue FF



Existing				
Sample of vertical sky components (VSC's)				Average
30.0	45.7	46.6	47.2	42.37



Proposed				
Sample of vertical sky components (VSC's)				Average
28.4	46.2	46.6	47.5	42.17
<b>VSC's &gt; 27%</b>				42.17
<b>Within 80%?</b>				99.5%

Surface 6 - 10 Oakhill Avenue SF

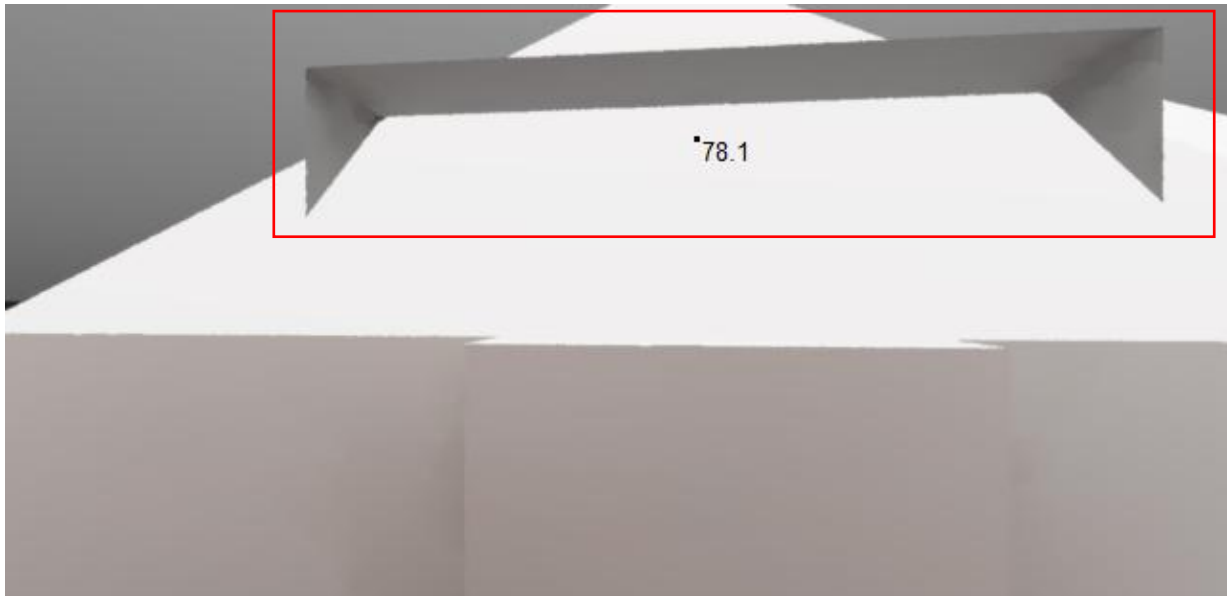


Existing	
Sample of vertical sky components (VSC's)	Average
83.3	83.3

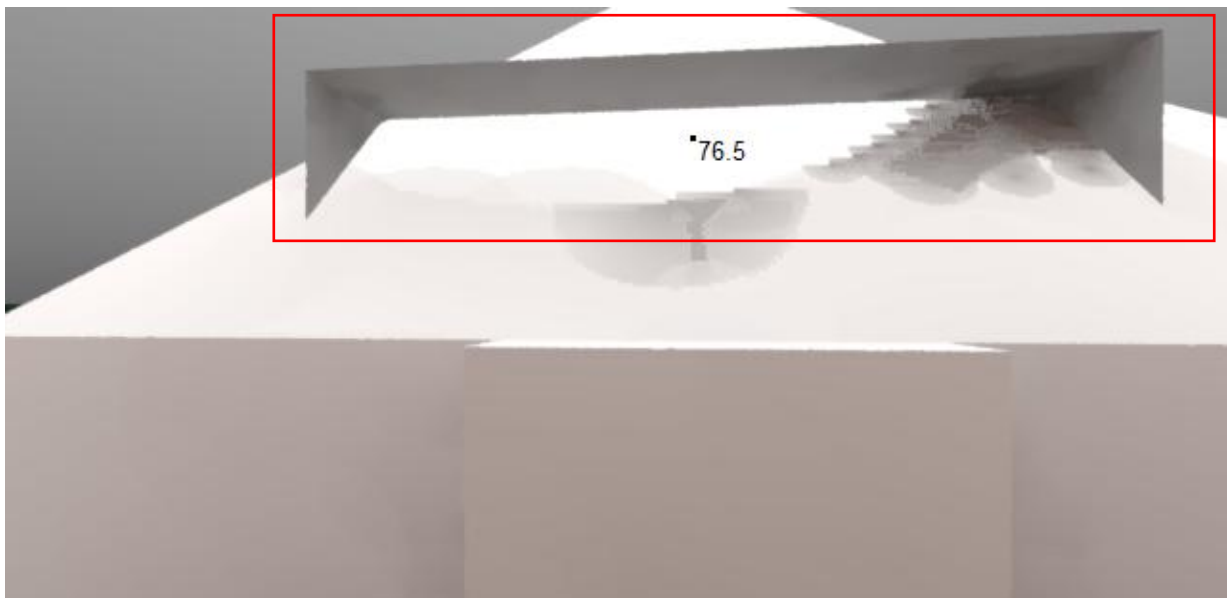


Proposed	
Sample of vertical sky components (VSC's)	Average
81.8	81.8
VSC's > 27%	81.8
Within 80%?	98.2%

Surface 7 - 10 Oakhill Avenue SF



Existing	
Sample of vertical sky components (VSC's)	Average
78.1	78.1



Proposed	
Sample of vertical sky components (VSC's)	Average
76.5	76.5
VSC's > 27%	76.5
Within 80%?	97.9%

Surface 7A - 10 Oakhill Avenue GF



Existing				
Sample of vertical sky components (VSC's)				Average
41.3	37.4	34.2	28.5	35.35

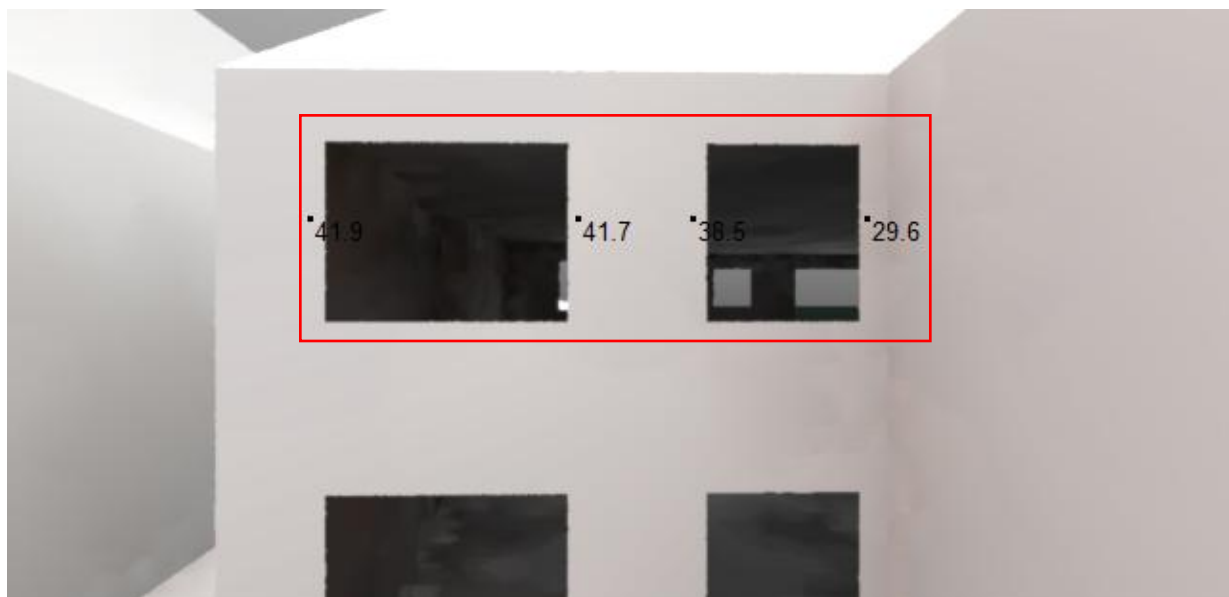


Proposed				
Sample of vertical sky components (VSC's)				Average
37.9	34.9	32.0	26.9	32.95
<b>VSC's &gt; 27%</b>				32.95
<b>Within 80%?</b>				93.2%

Surface 7B - 10 Oakhill Avenue FF

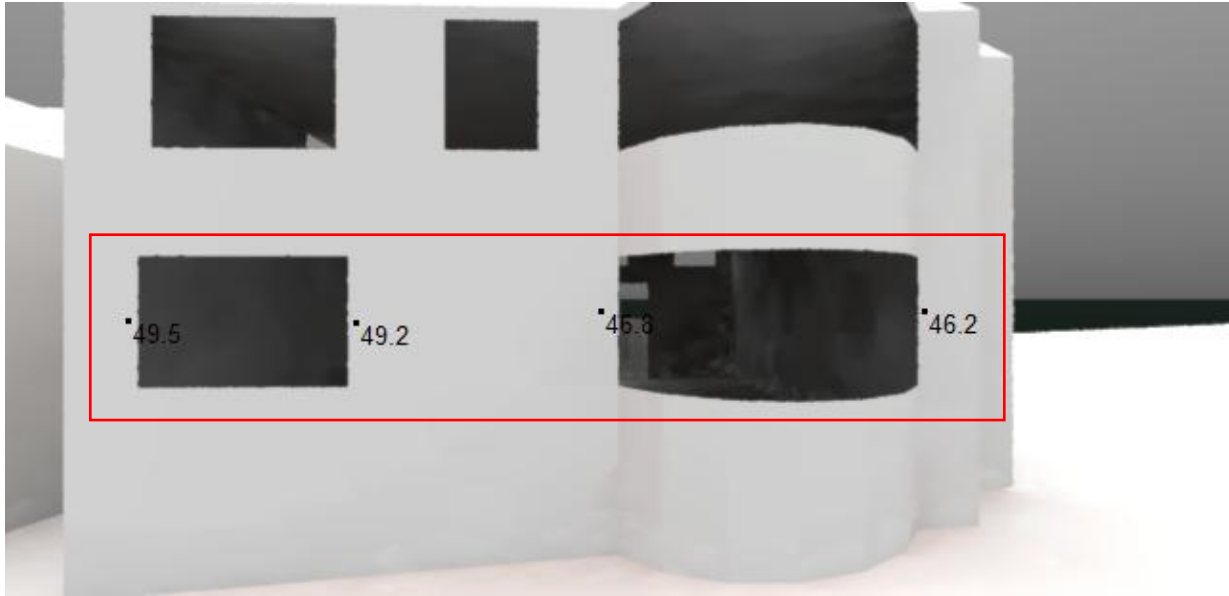


Existing				
Sample of vertical sky components (VSC's)				Average
43.9	42.6	40.8	30.7	39.5

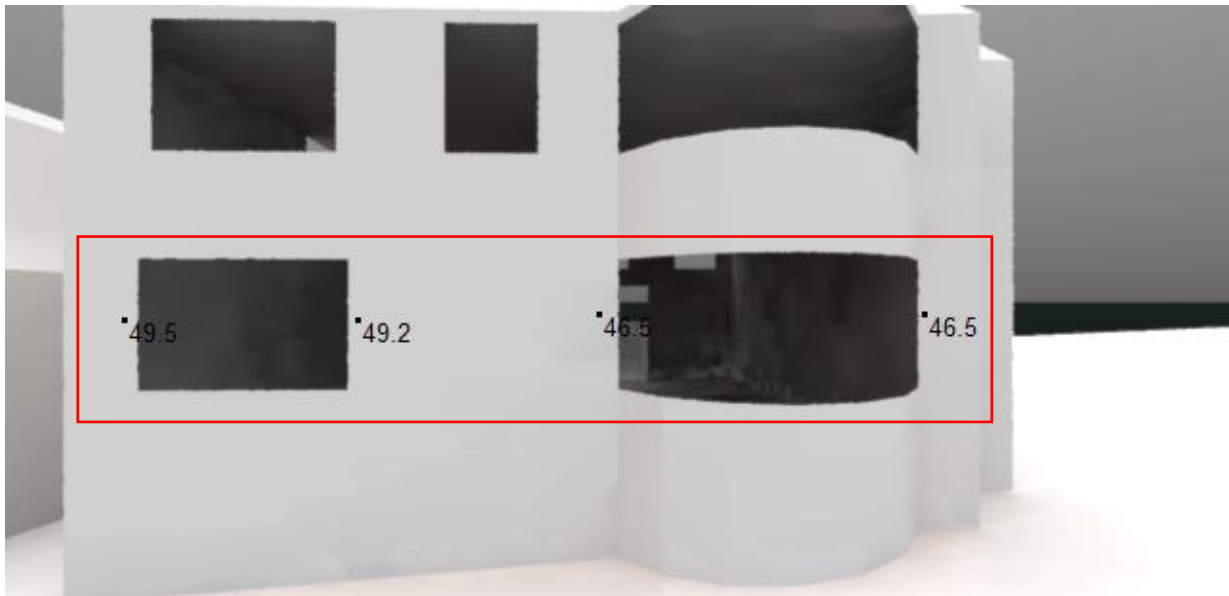


Proposed				
Sample of vertical sky components (VSC's)				Average
41.9	41.7	38.5	29.6	37.92
<b>VSC's &gt; 27%</b>				37.92
<b>Within 80%?</b>				96.0%

Surface 8 - 8 Oakhill Avenue GF



Existing				
Sample of vertical sky components (VSC's)				Average
49.5	49.2	46.8	46.2	47.92

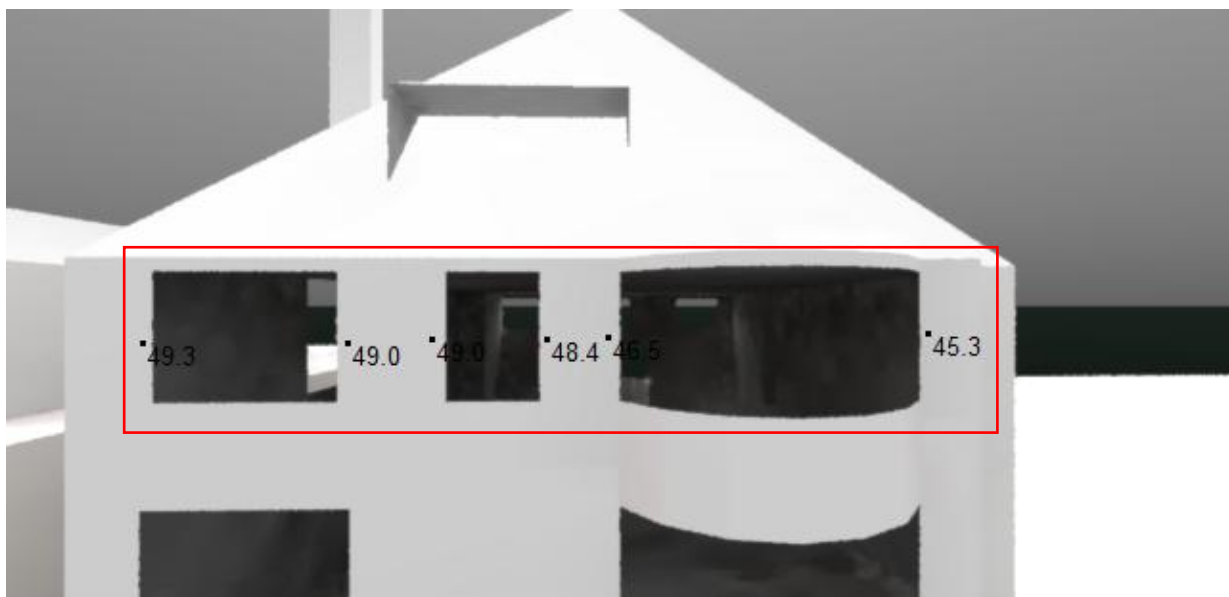


Proposed				
Sample of vertical sky components (VSC's)				Average
49.5	49.2	46.5	46.5	47.92
<b>VSC's &gt; 27%</b>				47.92
<b>Within 80%?</b>				100%

Surface 9 - 8 Oakhill Avenue FF



Existing						
Sample of vertical sky components (VSC's)						Average
49.5	49.1	49.1	49.1	46.3	45.1	48.03



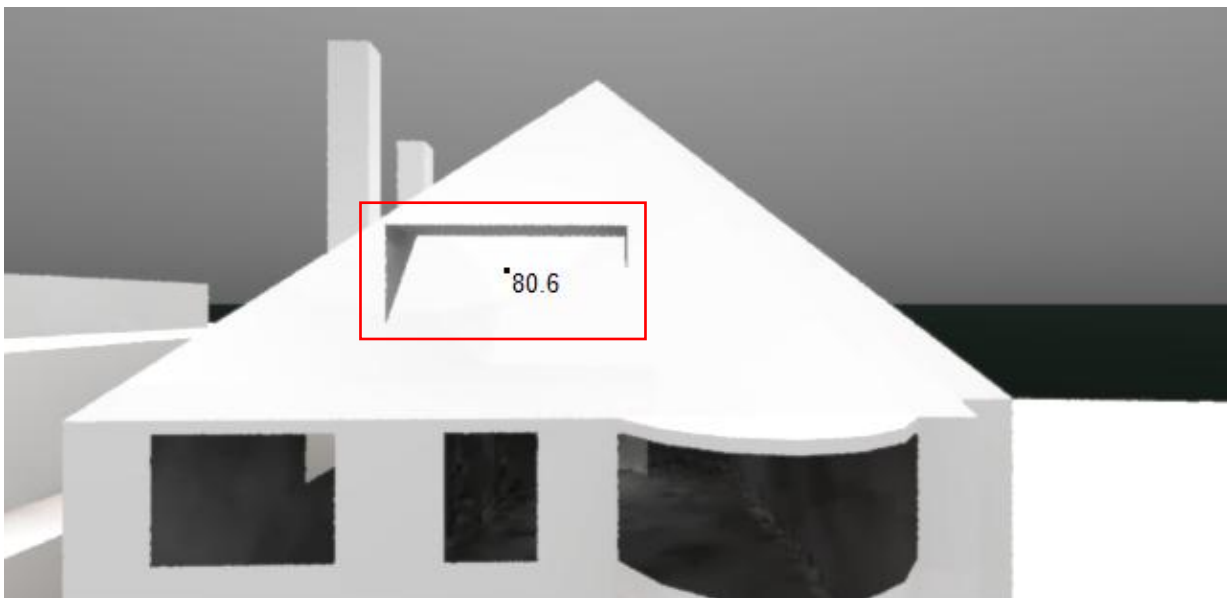
Proposed						
Sample of vertical sky components (VSC's)						Average
49.3	49.0	49.0	48.4	46.5	45.3	47.92
<b>VSC's &gt; 27%</b>						47.92
<b>Within 80%?</b>						99.7%



Surface 10 - 8 Oakhill Avenue SF

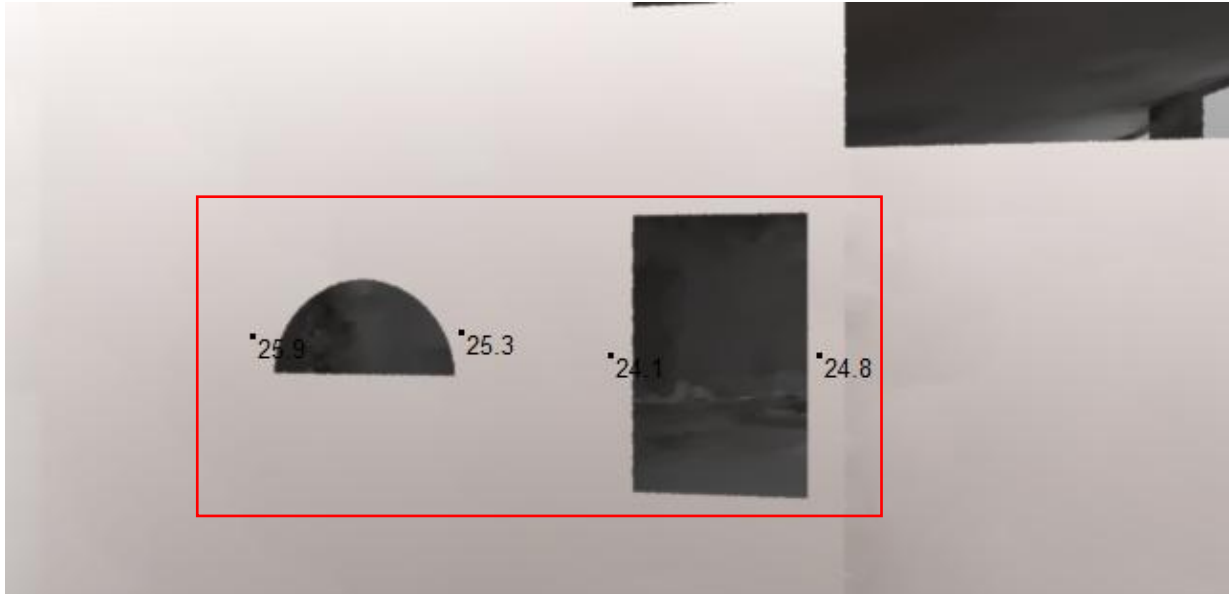


Existing	
Sample of vertical sky components (VSC's)	Average
79.7	79.7

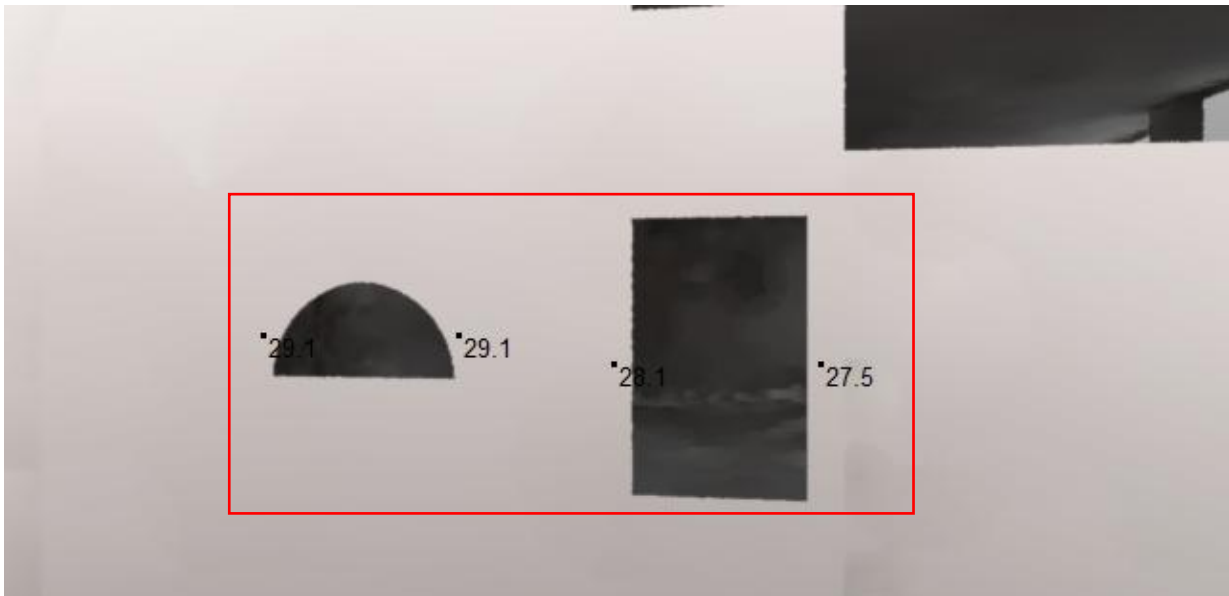


Proposed	
Sample of vertical sky components (VSC's)	Average
80.6	80.6
VSC's > 27%	80.6
Within 80%?	101.1%

Surface 11 - 8 Oakhill Avenue GF

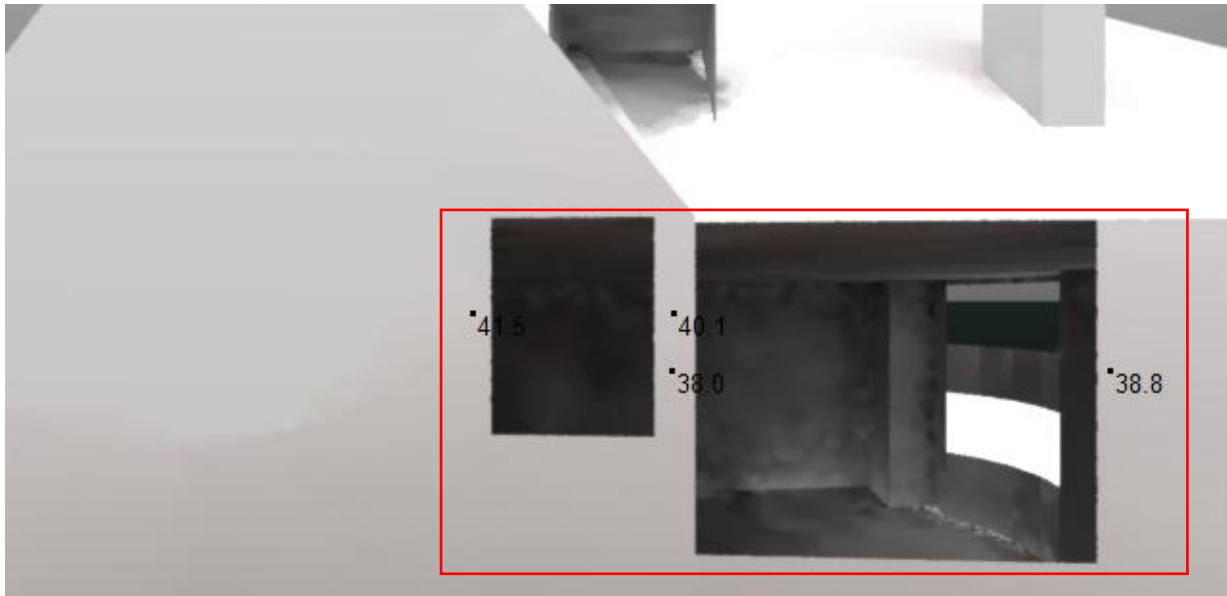


Existing				
Sample of vertical sky components (VSC's)				Average
25.9	25.3	24.1	24.8	25.02



Proposed				
Sample of vertical sky components (VSC's)				Average
29.1	29.1	28.1	27.5	28.45
<b>VSC's &gt; 27%</b>				28.45
<b>Within 80%?</b>				113.7%

Surface 12 - 8 Oakhill Avenue FF



Existing				
Sample of vertical sky components (VSC's)				Average
41.5	40.1	38.0	38.8	39.6



Proposed				
Sample of vertical sky components (VSC's)				Average
39.7	40.4	39.0	41.1	40.05
<b>VSC's &gt; 27%</b>				40.05
<b>Within 80%?</b>				101.1%

Surface 13 - 8 Oakhill Avenue SF

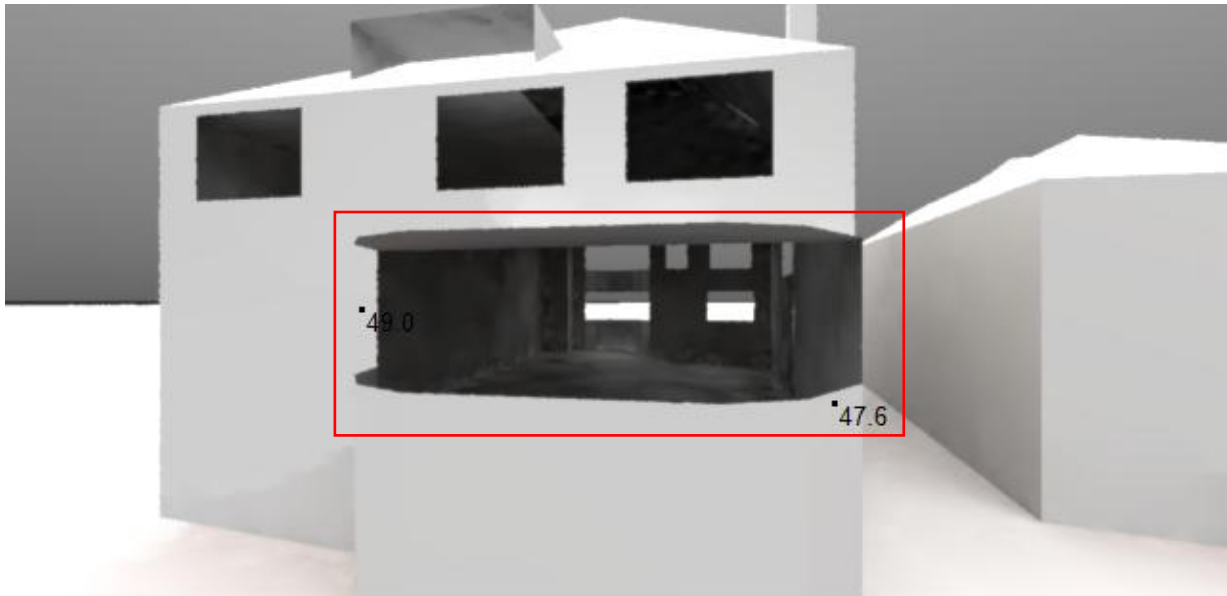


Existing	
Sample of vertical sky components (VSC's)	Average
75.0	75.0

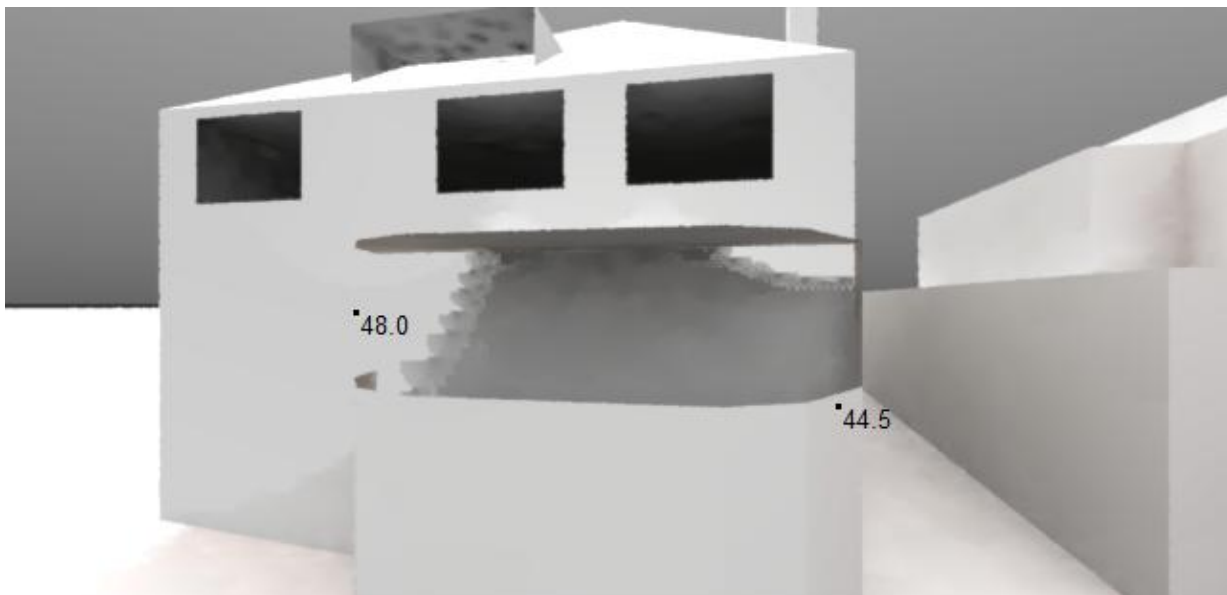


Proposed	
Sample of vertical sky components (VSC's)	Average
74.3	74.3
VSC's > 27%	74.3
Within 80%?	99.1%

Surface 14 - 8 Oakhill Avenue GF



Existing		
Sample of vertical sky components (VSC's)		Average
49.0	47.6	48.3

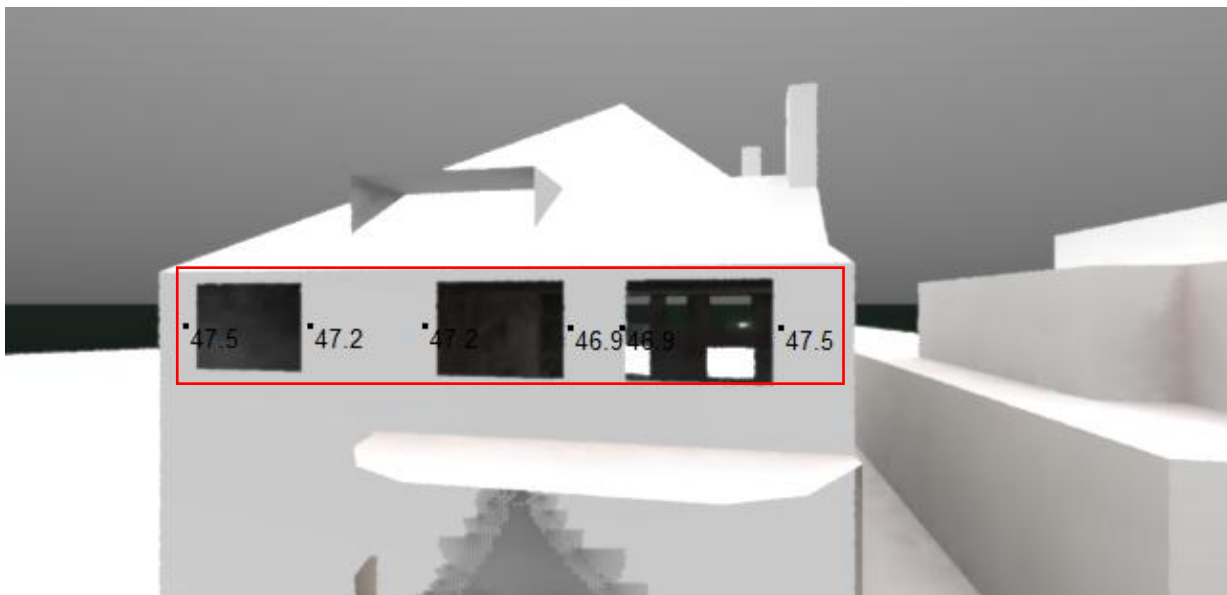


Proposed		
Sample of vertical sky components (VSC's)		Average
48.0	44.5	46.25
<b>VSC's &gt; 27%</b>		46.26
<b>Within 80%?</b>		95.7%

Surface 15 - 8 Oakhill Avenue FF

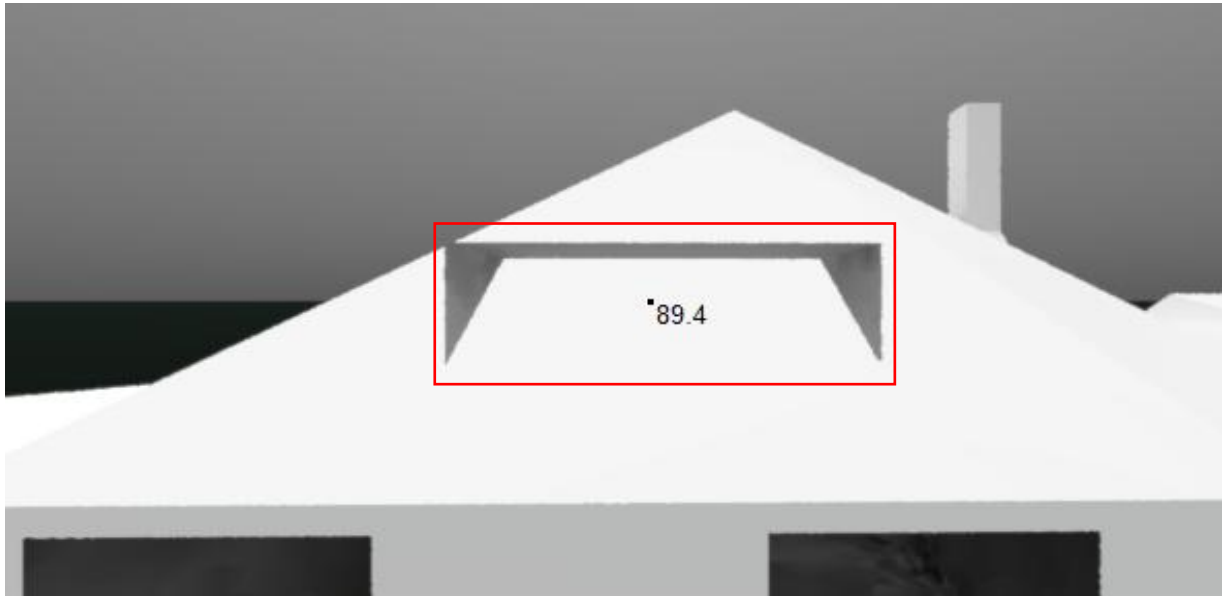


Existing						
Sample of vertical sky components (VSC's)						Average
47.8	47.8	47.8	47.8	47.8	47.8	47.8

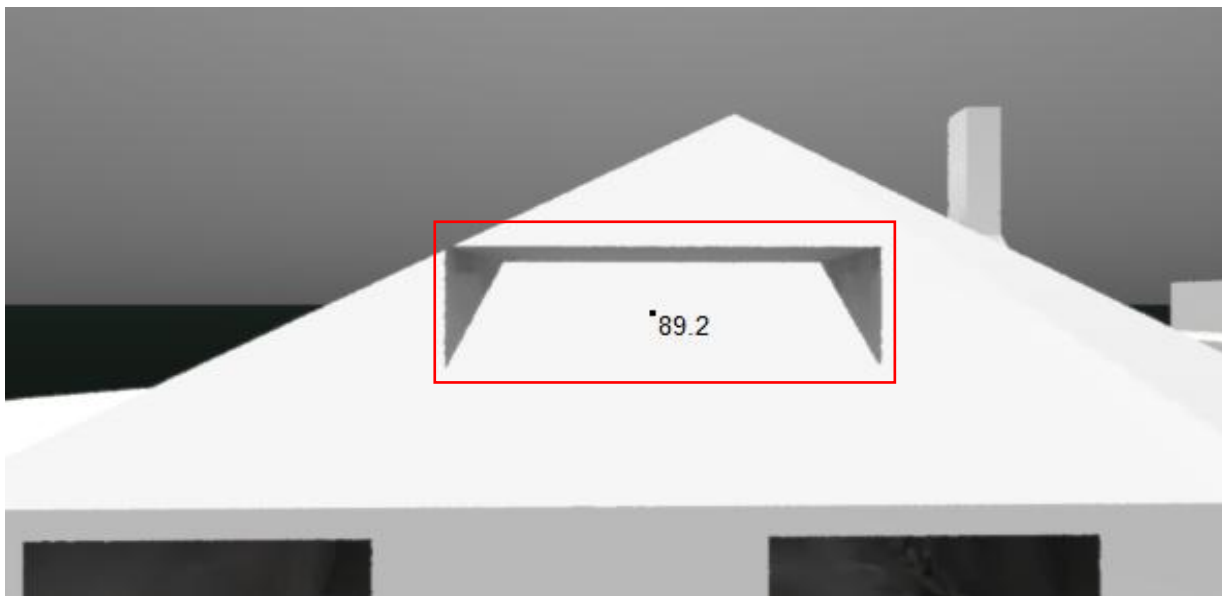


Proposed						
Sample of vertical sky components (VSC's)						Average
47.5	47.2	47.2	46.9	46.9	47.5	47.2
<b>VSC's &gt; 27%</b>						47.2
<b>Within 80%?</b>						99.0%

Surface 16 - 8 Oakhill Avenue SF



Existing	
Sample of vertical sky components (VSC's)	Average
89.4	89.4



Proposed	
Sample of vertical sky components (VSC's)	Average
89.2	89.2
VSC's > 27%	89.2
Within 80%?	99.8%

## 6. Sunlight statistical results:

Surface 1 - 10 Oakhill Avenue GF

Existing

Month	04:00	05:00	06:00	07:00	08:00	09:00	10:00	11:00	12:00	13:00	14:00	15:00	16:00	17:00	18:00	19:00	20:00
Jan						100.00	100.00	100.00	100.00	100.00	100.00	100.00	0.00				
Feb					100.00	100.00	100.00	100.00	100.00	100.00	100.00	100.00	0.00	0.00			
Mar				100.00	100.00	100.00	100.00	100.00	100.00	100.00	100.00	100.00	0.00	0.00	0.00		
Apr		0.00	100.00	100.00	100.00	100.00	100.00	100.00	100.00	100.00	100.00	0.00	0.00	0.00	0.00		
May		66.67	100.00	100.00	100.00	100.00	100.00	100.00	100.00	100.00	100.00	0.00	0.00	0.00	0.00	0.00	
Jun	0.00	100.00	100.00	100.00	100.00	100.00	100.00	100.00	100.00	100.00	100.10	0.00	0.00	0.00	0.00	0.00	0.00
Jul		100.00	100.00	100.00	100.00	100.00	100.00	100.00	100.00	100.00	100.00	0.00	0.00	0.00	0.00	0.00	
Aug			100.00	100.00	100.00	100.00	100.00	100.00	100.00	100.00	100.00	0.00	0.00	0.00	0.00	0.00	
Sep			0.00	100.00	100.00	100.00	100.00	100.00	100.00	100.00	100.00	0.00	0.00	0.00			
Oct				0.00	100.00	100.00	100.00	100.00	100.00	100.00	100.00	100.00	0.00				
Nov					49.47	100.00	100.00	100.00	100.00	100.00	100.00	100.00					
Dec						100.00	100.00	100.00	100.00	100.00	100.00	100.00					



**Proposed**

Month	04:00	05:00	06:00	07:00	08:00	09:00	10:00	11:00	12:00	13:00	14:00	15:00	16:00	17:00	18:00	19:00	20:00
Jan						100.00	100.00	100.00	100.00	100.00	100.00	100.00	0.00				
Feb					100.00	100.00	100.00	100.00	100.00	100.00	100.00	100.00	0.00	0.00			
Mar				100.00	100.00	100.00	100.00	100.00	100.00	100.00	100.00	100.00	0.00	0.00	0.00		
Apr		0.00	100.00	100.00	100.00	100.00	100.00	100.00	100.00	100.00	100.00	0.00	0.00	0.00	0.00		
May		66.67	100.00	100.00	100.00	100.00	100.00	100.00	100.00	100.00	100.00	0.00	0.00	0.00	0.00	0.00	
Jun	0.00	100.00	100.00	100.00	100.00	100.00	100.00	100.00	100.00	100.00	100.10	0.00	0.00	0.00	0.00	0.00	0.00
Jul		100.00	100.00	100.00	100.00	100.00	100.00	100.00	100.00	100.00	100.00	0.00	0.00	0.00	0.00	0.00	
Aug			100.00	100.00	100.00	100.00	100.00	100.00	100.00	100.00	100.00	0.00	0.00	0.00	0.00	0.00	
Sep			0.00	100.00	100.00	100.00	100.00	100.00	100.00	100.00	100.00	0.00	0.00	0.00			
Oct				0.00	100.00	100.00	100.00	100.00	100.00	100.00	100.00	100.00	0.00				
Nov					49.47	100.00	100.00	100.00	100.00	100.00	100.00	100.00					
Dec						100.00	100.00	100.00	100.00	100.00	100.00	100.00					

Sunlight Assessment							
Total Annual Probable Sunlight Hours (APSH)%				Winter Months Annual Probable Sunlight Hours (APSH) % Sept-March			
Existing %	Proposed %	Ratio	Result	Existing %	Proposed %	Ratio	Result
71.95	71.95	1	No Impact	84.54	84.54	1	No impact

Surface 2 - 10 Oakhill Avenue FF

Existing

Month	04:00	05:00	06:00	07:00	08:00	09:00	10:00	11:00	12:00	13:00	14:00	15:00	16:00	17:00	18:00	19:00	20:00
Jan						100.00	100.00	100.00	100.00	100.00	100.00	100.00	0.00				
Feb					100.00	100.00	100.00	100.00	100.00	100.00	100.00	100.00	0.00	0.00			
Mar				100.00	100.00	100.00	100.00	100.00	100.00	100.00	100.00	100.00	0.00	0.00	0.00		
Apr		0.00	100.00	100.00	100.00	100.00	100.00	100.00	100.00	100.00	100.00	0.00	0.00	0.00	0.00		
May		66.67	100.00	100.00	100.00	100.00	100.00	100.00	100.00	100.00	100.00	0.00	0.00	0.00	0.00	0.00	
Jun	85.57	100.00	100.00	100.00	100.00	100.00	100.00	100.00	100.00	100.00	100.10	0.00	0.00	0.00	0.00	0.00	0.00
Jul		100.00	100.00	100.00	100.00	100.00	100.00	100.00	100.00	100.00	100.00	0.00	0.00	0.00	0.00	0.00	
Aug			100.00	100.00	100.00	100.00	100.00	100.00	100.00	100.00	100.00	0.00	0.00	0.00	0.00	0.00	
Sep			42.17	100.00	100.00	100.00	100.00	100.00	100.00	100.00	100.00	0.00	0.00	0.00			
Oct				99.93	100.00	100.00	100.00	100.00	100.00	100.00	100.00	100.00	0.00				
Nov					100.00	100.00	100.00	100.00	100.00	100.00	100.00	100.00					
Dec						100.00	100.00	100.00	100.00	100.00	100.00	100.00					



**Proposed**

Month	04:00	05:00	06:00	07:00	08:00	09:00	10:00	11:00	12:00	13:00	14:00	15:00	16:00	17:00	18:00	19:00	20:00
Jan						100.00	100.00	100.00	100.00	100.00	100.00	100.00	0.00				
Feb					100.00	100.00	100.00	100.00	100.00	100.00	100.00	100.00	0.00	0.00			
Mar				100.00	100.00	100.00	100.00	100.00	100.00	100.00	100.00	100.00	0.00	0.00	0.00		
Apr		0.00	100.00	100.00	100.00	100.00	100.00	100.00	100.00	100.00	100.00	0.00	0.00	0.00	0.00		
May		66.67	100.00	100.00	100.00	100.00	100.00	100.00	100.00	100.00	100.00	0.00	0.00	0.00	0.00	0.00	
Jun	85.57	100.00	100.00	100.00	100.00	100.00	100.00	100.00	100.00	100.00	100.10	0.00	0.00	0.00	0.00	0.00	0.00
Jul		100.00	100.00	100.00	100.00	100.00	100.00	100.00	100.00	100.00	100.00	0.00	0.00	0.00	0.00	0.00	
Aug			100.00	100.00	100.00	100.00	100.00	100.00	100.00	100.00	100.00	0.00	0.00	0.00	0.00	0.00	
Sep			42.17	100.00	100.00	100.00	100.00	100.00	100.00	100.00	100.00	0.00	0.00	0.00			
Oct				99.93	100.00	100.00	100.00	100.00	100.00	100.00	100.00	100.00	0.00				
Nov					100.00	100.00	100.00	100.00	100.00	100.00	100.00	100.00					
Dec						100.00	100.00	100.00	100.00	100.00	100.00	100.00					

Sunlight Assessment							
Total Annual Probable Sunlight Hours (APSH)%				Winter Months Annual Probable Sunlight Hours (APSH) % Sept-March			
Existing %	Proposed %	Ratio	Result	Existing %	Proposed %	Ratio	Result
73.90	73.90	1	No impact	87.27	87.27	1	No impact

Surface 3 - 10 Oakhill Avenue SF

Existing

Month	04:00	05:00	06:00	07:00	08:00	09:00	10:00	11:00	12:00	13:00	14:00	15:00	16:00	17:00	18:00	19:00	20:00
Jan						100	100	100	100	100	100	100	0				
Feb					100	100	100	100	100	100	100	100	0	0			
Mar				100	100	100	100	100	100	100	100	100	0	0	0		
Apr		100	100	100	100	100	100	100	100	100	100	0	0	0	0		
May		100	100	100	100	100	100	100	100	100	100	0	0	0	0	0	
Jun	3.3	100	100	100	100	100	100	100	100	100	100.1	0	0	0	0	0	0
Jul		100	100	100	100	100	100	100	100	100	100	0	0	0	0	0	
Aug			100	100	100	100	100	100	100	100	100	0	0	0	0	0	
Sep			100	100	100	100	100	100	100	100	100	0	0	0			
Oct				100	100	100	100	100	100	100	100	100	0				
Nov					100	100	100	100	100	100	100	100					
Dec						100	100	100	100	100	100	100					



**Proposed**

Month	04:00	05:00	06:00	07:00	08:00	09:00	10:00	11:00	12:00	13:00	14:00	15:00	16:00	17:00	18:00	19:00	20:00
Jan						100	100	100	100	100	100	100	0				
Feb					100	100	100	100	100	100	100	100	0	0			
Mar				100	100	100	100	100	100	100	100	100	0	0	0		
Apr		100	100	100	100	100	100	100	100	100	100	0	0	0	0		
May		100	100	100	100	100	100	100	100	100	100	0	0	0	0	0	
Jun	48.8	100	100	100	100	100	100	100	100	100	100.1	0	0	0	0	0	0
Jul		100	100	100	100	100	100	100	100	100	100	0	0	0	0	0	
Aug			100	100	100	100	100	100	100	100	100	0	0	0	0	0	
Sep			100	100	100	100	100	100	100	100	100	0	0	0			
Oct				100	100	100	100	100	100	100	100	100	0				
Nov					100	100	100	100	100	100	100	100	100				
Dec						100	100	100	100	100	100	100	100				

Sunlight Assessment							
Total Annual Probable Sunlight Hours (APSH)%				Winter Months Annual Probable Sunlight Hours (APSH) % Sept-March			
Existing %	Proposed %	Ratio	Result	Existing %	Proposed %	Ratio	Result
74.67	74.99	1	Minor beneficial	87.27	87.27	1	No impact

Surface 4 - 10 Oakhill Avenue GF

Existing

Month	04:00	05:00	06:00	07:00	08:00	09:00	10:00	11:00	12:00	13:00	14:00	15:00	16:00	17:00	18:00	19:00	20:00
Jan						100	82.15	50	50	11.8	0	0	0				
Feb					100	100	90.95	56.3	50	9.85	0	0	0	0			
Mar				100	100	100	97.3	58.75	50	0.7	0	0	0	0	0		
Apr		0	100	100	100	100	100	60.7	48.65	22.85	0.5	0	0	0	0		
May		1.9	100	100	100	100	100	70.55	50	42.55	19.25	0	0	0	0	0	
Jun	0	0	95.4	100	100	100	100	80.5	50.05	48.4	30.2	0	0	0	0	0	0
Jul		0	100	100	100	100	100	78.3	50	45.9	23.95	0	0	0	0	0	
Aug			100	100	100	100	100	64.15	49.75	25.2	1.2	0	0	0	0	0	
Sep			0	100	100	100	88.1	50	40.5	0	0	0	0	0			
Oct				0	100	100	74	50	35.6	0	0	0	0				
Nov					12.75	98.95	69.35	50	38.45	0	0	0					
Dec						100	73.55	50	45.9	2.65	0	0					



**Proposed**

Month	04:00	05:00	06:00	07:00	08:00	09:00	10:00	11:00	12:00	13:00	14:00	15:00	16:00	17:00	18:00	19:00	20:00
Jan						100.00	82.15	50.00	50.00	11.80	0.00	0.00	0.00				
Feb					100.00	100.00	90.95	56.30	50.00	9.85	0.00	0.00	0.00	0.00			
Mar				100.00	100.00	100.00	97.30	58.75	50.00	0.70	0.00	0.00	0.00	0.00	0.00		
Apr		0.00	100.00	100.00	100.00	100.00	100.00	60.70	48.65	22.85	0.50	0.00	0.00	0.00	0.00		
May		36.35	100.00	100.00	100.00	100.00	100.00	70.55	50.00	42.55	19.25	0.00	0.00	0.00	0.00	0.00	
Jun	0.00	0.00	92.85	100.00	100.00	100.00	100.00	80.50	50.05	48.40	30.20	0.00	0.00	0.00	0.00	0.00	0.00
Jul		0.00	100.00	100.00	100.00	100.00	100.00	78.30	50.00	45.90	23.95	0.00	0.00	0.00	0.00	0.00	
Aug			100.00	100.00	100.00	100.00	100.00	64.15	49.75	25.20	1.20	0.00	0.00	0.00	0.00	0.00	
Sep			0.00	100.00	100.00	100.00	88.10	50.00	40.50	0.00	0.00	0.00	0.00	0.00			
Oct				0.00	100.00	100.00	74.00	50.00	35.60	0.00	0.00	0.00	0.00				
Nov					12.75	98.95	69.35	50.00	38.45	0.00	0.00	0.00					
Dec						100.00	73.55	50.00	45.90	2.65	0.00	0.00					

Sunlight Assessment							
Total Annual Probable Sunlight Hours (APSH)%				Winter Months Annual Probable Sunlight Hours (APSH) % Sept-March			
Existing %	Proposed %	Ratio	Result	Existing %	Proposed %	Ratio	Result
41.88	42.11	1	Minor beneficial	38.35	38.35	1	No impact

## Surface 5 - 10 Oakhill Avenue FF

### Existing

Month	04:00	05:00	06:00	07:00	08:00	09:00	10:00	11:00	12:00	13:00	14:00	15:00	16:00	17:00	18:00	19:00	20:00
Jan						100	82.35	52.6	50	26.3	0.95	0	0				
Feb					100	100	92	65.85	52.7	44.2	16.15	0	0	0			
Mar				100	100	100	98.2	77.85	62.15	52.05	40.15	4.45	0	0	0		
Apr		0	100	100	100	100	100	86.2	72.5	61.5	51.8	0	0	0	0		
May		1.9	100	100	100	100	100	91.4	79.5	68.6	60.55	0	0	0	0	0	
Jun	0	0	95.4	100	100	100	100	94.35	82.95	72.65	63.7	0	0	0	0	0	0
Jul		0	100	100	100	100	100	93.6	81.55	70.6	61.75	0	0	0	0	0	
Aug			100	100	100	100	100	87.3	73.5	62.1	52.5	0	0	0	0	0	
Sep			43.65	100	100	100	92.5	73.4	59.85	50.3	32.9	0	0	0			
Oct				100	100	100	78.05	57.15	48.95	32.1	2.3	0	0				
Nov					100	98.95	70.2	50.45	43.65	11.45	0	0					
Dec						100	73.55	50.1	47.25	11.45	0	0					



**Proposed**

Month	04:00	05:00	06:00	07:00	08:00	09:00	10:00	11:00	12:00	13:00	14:00	15:00	16:00	17:00	18:00	19:00	20:00
Jan						100.00	82.35	52.60	50.00	26.30	0.95	0.00	0.00				
Feb					100.00	100.00	92.00	65.85	52.70	44.20	16.15	0.00	0.00	0.00			
Mar				100.00	100.00	100.00	98.20	77.85	62.15	52.05	40.15	4.45	0.00	0.00	0.00		
Apr		0.00	100.00	100.00	100.00	100.00	100.00	86.20	72.50	61.50	51.80	0.00	0.00	0.00	0.00		
May		36.35	100.00	100.00	100.00	100.00	100.00	91.40	79.50	68.60	60.55	0.00	0.00	0.00	0.00	0.00	
Jun	0.00	4.05	95.75	100.00	100.00	100.00	100.00	94.35	82.95	72.65	63.70	0.00	0.00	0.00	0.00	0.00	0.00
Jul		0.00	100.00	100.00	100.00	100.00	100.00	93.60	81.55	70.60	61.75	0.00	0.00	0.00	0.00	0.00	
Aug			100.00	100.00	100.00	100.00	100.00	87.30	73.50	62.10	52.50	0.00	0.00	0.00	0.00	0.00	
Sep			43.65	100.00	100.00	100.00	92.50	73.40	59.85	50.30	32.90	0.00	0.00	0.00			
Oct				100.00	100.00	100.00	78.05	57.15	48.95	32.10	2.30	0.00	0.00				
Nov					100.00	98.95	70.20	50.45	43.65	11.45	0.00	0.00					
Dec						100.00	73.55	50.10	47.25	11.45	0.00	0.00					

Sunlight Assessment							
Total Annual Probable Sunlight Hours (APSH)%				Winter Months Annual Probable Sunlight Hours (APSH) % Sept-March			
Existing %	Proposed %	Ratio	Result	Existing %	Proposed %	Ratio	Result
50.79	51.06	1	Minor beneficial	47.16	47.16	1	No impact

Surface 6 - 10 Oakhill Avenue SF

Existing

Month	04:00	05:00	06:00	07:00	08:00	09:00	10:00	11:00	12:00	13:00	14:00	15:00	16:00	17:00	18:00	19:00	20:00
Jan						99.6	99.6	99.6	99.6	99.6	94	43	0				
Feb					99.6	99.6	99.6	99.6	99.6	99.6	99.5	83.1	0	0			
Mar				99.6	99.6	99.6	99.6	99.6	99.6	99.6	99.6	97.1	0	0	0		
Apr		2.9	99.6	99.6	99.6	99.6	99.6	99.6	99.6	99.6	99.6	0	0	0	0		
May		95	99.6	99.6	99.6	99.6	99.6	99.6	99.6	99.6	99.6	0	0	0	0	0	
Jun	0	99.6	99.6	99.6	99.6	99.6	99.6	99.6	99.6	99.6	99.6	0	0	0	0	0	0
Jul		79.5	99.6	99.6	99.6	99.6	99.6	99.6	99.6	99.6	99.6	0	0	0	0	0	
Aug			99.6	99.6	99.6	99.6	99.6	99.6	99.6	99.6	99.6	0	0	0	0	0	
Sep			99.6	99.6	99.6	99.6	99.6	99.6	99.6	99.6	99.6	0	0	0			
Oct				99.6	99.6	99.6	99.6	99.6	99.6	99.6	95.7	38	0				
Nov					99.6	99.6	99.6	99.6	99.6	99.1	83.2	11.3					
Dec						99.6	99.6	99.6	99.6	98.9	83.6	14.8					



## Proposed

Month	04:00	05:00	06:00	07:00	08:00	09:00	10:00	11:00	12:00	13:00	14:00	15:00	16:00	17:00	18:00	19:00	20:00
Jan						99.6	99.6	99.6	99.6	99.6	94	43	0				
Feb					99.6	99.6	99.6	99.6	99.6	99.6	99.5	83.1	0	0			
Mar				99.6	99.6	99.6	99.6	99.6	99.6	99.6	99.6	97.1	0	0	0		
Apr		99.6	99.6	99.6	99.6	99.6	99.6	99.6	99.6	99.6	99.6	0	0	0	0		
May		99.6	99.6	99.6	99.6	99.6	99.6	99.6	99.6	99.6	99.6	0	0	0	0	0	
Jun	0	99.4	99.6	99.6	99.6	99.6	99.6	99.6	99.6	99.6	99.6	0	0	0	0	0	0
Jul		99.6	99.6	99.6	99.6	99.6	99.6	99.6	99.6	99.6	99.6	0	0	0	0	0	
Aug			99.6	99.6	99.6	99.6	99.6	99.6	99.6	99.6	99.6	0	0	0	0	0	
Sep			99.6	99.6	99.6	99.6	99.6	99.6	99.6	99.6	99.6	0	0	0			
Oct				99.6	99.6	99.6	99.6	99.6	99.6	99.6	95.7	38	0				
Nov					99.6	99.6	99.6	99.6	99.6	99.1	83.2	11.3					
Dec						99.6	99.6	99.6	99.6	98.9	83.6	14.8					

Sunlight Assessment							
Total Annual Probable Sunlight Hours (APSH)%				Winter Months Annual Probable Sunlight Hours (APSH) % Sept-March			
Existing %	Proposed %	Ratio	Result	Existing %	Proposed %	Ratio	Result
71.00	71.86	1	Minor beneficial	80.50	80.50	1	No impact

## Surface 7 - 10 Oakhill Avenue SF

## Existing

Month	04:00	05:00	06:00	07:00	08:00	09:00	10:00	11:00	12:00	13:00	14:00	15:00	16:00	17:00	18:00	19:00	20:00
Jan						100	0	0	0	0	0	0	0				
Feb					100	100	0	0	0	0	0	0	0	0			
Mar				95.5	100	100	0	0	0	0	0	0	0	0	0		
Apr		5.6	85.3	100	100	100	100	0	0	0	0	0	0	0	0		
May		35.9	100	100	100	100	100	0	0	0	0	0	0	0	0	0	
Jun	0	43.9	100	100	100	100	100	0	0	0	0	0	0	0	0	0	0
Jul		25	100	100	100	100	100	0	0	0	0	0	0	0	0	0	
Aug			81.5	100	100	100	100	0	0	0	0	0	0	0	0	0	
Sep			24.2	100	100	100	0	0	0	0	0	0	0	0			
Oct				98.6	100	100	0	0	0	0	0	0	0				
Nov					100	0	0	0	0	0	0	0	0				
Dec						100	0	0	0	0	0	0	0				

**Proposed**

Month	04:00	05:00	06:00	07:00	08:00	09:00	10:00	11:00	12:00	13:00	14:00	15:00	16:00	17:00	18:00	19:00	20:00
Jan						100	0	0	0	0	0	0	0				
Feb					100	100	0	0	0	0	0	0	0	0			
Mar				70.4	100	100	0	0	0	0	0	0	0	0	0		
Apr		0	17.3	87.7	100	100	100	0	0	0	0	0	0	0	0		
May		0	9.6	100	100	100	100	0	0	0	0	0	0	0	0	0	
Jun	0	0	11.6	100	100	100	100	0	0	0	0	0	0	0	0	0	0
Jul		0	1.7	98.2	100	100	100	0	0	0	0	0	0	0	0	0	
Aug			15.3	81.9	100	100	100	0	0	0	0	0	0	0	0	0	
Sep			40	83.4	100	100	0	0	0	0	0	0	0	0			
Oct				100	100	100	0	0	0	0	0	0	0				
Nov					100	0	0	0	0	0	0	0					
Dec						100	0	0	0	0	0	0					

Sunlight Assessment							
Total Annual Probable Sunlight Hours (APSH)%				Winter Months Annual Probable Sunlight Hours (APSH) % Sept-March			
Existing %	Proposed %	Ratio	Result	Existing %	Proposed %	Ratio	Result
28.14	24.06	0.85	Negligible	19.89	19.46	0.98	Negligible

Surface 7A - 10 Oakhill Avenue GF

Existing

Month	04:00	05:00	06:00	07:00	08:00	09:00	10:00	11:00	12:00	13:00	14:00	15:00	16:00	17:00	18:00	19:00	20:00
Jan						0.00	0.00	0.00	0.00	0.00	0.00	0.00	0.00				
Feb					0.00	0.00	0.00	0.00	0.00	0.00	0.00	0.00	0.00	0.00			
Mar				0.00	0.00	0.00	0.00	0.00	0.00	0.00	0.00	0.00	0.00	0.00	0.00		
Apr		0.00	0.00	0.00	0.00	0.00	0.00	0.00	0.00	0.00	0.00	0.00	0.00	0.00	0.00		
May		0.00	0.00	0.00	0.00	0.00	0.00	0.00	0.00	0.00	0.00	5.65	0.00	0.00	0.00	0.00	
Jun	0.00	0.00	0.00	0.00	0.00	0.00	0.00	0.00	0.00	0.00	0.00	18.90	0.25	0.00	0.00	0.00	38.40
Jul		0.00	0.00	0.00	0.00	0.00	0.00	0.00	0.00	0.00	0.00	11.55	0.00	0.00	0.00	0.00	
Aug			0.00	0.00	0.00	0.00	0.00	0.00	0.00	0.00	0.00	0.00	0.00	0.00	0.00	0.00	
Sep			0.00	0.00	0.00	0.00	0.00	0.00	0.00	0.00	0.00	0.00	0.00	0.00			
Oct				0.00	0.00	0.00	0.00	0.00	0.00	0.00	0.00	0.00	0.00				
Nov					0.00	0.00	0.00	0.00	0.00	0.00	0.00	0.00					
Dec						0.00	0.00	0.00	0.00	0.00	0.00	0.00					



**Proposed**

Month	04:00	05:00	06:00	07:00	08:00	09:00	10:00	11:00	12:00	13:00	14:00	15:00	16:00	17:00	18:00	19:00	20:00
Jan						0.00	0.00	0.00	0.00	0.00	0.00	0.00	0.00				
Feb					0.00	0.00	0.00	0.00	0.00	0.00	0.00	0.00	0.00	0.00			
Mar				0.00	0.00	0.00	0.00	0.00	0.00	0.00	0.00	0.00	0.00	0.00	0.00		
Apr		0.00	0.00	0.00	0.00	0.00	0.00	0.00	0.00	0.00	0.00	0.00	0.00	0.00	0.00		
May		0.00	0.00	0.00	0.00	0.00	0.00	0.00	0.00	0.00	0.00	5.65	0.00	0.00	0.00	0.00	
Jun	0.00	0.00	0.00	0.00	0.00	0.00	0.00	0.00	0.00	0.00	0.00	18.90	0.25	0.00	0.00	0.00	38.40
Jul		0.00	0.00	0.00	0.00	0.00	0.00	0.00	0.00	0.00	0.00	11.55	0.00	0.00	0.00	0.00	
Aug			0.00	0.00	0.00	0.00	0.00	0.00	0.00	0.00	0.00	0.00	0.00	0.00	0.00	0.00	
Sep			0.00	0.00	0.00	0.00	0.00	0.00	0.00	0.00	0.00	0.00	0.00	0.00			
Oct				0.00	0.00	0.00	0.00	0.00	0.00	0.00	0.00	0.00	0.00				
Nov					0.00	0.00	0.00	0.00	0.00	0.00	0.00	0.00					
Dec						0.00	0.00	0.00	0.00	0.00	0.00	0.00					

Sunlight Assessment							
Total Annual Probable Sunlight Hours (APSH)%				Winter Months Annual Probable Sunlight Hours (APSH) % Sept-March			
Existing %	Proposed %	Ratio	Result	Existing %	Proposed %	Ratio	Result
0.53	0.53	1	No impact	0.00	0.00	1	No impact



Surface 7B - 10 Oakhill Avenue GF

Existing

Month	04:00	05:00	06:00	07:00	08:00	09:00	10:00	11:00	12:00	13:00	14:00	15:00	16:00	17:00	18:00	19:00	20:00
Jan						0.00	0.00	0.00	0.00	0.00	0.00	0.00	0.00				
Feb					0.00	0.00	0.00	0.00	0.00	0.00	0.00	0.00	0.00	0.00			
Mar				0.00	0.00	0.00	0.00	0.00	0.00	0.00	0.00	0.00	0.00	0.00	0.00		
Apr		0.00	0.00	0.00	0.00	0.00	0.00	0.00	0.00	0.00	0.00	19.25	0.00	0.00	0.00		
May		0.00	0.00	0.00	0.00	0.00	0.00	0.00	0.00	0.00	0.00	56.50	32.80	4.80	0.05	0.00	
Jun	0.00	0.00	0.00	0.00	0.00	0.00	0.00	0.00	0.00	0.00	0.00	63.55	50.50	30.30	12.00	7.40	38.40
Jul		0.00	0.00	0.00	0.00	0.00	0.00	0.00	0.00	0.00	0.00	61.30	40.95	8.60	0.50	0.00	
Aug			0.00	0.00	0.00	0.00	0.00	0.00	0.00	0.00	0.00	24.45	0.00	0.00	0.00	0.00	
Sep			0.00	0.00	0.00	0.00	0.00	0.00	0.00	0.00	0.00	0.00	0.00	0.00			
Oct				0.00	0.00	0.00	0.00	0.00	0.00	0.00	0.00	0.00	0.00				
Nov					0.00	0.00	0.00	0.00	0.00	0.00	0.00	0.00					
Dec						0.00	0.00	0.00	0.00	0.00	0.00	0.00					





**Proposed**

Month	04:00	05:00	06:00	07:00	08:00	09:00	10:00	11:00	12:00	13:00	14:00	15:00	16:00	17:00	18:00	19:00	20:00
Jan						0.00	0.00	0.00	0.00	0.00	0.00	0.00	0.00				
Feb					0.00	0.00	0.00	0.00	0.00	0.00	0.00	0.00	0.00	0.00			
Mar				0.00	0.00	0.00	0.00	0.00	0.00	0.00	0.00	0.00	0.00	0.00	0.00		
Apr		0.00	0.00	0.00	0.00	0.00	0.00	0.00	0.00	0.00	0.00	19.25	0.00	0.00	0.00		
May		0.00	0.00	0.00	0.00	0.00	0.00	0.00	0.00	0.00	0.00	56.50	32.80	4.80	0.05	0.00	
Jun	0.00	0.00	0.00	0.00	0.00	0.00	0.00	0.00	0.00	0.00	0.00	63.55	50.50	30.30	12.00	7.40	38.40
Jul		0.00	0.00	0.00	0.00	0.00	0.00	0.00	0.00	0.00	0.00	61.30	40.95	8.60	0.50	0.00	
Aug			0.00	0.00	0.00	0.00	0.00	0.00	0.00	0.00	0.00	24.45	0.00	0.00	0.00	0.00	
Sep			0.00	0.00	0.00	0.00	0.00	0.00	0.00	0.00	0.00	0.00	0.00	0.00			
Oct				0.00	0.00	0.00	0.00	0.00	0.00	0.00	0.00	0.00	0.00				
Nov					0.00	0.00	0.00	0.00	0.00	0.00	0.00	0.00					
Dec						0.00	0.00	0.00	0.00	0.00	0.00	0.00					

Sunlight Assessment							
Total Annual Probable Sunlight Hours (APSH)%				Winter Months Annual Probable Sunlight Hours (APSH) % Sept-March			
Existing %	Proposed %	Ratio	Result	Existing %	Proposed %	Ratio	Result
3.18	3.18	1	No impact	0.00	0.00	1	No impact

Surface 8 - 8 Oakhill Avenue GF

Existing

Month	04:00	05:00	06:00	07:00	08:00	09:00	10:00	11:00	12:00	13:00	14:00	15:00	16:00	17:00	18:00	19:00	20:00
Jan						100.00	100.00	100.00	100.00	91.67	83.33	83.33	0.06				
Feb					100.00	100.00	100.00	100.00	100.00	91.67	83.33	75.00	0.05	0.00			
Mar				100.00	100.00	100.00	100.00	100.00	100.00	91.67	83.33	75.05	0.00	0.00	0.00		
Apr		45.08	91.67	91.67	100.00	100.00	100.00	100.00	100.00	83.33	75.00	9.44	0.00	0.00	0.00		
May		83.33	83.33	91.67	100.00	100.00	100.00	100.00	99.99	83.33	75.00	0.00	0.00	0.00	0.00	0.00	
Jun	24.27	83.33	83.33	91.67	91.67	100.00	100.00	100.00	100.00	83.33	24.86	0.02	0.00	0.00	0.00	0.00	0.00
Jul		83.33	83.33	91.67	99.99	100.00	100.00	100.00	100.00	83.33	75.00	0.83	0.00	0.00	0.00	0.00	
Aug			91.67	91.67	100.00	100.00	100.00	100.00	100.00	83.33	75.00	12.28	0.00	0.00	0.00	0.00	
Sep			77.47	100.00	100.00	100.00	100.00	100.00	91.67	91.68	83.33	18.19	0.00	0.00			
Oct				100.00	100.00	100.00	100.00	100.00	91.67	91.67	83.33	75.00	0.00				
Nov					100.00	100.00	100.00	100.00	91.67	91.67	83.33	75.00					
Dec						100.00	100.00	100.00	100.00	91.67	83.33	75.00					



**Proposed**

Month	04:00	05:00	06:00	07:00	08:00	09:00	10:00	11:00	12:00	13:00	14:00	15:00	16:00	17:00	18:00	19:00	20:00
Jan						100.00	100.00	100.00	100.00	91.67	83.33	83.33	13.78				
Feb					100.00	100.00	100.00	100.00	100.00	91.67	83.33	75.00	7.63	0.00			
Mar				100.00	100.00	100.00	100.00	100.00	100.00	91.67	83.33	75.05	0.00	0.00	0.00		
Apr		45.08	91.67	91.67	100.00	100.00	100.00	100.00	100.00	83.33	75.00	9.44	0.00	0.00	0.00		
May		83.33	83.33	91.67	100.00	100.00	100.00	100.00	99.99	83.33	75.00	0.00	0.00	0.00	0.00	0.00	
Jun	24.27	83.33	83.33	91.67	91.67	100.00	100.00	100.00	100.00	83.33	24.86	0.02	0.00	0.00	0.00	0.00	0.00
Jul		83.33	83.33	91.67	99.99	100.00	100.00	100.00	100.00	83.33	75.00	0.83	0.00	0.00	0.00	0.00	
Aug			91.67	91.67	100.00	100.00	100.00	100.00	100.00	83.33	75.00	12.28	0.00	0.00	0.00	0.00	
Sep			77.47	100.00	100.00	100.00	100.00	100.00	91.67	91.68	83.33	18.19	0.00	0.00			
Oct				100.00	100.00	100.00	100.00	100.00	91.67	91.67	83.33	75.00	0.00				
Nov					100.00	100.00	100.00	100.00	91.67	91.67	83.33	75.00					
Dec						100.00	100.00	100.00	100.00	91.67	83.33	75.00					

Sunlight Assessment							
Total Annual Probable Sunlight Hours (APSH)%				Winter Months Annual Probable Sunlight Hours (APSH) % Sept-March			
Existing %	Proposed %	Ratio	Result	Existing %	Proposed %	Ratio	Result
69.16	69.31	1	Minor beneficial	81.67	82.06	1	Minor beneficial

Surface 9 - 8 Oakhill Avenue FF

Existing

Month	04:00	05:00	06:00	07:00	08:00	09:00	10:00	11:00	12:00	13:00	14:00	15:00	16:00	17:00	18:00	19:00	20:00
Jan						100.00	100.00	100.00	100.00	94.44	88.89	88.89	13.57				
Feb					100.00	100.00	100.00	100.00	100.00	94.44	88.89	83.33	10.78	0.00			
Mar				100.00	100.00	100.00	100.00	100.00	100.00	94.44	88.89	83.40	4.07	0.00	0.00		
Apr		72.53	94.44	94.44	100.00	100.00	100.00	100.00	100.00	88.89	83.33	14.56	0.00	0.00	0.00		
May		62.52	88.89	94.44	100.00	100.00	100.00	100.00	99.99	88.89	83.33	8.22	0.00	0.00	0.00	0.00	
Jun	16.41	58.99	88.89	94.44	94.44	100.00	100.00	100.00	100.00	88.89	16.64	8.30	0.00	0.00	0.00	0.00	0.00
Jul		56.92	88.89	94.44	99.99	100.00	100.00	100.00	100.00	88.89	83.33	8.75	0.06	0.00	0.00	0.00	
Aug			94.44	94.44	100.00	100.00	100.00	100.00	100.00	89.39	83.33	14.80	2.10	0.00	0.00	0.00	
Sep			94.44	100.00	100.00	100.00	100.00	100.00	94.44	94.46	88.89	15.33	1.66	0.00			
Oct				100.00	100.00	100.00	100.00	100.00	94.44	94.44	88.89	83.33	0.00				
Nov					100.00	100.00	100.00	100.00	94.44	94.44	88.89	83.33					
Dec						100.00	100.00	100.00	100.00	94.44	88.89	83.33					



**Proposed**

Month	04:00	05:00	06:00	07:00	08:00	09:00	10:00	11:00	12:00	13:00	14:00	15:00	16:00	17:00	18:00	19:00	20:00
Jan						100.00	100.00	100.00	100.00	94.44	88.89	88.89	14.09				
Feb					100.00	100.00	100.00	100.00	100.00	94.44	88.89	83.33	10.78	0.00			
Mar				100.00	100.00	100.00	100.00	100.00	100.00	94.44	88.89	83.40	4.07	0.00	0.00		
Apr		72.53	94.44	94.44	100.00	100.00	100.00	100.00	100.00	88.89	83.33	14.56	0.00	0.00	0.00		
May		62.52	88.89	94.44	100.00	100.00	100.00	100.00	99.99	88.89	83.33	8.22	0.00	0.00	0.00	0.00	
Jun	16.41	58.99	88.89	94.44	94.44	100.00	100.00	100.00	100.00	88.89	16.64	8.30	0.00	0.00	0.00	0.00	0.00
Jul		56.92	88.89	94.44	99.99	100.00	100.00	100.00	100.00	88.89	83.33	8.75	0.06	0.00	0.00	0.00	
Aug			94.44	94.44	100.00	100.00	100.00	100.00	100.00	89.39	83.33	14.80	2.10	0.00	0.00	0.00	
Sep			94.44	100.00	100.00	100.00	100.00	100.00	94.44	94.46	88.89	15.33	1.66	0.00			
Oct				100.00	100.00	100.00	100.00	100.00	94.44	94.44	88.89	83.33	0.00				
Nov					100.00	100.00	100.00	100.00	94.44	94.44	88.89	83.33					
Dec						100.00	100.00	100.00	100.00	94.44	88.89	83.33					

Sunlight Assessment							
Total Annual Probable Sunlight Hours (APSH)%				Winter Months Annual Probable Sunlight Hours (APSH) % Sept-March			
Existing %	Proposed %	Ratio	Result	Existing %	Proposed %	Ratio	Result
70.80	70.80	1	No impact	84.05	84.06	1	Minor beneficial

Surface 10 - 8 Oakhill Avenue SF

Existing

Month	04:00	05:00	06:00	07:00	08:00	09:00	10:00	11:00	12:00	13:00	14:00	15:00	16:00	17:00	18:00	19:00	20:00
Jan						100	100	100	100	100	100	100	0				
Feb					100	100	100	100	100	100	100	100	0	0			
Mar				100	100	100	100	100	100	100	100	100.1	0	0	0		
Apr		100	100	100	100	100	100	100	100	100	100	0	0	0	0		
May		100	100	100	100	100	100	100	100	100	100	0	0	0	0	0	
Jun	100	100	100	100	100	100	100	100	100	100	0	0	0	0	0	0	0
Jul		100	100	100	100	100	100	100	100	100	100	0	0	0	0	0	0
Aug			100	100	100	100	100	100	100	100	100	0	0	0	0	0	0
Sep			100	100	100	100	100	100	100	100	100	0	0	0			
Oct				100	100	100	100	100	100	100	100	100	0				
Nov					100	100	100	100	100	100	100	100					
Dec						100	100	100	100	100	100	100					



**Proposed**

Month	04:00	05:00	06:00	07:00	08:00	09:00	10:00	11:00	12:00	13:00	14:00	15:00	16:00	17:00	18:00	19:00	20:00
Jan						100	100	100	100	100	100	100	0				
Feb					100	100	100	100	100	100	100	100	0	0			
Mar				100	100	100	100	100	100	100	100	100.1	0	0	0		
Apr		100	100	100	100	100	100	100	100	100	100	0	0	0	0		
May		100	100	100	100	100	100	100	100	100	100	0	0	0	0	0	
Jun	100	100	100	100	100	100	100	100	100	100	0	0	0	0	0	0	0
Jul		100	100	100	100	100	100	100	100	100	100	0	0	0	0	0	
Aug			100	100	100	100	100	100	100	100	100	0	0	0	0	0	
Sep			100	100	100	100	100	100	100	100	100	0	0	0			
Oct				100	100	100	100	100	100	100	100	100	0				
Nov					100	100	100	100	100	100	100	100					
Dec						100	100	100	100	100	100	100					

Sunlight Assessment							
Total Annual Probable Sunlight Hours (APSH)%				Winter Months Annual Probable Sunlight Hours (APSH) % Sept-March			
Existing %	Proposed %	Ratio	Result	Existing %	Proposed %	Ratio	Result
74.65	74.65	1	No impact	87.27	87.27	1	No impact

Surface 11 - 8 Oakhill Avenue GF

Existing

Month	04:00	05:00	06:00	07:00	08:00	09:00	10:00	11:00	12:00	13:00	14:00	15:00	16:00	17:00	18:00	19:00	20:00
Jan						0.00	100.00	76.55	0.00	0.00	0.00	0.00	0.00				
Feb					0.00	0.00	100.00	100.00	81.30	4.65	0.00	0.00	0.00	0.00			
Mar				0.00	0.00	0.00	100.00	100.00	100.00	84.10	11.25	0.00	0.00	0.00	0.00		
Apr		0.00	0.00	0.00	0.00	0.00	0.00	100.00	100.00	100.00	88.05	27.60	0.00	0.00	0.00		
May		0.00	0.00	0.00	0.00	0.00	0.00	100.00	100.00	100.00	100.00	89.05	40.90	0.15	35.85	95.95	
Jun	0.00	0.00	0.00	0.00	0.00	0.00	0.00	100.00	100.00	100.00	100.00	100.00	81.65	23.45	45.50	100.00	100.00
Jul		0.00	0.00	0.00	0.00	0.00	0.00	100.00	100.00	100.00	100.00	93.45	55.95	4.65	23.25	73.35	
Aug			0.00	0.00	0.00	0.00	0.00	100.00	100.00	100.00	90.20	33.60	0.00	0.00	0.00	50.00	
Sep			0.00	0.00	0.00	0.00	100.00	100.00	100.00	72.55	4.00	0.00	0.00	0.00			
Oct				0.00	0.00	0.00	100.00	98.30	23.45	0.00	0.00	0.00	0.00				
Nov					0.00	100.00	100.00	9.65	0.00	0.00	0.00	0.00					
Dec						0.00	100.00	0.25	0.00	0.00	0.00	0.00					





**Proposed**

Month	04:00	05:00	06:00	07:00	08:00	09:00	10:00	11:00	12:00	13:00	14:00	15:00	16:00	17:00	18:00	19:00	20:00
Jan						0.00	100.00	100.00	76.85	0.00	0.00	0.00	0.00				
Feb					0.00	0.00	100.00	100.00	100.00	9.90	0.00	0.00	0.00	0.00			
Mar				0.00	0.00	0.00	100.00	100.00	100.00	100.00	27.50	0.00	0.00	0.00	0.00		
Apr		0.00	0.00	0.00	0.00	0.00	0.00	100.00	100.00	100.00	100.00	64.80	1.75	0.00	15.70		
May		0.00	0.00	0.00	0.00	0.00	0.00	100.00	100.00	100.00	100.00	100.00	81.50	67.05	79.60	58.45	
Jun	0.00	0.00	0.00	0.00	0.00	0.00	0.00	100.00	100.00	100.00	100.00	100.00	98.90	88.80	99.95	89.20	100.00
Jul		0.00	0.00	0.00	0.00	0.00	0.00	100.00	100.00	100.00	100.00	100.00	87.05	64.65	79.25	78.75	
Aug			0.00	0.00	0.00	0.00	0.00	100.00	100.00	100.00	100.00	76.30	4.10	0.00	11.95	2.45	
Sep			0.00	0.00	0.00	0.00	100.00	100.00	100.00	92.50	10.25	0.00	0.00	0.00			
Oct				0.00	0.00	0.00	100.00	100.00	81.30	0.00	0.00	0.00	0.00				
Nov					0.00	100.00	100.00	100.00	45.30	0.00	0.00	0.00					
Dec						0.00	100.00	100.00	39.85	0.00	0.00	0.00					

Sunlight Assessment							
Total Annual Probable Sunlight Hours (APSH)%				Winter Months Annual Probable Sunlight Hours (APSH) % Sept-March			
Existing %	Proposed %	Ratio	Result	Existing %	Proposed %	Ratio	Result
33.93	41.08	1.2	Moderate beneficial	25.26	34.19	1.4	Major beneficial



Surface 12 - 8 Oakhill Avenue FF

Existing

Month	04:00	05:00	06:00	07:00	08:00	09:00	10:00	11:00	12:00	13:00	14:00	15:00	16:00	17:00	18:00	19:00	20:00
Jan						0.00	100.00	100.00	100.00	91.40	53.10	10.85	0.00				
Feb					0.00	0.00	100.00	100.00	100.00	100.00	95.15	60.20	18.15	0.00			
Mar				0.00	0.00	0.00	100.00	100.00	100.00	100.00	100.00	100.00	73.30	23.45	0.00		
Apr		0.00	0.00	0.00	0.00	0.00	0.00	100.00	100.00	100.00	100.00	99.30	98.10	84.15	46.25		
May		0.00	0.00	0.00	0.00	0.00	0.00	100.00	100.00	100.00	100.00	98.75	97.45	95.90	89.60	77.60	
Jun	0.00	0.00	0.00	0.00	0.00	0.00	0.00	100.00	100.00	100.00	100.00	98.65	97.30	95.70	93.50	89.05	80.10
Jul		0.00	0.00	0.00	0.00	0.00	0.00	100.00	100.00	100.00	100.00	98.95	97.65	96.15	92.95	80.30	
Aug			0.00	0.00	0.00	0.00	0.00	100.00	100.00	100.00	100.00	99.40	98.15	85.95	50.00	21.55	
Sep			0.00	0.00	0.00	0.00	100.00	100.00	100.00	100.00	100.00	94.50	61.00	10.40			
Oct				0.00	0.00	0.00	100.00	100.00	100.00	100.00	84.20	35.95	0.00				
Nov					0.00	100.05	100.00	100.00	100.00	76.60	35.10	0.00					
Dec						0.00	100.00	100.00	98.10	64.45	24.70	0.00					



## Proposed

Month	04:00	05:00	06:00	07:00	08:00	09:00	10:00	11:00	12:00	13:00	14:00	15:00	16:00	17:00	18:00	19:00	20:00
Jan						0.00	100.00	100.00	100.00	100.00	79.15	7.20	0.00				
Feb					0.00	0.00	100.00	100.00	100.00	100.00	100.00	68.85	0.00	0.00			
Mar				0.00	0.00	0.00	100.00	100.00	100.00	100.00	100.00	100.00	82.55	0.00	0.00		
Apr		0.00	0.00	0.00	0.00	0.00	0.00	100.00	100.00	100.00	100.00	99.30	98.10	90.50	67.00		
May		0.00	0.00	0.00	0.00	0.00	0.00	100.00	100.00	100.00	100.00	98.75	97.45	95.90	93.65	90.25	
Jun	0.00	0.00	0.00	0.00	0.00	0.00	0.00	100.00	100.00	100.00	100.00	98.65	97.30	95.70	93.50	89.80	80.10
Jul		0.00	0.00	0.00	0.00	0.00	0.00	100.00	100.00	100.00	100.00	98.95	97.65	96.15	94.15	90.95	
Aug			0.00	0.00	0.00	0.00	0.00	100.00	100.00	100.00	100.00	99.40	98.15	92.25	70.80	76.40	
Sep			0.00	0.00	0.00	0.00	100.00	100.00	100.00	100.00	100.00	99.75	62.65	0.00			
Oct				0.00	0.00	0.00	100.00	100.00	100.00	100.00	90.35	23.40	0.00				
Nov					0.00	100.05	100.00	100.00	100.00	97.45	34.00	1.30					
Dec						0.00	100.00	100.00	100.00	96.70	45.10	1.80					

Sunlight Assessment							
Total Annual Probable Sunlight Hours (APSH)%				Winter Months Annual Probable Sunlight Hours (APSH) % Sept-March			
Existing %	Proposed %	Ratio	Result	Existing %	Proposed %	Ratio	Result
56.15	57.68	1	Minor beneficial	57.18	58.69	1	Minor beneficial

Surface 13 - 8 Oakhill Avenue SF

Existing

Month	04:00	05:00	06:00	07:00	08:00	09:00	10:00	11:00	12:00	13:00	14:00	15:00	16:00	17:00	18:00	19:00	20:00
Jan						0	90	90	90	90	90	90	86.1				
Feb					0	0	90	90	90	90	90	90	90	80.8			
Mar				0	0	0	89.9	90	90	90	90	90	89.9	79.3	48.5		
Apr		0	0	0	0	0	0	90	90	90	90	90	89.9	75.8	38.4		
May		0	0	0	0	0	0	90	90	90	90	90	89.8	74.5	32.5	0	
Jun	0	0	0	0	0	0	0	90	90	90	90	90	89.9	77.1	34.8	0	0
Jul		0	0	0	0	0	0	90	90	90	90	90	89.9	79.1	40.2	1.4	
Aug			0	0	0	0	0	90	90	90	90	90	89.9	77.5	41.2	3.3	
Sep			0	0	0	0	90	90	90	90	90	90	88.9	73			
Oct				0	0	0	90	90	90	90	90	90	87				
Nov					0	0	90	90	90	90	90	90					
Dec						0	90	90	90	90	90	90					



**Proposed**

Month	04:00	05:00	06:00	07:00	08:00	09:00	10:00	11:00	12:00	13:00	14:00	15:00	16:00	17:00	18:00	19:00	20:00
Jan						0	90	90	90	90	90	90	48				
Feb					0	0	90	90	90	90	90	90	90	44.7			
Mar				0	0	0	89.9	90	90	90	90	90	89.9	79.3	48.5		
Apr		0	0	0	0	0	0	90	90	90	90	90	89.9	75.8	38.4		
May		0	0	0	0	0	0	90	90	90	90	90	89.8	74.5	32.5	0	
Jun	0	0	0	0	0	0	0	90	90	90	90	90	89.9	77.1	34.8	0	0
Jul		0	0	0	0	0	0	90	90	90	90	90	89.9	79.1	40.2	1.4	
Aug			0	0	0	0	0	90	90	90	90	90	89.9	77.5	41.2	3.3	
Sep			0	0	0	0	90	90	90	90	90	90	88.9	73			
Oct				0	0	0	90	90	90	90	90	90	87				
Nov					0	0	90	90	90	90	90	90					
Dec						0	90	90	90	90	90	82.5					

Sunlight Assessment							
Total Annual Probable Sunlight Hours (APSH)%				Winter Months Annual Probable Sunlight Hours (APSH) % Sept-March			
Existing %	Proposed %	Ratio	Result	Existing %	Proposed %	Ratio	Result
54.78	54.20	0.99	Negligible	69.12	67.63	0.98	Negligible

Surface 14 - 8 Oakhill Avenue GF

Existing

Month	04:00	05:00	06:00	07:00	08:00	09:00	10:00	11:00	12:00	13:00	14:00	15:00	16:00	17:00	18:00	19:00	20:00
Jan						0.00	0.00	0.00	7.77	9.47	33.02	33.33	46.25				
Feb					0.00	0.00	0.00	0.00	16.67	16.67	33.33	33.33	50.00	50.00			
Mar				0.00	0.00	0.00	0.00	0.00	16.67	16.67	33.33	33.33	50.00	66.68	66.67		
Apr		0.00	0.00	0.00	0.00	0.00	0.00	0.00	16.67	16.67	33.33	50.00	50.00	66.67	66.67		
May		20.67	0.00	0.00	0.00	0.00	0.00	0.00	16.67	33.33	33.33	50.00	66.67	66.67	83.33	83.33	
Jun	47.42	28.05	0.00	0.00	0.00	0.00	0.00	0.00	16.67	33.33	33.33	50.00	66.67	66.67	83.33	83.33	100.00
Jul		25.75	0.00	0.00	0.00	0.00	0.00	0.00	11.18	16.67	33.33	50.00	66.67	66.67	83.33	83.33	
Aug			0.00	0.00	0.00	0.00	0.00	0.00	16.67	16.67	33.33	50.00	50.00	66.67	66.67	83.33	
Sep			0.00	0.00	0.00	0.00	0.00	0.00	16.67	16.67	33.33	50.00	50.00	66.67			
Oct				0.00	0.00	0.00	0.00	0.00	12.23	16.67	33.33	33.33	50.00				
Nov					0.00	0.00	0.00	0.00	1.88	12.28	33.33	8.10					
Dec						0.00	0.00	0.00	0.00	3.72	32.22	0.00					



**Proposed**

Month	04:00	05:00	06:00	07:00	08:00	09:00	10:00	11:00	12:00	13:00	14:00	15:00	16:00	17:00	18:00	19:00	20:00
Jan						0.00	0.00	0.00	10.42	1.12	0.00	0.00	20.52				
Feb					0.00	0.00	0.00	0.00	16.67	16.67	28.83	23.15	50.00	47.85			
Mar				0.00	0.00	0.00	0.00	0.00	16.67	16.67	33.33	33.33	50.00	66.68	66.67		
Apr		0.00	0.00	0.00	0.00	0.00	0.00	0.00	16.67	16.67	33.33	50.00	50.00	66.67	66.67		
May		20.67	0.00	0.00	0.00	0.00	0.00	0.00	13.45	33.33	33.33	50.00	66.67	66.67	83.33	83.33	
Jun	47.42	28.05	0.00	0.00	0.00	0.00	0.00	0.00	16.67	33.33	33.33	50.00	66.67	66.67	83.33	83.33	100.00
Jul		25.75	0.00	0.00	0.00	0.00	0.00	0.00	16.67	16.67	33.33	50.00	66.67	66.67	83.33	83.33	
Aug			0.00	0.00	0.00	0.00	0.00	0.00	16.67	16.67	33.33	50.00	50.00	66.67	66.67	83.33	
Sep			0.00	0.00	0.00	0.00	0.00	0.00	16.67	16.67	33.33	50.00	50.00	66.67			
Oct				0.00	0.00	0.00	0.00	0.00	16.67	14.75	22.42	33.33	45.13				
Nov					0.00	0.00	0.00	0.00	2.88	0.00	0.00	6.42					
Dec						0.00	0.00	0.00	1.55	0.00	0.00	0.00					

Sunlight Assessment							
Total Annual Probable Sunlight Hours (APSH)%				Winter Months Annual Probable Sunlight Hours (APSH) % Sept-March			
Existing %	Proposed %	Ratio	Result	Existing %	Proposed %	Ratio	Result
23.00	21.55	0.94	Negligible	15.46	11.67	0.75	Minor adverse

Surface 15 - 8 Oakhill Avenue FF

Existing

Month	04:00	05:00	06:00	07:00	08:00	09:00	10:00	11:00	12:00	13:00	14:00	15:00	16:00	17:00	18:00	19:00	20:00
Jan						0.00	0.00	0.00	0.00	0.00	0.00	0.00	100.00				
Feb					0.00	0.00	0.00	0.00	0.00	0.00	0.00	0.00	100.00	100.00			
Mar				0.00	0.00	0.00	0.00	0.00	0.00	0.00	0.00	0.00	100.00	100.00	100.00		
Apr		0.00	0.00	0.00	0.00	0.00	0.00	0.00	0.00	0.00	0.00	100.00	100.00	100.00	100.00		
May		0.00	0.00	0.00	0.00	0.00	0.00	0.00	0.00	0.00	0.00	100.00	100.00	100.00	100.00	100.00	
Jun	0.00	0.00	0.00	0.00	0.00	0.00	0.00	0.00	0.00	0.00	0.00	100.00	100.00	100.00	100.00	100.00	100.00
Jul		0.00	0.00	0.00	0.00	0.00	0.00	0.00	0.00	0.00	0.00	100.00	100.00	100.00	100.00	100.00	
Aug			0.00	0.00	0.00	0.00	0.00	0.00	0.00	0.00	0.00	100.00	100.00	100.00	100.00	100.00	
Sep			0.00	0.00	0.00	0.00	0.00	0.00	0.00	0.00	0.00	100.00	100.00	100.00			
Oct				0.00	0.00	0.00	0.00	0.00	0.00	0.00	0.00	0.00	100.00				
Nov					0.00	0.00	0.00	0.00	0.00	0.00	0.00	0.00					
Dec						0.00	0.00	0.00	0.00	0.00	0.00	0.00					





**Proposed**

Month	04:00	05:00	06:00	07:00	08:00	09:00	10:00	11:00	12:00	13:00	14:00	15:00	16:00	17:00	18:00	19:00	20:00
Jan						0.00	0.00	0.00	0.00	0.00	0.00	0.00	100.00				
Feb					0.00	0.00	0.00	0.00	0.00	0.00	0.00	0.00	100.00	100.00			
Mar				0.00	0.00	0.00	0.00	0.00	0.00	0.00	0.00	0.00	100.00	100.00	100.00		
Apr		0.00	0.00	0.00	0.00	0.00	0.00	0.00	0.00	0.00	0.00	100.00	100.00	100.00	100.00		
May		0.00	0.00	0.00	0.00	0.00	0.00	0.00	0.00	0.00	0.00	100.00	100.00	100.00	100.00	100.00	
Jun	0.00	0.00	0.00	0.00	0.00	0.00	0.00	0.00	0.00	0.00	0.00	100.00	100.00	100.00	100.00	100.00	100.00
Jul		0.00	0.00	0.00	0.00	0.00	0.00	0.00	0.00	0.00	0.00	100.00	100.00	100.00	100.00	100.00	
Aug			0.00	0.00	0.00	0.00	0.00	0.00	0.00	0.00	0.00	100.00	100.00	100.00	100.00	100.00	
Sep			0.00	0.00	0.00	0.00	0.00	0.00	0.00	0.00	0.00	100.00	100.00	100.00			
Oct				0.00	0.00	0.00	0.00	0.00	0.00	0.00	0.00	0.00	100.00				
Nov					0.00	0.00	0.00	0.00	0.00	0.00	0.00	0.00					
Dec						0.00	0.00	0.00	0.00	0.00	0.00	0.00					

Sunlight Assessment							
Total Annual Probable Sunlight Hours (APSH)%				Winter Months Annual Probable Sunlight Hours (APSH) % Sept-March			
Existing %	Proposed %	Ratio	Result	Existing %	Proposed %	Ratio	Result
24.65	24.65	1	No impact	12.73	12.73	1	No impact

Surface 16 - 8 Oakhill Avenue SF

Existing

Month	04:00	05:00	06:00	07:00	08:00	09:00	10:00	11:00	12:00	13:00	14:00	15:00	16:00	17:00	18:00	19:00	20:00
Jan						0	0	0	0	0	0	0	100				
Feb					0	0	0	0	0	0	0	0	100	100			
Mar				0	0	0	0	0	0	0	0	0	100	100	100		
Apr		0	0	0	0	0	0	0	0	0	0	100	100	100	100		
May		0	0	0	0	0	0	0	0	0	0	100	100	100	100	100	
Jun	0	0	0	0	0	0	0	0	0	0	0	100	100	100	100	100	100
Jul		0	0	0	0	0	0	0	0	0	0	100	100	100	100	100	
Aug			0	0	0	0	0	0	0	0	0	100	100	100	100	100	
Sep			0	0	0	0	0	0	0	0	0	100	100	100			
Oct				0	0	0	0	0	0	0	0	0	100				
Nov					0	0	0	0	0	0	0	0					
Dec						0	0	0	0	0	0	0					



**Proposed**

Month	04:00	05:00	06:00	07:00	08:00	09:00	10:00	11:00	12:00	13:00	14:00	15:00	16:00	17:00	18:00	19:00	20:00
Jan						0	0	0	0	0	0	0	100				
Feb					0	0	0	0	0	0	0	0	100	100			
Mar				0	0	0	0	0	0	0	0	0	100	100	100		
Apr		0	0	0	0	0	0	0	0	0	0	100	100	100	100		
May		0	0	0	0	0	0	0	0	0	0	100	100	100	100	100	
Jun	0	0	0	0	0	0	0	0	0	0	0	100	100	100	100	100	100
Jul		0	0	0	0	0	0	0	0	0	0	100	100	100	100	100	
Aug			0	0	0	0	0	0	0	0	0	100	100	100	100	100	
Sep			0	0	0	0	0	0	0	0	0	100	100	100			
Oct				0	0	0	0	0	0	0	0	0	100				
Nov					0	0	0	0	0	0	0	0					
Dec						0	0	0	0	0	0	0					

Sunlight Assessment							
Total Annual Probable Sunlight Hours (APSH)%				Winter Months Annual Probable Sunlight Hours (APSH) % Sept-March			
Existing %	Proposed %	Ratio	Result	Existing %	Proposed %	Ratio	Result
24.65	24.65	1	No impact	12.73	12.73	1	No impact

## 7. Overshadowing statistical results:

Amenity Area 1 - 10 Oakhill Avenue

Existing

Month	04:00	05:00	06:00	07:00	08:00	09:00	10:00	11:00	12:00	13:00	14:00	15:00	16:00	17:00	18:00	19:00	20:00
Jan						0	3.9	31.4	66.2	87.5	98.3	100	100				
Feb					0	5.9	0.1	38.4	71.1	88.9	99.2	100	100	100			
Mar				0	26.9	41.1	45.3	67.9	86.2	96.8	100	100	100	100	100		
Apr		0	0	58.2	76.8	74.4	80.6	88.4	97.9	100	100	100	100	100	100		
May		56.1	37.9	93	87	87.5	91.2	97.2	100	100	100	100	100	100	100	100	
Jun	0	70.5	69.9	95	90.3	90.7	94.1	99.1	100	100	100	100	100	100	100	100	100
Jul		65.8	30.6	94.3	87.7	87.5	90.8	96.4	100	100	100	100	100	100	100	100	
Aug			0	49.7	77.6	74.6	80.5	88	97.5	100	100	100	100	100	100	100	
Sep			0	0	48.4	40.1	50.2	74.3	89.5	98.9	100	100	100	100			
Oct				0	7.5	1.3	12	56.8	80.7	94.9	100	100	100				
Nov					0	0	14.1	45.4	76.6	92.9	100	100					
Dec						0	10.6	39.5	71.8	89.9	99.1	100					

## Proposed

Month	04:00	05:00	06:00	07:00	08:00	09:00	10:00	11:00	12:00	13:00	14:00	15:00	16:00	17:00	18:00	19:00	20:00
Jan						0	3.9	31.4	66.2	87.5	98.3	100	100				
Feb					0	5.9	0.1	38.4	71.1	88.9	99.2	100	100	100			
Mar				0	2.6	41.1	45.3	67.9	86.2	96.8	100	100	100	100	100		
Apr		0	0	1.9	72.8	74.4	80.6	88.4	97.9	100	100	100	100	100	100		
May		51.3	37.9	73.1	87	87.5	91.2	97.2	100	100	100	100	100	100	100	100	
Jun	0	66.2	63.2	85.5	90.3	90.7	94.1	99.1	100	100	100	100	100	100	100	100	100
Jul		57.9	30.6	66.4	87.7	87.5	90.8	96.4	100	100	100	100	100	100	100	100	
Aug			0	1.1	72	74.6	80.5	88	97.5	100	100	100	100	100	100	100	
Sep			0	0	19.3	40.1	50.2	74.3	89.5	98.9	100	100	100	100			
Oct				0	0	1.3	12	56.8	80.7	94.9	100	100	100				
Nov					0	0	14.1	45.4	76.6	92.9	100	100					
Dec						0	10.6	39.5	71.8	89.9	99.1	100					

Overshadowing Assessment			
% of area m2 receiving sunlight on 21st March criterion			
Existing %	Proposed %	Ratio	Result
72.02	70.0	0.97	Negligible

## Amenity Area 2 - 8 Oakhill Avenue

### Existing

Month	04:00	05:00	06:00	07:00	08:00	09:00	10:00	11:00	12:00	13:00	14:00	15:00	16:00	17:00	18:00	19:00	20:00
Jan						8.6	18	35.8	73.7	98.9	100	99.8	100				
Feb					56.3	21.3	6.5	68.9	92.3	99.9	100	100	100	100			
Mar				91.3	70.7	52.2	70	91.8	100	100	100	100	100	100	100		
Apr		0	100	96.2	87.3	88.7	98.4	100	100	100	100	100	100	100	100		
May		100	100	99	97.8	99.9	100	100	100	100	100	100	100	100	100	100	
Jun	0	100	100	99.8	99.9	100	100	100	100	100	100	100	100	100	100	100	100
Jul		100	100	99.6	97.9	99.6	100	100	100	100	100	100	100	100	100	100	
Aug			100	96.8	87.7	88.5	98	100	100	100	100	100	100	100	100	100	
Sep			0	87.7	62.2	54.6	76.9	95.8	100	100	100	100	100	100			
Oct				0	37.7	3.3	42.4	83.2	97.2	100	100	100	100				
Nov					0	0	20	51.8	84.1	100	97.2	100					
Dec						0	7.7	12.5	60.4	93.9	68.8	81.5					

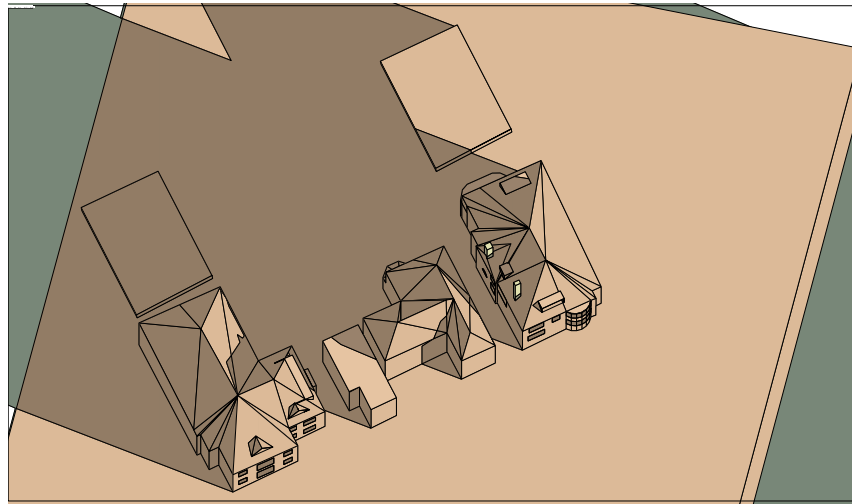
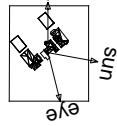
## Proposed

Month	04:00	05:00	06:00	07:00	08:00	09:00	10:00	11:00	12:00	13:00	14:00	15:00	16:00	17:00	18:00	19:00	20:00
Jan						8.6	18	33.8	46.7	57.3	80.7	99.2	100				
Feb					56.3	21.3	6.5	68.9	92.1	97.5	100	100	100	100			
Mar				91.3	70.7	52.2	70	91.8	100	100	100	100	100	100	100		
Apr		0	100	96.2	87.3	88.7	98.4	100	100	100	100	100	100	100	100		
May		100	100	99	97.8	99.9	100	100	100	100	100	100	100	100	100	100	
Jun	0	100	100	99.8	99.9	100	100	100	100	100	100	100	100	100	100	100	100
Jul		100	100	99.6	97.9	99.6	100	100	100	100	100	100	100	100	100	100	
Aug			100	96.8	87.7	88.5	98	100	100	100	100	100	100	100	100	100	
Sep			0	87.7	62.2	54.6	76.9	95.8	100	100	100	100	100	100			
Oct				0	37.7	3.3	42.4	83.2	94.3	98.7	100	100	100				
Nov					0	0	29.5	36.5	48	65.9	86.9	99.9					
Dec						0	22.1	11.9	3.9	45.7	57.3	81.5					

Overshadowing Assessment			
% of area m2 receiving sunlight on 21st March criterion			
Existing %	Proposed %	Ratio	Result
89.67	89.67	1	No impact

Suncast image:

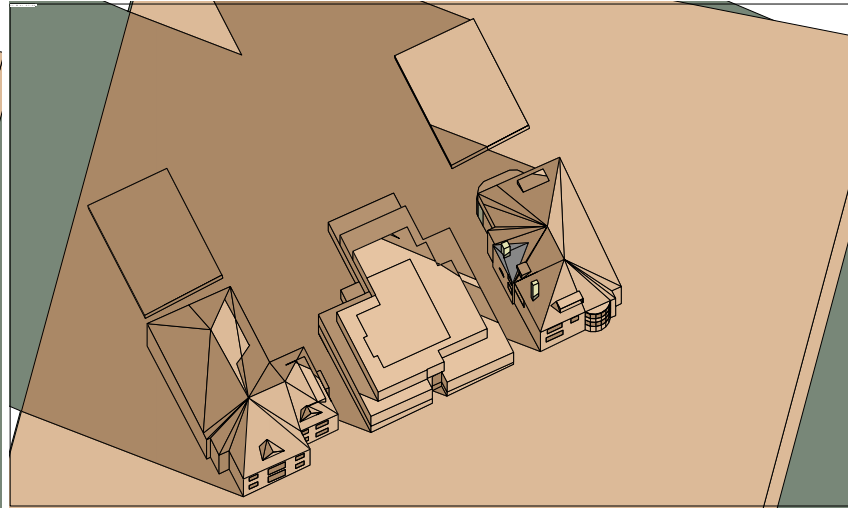
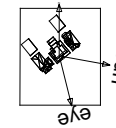
View time = 21 Mar 07:00  
Site Latitude = 51.55  
Longitude diff. = -0.19  
Model Bearing = 0.00  
Sun: azi = 100.38 alt = 7.63  
Eye: azi = 166.00 alt = 69.10



**Existing**

Suncast image:

View time = 21 Mar 07:00  
Site Latitude = 51.55  
Longitude diff. = -0.19  
Model Bearing = 0.00  
Sun: azi = 100.38 alt = 7.63  
Eye: azi = 166.00 alt = 69.10

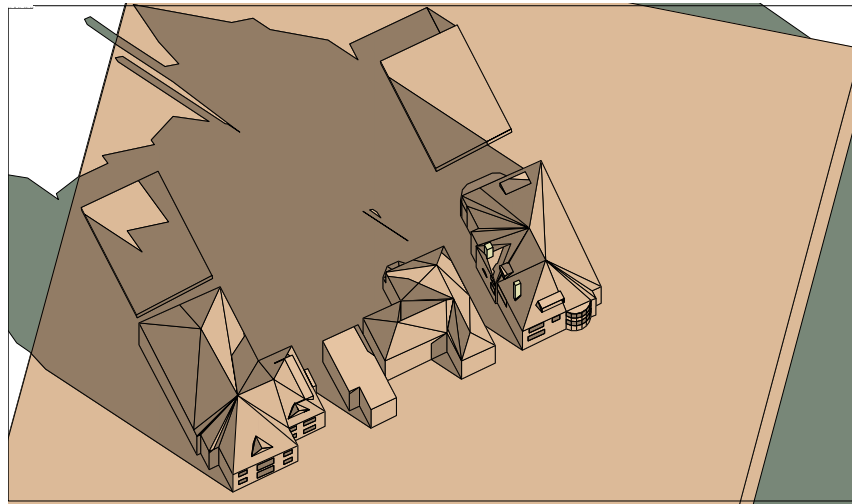
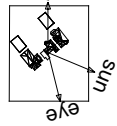


**Proposed**



Suncast image:

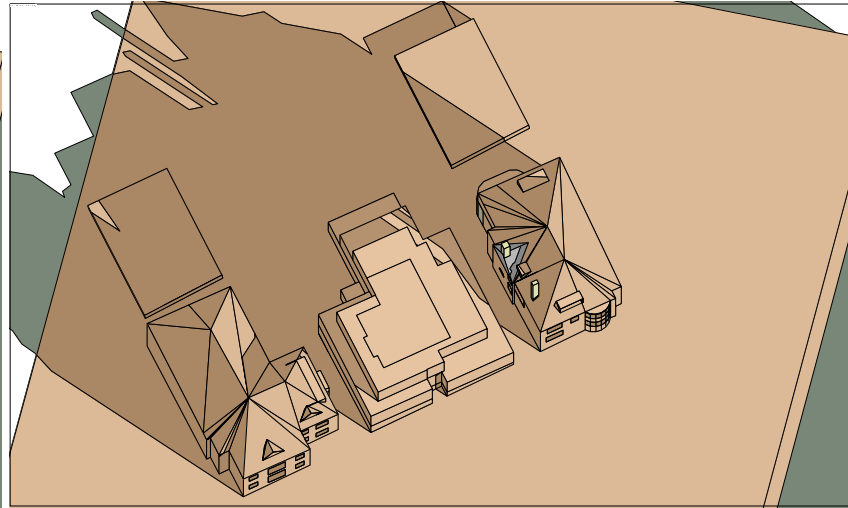
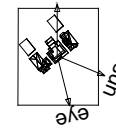
View time = 21 Mar 08:00  
Site Latitude = 51.55  
Longitude diff. = -0.19  
Model Bearing = 0.00  
Sun: azi = 112.72 alt = 16.55  
Eye: azi = 166.00 alt = 69.10



**Existing**

Suncast image:

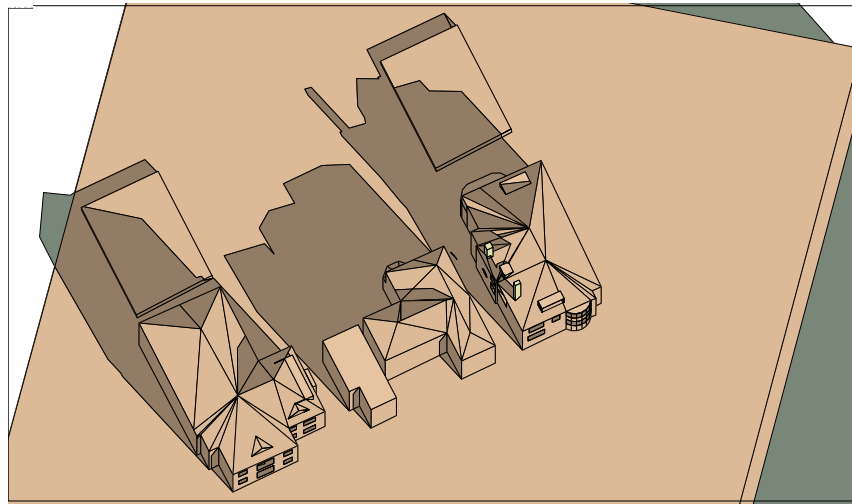
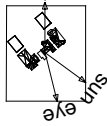
View time = 21 Mar 08:00  
Site Latitude = 51.55  
Longitude diff. = -0.19  
Model Bearing = 0.00  
Sun: azi = 112.72 alt = 16.55  
Eye: azi = 166.00 alt = 69.10



**Proposed**

Suncast image:

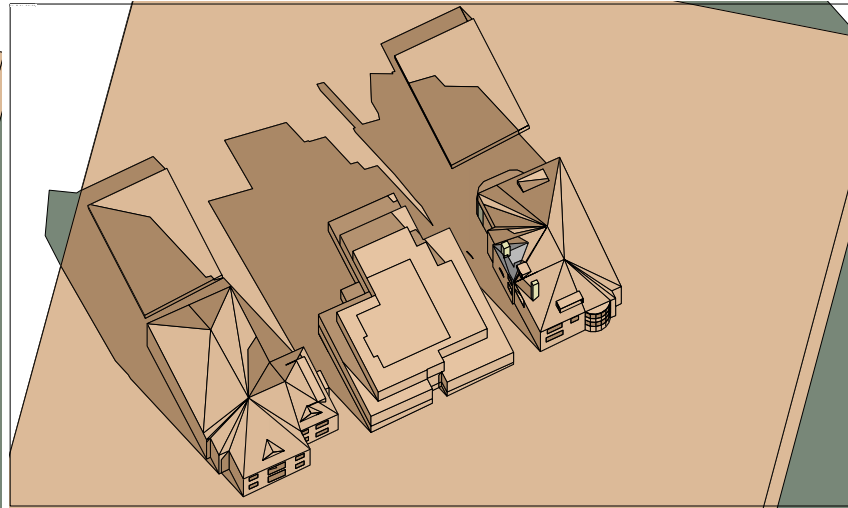
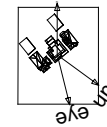
View time = 21 Mar 09:00  
 Site Latitude = 51.55  
 Longitude diff. = -0.19  
 Model Bearing = 0.00  
 Sun: azi = 126.22 alt = 24.67  
 Eye: azi = 166.00 alt = 69.10



**Existing**

Suncast image:

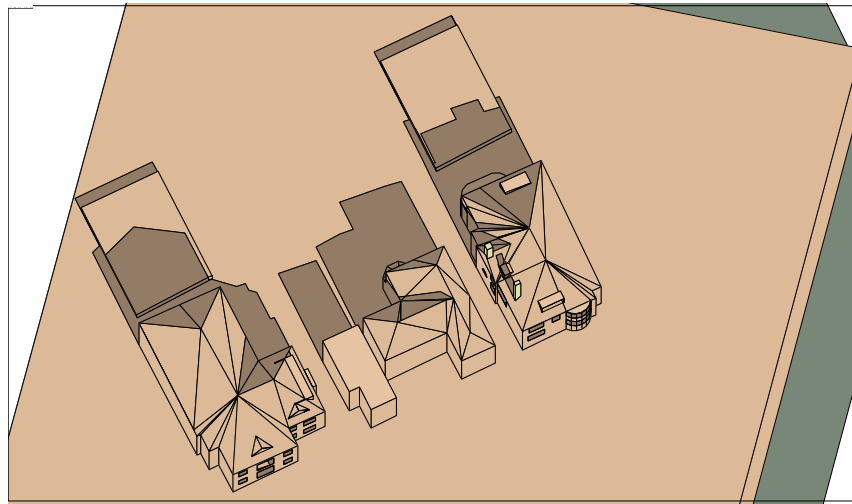
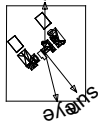
View time = 21 Mar 09:00  
 Site Latitude = 51.55  
 Longitude diff. = -0.19  
 Model Bearing = 0.00  
 Sun: azi = 126.22 alt = 24.67  
 Eye: azi = 166.00 alt = 69.10



**Proposed**

Suncast image:

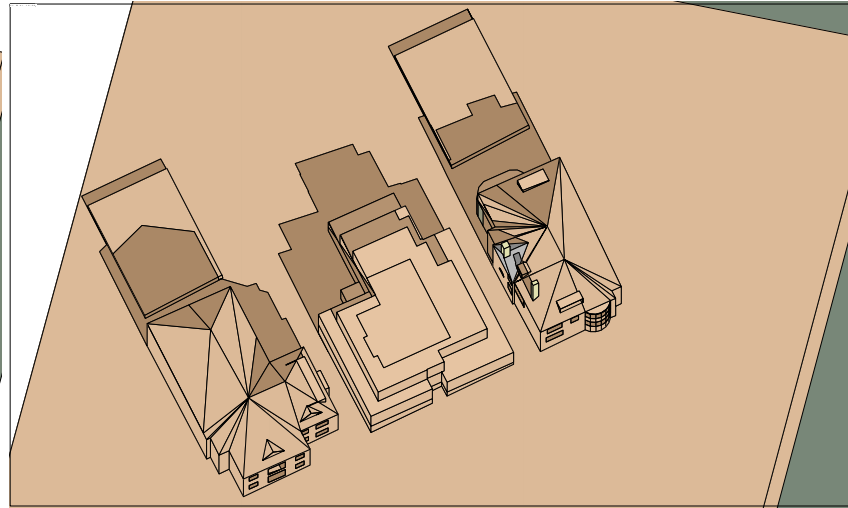
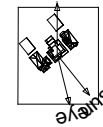
View time = 21 Mar 10:00  
Site Latitude = 51.55  
Longitude diff. = -0.19  
Model Bearing = 0.00  
Sun: azi = 141.44 alt = 31.39  
Eye: azi = 166.00 alt = 69.10



**Existing**

Suncast image:

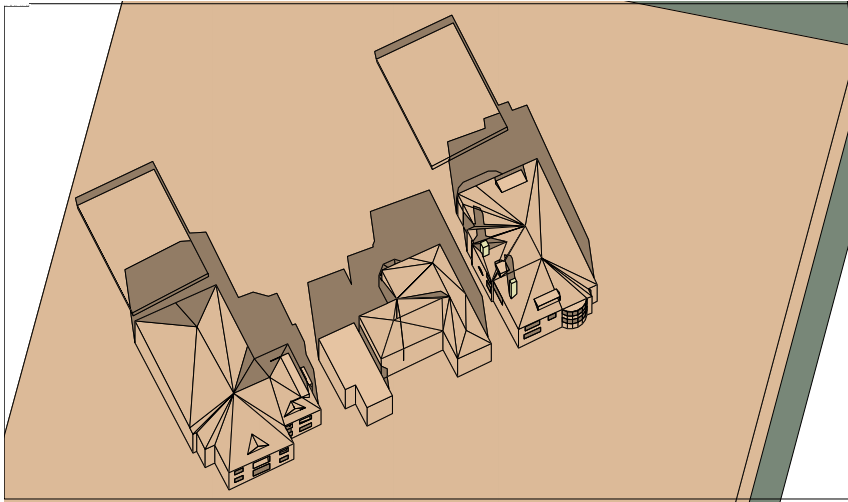
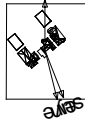
View time = 21 Mar 10:00  
Site Latitude = 51.55  
Longitude diff. = -0.19  
Model Bearing = 0.00  
Sun: azi = 141.44 alt = 31.39  
Eye: azi = 166.00 alt = 69.10



**Proposed**

Suncast image:

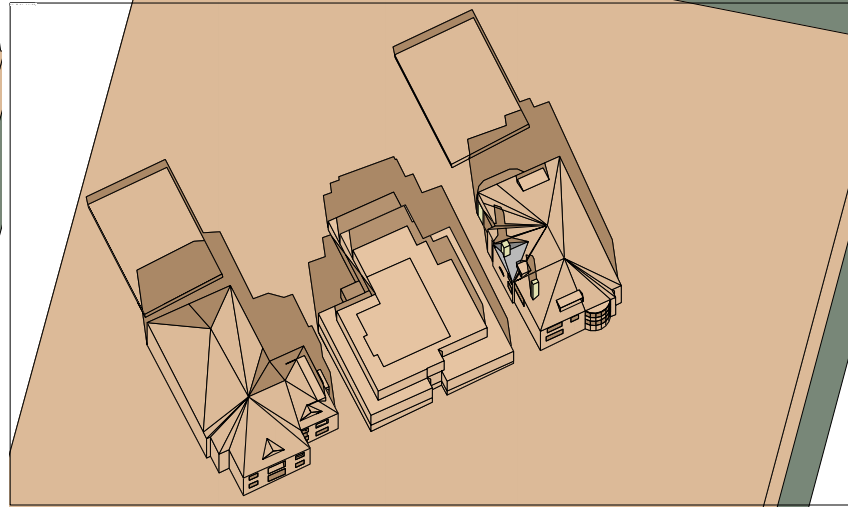
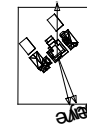
View time = 21 Mar 11:00  
Site Latitude = 51.55  
Longitude diff. = -0.19  
Model Bearing = 0.00  
Sun: azi = 158.61 alt = 36.06  
Eye: azi = 166.00 alt = 69.10



**Existing**

Suncast image:

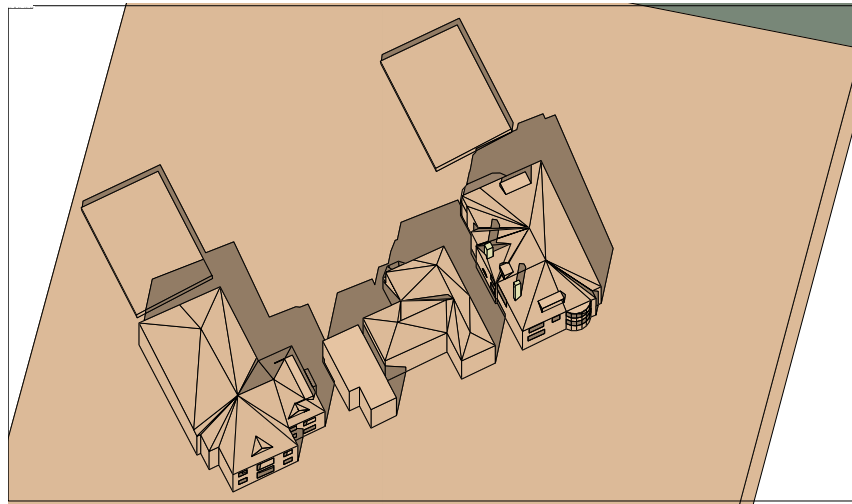
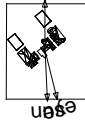
View time = 21 Mar 11:00  
Site Latitude = 51.55  
Longitude diff. = -0.19  
Model Bearing = 0.00  
Sun: azi = 158.61 alt = 36.06  
Eye: azi = 166.00 alt = 69.10



**Proposed**

Suncast image:

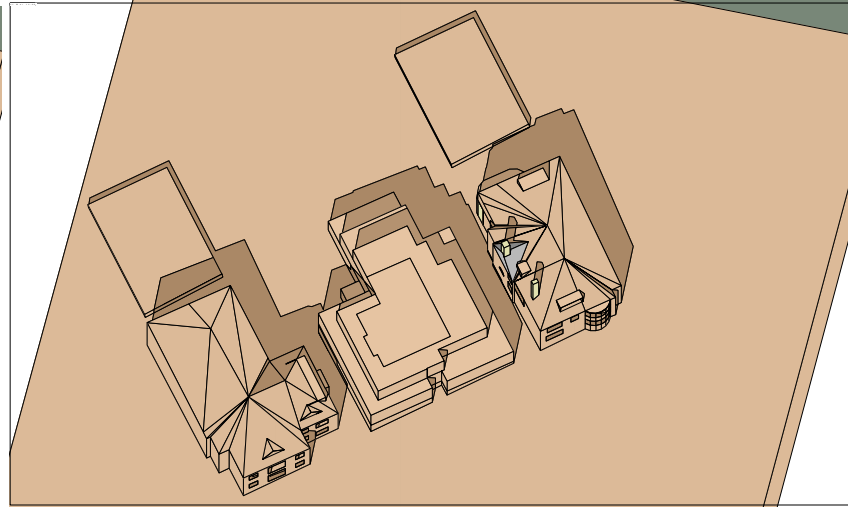
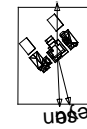
View time = 21 Mar 12:00  
 Site Latitude = 51.55  
 Longitude diff. = -0.19  
 Model Bearing = 0.00  
 Sun: azi = 177.27 alt = 38.01  
 Eye: azi = 166.00 alt = 69.10



**Existing**

Suncast image:

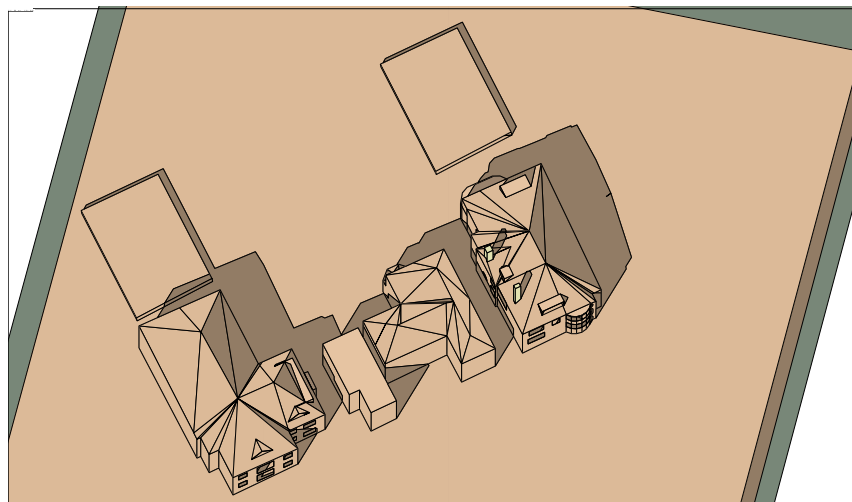
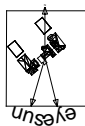
View time = 21 Mar 12:00  
 Site Latitude = 51.55  
 Longitude diff. = -0.19  
 Model Bearing = 0.00  
 Sun: azi = 177.27 alt = 38.01  
 Eye: azi = 166.00 alt = 69.10



**Proposed**

Suncast image:

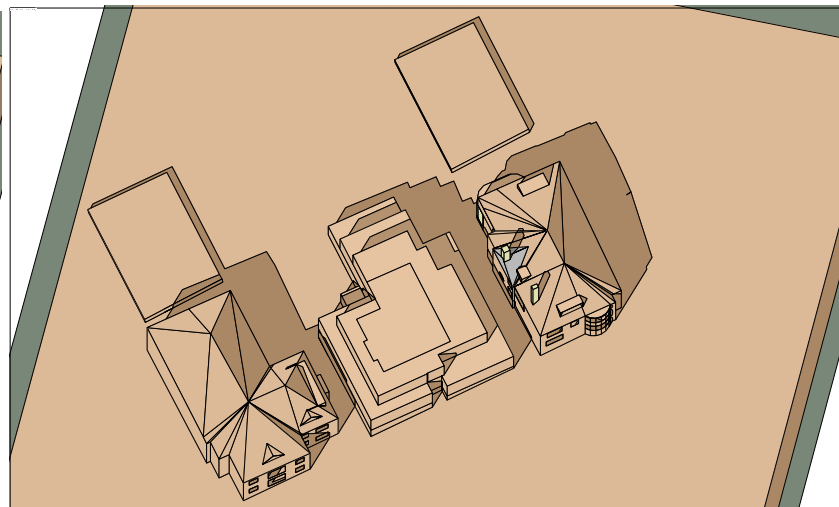
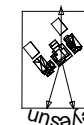
View time = 21 Mar 13:00  
Site Latitude = 51.55  
Longitude diff. = -0.19  
Model Bearing = 0.00  
Sun: azi = 196.15 alt = 36.92  
Eye: azi = 166.00 alt = 69.10



**Existing**

Suncast image:

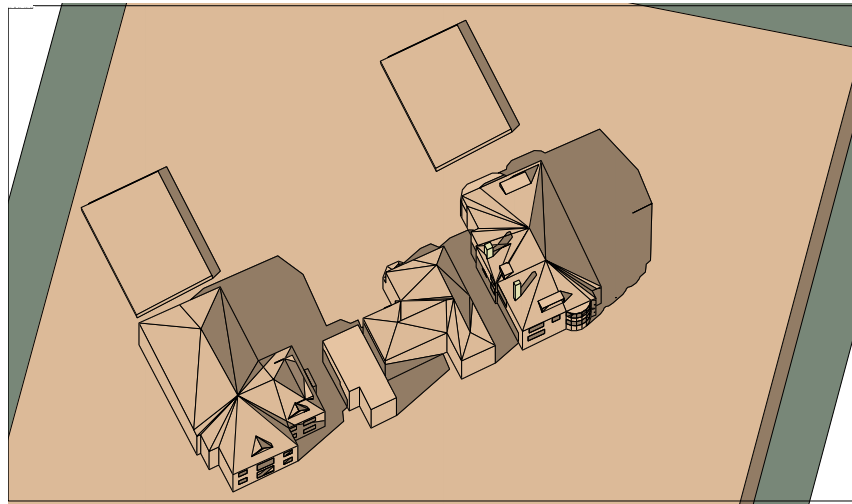
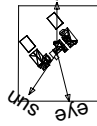
View time = 21 Mar 13:00  
Site Latitude = 51.55  
Longitude diff. = -0.19  
Model Bearing = 0.00  
Sun: azi = 196.15 alt = 36.92  
Eye: azi = 166.00 alt = 69.10



**Proposed**

Suncast image:

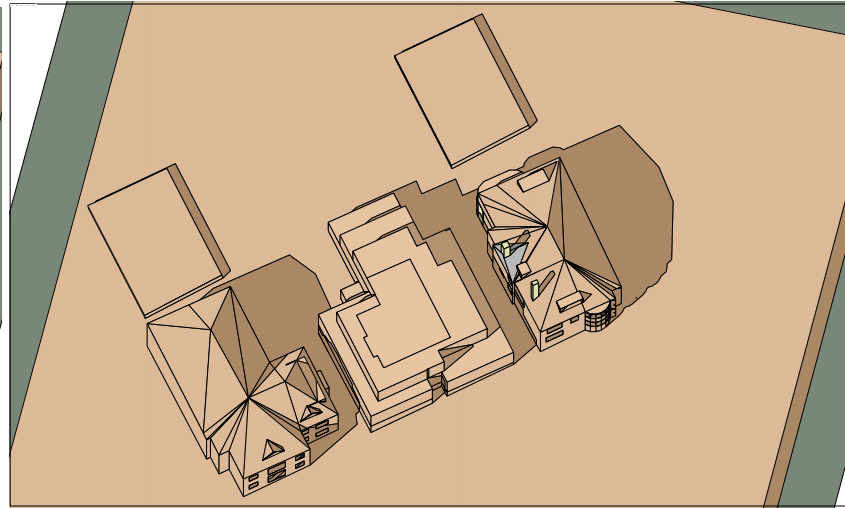
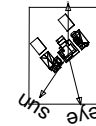
View time = 21 Mar 14:00  
Site Latitude = 51.55  
Longitude diff. = -0.19  
Model Bearing = 0.00  
Sun: azi = 213.84 alt = 32.97  
Eye: azi = 166.00 alt = 69.10



**Existing**

Suncast image:

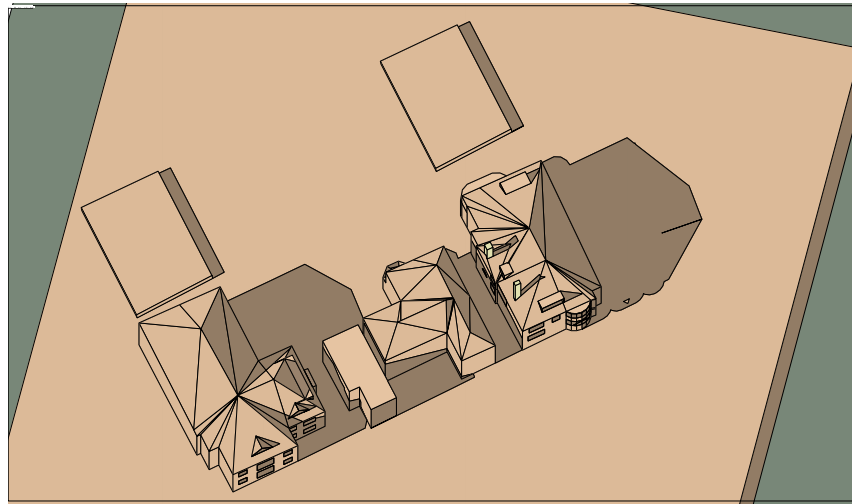
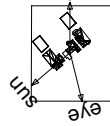
View time = 21 Mar 14:00  
Site Latitude = 51.55  
Longitude diff. = -0.19  
Model Bearing = 0.00  
Sun: azi = 213.84 alt = 32.97  
Eye: azi = 166.00 alt = 69.10



**Proposed**

Suncast image:

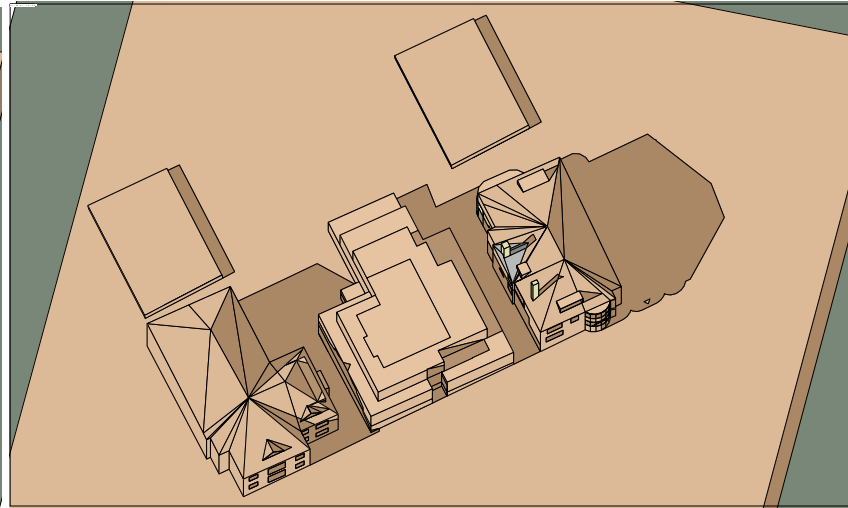
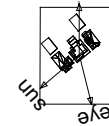
View time = 21 Mar 15:00  
 Site Latitude = 51.55  
 Longitude diff. = -0.19  
 Model Bearing = 0.00  
 Sun: azi = 229.61 alt = 26.76  
 Eye: azi = 166.00 alt = 69.10



**Existing**

Suncast image:

View time = 21 Mar 15:00  
 Site Latitude = 51.55  
 Longitude diff. = -0.19  
 Model Bearing = 0.00  
 Sun: azi = 229.61 alt = 26.76  
 Eye: azi = 166.00 alt = 69.10

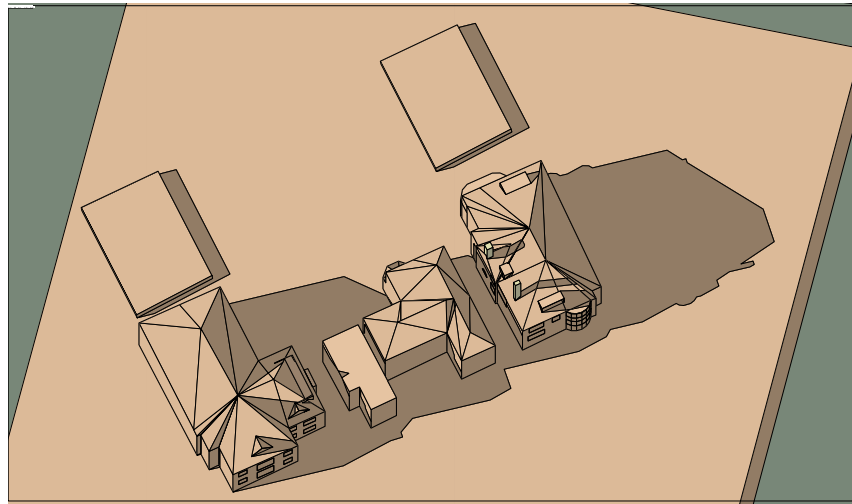
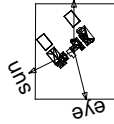


**Proposed**



Suncast image:

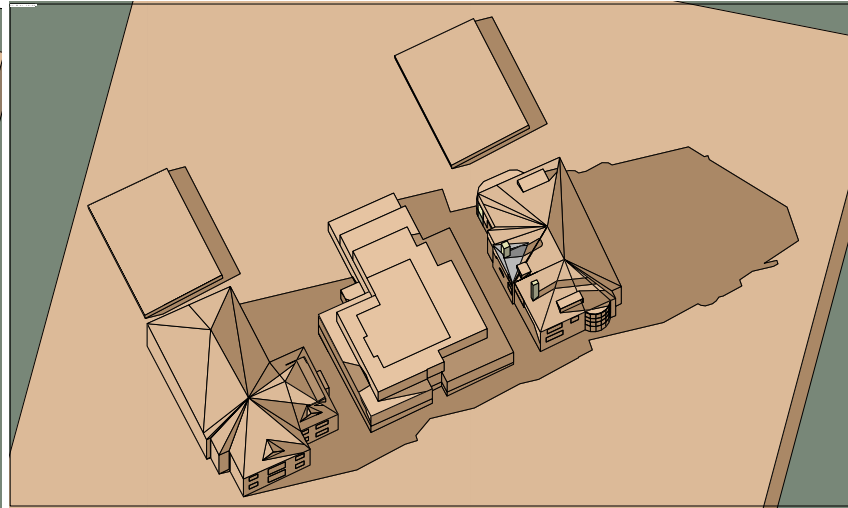
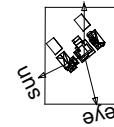
View time = 21 Mar 16:00  
Site Latitude = 51.55  
Longitude diff. = -0.19  
Model Bearing = 0.00  
Sun: azi = 243.55 alt = 18.98  
Eye: azi = 166.00 alt = 69.10



**Existing**

Suncast image:

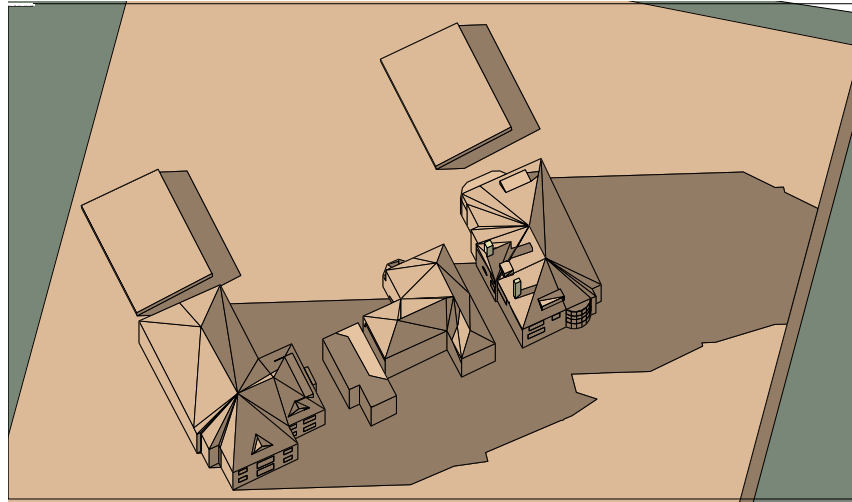
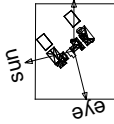
View time = 21 Mar 16:00  
Site Latitude = 51.55  
Longitude diff. = -0.19  
Model Bearing = 0.00  
Sun: azi = 243.55 alt = 18.98  
Eye: azi = 166.00 alt = 69.10



**Proposed**

Suncast image:

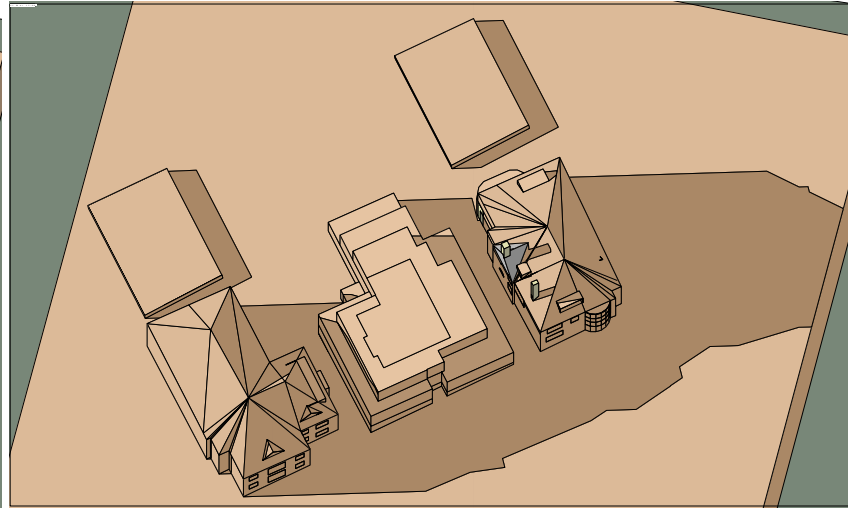
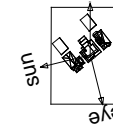
View time = 21 Mar 17:00  
Site Latitude = 51.55  
Longitude diff. = -0.19  
Model Bearing = 0.00  
Sun: azi = 256.16 alt = 10.24  
Eye: azi = 166.00 alt = 69.10



**Existing**

Suncast image:

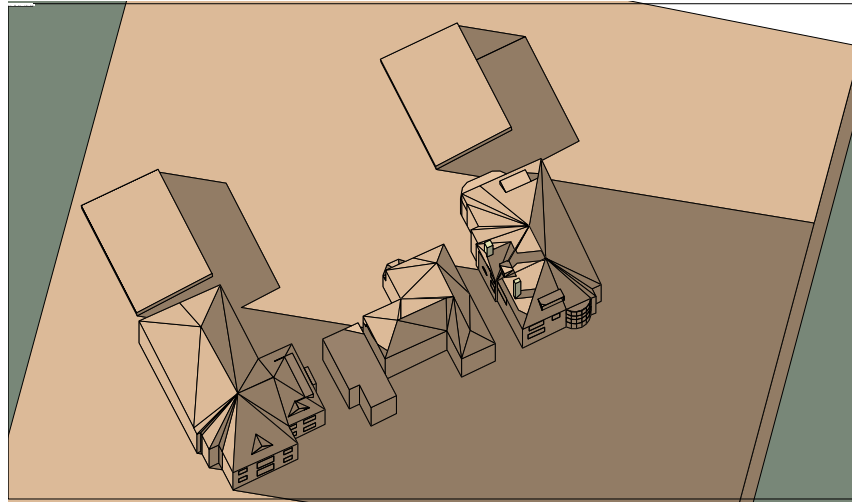
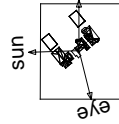
View time = 21 Mar 17:00  
Site Latitude = 51.55  
Longitude diff. = -0.19  
Model Bearing = 0.00  
Sun: azi = 256.16 alt = 10.24  
Eye: azi = 166.00 alt = 69.10



**Proposed**

Suncast image:

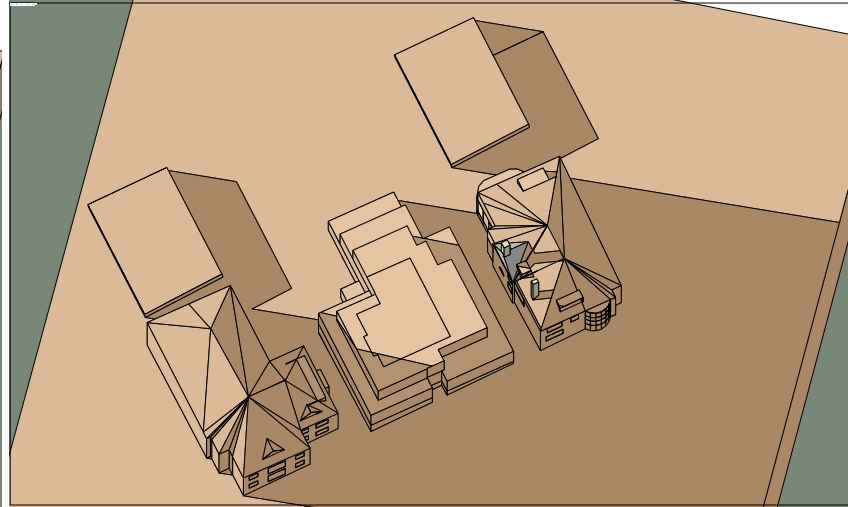
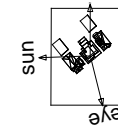
View time = 21 Mar 18:00  
Site Latitude = 51.55  
Longitude diff. = -0.19  
Model Bearing = 0.00  
Sun: azi = 268.06 alt = 1.02  
Eye: azi = 166.00 alt = 69.10



**Existing**

Suncast image:

View time = 21 Mar 18:00  
Site Latitude = 51.55  
Longitude diff. = -0.19  
Model Bearing = 0.00  
Sun: azi = 268.06 alt = 1.02  
Eye: azi = 166.00 alt = 69.10



**Proposed**