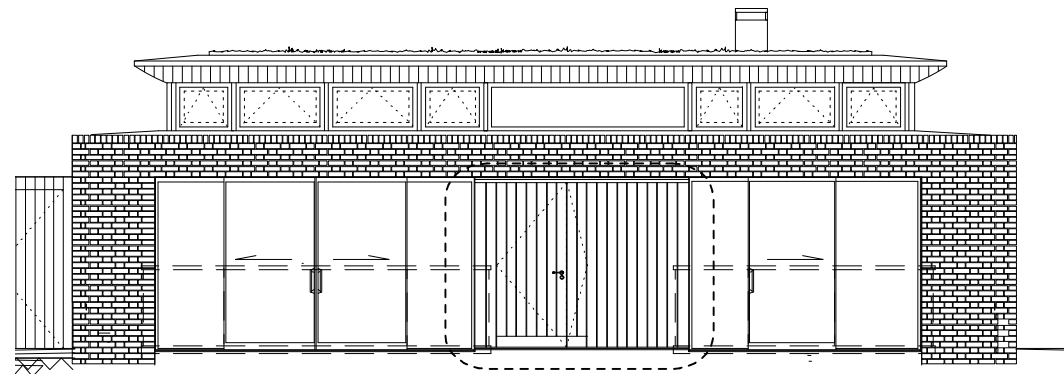


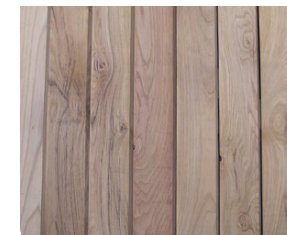
Section detail 1:10



Front Elevation 1:100



Polyester
Powder-coated
RAL 7016



Sweet Chestnut
vertical cladding

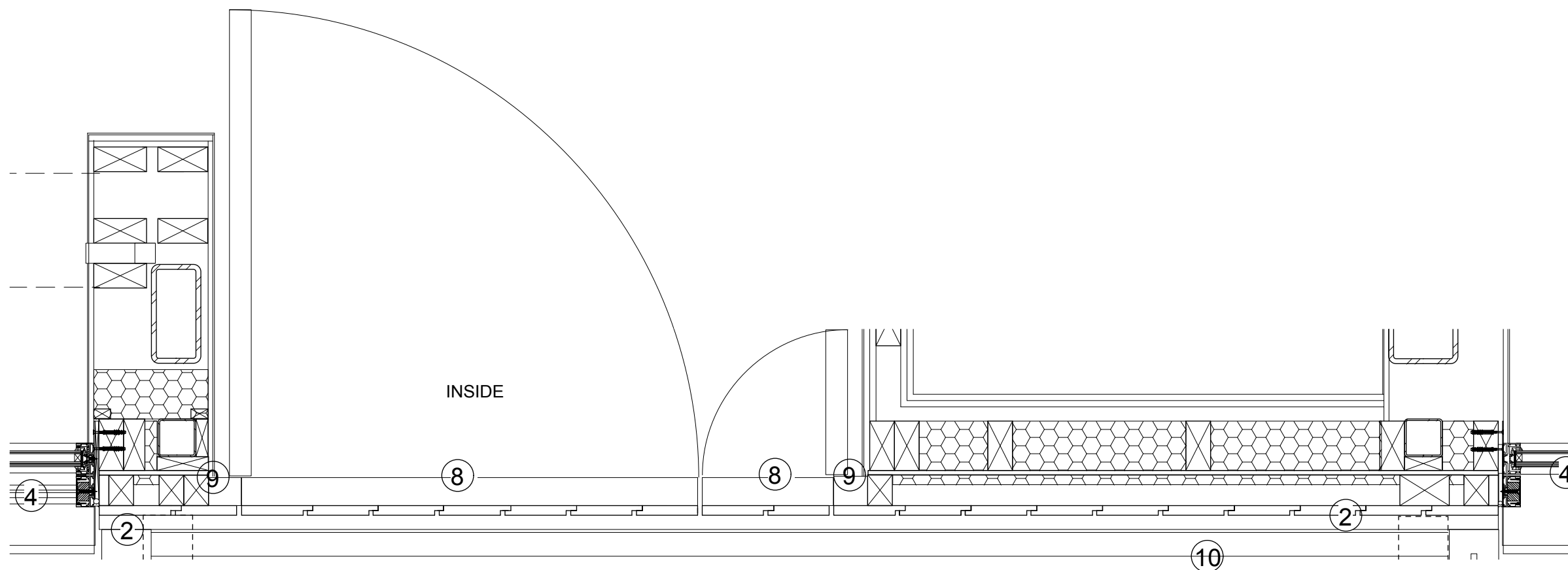


Bronze coloured
kickplate

Materials

Key

1. Brick
2. Metal flashing secretly fixed
Polyester powder coated to RAL 7016
3. Sweet chestnut timber secretly fixed
vertical cladding
4. Fineline system 22 sliding panel
Polyester powder coated to RAL 7016
5. Bronze coloured ironmongery
6. Bronze coloured kickplate
7. Hardwood cill
8. Timber door clad in sweet chestnut
vertical cladding. Finish: Sikksens Colourless
coating (As per signed off condition 2)
Door certified to PAS 24:2007
9. Timber frame
10. Surface water drain



Plan detail 1:10

OUTSIDE

PLANNING

Copyright for these drawings remains with
Cove Burgess Architects LLP. All dimensions to
be checked on site prior to construction. Any
discrepancies to be brought to the attention of the
architect, prior to construction.

Project Title
Underground House
Elsworthy Road Garage Site
Primrose Hill
London NW3
Sheet Title

Front door details- Plan, section details

Scale 1:10 @ A3

Drawing No. 10014_P266

Revision

COVEBURGESS