

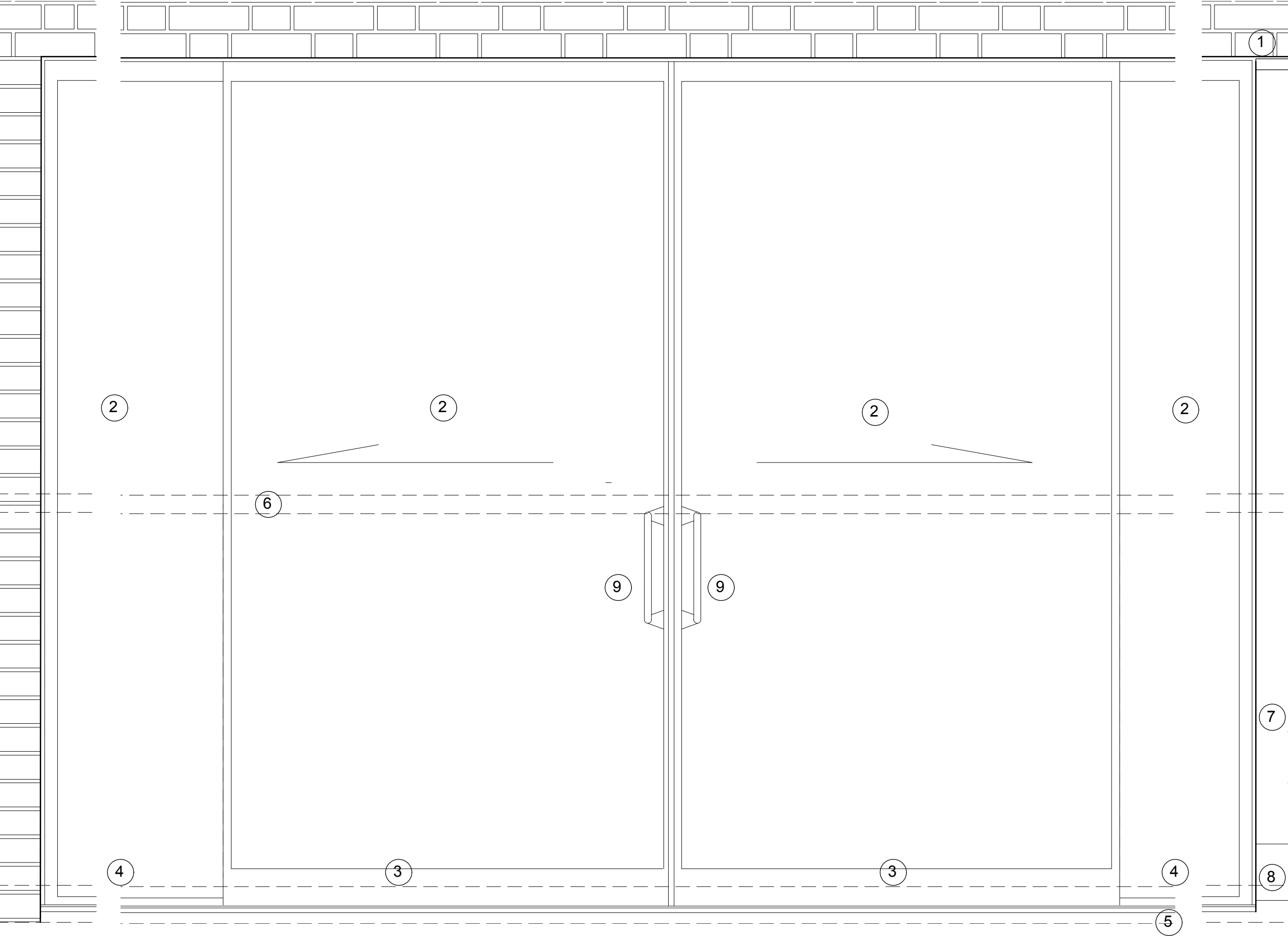
- Key**
- 1. Brick
 - DOORS:
Finish to all Polyester powdercoated
 - 2. Double glazed unit clear glass
 - 3. Fineline system 22 sliding panel
 - 4. Fineline system 22 fixed panel
 - 5. Cill
 - 6. Timber Handrail with glass balustrade panels
 - 7.Vertical Timber cladding, secretly fixed
 - 8. Metal Kickplate
 - 9. Metal Handle to match Fineline frames

PLANNING

Copyright for these drawings remains with Cove Burgess Architects LLP. All dimensions to be checked on site prior to construction. Any discrepancies to be bought to the attention of the architect, prior to construction.

Project Title	Underground House Elsworthy Road Garage Site Primrose Hill London NW3
Sheet Title	Front Elevation- Window WN_10
Scale	1:10 @ A3

Drawing No. 10014_P260 Revision -



Key

- 1. Brick
- DOORS:
Finish to all Polyester powdercoated
- 2. Double glazed unit clear glass
- 3. Fineline system 22 sliding panel
- 4. Fineline system 22 fixed panel
- 5. Cill
- 6. Timber Handrail with glass balustrade panels
- 7. Vertical Timber cladding, secretly fixed
- 8. Metal Kickplate
- 9. Metal Handle to match Fineline frames

7 PLANNING

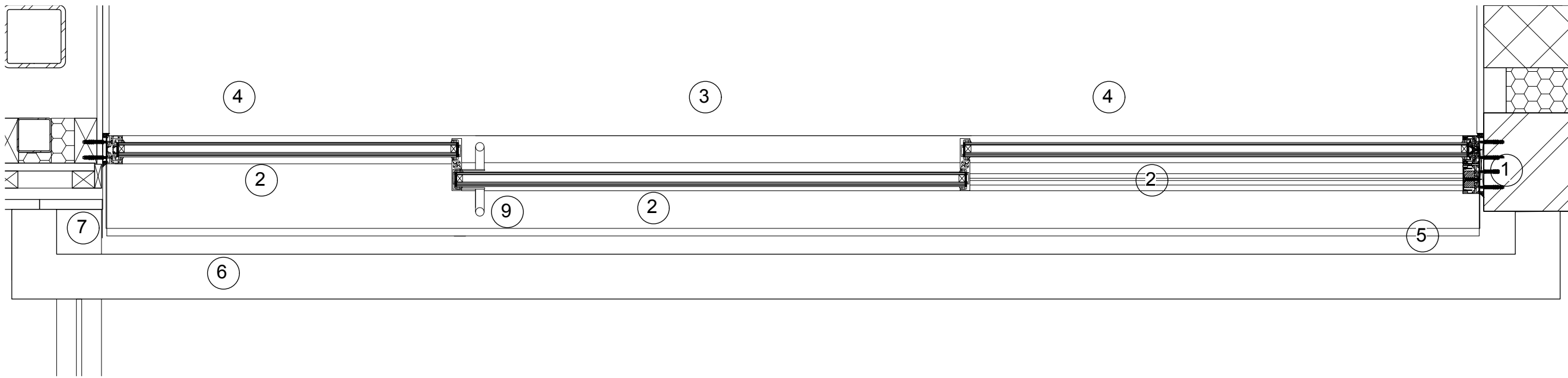
Copyright for these drawings remains with Cove Burgess Architects LLP. All dimensions to be checked on site prior to construction. Any discrepancies to be bought to the attention of the architect, prior to construction.

Project Title Underground House
Elsworthy Road Garage Site
Primrose Hill
London NW3

Sheet Title Front Elevation-
Window WN_09

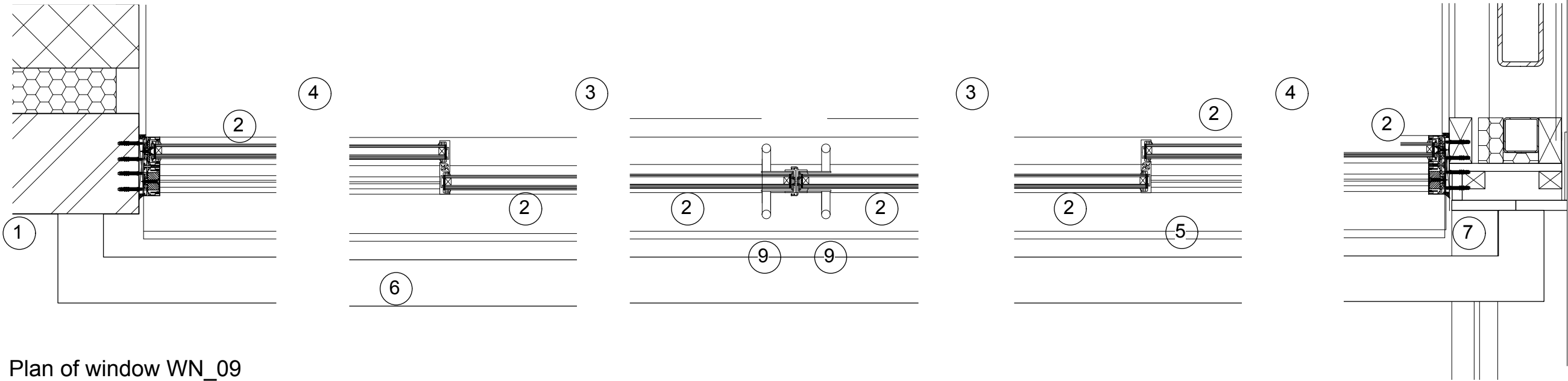
Scale 1:10 @ A3

Drawing No. 10014_P261 Revision -



Plan of window_ WN_10

- Key**
- 1. Brick
 - DOORS:
Finish to all Polyester powdercoated
 - 2. Double glazed unit clear glass
 - 3. Fineline system 22 sliding panel
 - 4. Fineline system 22 fixed panel
 - 5. Cill
 - 6. Timber Handrail with glass balustrade panels
 - 7.Vertical Timber cladding, secretly fixed
 - 8. Metal Kickplate
 - 9. Metal Handle to match Fineline frames

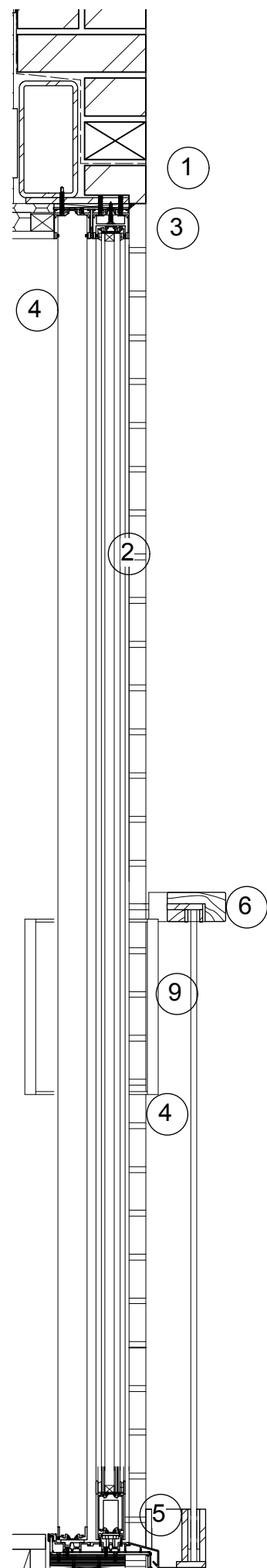


Plan of window WN_09

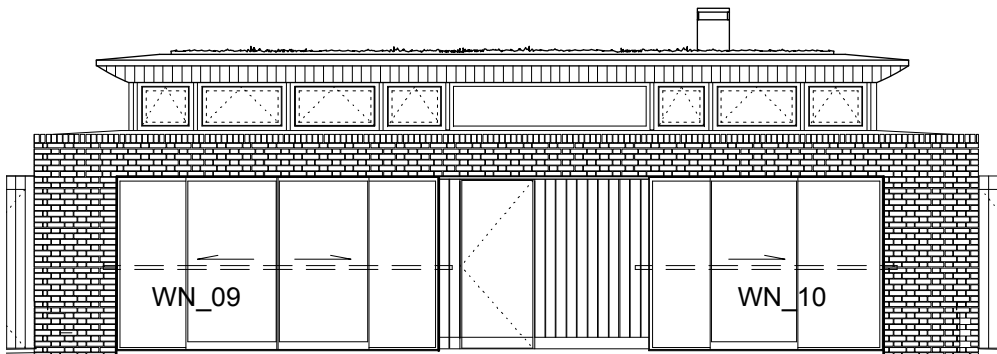
PLANNING

Copyright for these drawings remains with Cove Burgess Architects LLP. All dimensions to be checked on site prior to construction. Any discrepancies to be bought to the attention of the architect, prior to construction.

Project Title	Underground House Elsworthy Road Garage Site Primrose Hill London NW3
Sheet Title	PLAN- Window WN_09 Window WN_10
Scale	1:10 @ A3
Drawing No.	10014_P262
Revision	-



Section 1:10 @ A3



Front Elevation at 1:100



3.,4.,5. Fineline 22 Frames- RAL 7016



Images of Fineline System 22

Key:

1. Brick
- DOORS:
Finish to all Polyester powdercoated
2. Double glazed unit clear glass
3. Fineline system 22 sliding panel
4. Fineline system 22 fixed panel
5. Cill
6. Timber Handrail with glass balustrade panels
7. Vertical Timber cladding, secretly fixed
8. Metal Kickplate
9. Metal Handle to match Fineline frames

PLANNING

Copyright for these drawings remains with Cove Burgess Architects LLP. All dimensions to be checked on site prior to construction. Any discrepancies to be bought to the attention of the architect, prior to construction.

Project Title	Underground House Elsworthy Road Garage Site Primrose Hill London NW3
Sheet Title	Winter garden Window Details Section WN09/10
Scale	1:10 @ A3
Drawing No.	10014_P263
Revision	-

COVEBURGESS