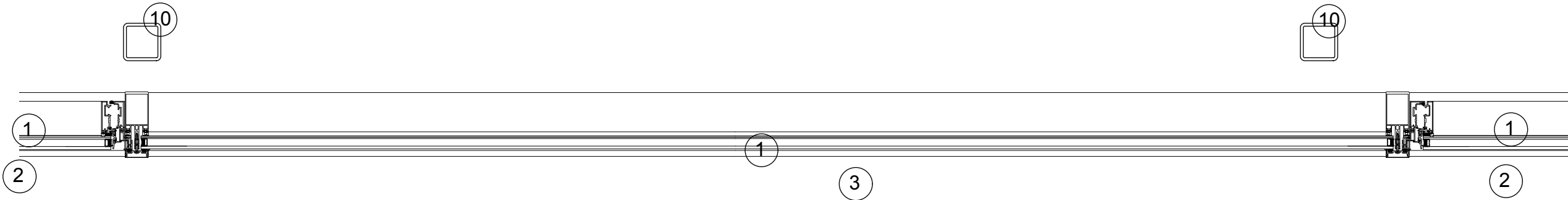


Clerestory Window Elevation 1:10 @ A3

Key

- 1. Double glazed unit clear glass
- 2. Schuco AWS102 Opening light  
Finish to frame: Polyester Powder Coated
- 3. Schuco FW50 Fixed Light  
Finish to frame: Polyester Powder Coated
- 4. Cill
- 5. Vertical timber cladding  
secretely fixed
- 6. Zinc Roof
- 7. Brick
- 8. Double glazed unit obscured glazing
- 9. Corner panel polyester powder coated
- 10. Internal steel support to roof



Clerestory Window Plan 1:10 @ A3

PLANNING

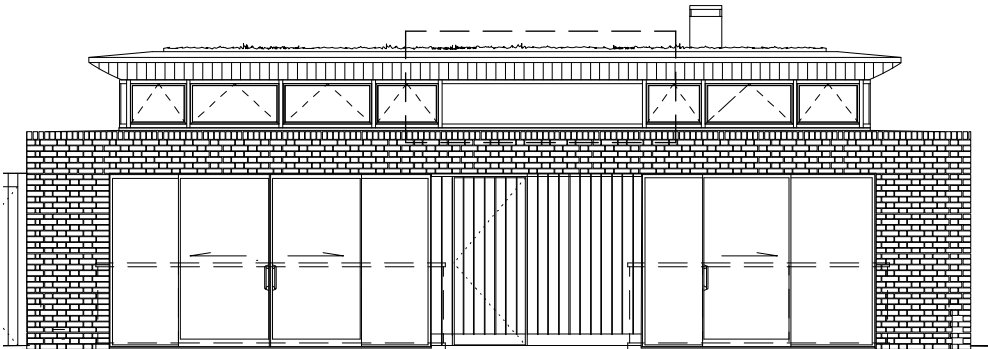
Copyright for these drawings remains with Cove Burgess Architects LLP. All dimensions to be checked on site prior to construction. Any discrepancies to be bought to the attention of the architect, prior to construction.

Project Title Underground House  
Elsworthy Road Garage Site  
Primrose Hill  
London NW3

Sheet Title Front Elevation-  
Clerestory Fixed Light  
Elevation & Plan

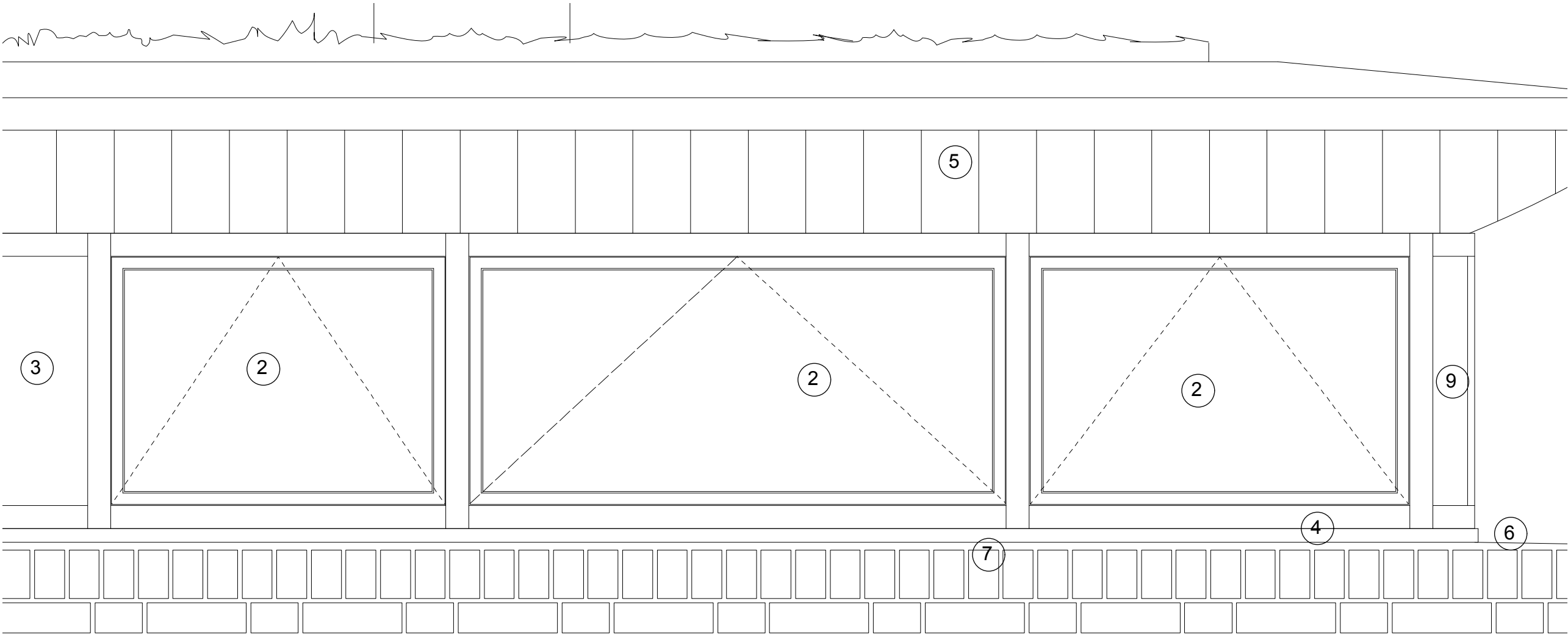
Scale 1:10 @ A3

Drawing No. 10014\_P264 Revision -

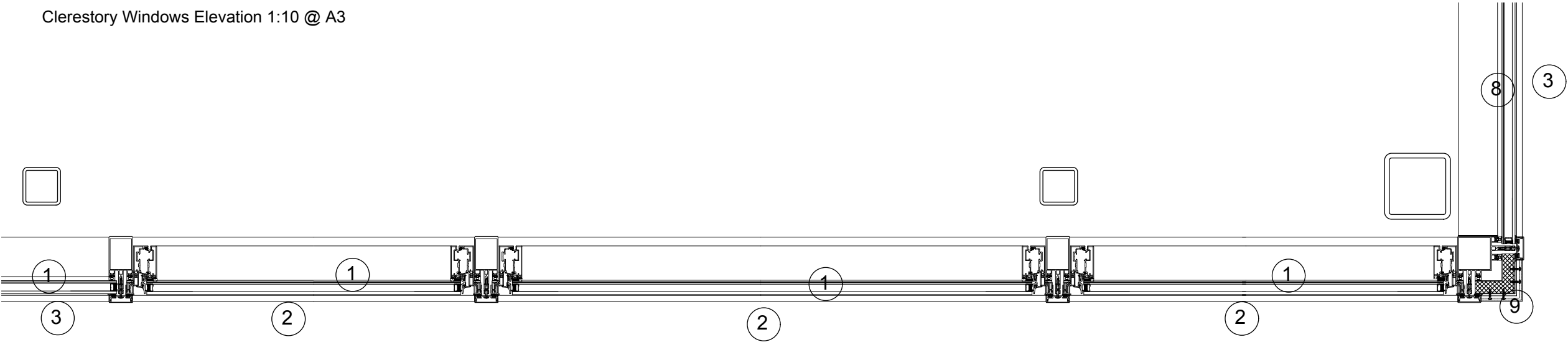


Front Elevation 1:100 @ A3

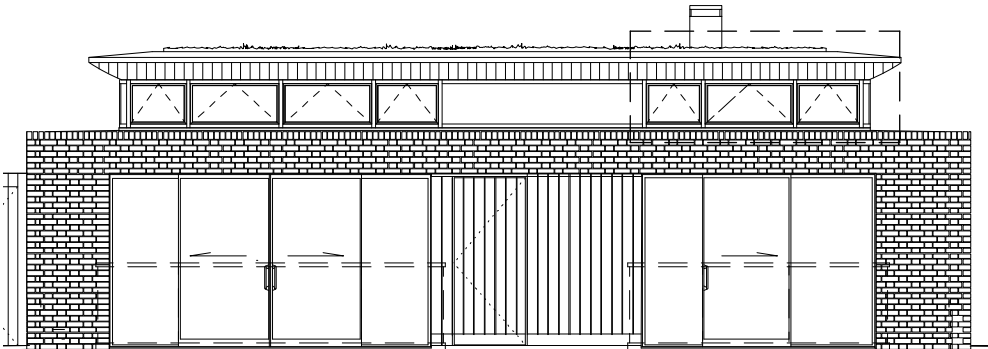
COVEBURGESS



Clerestory Windows Elevation 1:10 @ A3



Clerestory Windows Plan 1:10 @ A3



Front Elevation 1:100 @ A3

Key

- 1. Double glazed unit clear glass
- 2. Schuco AWS102 Opening light  
Finish to frame: Polyester Powder Coated
- 3. Schuco FW50 Fixed Light  
Finish to frame: Polyester Powder Coated
- 4. Cill
- 5. Vertical timber cladding  
secretely fixed
- 6. Zinc Roof
- 7. Brick
- 8. Double glazed unit obscured  
glazing
- 9. Corner panel polyester powder  
coated

PLANNING

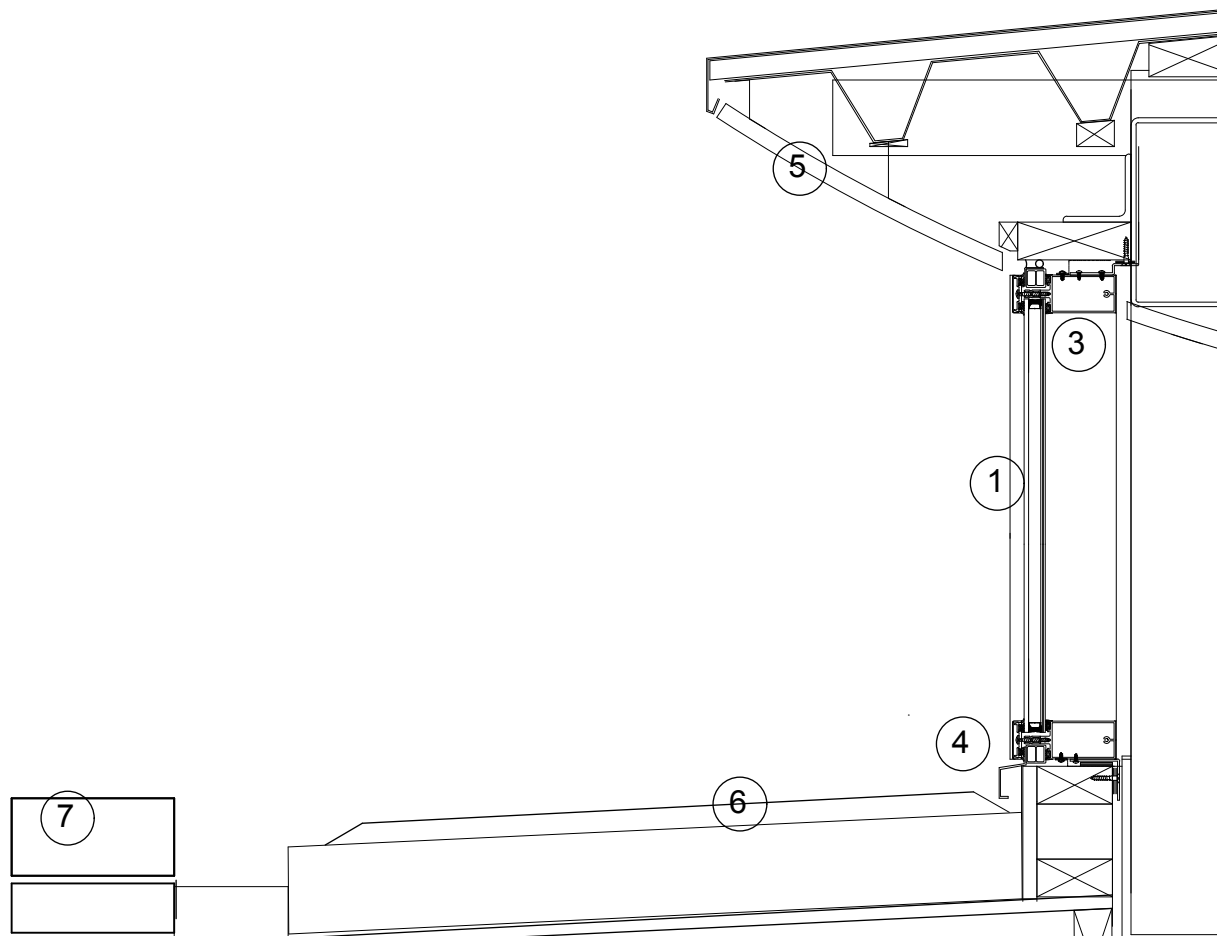
Copyright for these drawings remains with Cove Burgess Architects LLP. All dimensions to be checked on site prior to construction. Any discrepancies to be bought to the attention of the architect, prior to construction.

Project Title Underground House  
Elsworthy Road Garage Site  
Primrose Hill  
London NW3

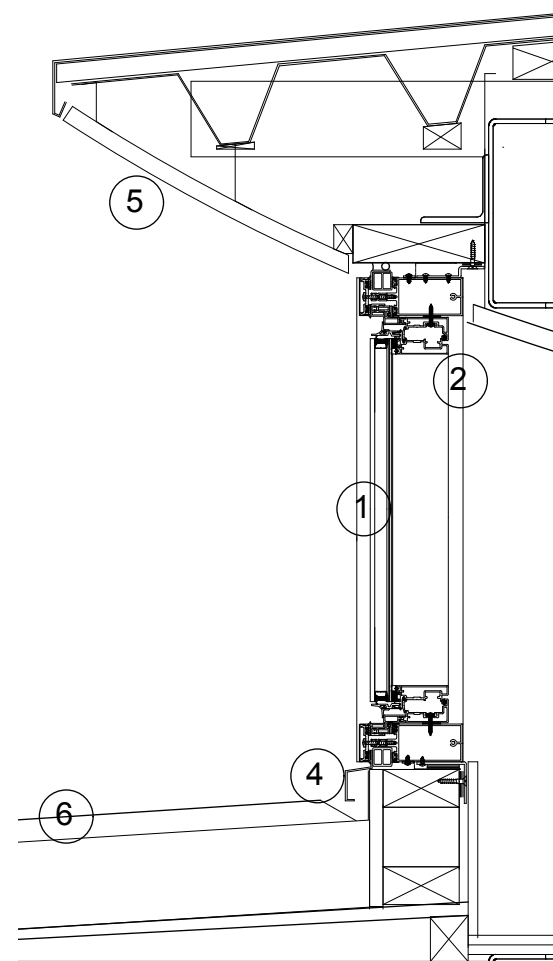
Sheet Title Front Elevation-  
Clerestory Opening Windows  
Elevation & Plan

Scale 1:10 @ A3

Drawing No. 10014\_P265 Revision -



Clerestory Fixed Light Section 1:10 @ A3



Clerestory Opening Light Section 1:10 @ A3

## Key

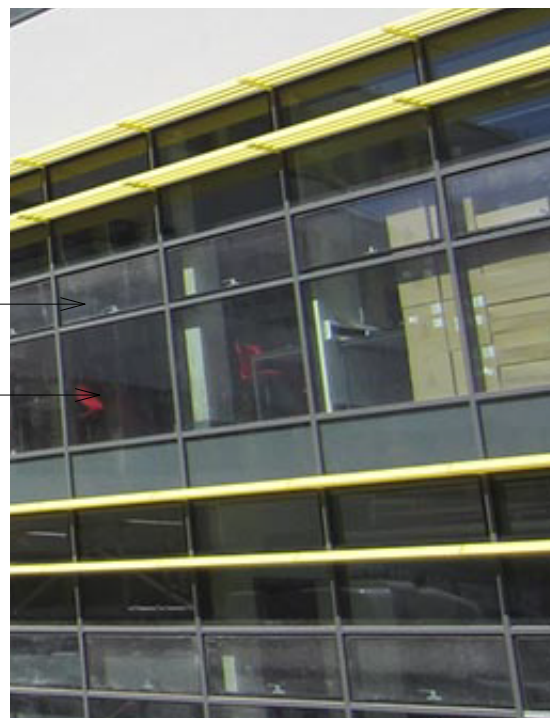
1. Double glazed unit clear glass
2. Schuco AWS102 Opening light  
Finish to frame: Polyester Powder Coated
3. Schuco FW50 Fixed Light  
Finish to frame: Polyester Powder Coated
4. Cill
5. Vertical timber cladding  
secretely fixed
6. Zinc Roof
7. Brick
8. Double glazed unit obscured glazing
9. Corner panel polyester powder coated



2,3,4 & 8 Schuco Frames- RAL 7016

Opening light →

Fixed light →



Photograph of Schuco AWS102 opening light and FW50 fixed light

## PLANNING

Copyright for these drawings remains with Cove Burgess Architects LLP. All dimensions to be checked on site prior to construction. Any discrepancies to be brought to the attention of the architect, prior to construction.

Project Title Underground House  
Elsworthy Road Garage Site  
Primrose Hill  
London NW3

Sheet Title Front Elevation-  
Clerestory Opening Windows  
Sections

Scale 1:10 @ A3

Drawing No. 10014\_P266 Revision -

COVEBURGESS