

Scale converter			
A1 Scale - A3 Scale		A1 Scale - A3 Scale	
1:1	1:2	1:5	1:10
1:10	1:20	1:25	1:50
1:50	1:100	1:100	1:200
1:250	1:500		
REV	DATE	AMENDMENT	

SECTION A - A



All existing windows being retained. Allow for overhaul of ironmongery, replacement of any broken glass etc. All windows to be thoroughly sanded down and repainted, 1 coat u/coat, 1 coat primer, 2 coats satin finish (use external grade on outside). Colour TBC.

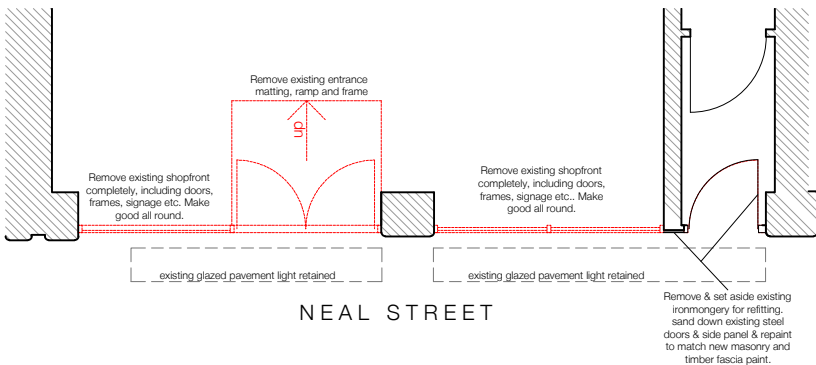
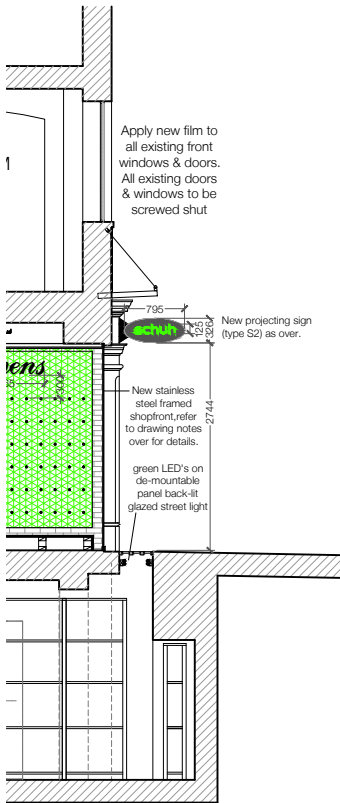
Repair damaged corner to decorative capital

New logo sign and fixed to fascia band. Letters to be halo illuminated only. Sign type S3) as over.

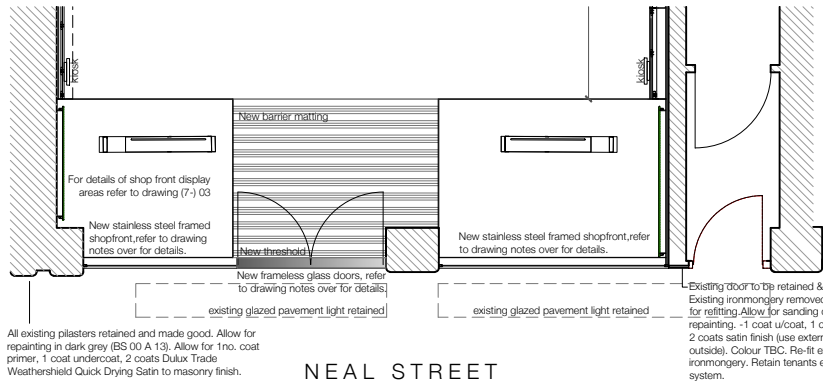
New stainless steel framed shopfront, refer to drawing notes over for details.

New frameless glass doors, refer to drawing notes over for details.

Existing pilasters and fascia band to be retained and made good. Allow for repainting in dark grey (BS 00 A 13). Allow for 1no. coat primer, 1 coat undercoat, 2 coats Dulux Trade Weathershield Quick Drying Satin to masonry finish.



NEAL STREET



NEAL STREET

SHOPFRONT GLAZING SPECIFICATION

Shopfront manufacturer / installer to carry out full site survey of shop front aperture.

Shopfront installer to complete detail design and provide full working drawings and structural details / deflection calculations for comment / approval prior to manufacture.

New stainless steel framed shopfront with min12mm toughened glazing to shopfront. Max 25mm stainless steel channel to be visible at base and head.

NOTE - SHOPFRONT SUPPLIER MUST OBTAIN SITE SIZES, COMPLETE DETAIL DESIGN AND GLASS SPECIFICATION AND PROVIDE DRAWING FOR APPROVAL PRIOR TO FABRICATION. DESIGN MUST INCLUDE FOR GLASS REPLACEMENT METHOD POST COMPLETION. SHOP FRONT GLASS MUST BE 12mm TOUGHENED GLASS MIN. THE SHOP FRONT SUPPLIER WILL BE WHOLLY RESPONSIBLE FOR DETERMINING THE CORRECT THICKNESS OF GLASS REQUIRED TO SUIT THE SHEET SIZE AND LOCATION.

- All glazing to comply with BS 6262 part 4 2005 and BS 6206: 1981.
- The shopfront glazing must also comply with the following requirements:
 - Where glass fin supports are required for shopfront glazing (i.e. to comply with Building Regulations and Codes of Practice for the UK), they should be taken from the Ceiling
 - Only clear silicone is to be used on glazing and their associated channels and framework
 - All shopfront elements must be securely fixed back to building structure via bracing or support systems unless items are self supporting, 20mm vertical deflection must be allowed for within design of the shopfront elements including sliding door tracks and swing doors etc
 - The contractor is not to fix to or alter the Landlord's bulkhead, ceilings or services and shall not affect the operation of any of the Developer's Works including, but not limited to the mail services, in particular those located within or adjacent to the shopfront bulkhead
 - Cleaning of Glazing - cleaning to be generally in accordance with clause 8 of BS 8213: part 1: 2004.

New frameless glass shopfront doors to be min 10mm clear toughened glass. Doors to have stainless steel hinge patch fittings, hold open mechanism and central lock fully unobstructed by door handles to allow comfortable use by store staff in addition to locks at bottom rails. Doors should also have 1200mm long bolt thro' pull handles to both sides (both sides of glass). Doors to have DDA compliant threshold fitted full width between floor spring covers. All ironmongery stainless steel.

SHOP FRONT SIGNAGE: INDIVIDUAL LETTERS (TYPE S1)
Individual 'schuh' letters to be built up (50mm deep) polished stainless steel letters c/w solid Green acrylic letter faces, and back lit halo illumination. Green acrylic faces to be 3mm wider than built up returns all round. Rear face formed from 5mm thick TT32 opal acrylic back trays fitted into face of letter carrying Tetra mini max gen 2 white LED's to follow the shape of the letter. Letters to be stood off from fascia band via 25mm stand-off locator fixings with colour match tube sleeve (dark grey as shop front). All screws to be stainless steel dome head screws where visible. Refer to signage specification document for full details. All illumination will not exceed 600 candelas/m².

SHOP FRONT PROJECTING SIGN (TYPE S2)
Double sided projecting oval logo with 100mm deep returns formed from satin s/s casing with mirror polished s/s bezel retaining a clear acrylic back panel overlaid with matt black self adhesive vinyl. Letters formed from 10mm clear acrylic with solid green acrylic faces to allow halo illumination of the letters only. Sign to be supplied and installed by signage manufacturer. All fixings to all to be concealed. Refer to detail drawing for full specification. All illumination will not exceed 600 candelas/m².

SHOP FRONT SIGNAGE: OVAL LOGO (TYPE S3)
New oval logo sign with halo illuminated letters semi suspended from fascia band. sign type S3. Approx dimensions w/h: 725 x 255mm x with 75mm deep returns formed from satin s/s casing with mirror polished s/s bezel retaining a clear acrylic back panel overlaid with self adhesive black vinyl, set back approx 50mm within depth of bezel to accommodate depth of letters. Letters to be built up (50mm deep) polished stainless steel letters c/w solid Green acrylic letter faces, and back lit halo illumination. Green acrylic faces to be 3mm wider than built up returns all round. Rear face formed from 5mm thick TT32 opal acrylic back trays fitted into face of letter carrying Tetra mini max gen 2 white LED's to follow the shape of the letter. Letters to be stood off from black oval panel via 25mm stand-off locator fixings with colour match tube sleeve (black as oval). All screws to be stainless steel dome head screws where visible. Refer to signage specification document for full details. All illumination will not exceed 600 candelas/m².

A 13.12.13
Oval sign added to fascia. Individual letters moved to opposite end of fascia. Downtaking shown. Plan shown. Section details updated.

B 06.01.2014
Oval sign increased and changed to semi suspended

C 13.02.2014
BS 6206 1981 added

D 24.02.14
Projecting sign changed from internally illuminated to halo illuminated. Fascia oval sign changed from internally illuminated to halo lit letters only. Individual letters changed from internally illuminated to halo lit only as per comments received by email from Planning Authority on 18 February 2014.

oberlanders

Project Name
Schuh Limited
30-32 Neal Street
Covent Garden,

Title
Elevation to Neal Street
As proposed

Status
Planning

Project no. - Drawing no. - Revision
1875-(0)- 07-D

Drawn By
SH

Drawn Date

Scale (s) @ A1
1:50

Oberlanders Architects LLP
16 Melville Street Edinburgh EH3 7NS
T 0131 225 9070
F 0131 220 3783
E mail@oberlanders.co.uk
www.oberlanders.co.uk