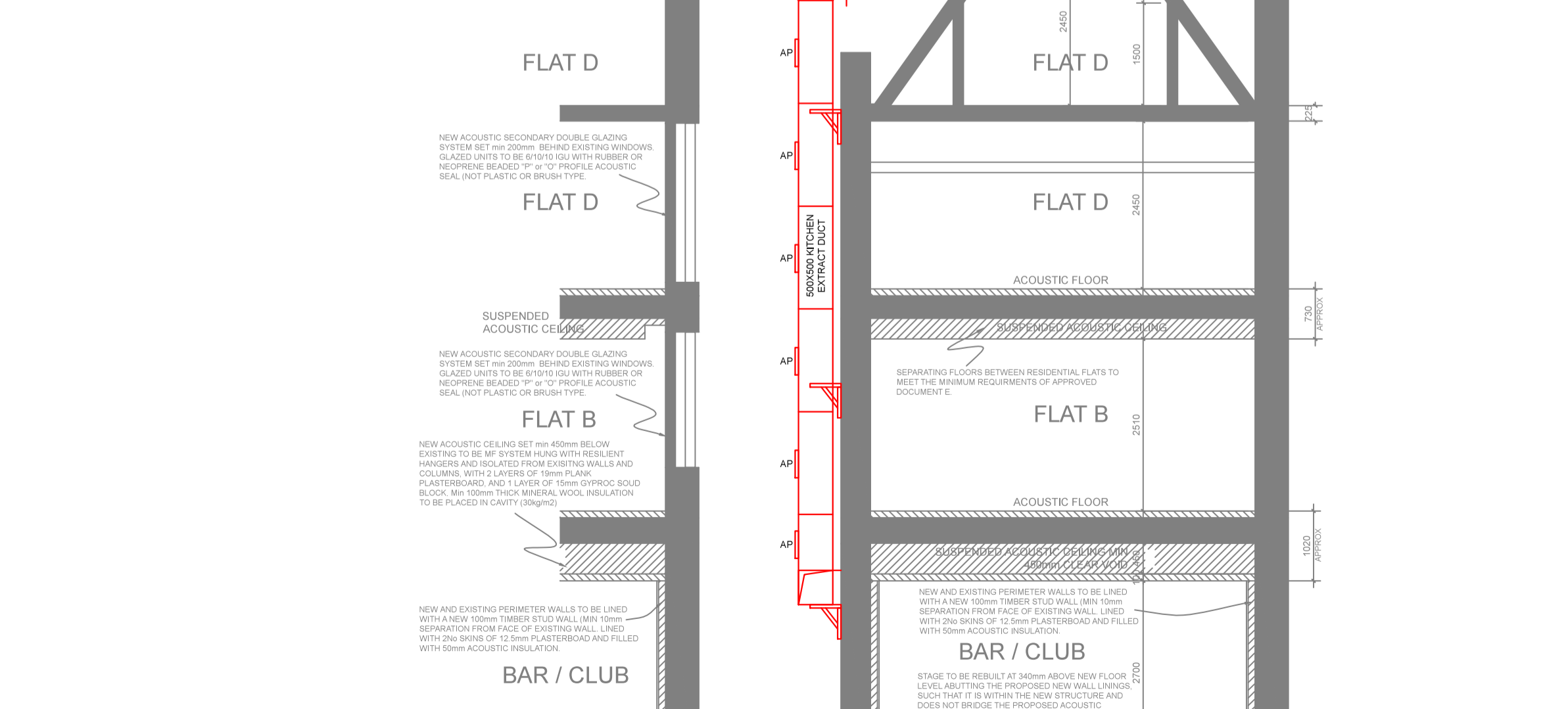
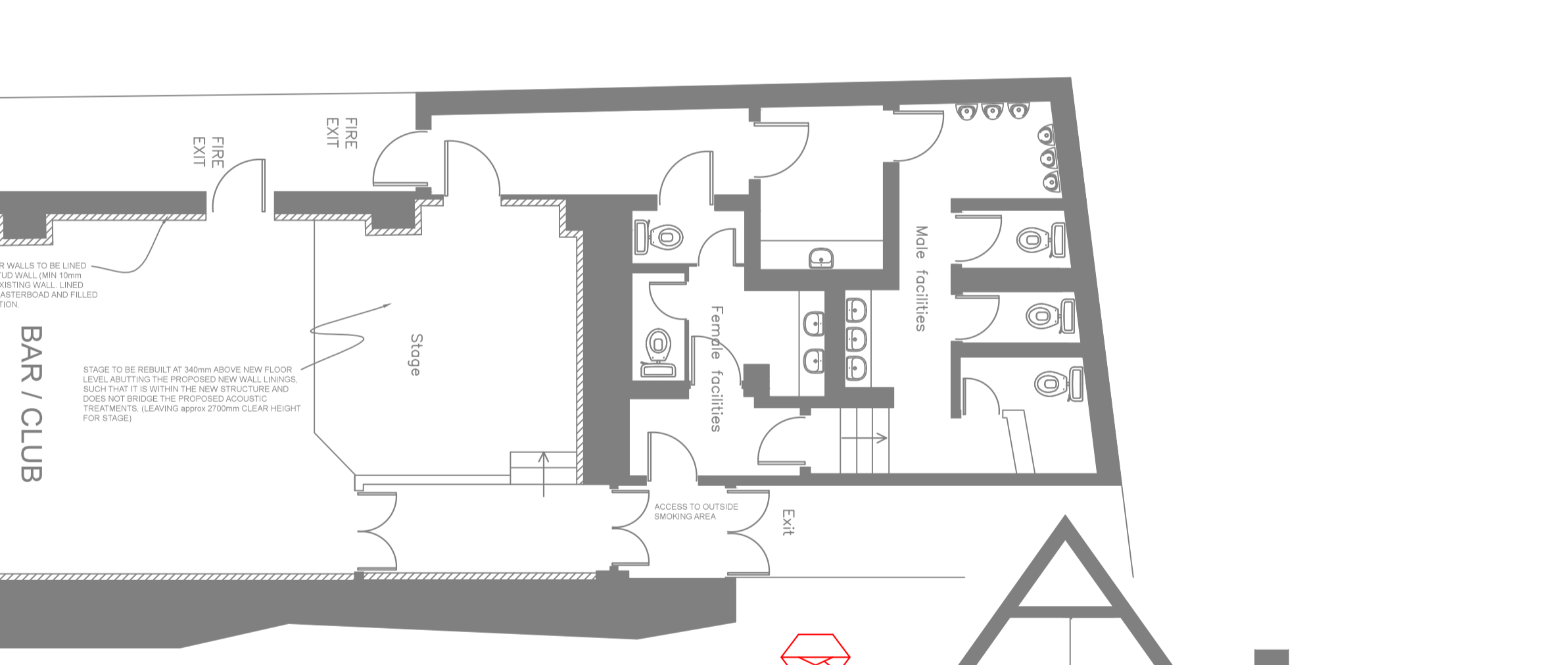
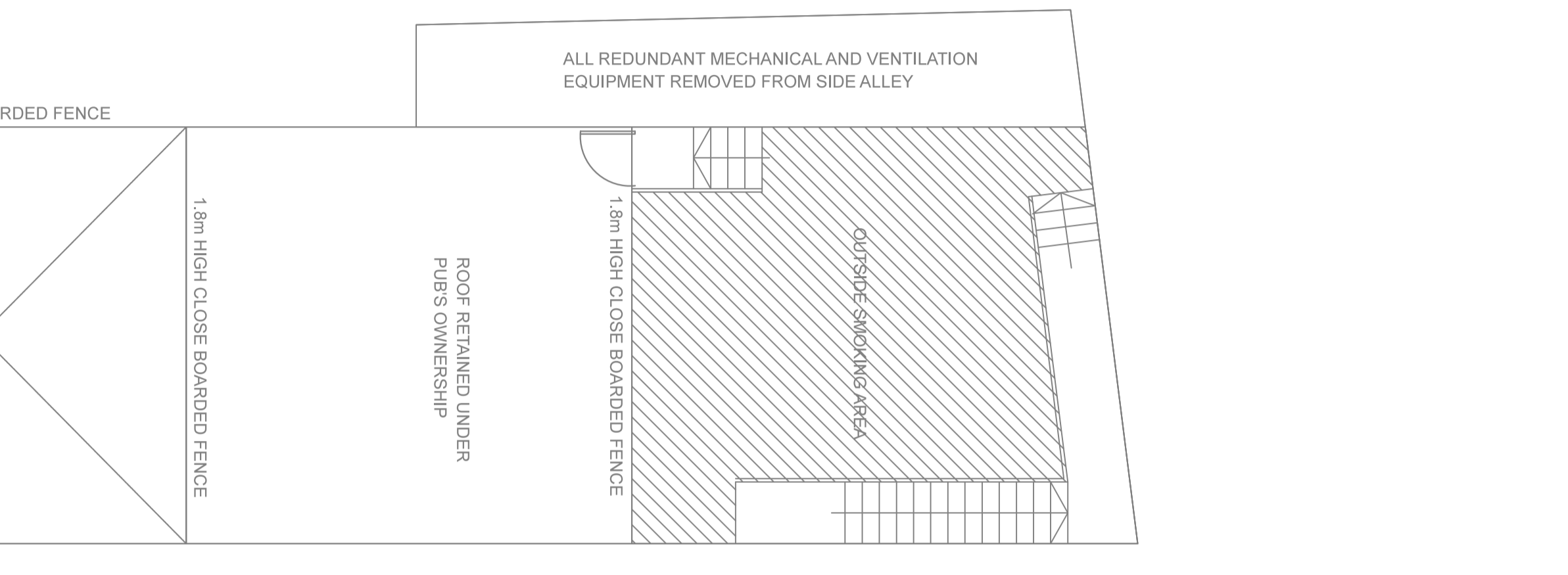
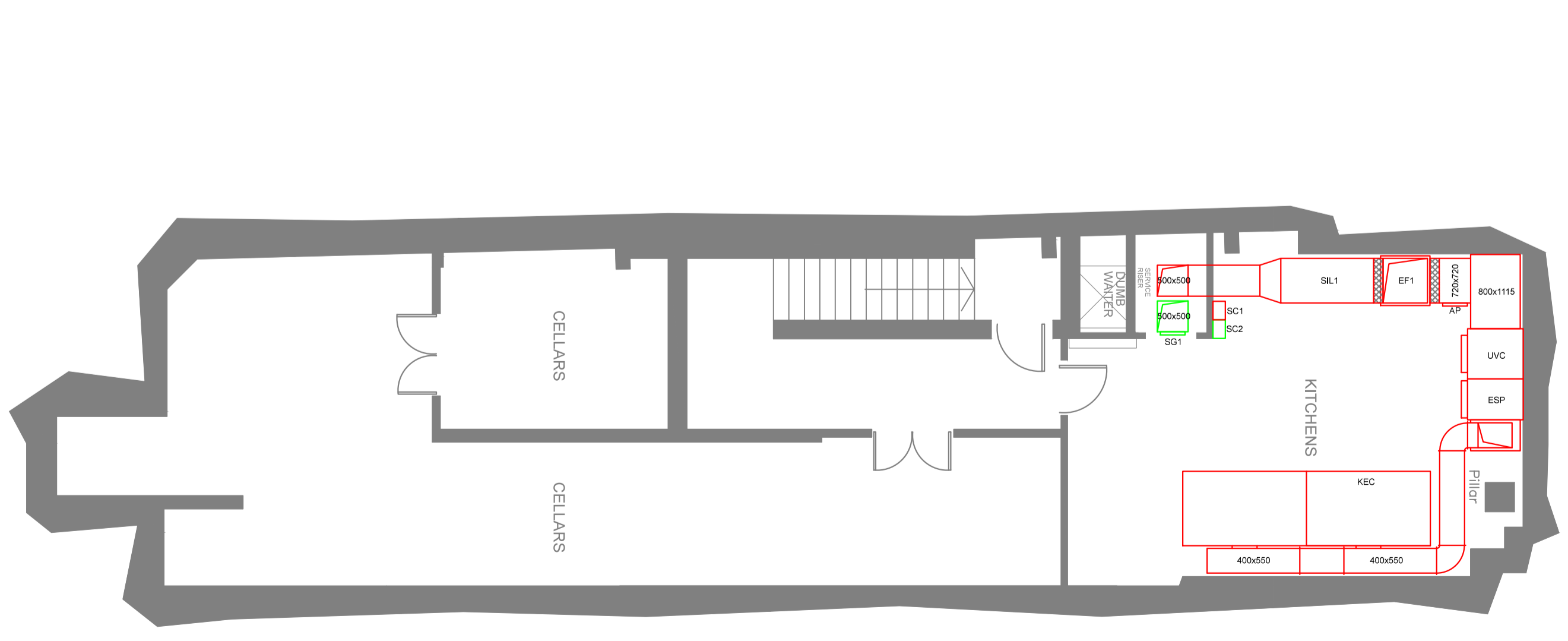
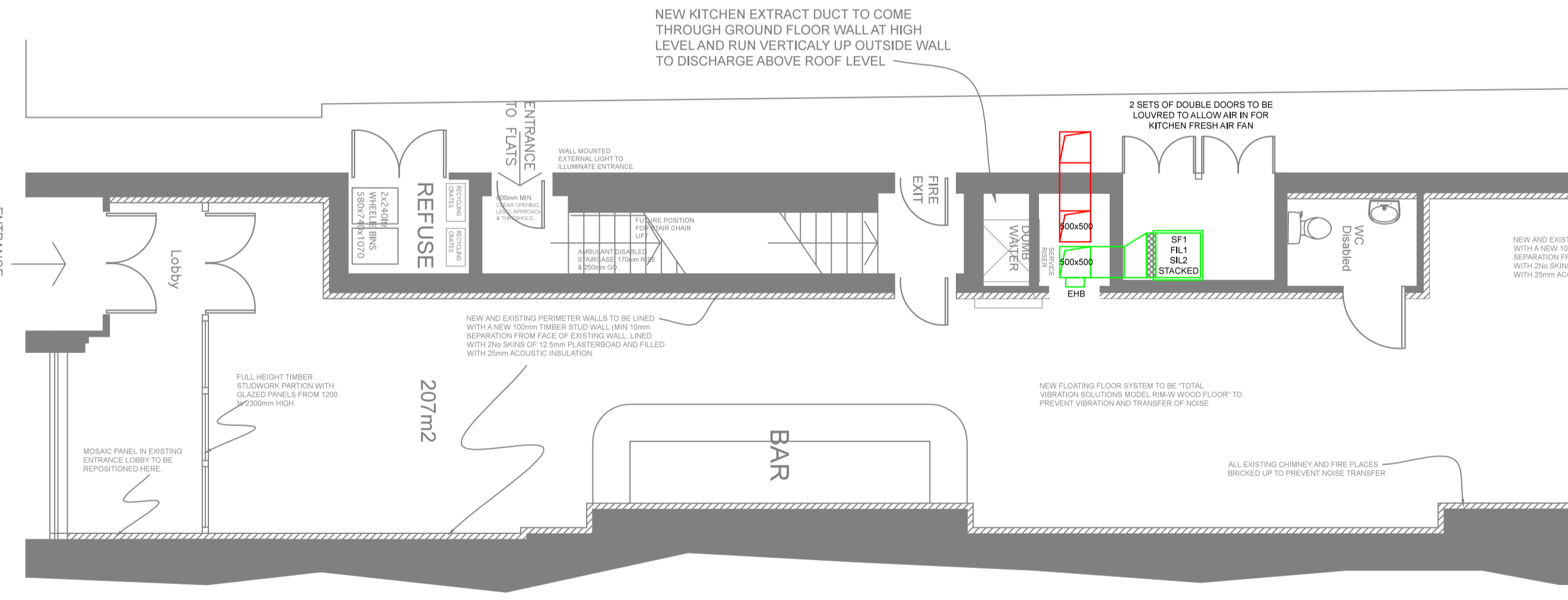
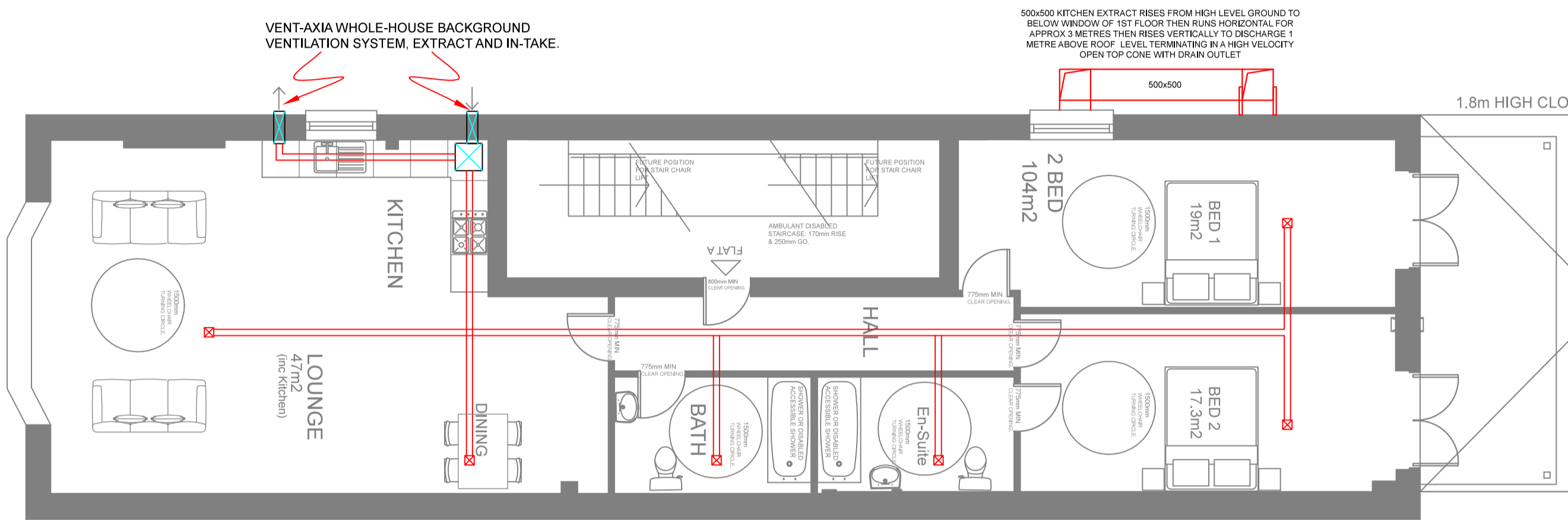
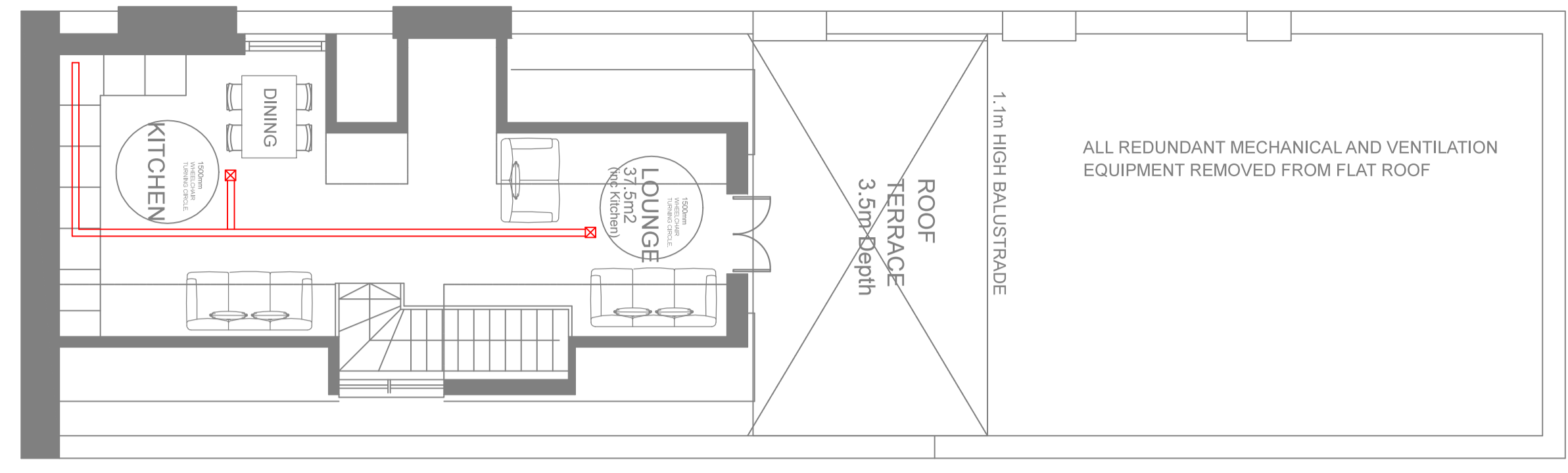
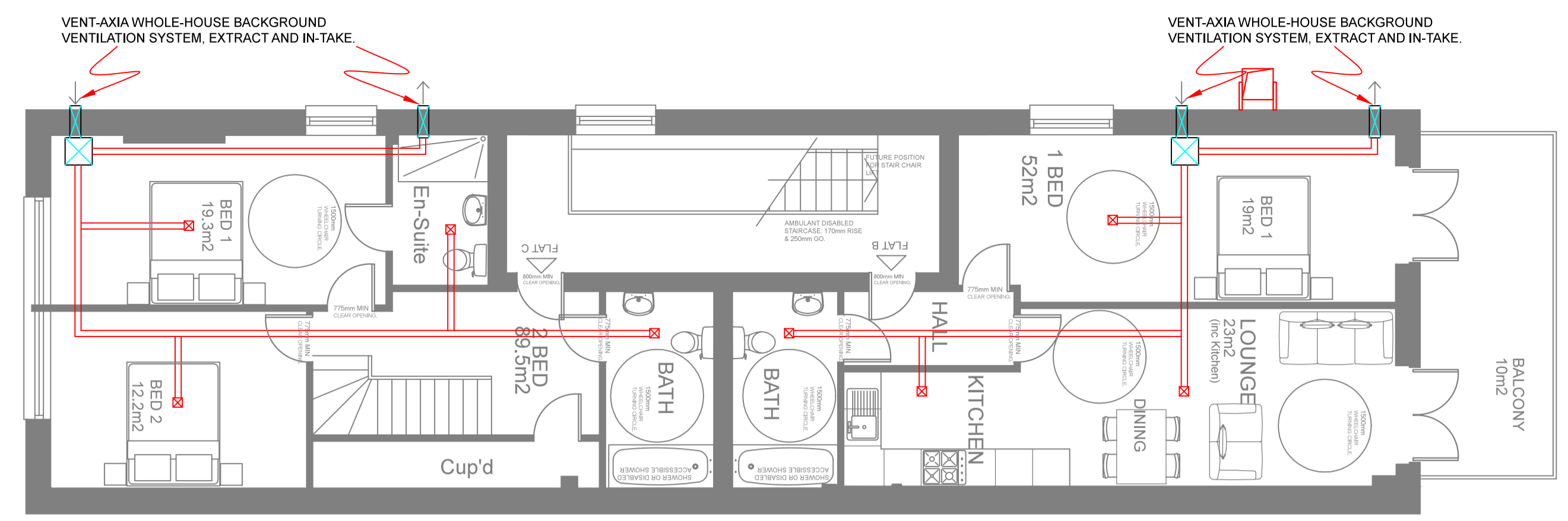


Date	Revision Details	Revision



- SC1- SYSTEMAIR FRQ5-10A SPEED CONTROLLER**
DIMS: TBC
DUCT CONNECTION: N/A
WEIGHT: TBC
ELEC SUPPLY: 415V, 3PH, 50HZ, 10AMPS
AIRFLOW: N/A
- KEC - STAINLESS STEEL KITCHEN EXTRACT CANOPY**
DIMS: 4000WIDE X 1200DEEP X 500HIGH (R) & 100HIGH (F)
DUCT CONNECTION: 2 x 400x400
WEIGHT: 168KG TBC
ELEC SUPPLY: 240V, 1PH, 50HZ, 16AMP FLC
AIRFLOW: 2.00M³/S
- ESP - PURIFIED AIR ELECTROSTATIC PRECIPITATOR**
DIMS: 900WIDE X 660DEEP X 1260HIGH
DUCT CONNECTION: 800 X 1115
WEIGHT: 200KG TBC
ELEC SUPPLY: 240V, 1PH, 50HZ, 6AMP FUSE
AIRFLOW: 2.00M³/S
- EF1 - SYSTEMAIR MUB062 630D4-A2 IE2 EXTRACT FAN**
DIMS: 800WIDE X 800DEEP X 800HIGH
DUCT CONNECTION: 720X720
WEIGHT: 114KG
ELEC SUPPLY: 415V, 3PH, 50HZ, 8.12AMP
AIRFLOW: 2.00M³/S @ 1050PA MAXIMUM
- UV-C - PURIFIED AIR 24 LAMP UV-C ODOUR CONTROL UNIT**
DIMS: 900WIDE X 810DEEP X 1260HIGH
DUCT CONNECTION: 800X1150
WEIGHT: 210KG
ELEC SUPPLY: 240V, 1PH, 50HZ, 16.6AMPS FLC
AIRFLOW: 2.00M³/S
- SIL1- ATMOSPHERE SIDE ATTENUATOR**
DIMS: 720WIDE X TBC DEEP X 720HIGH
DUCT CONNECTION: 720X720
WEIGHT: TBC
ELEC SUPPLY: N/A
AIRFLOW: 2.00M³/S
- SG1- DOUBLE DEFLECTION GRILLE**
DIMS: 450WIDE X 2050HIGH
DUCT CONNECTION: 400X2000
WEIGHT: 20KG
ELEC SUPPLY: N/A
AIRFLOW: 1.70M³/S
- SF1 - SYSTEMAIR MUB042 500D4-A2 IE2 FRESH AIR FAN**
DIMS: 670WIDE X 670DEEP X 670HIGH
DUCT CONNECTION: 580X580
WEIGHT: 65KG
ELEC SUPPLY: 415V, 3PH, 50HZ, 3.39AMP
AIRFLOW: 1.7M³/S @ 350PA MAXIMUM
- FL1 - F8 GRADE BAG FILTER UNIT (PURIFIED AIR)**
DIMS: 550WIDE X 500DEEP X 550HIGH
DUCT CONNECTION: 580X580
WEIGHT: 20KG
ELEC SUPPLY: N/A
AIRFLOW: 1.7M³/S
- SIL2- ATMOSPHERE SIDE ATTENUATOR**
DIMS: 720WIDE X TBC DEEP X 720HIGH
DUCT CONNECTION: 720X720
WEIGHT: TBC
ELEC SUPPLY: N/A
AIRFLOW: 1.7M³/S
- EHB - 40W BURST THYRISTOR ELECTRIC HEATER (NEATAFAN)**
DIMS: 300WIDE X 150 DEEP X 500HIGH
DUCT CONNECTION: 500X500
WEIGHT: TBC
ELEC SUPPLY: 415V, 3PH, 50HZ, 55AMPS FLC
AIRFLOW: 1.7M³/S
- SC2- SYSTEMAIR FRQ5-4A SPEED CONTROLLER**
DIMS: TBC
DUCT CONNECTION: N/A
WEIGHT: TBC
ELEC SUPPLY: 415V, 3PH, 50HZ, 4AMPS
AIRFLOW: N/A

Hadley Air Ltd
2 Wake Close, Guildford, Surrey. GU2 9LA
01483-235241

Clients:
Faucett Inn

Project:
The Black Cap, 171 Camden High Street, London. NW1 7JY

Drawing Title:
Basement Kitchen Ventilation Layout

Scale:
1:50@A0

Date:
13-02-14

Drawing Number:
PN168-Mo1

Revision:
-

Drawing Status:
 Preliminary Drawing:
 Approval Drawing:
 Contract Drawing:
 Record Drawing:

Drawn By:
CB

Checked By:
CB