

energiSava 380



High Performance, Modular Whole House Heat Recovery System



Unique Modular System

Delivering not only the utmost practicality in installation flexibility, the system also performs to the highest efficiency on SAP Appendix Q and achieves a low Specific Fan Power of 0.40 W/l/s.

Recovering up to 93% of heat, the energiSava 380 reduces carbon emissions whilst providing continuous, all year round good indoor air quality.

- Easy maintenance

As part of the Lifetime Range, the energiSava 380 comes complete with a 5 year warranty. It incorporates plug in/plug out G4 pollen filters for ease of maintenance. Other internal components can be serviced easily such as the fan section and electronics.

- Intelligent controls as standard



- Most flexible installation around

The energiSava 380 has been designed specifically for ease of installation in a unique modular format to fit through a standard loft hatch and provide optimum flexibility.



The energiSava 380 runs continuously on trickle, providing all year round healthy indoor air quality. No user intervention is required as the intelligent humidity tracking controls constantly monitors the average humidity level over a two minute period. This allows the system to sense any rise in humidity and increase the extract rate in direct correlation to quietly and efficiently control condensation. Even at night time it has been cleverly engineered to prevent noisy running.

For manual boost operation, a hard-wired boost switch comes as standard with the system. Alternatively, an optional remote controlled boost switch is available. The system also incorporates a frost protection facility which monitors the temperature of the heat exchange cell. When the temperature drops below 5°C the system will automatically revert to extract-only mode, which blows warmer air through the cell, preventing the formation of frost and ensuring optimum efficiency of the system.



- Additional functions

The energiSava 380 can be installed with PIR for presence detection and absence mode as optional extras.

About

Following extensive research and testing, EnviroVent have recognised and overcome the complexities of heat recovery installation to design a unique, modular, 2-in-1 system called the energiSava 380.

features & benefits

- Thermal efficiency up to 93%
- Specific Fan Power as low as 0.40 W/l/s
- Energy Saving Trust Best Practice Performance Compliant
- Suitable for up to kitchen + 7 additional wet rooms
- Compact modular format, easy to fit through standard loft hatches
- Lightweight, one-man installation
- Fan unit can be rotated for utmost practicality
- Frost protection as standard
- Switch live input as standard
- Optional summer bypass (available from Summer 2013)
- Part of the Lifetime Range complete with 5 year warranty
- Easy to remove plug in/plug out filters
- Easy removable fan section and electronics

The system incorporates two modules: The dual functioning twin fan extraction and input module; and the ultra efficient heat exchange module. The lightweight and compact format allows for a one-man installation and the system is designed for easy push-button commissioning.

It can also be rotated to enable both right and left configurations depending on the type of installation required.

- Highest performance

Suitable for properties with kitchen plus 7 wet rooms, the energiSava 380 is not only exceptionally powerful, delivering a maximum airflow of 120 l/s but is also highly efficient achieving a thermal efficiency of 93% and Specific Fan Power as low as 0.40 W/l/s.

EnviroVent Ltd
EnviroVent House
Hornbeam Business Park
Harrogate
HG2 8PA

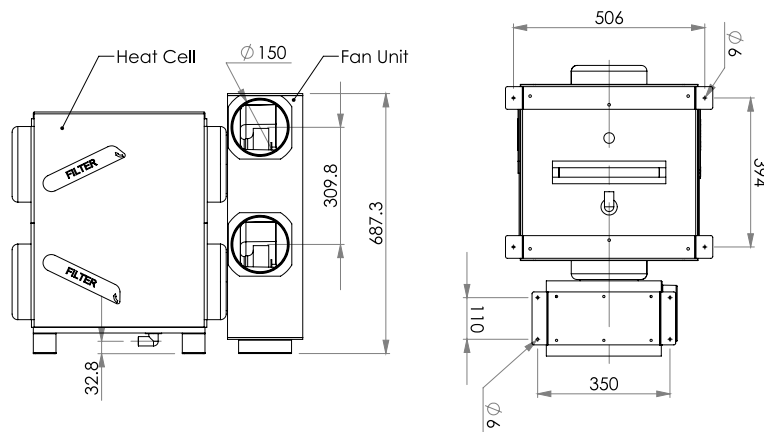
01423 810 810
info@envirovent.com
www.envirovent.com

envirovent

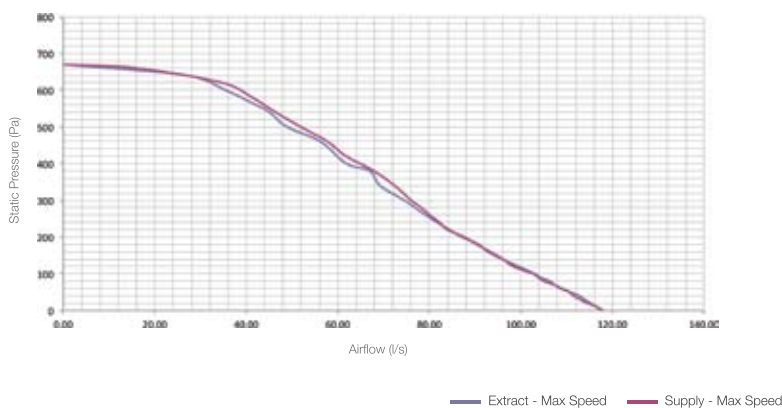
SAP Appendix Q Performance ▼

Systems with rigid ductwork only						
Exhaust Terminal Configuration - Kitchen + Additional Wet Rooms	Fan Speed Setting	Total Supply Flow Rate (l/s)	Total Exhaust Flow Rate (l/s)	Specific Fan Power (W/l/s)	Heat Exchange Efficiency (%)	Energy Saving Trust Best Practice Performance Compliant
+ 1 additional wet room	100% Variable	15.0	15.0	0.42	93	Yes
+ 2 additional wet rooms	100% Variable	21.0	21.0	0.40	93	Yes
+ 3 additional wet rooms	100% Variable	27.0	27.0	0.44	92	Yes
+ 4 additional wet rooms	100% Variable	33.0	33.0	0.51	92	Yes
+ 5 additional wet rooms	100% Variable	39.0	39.0	0.59	91	Yes
+ 6 additional wet rooms	100% Variable	45.0	45.0	0.70	89	Yes
+ 7 additional wet rooms	100% Variable	51.0	51.0	0.82	89	Yes

Dimensions (mm) ▼



Performance Curve ▼



Technical Specifications ▼

Product

The energiSava 380 shall be a modular whole house heat recovery ventilation system with lowest maintenance requirement and unit running costs.

Application Suitability

The system shall be suitable for use in mid to large sized houses with kitchen plus up to seven wet rooms and designed primarily for new build and major renovations. The unit shall be floor mounted and installed in an accessible loft or void space. It shall be a single person installation with easy commissioning features. The unit shall incorporate Ø150 extract and supply spigots.

Performance

Configuration Kitchen + Additional Wet Rooms	Total Supply Flow Rate (l/s)	Total Exhaust Flow Rate (l/s)	Heat Recovery Efficiency (%)	Specific Fan Power (W/l/s)
+1	15.0	15.0	93	0.42
+2	21.0	21.0	93	0.40
+3	27.0	27.0	92	0.44
+4	33.0	33.0	92	0.51
+5	39.0	39.0	91	0.59
+6	45.0	45.0	89	0.70
+7	51.0	51.0	89	0.82

Installation

A full installation guide shall be enclosed with all products; or sent separately in advance – if required.

Motor

The unit shall incorporate Ultra Low Watt EC motor technology to provide the lowest possible SFP and unit running costs with sealed for life ball bearings and designed to operate continuously at a pre-set 'background' rate. The two motors shall be removable for servicing.

Fan Impeller

EC motors shall power the centrifugal backward curved fan impellers for best performance.

Heat Exchange Cell

The heat exchange cell shall be a high efficiency counter flow cell capable of up to 93% efficiency.

Summer By-Pass

An optional summer by-pass shall be available on request.

Servicing / Maintenance

Supply and extract filters shall be located within the heat cell unit and exchanged annually. The unit shall incorporate a heat exchange cell for life and shall not require any maintenance within five years.

Warranty

The unit shall be covered by a five year warranty subject to the specified maintenance and servicing.

Controls

The unit shall be fitted with a hardwired boost switch, or remote control if specified, automatic humidity sensing with night time setback and switch live terminals for remote light switch boosting, commissionable to suit the application and satisfy Part F1. The unit shall have frost protection as standard. The following control options shall be available: PIR sensing automatic boost switching, hibernation mode.

Manufacturer

Unit shall be the energiSava 380 as manufactured by EnviroVent Ltd.

Accreditation

SAP Appendix Q eligible

Sound Data ▼

31.5 dB(A) @ 3M (unit breakout) at 21 l/s*

For full sound data figures, please contact EnviroVent on 01423 810 810

Order Code

ESAVA380	energiSava 380 Standard
ESAVA380W	energiSava 380 with remote controlled boost switch
ESAVA380SB	energiSava 380 (Summer By-Pass) Available Summer 2013

envirovent

For more information on this product call 0845 27 27 810