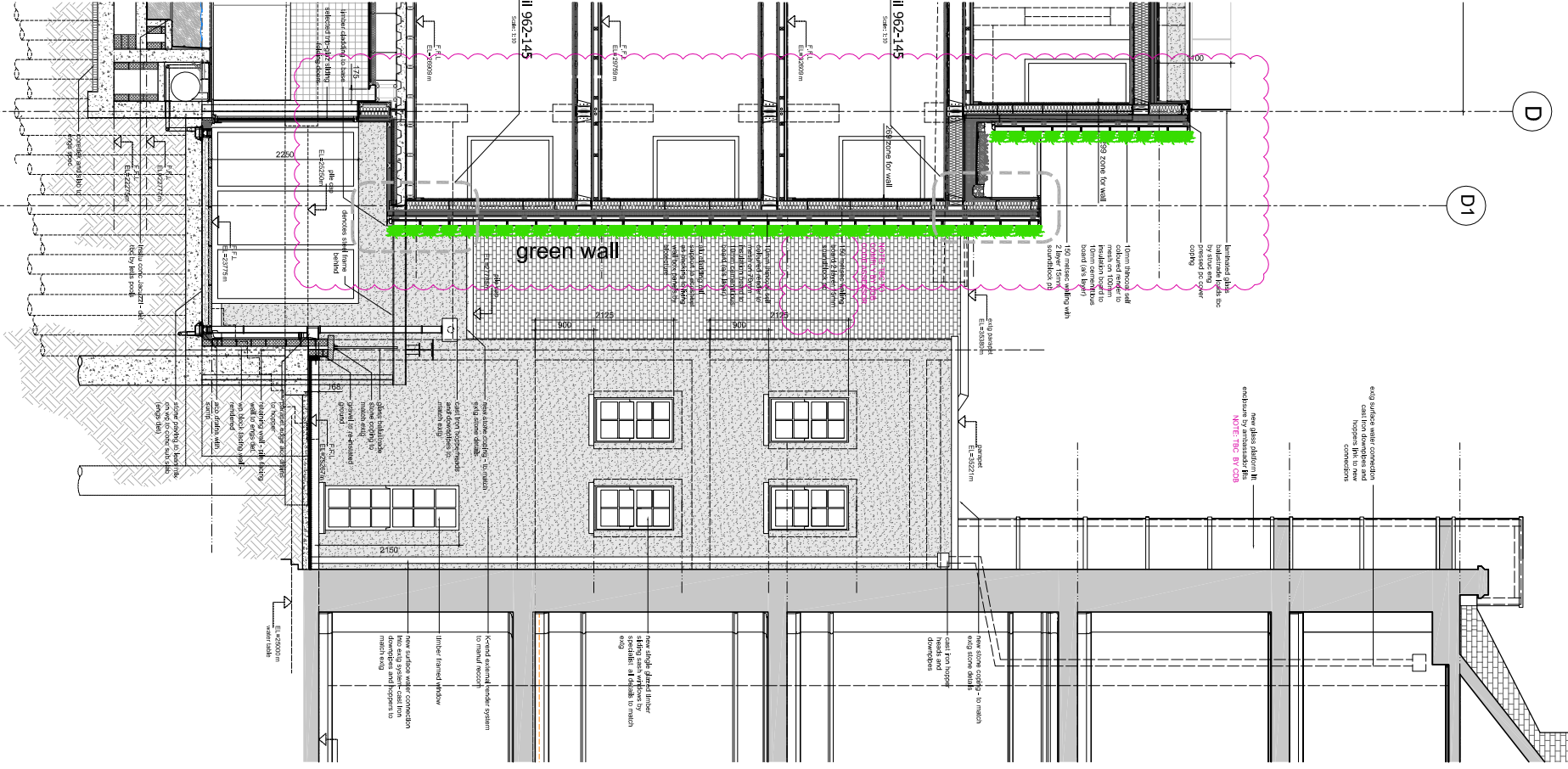
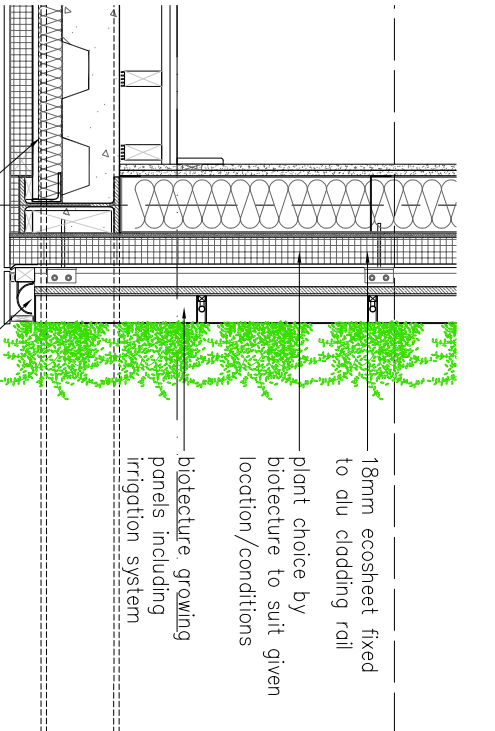
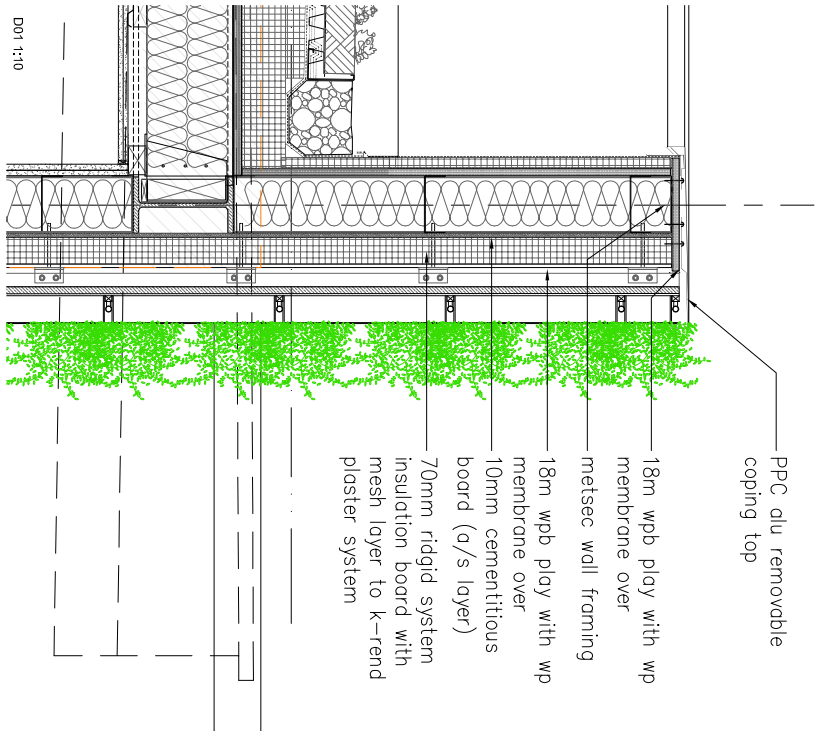


Part plan 1:50



Section BB 1:50



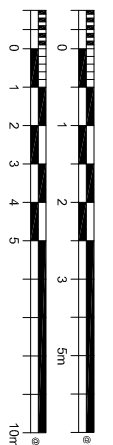
- PPC du removable coping top
- 18mm wpb play with wp membrane over metsec wall framing
- 18mm wpb play with wp membrane over 10mm cementitious board (a/s layer)
- 70mm rigid insulation board with mesh layer to k-tend plaster system
- 18mm ecosheet fixed to alu cladding rail
- plant choice by biotecture to suit location/conditions
- biotecture growing panels including irrigation system
- biotecture base gutter
- larch or s&a boarded soffit cover with phenolic insulation behind to cementitious board

Green wall

NOTES:

green wall specialist details.

Brookture Limited
www.brookture.com
+44(0)1243 572 118



DRAWING NUMBER: T-962-145B

BROOKS / MURRAY
ARCHITECTS
8-10 NEWNORTH PLACE
LONDON E2M 4LA
TEL 020 7739 9955
FAX 020 7739 9944
architects@brooksmurray.com

CLIENT:
Clarke Design and Build

JOB:
7 Fitzroy Square
& 11 Grafton Mews
London W1T 5HL

DATE: JAN 2013
SCALE: 1:50 @ A1 / 1:10 @ A3

DRAWING TITLE:
Proposed 11 Grafton Mews
Green wall details

Rev.	Amendment	Date
A	For p/b wall amendments	01/21/13
B	Final sign off	02/04/14
C		

OUR DRAWINGS ARE INTENDED FOR THE EXCLUSIVE USE OF THE CLIENT AND ARE NOT TO BE REPRODUCED OR USED IN ANY OTHER PROJECT WITHOUT THE WRITTEN PERMISSION OF BROOKS / MURRAY ARCHITECTS. THE DRAWING IS AN UNFINISHED DESIGN AND IS NOT TO BE USED FOR CONSTRUCTION WITHOUT THE WRITTEN PERMISSION OF BROOKS / MURRAY ARCHITECTS.