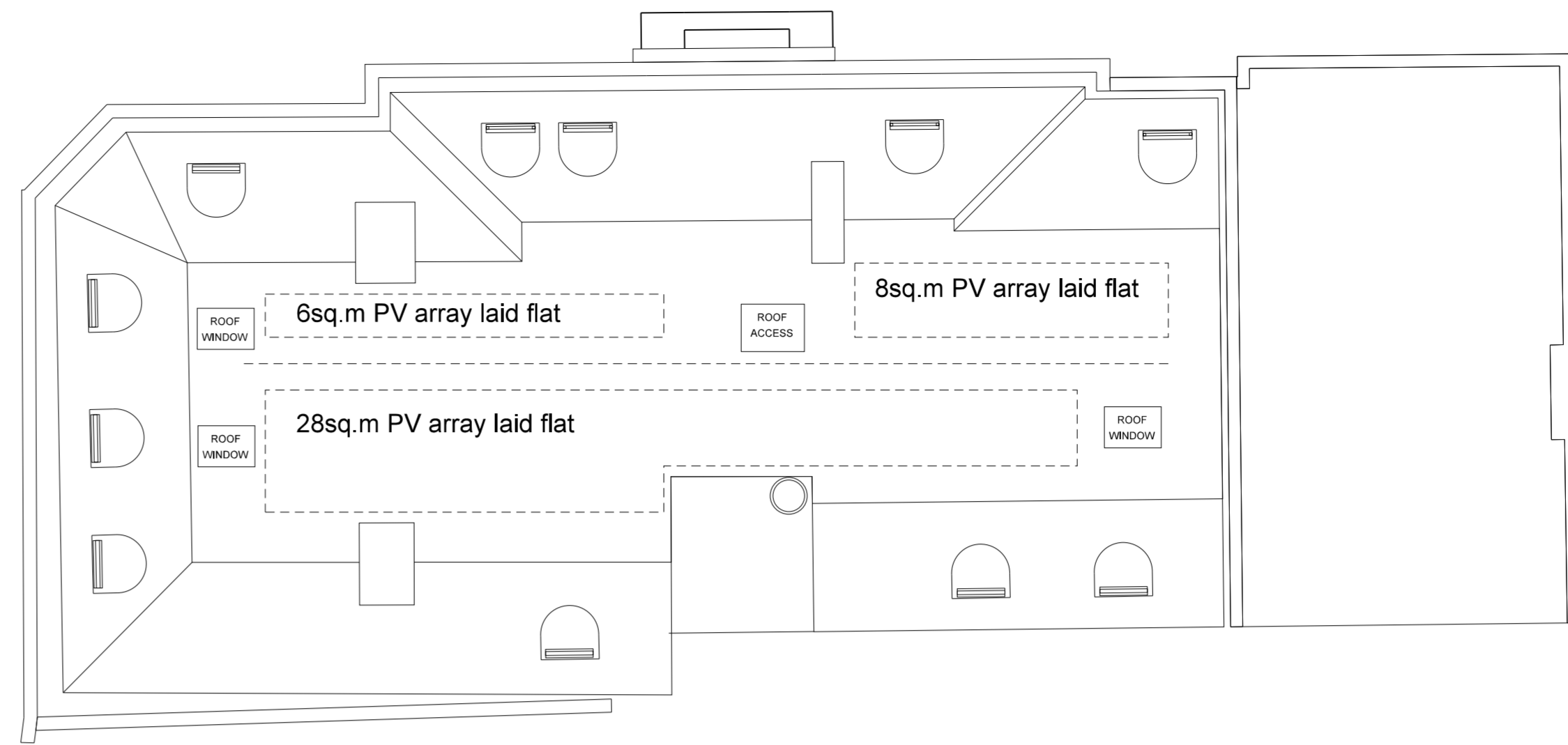
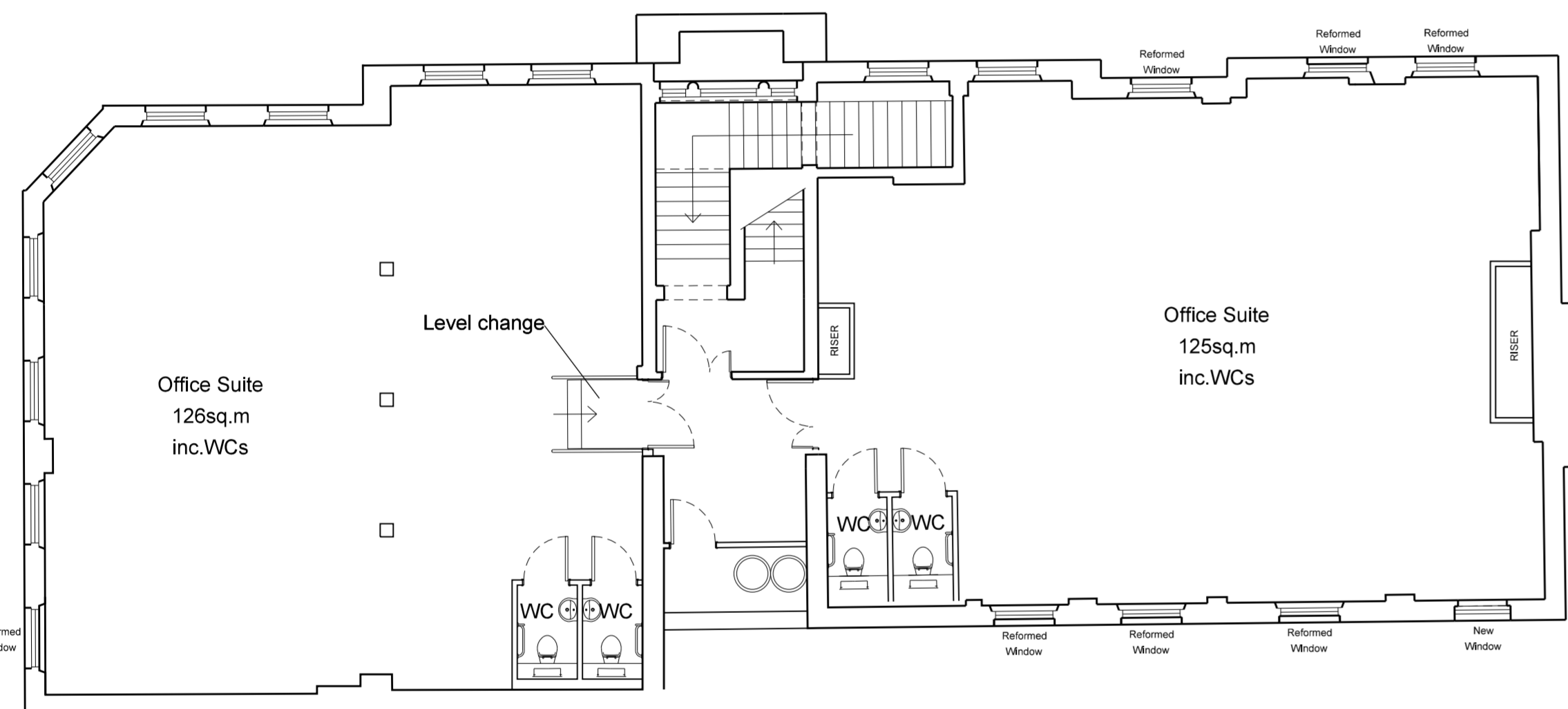


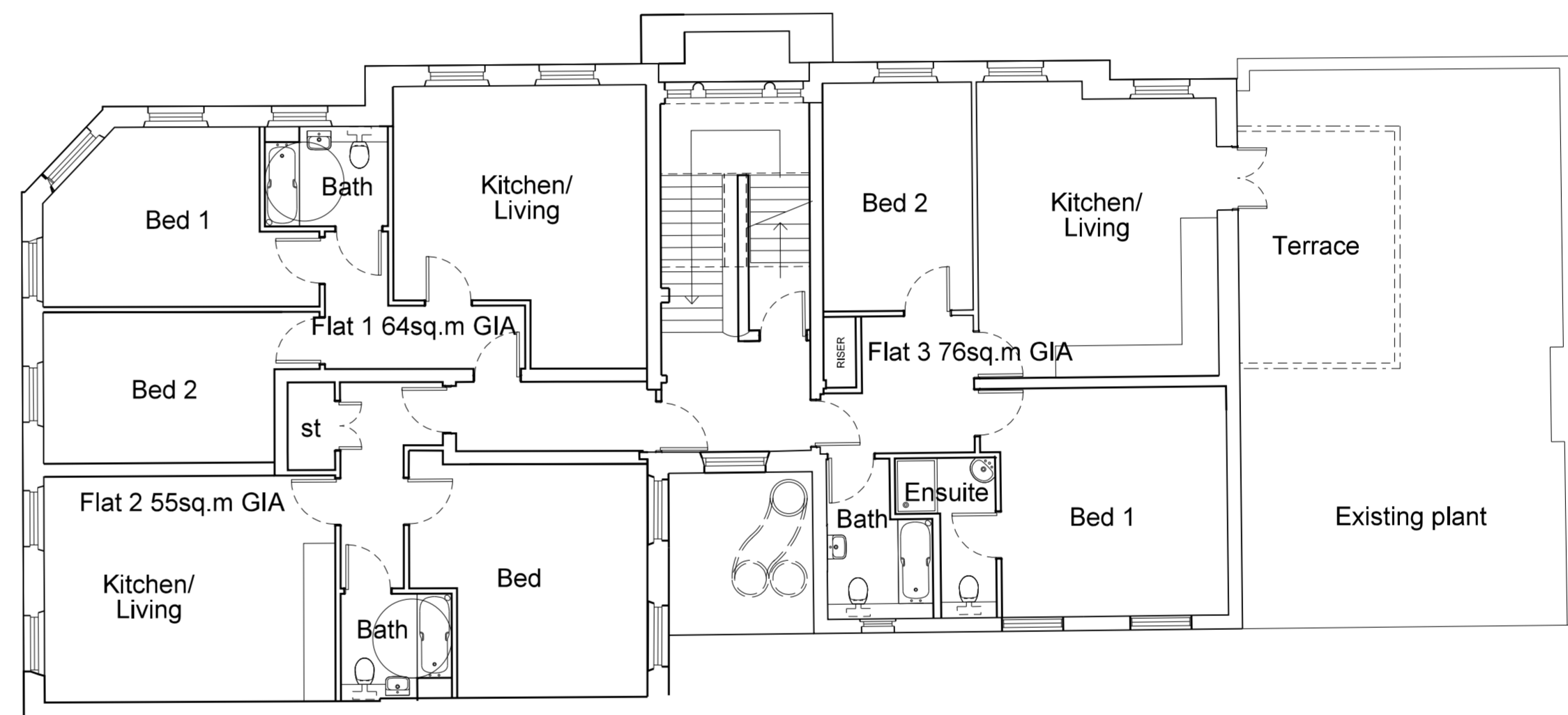
Third Floor



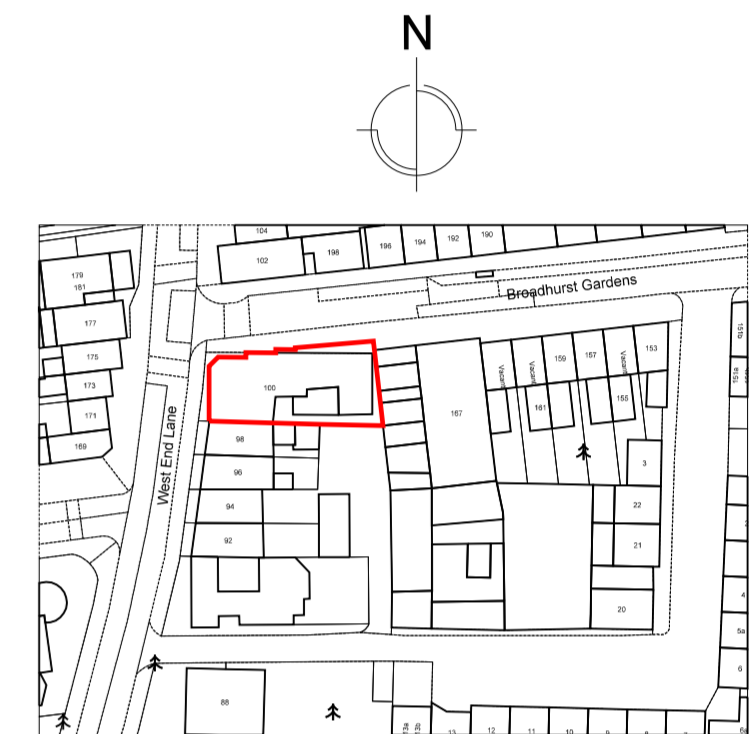
Roof



First Floor

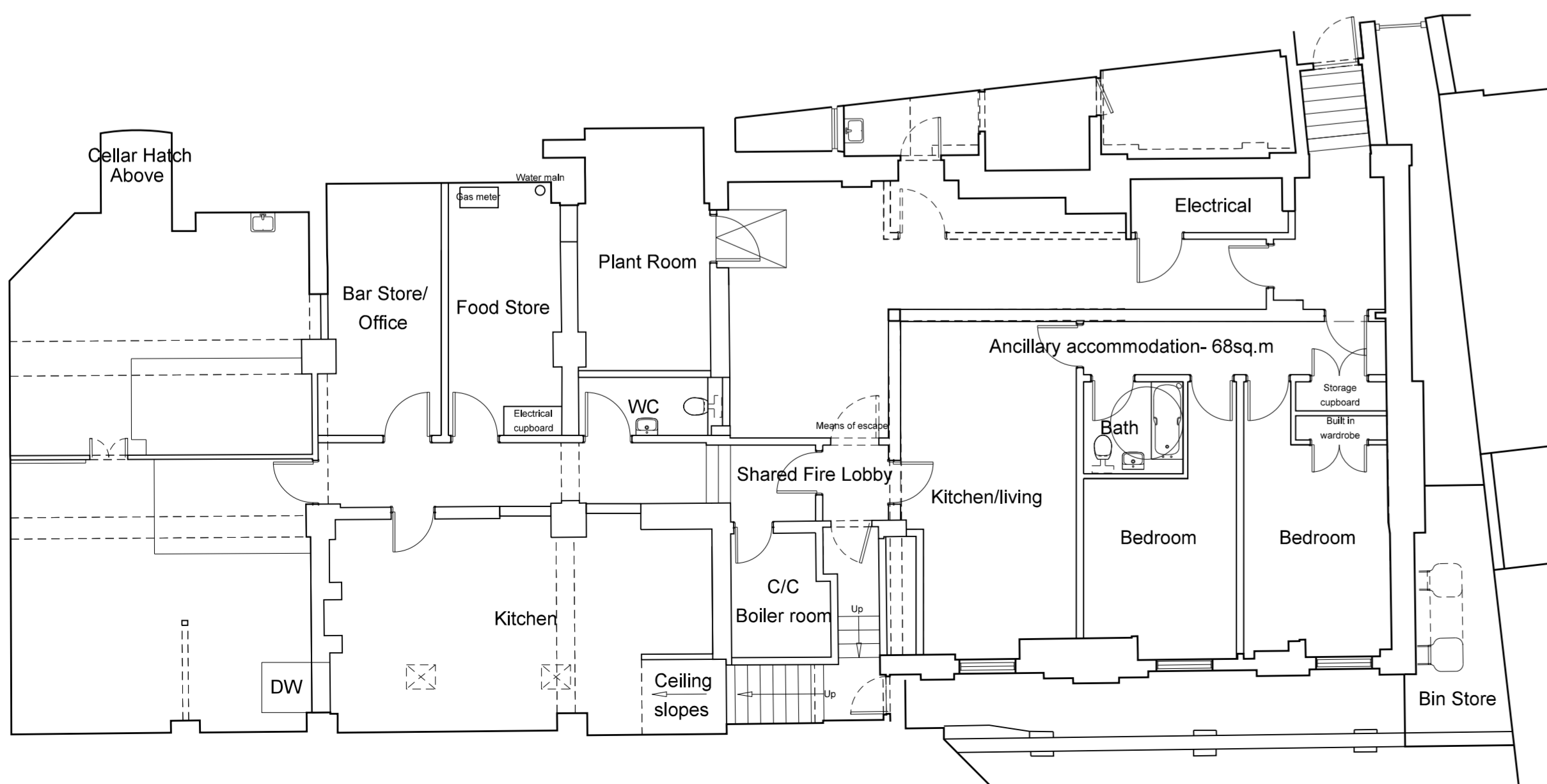


Second Floor

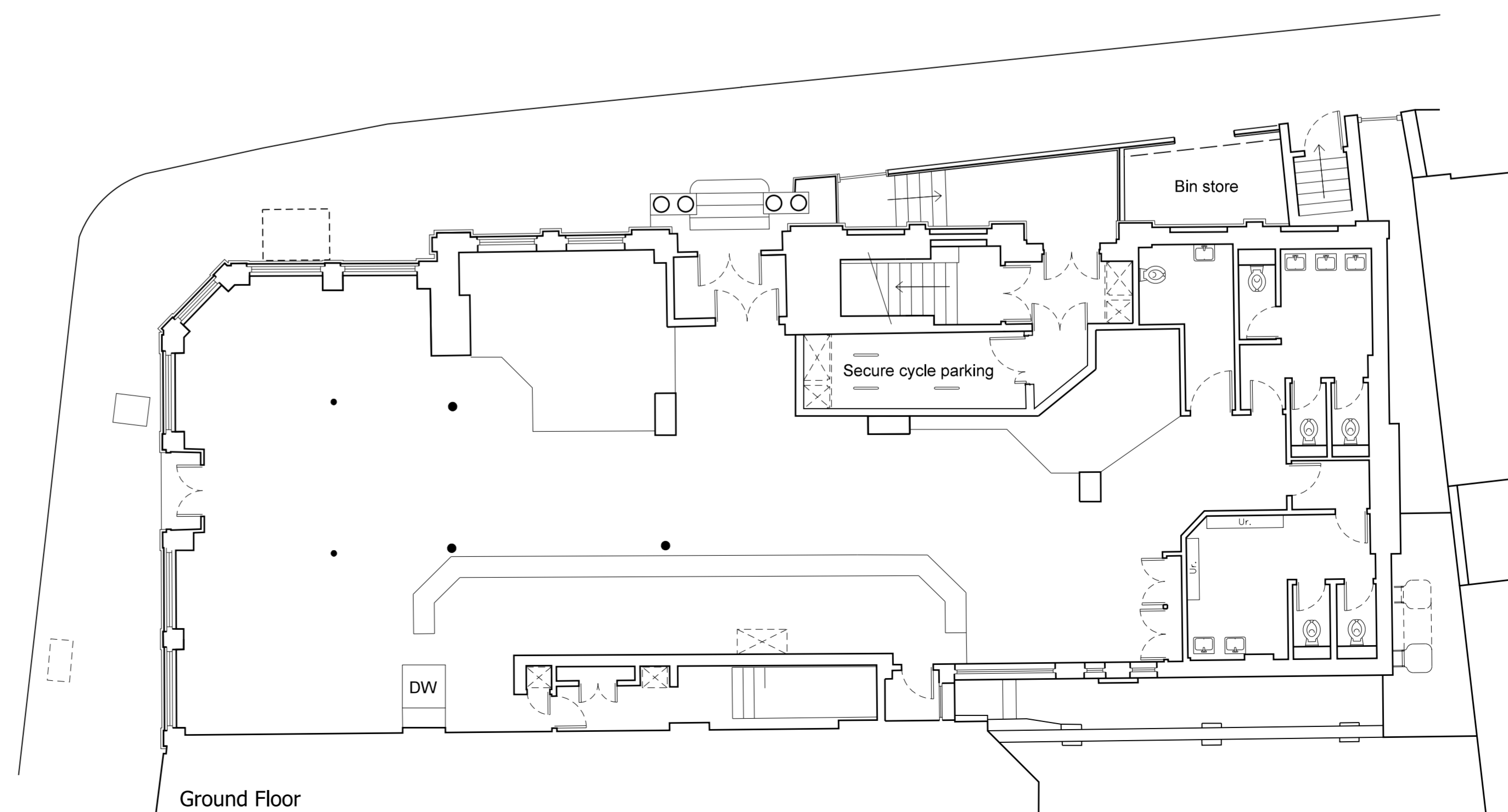


Location plan (nts)

- New 600mm diameter insulated kitchen ventilation ducts
- New 600mm x 400mm insulated kitchen ventilation ducts



Lower Ground Floor



Ground Floor

Rev	Description	Chkd	Date
F	Second floor roof terrace fence set back a further 1m from parapet wall	RP	19.03.14
E	Roof plant equipment indicated.	RC	20.11.13
D	Riser route added, Third floor windows and roof dormers amended	RC	13.11.13
C	Cycle store added on GF. Plant room enlarged in basement	RC	24.10.13
B	First floor level change amended	RC	15.10.13
A	Third floor arrangement amended. First floor chimney breasts omitted Chimney's reinstated on roof.	RC	10.10.13

Peer House
8-14 Verulam Street
London WC1X 8LZ

tel +44(0)20 7400 2120
fax +44(0)20 7831 1991

enquiries@cornisharchitects.com
www.cornisharchitects.com

cornisharchitects

Project **The Railway Tavern
100 West End Lane**

Dwg Title **Proposed Floor Plans**

Status **PLANNING**

0 5 m

Scale 1:100 @ A1 Date 20/08/2013

Dwg No 10833 / TP / 104 Rev F