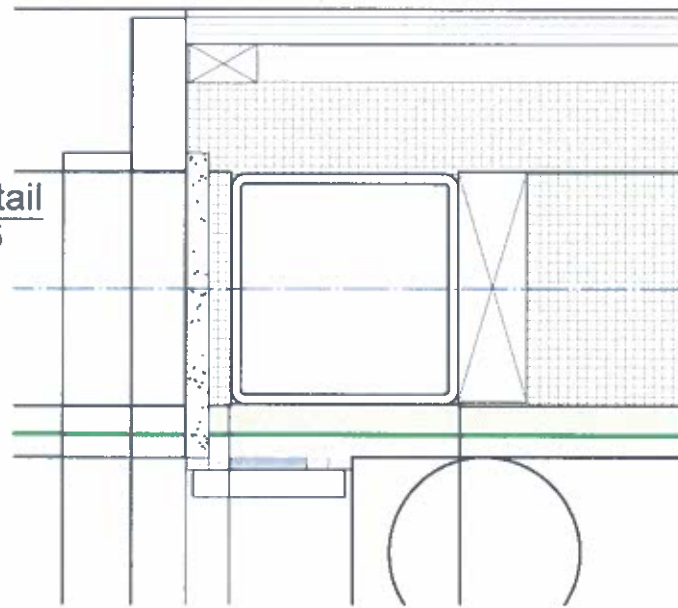
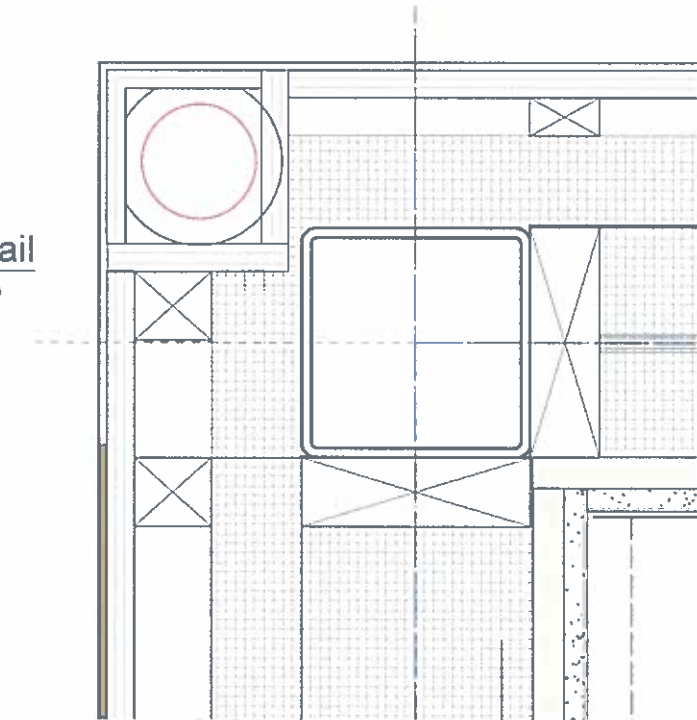


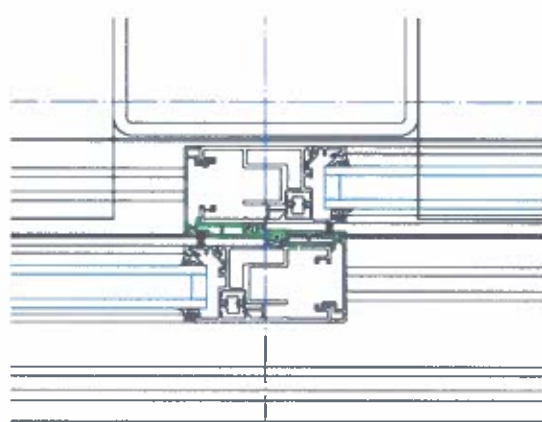
4 Plan Detail
Scale: 1:5



5 Plan detail
Scale: 1:5



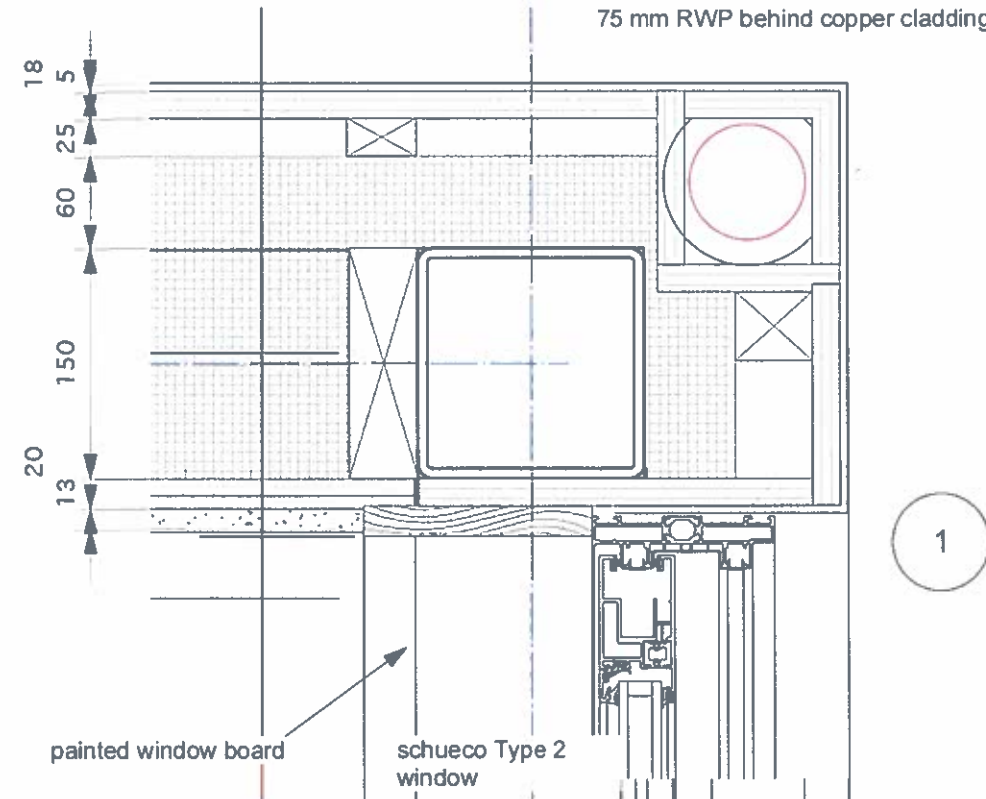
6 Plan Detail
Scale: 1:5



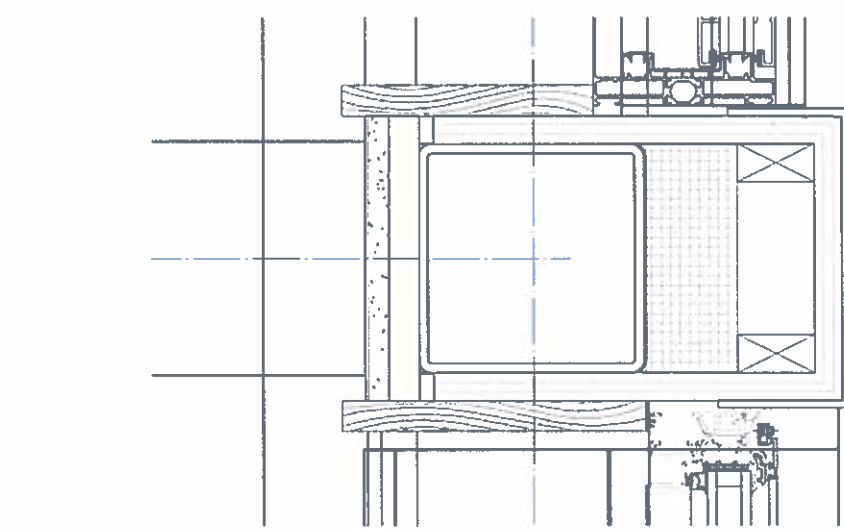
Copper cladding
18mm WBP Ply
25mm Ventilation
Breather membrane
40mm EPS Insulation

160mm Insulation

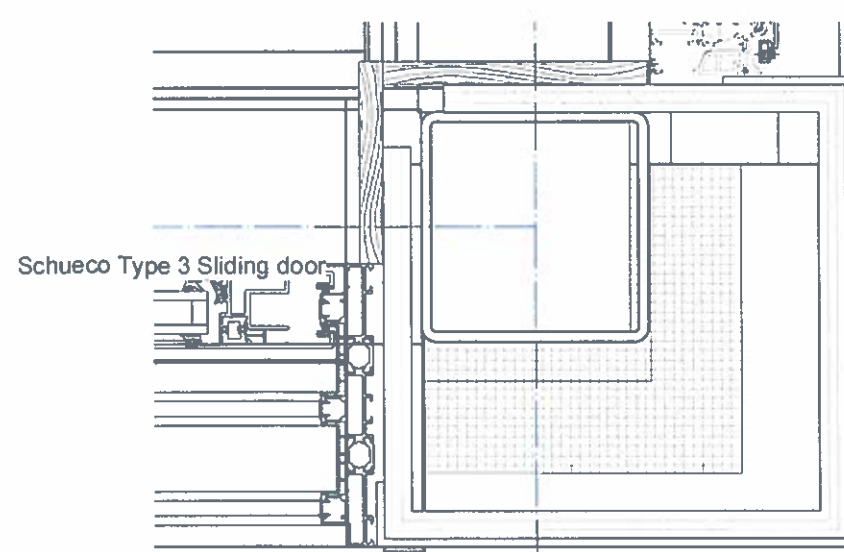
20mm Kooltherm Insulation
12.5mm Gyproc
skim coat



1 Plan detail
Scale: 1:5



2 Plan Detail
Scale: 1:5



3 Plan Detail
Scale: 1:5

Fixed Light

| No. | Date | Appr | Revision Notes |
|-----|---------|------|--------------------------|
| A | 3/1/13 | | Lifetime homes revisions |
| B | 15/5/13 | | Detail revisions |
| C | 28/1/14 | | Cladding co-ordination |

| No. | Date | Issue Notes |
|-----|------|-------------|
|-----|------|-------------|

Thomson Lavers
Architects

Design Firm Thomson Lavers Architects
75 Lansdowne Way, London, SW8 2EA
tel 020 7498 7203
thomson.lavers@btinternet.com

Consultant

Project Title
53 Eton Avenue

Sheet Title
Ground floor plan details

Project Manager
Project ID 11/080

Drawn By
Scale 1/100

Reviewed By
Sheet No
Date Date
CAD File Name BRBC
A201
of