

Sto Therm Render system
On Sto Insulation
adhered to the concrete
structure

Reinforced
concrete
structure

12.5mm Gypsum board with skim on
20mm Koolterm Insulation

16 100 150 20 12

Steel sheet u piles to
Engineer's design with lean
mix infill

25mm Cordek slip membrane

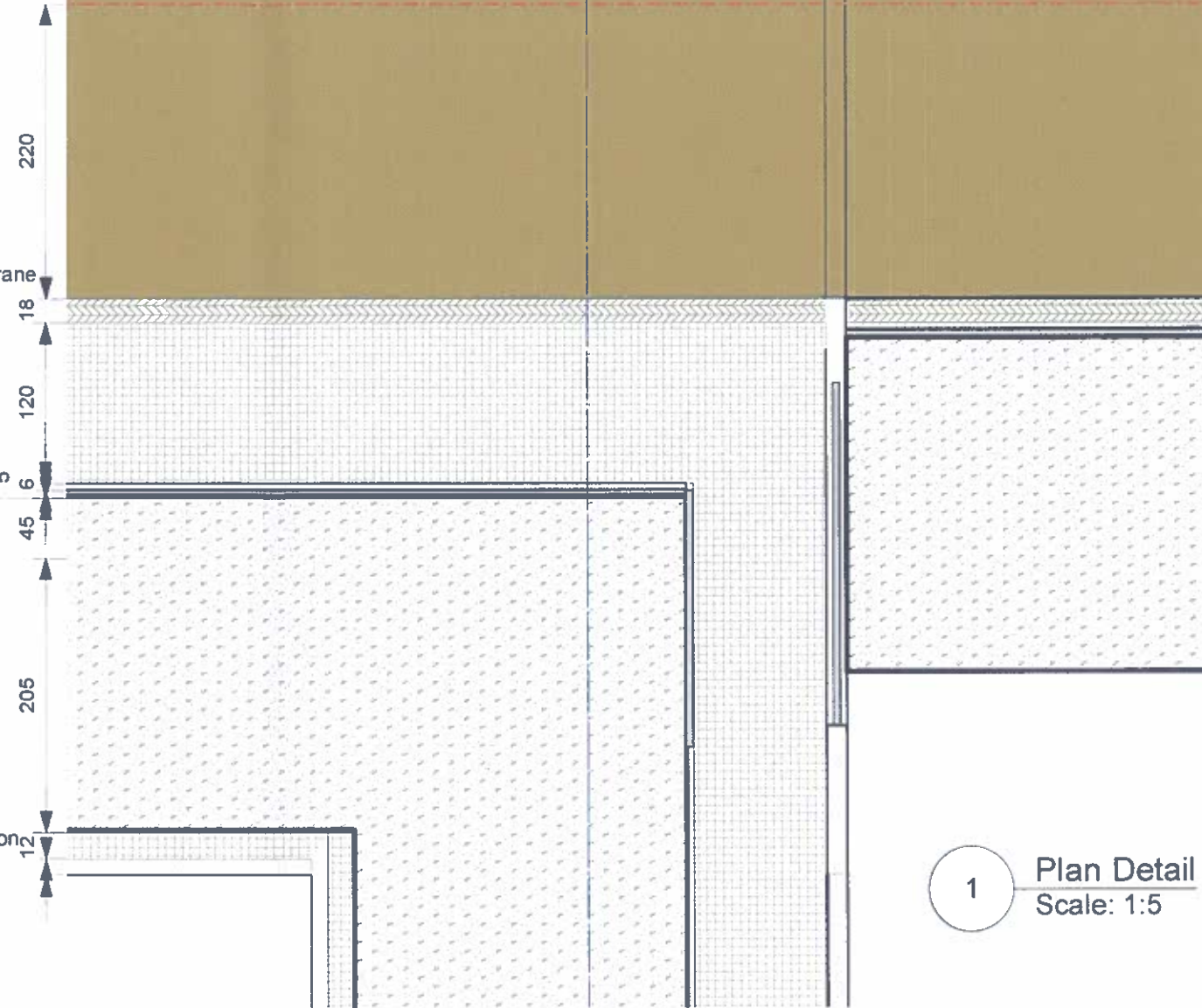
120mm EPS Insulation

Volclay Bentonite
Waterproofing
layer

RC concrete structure

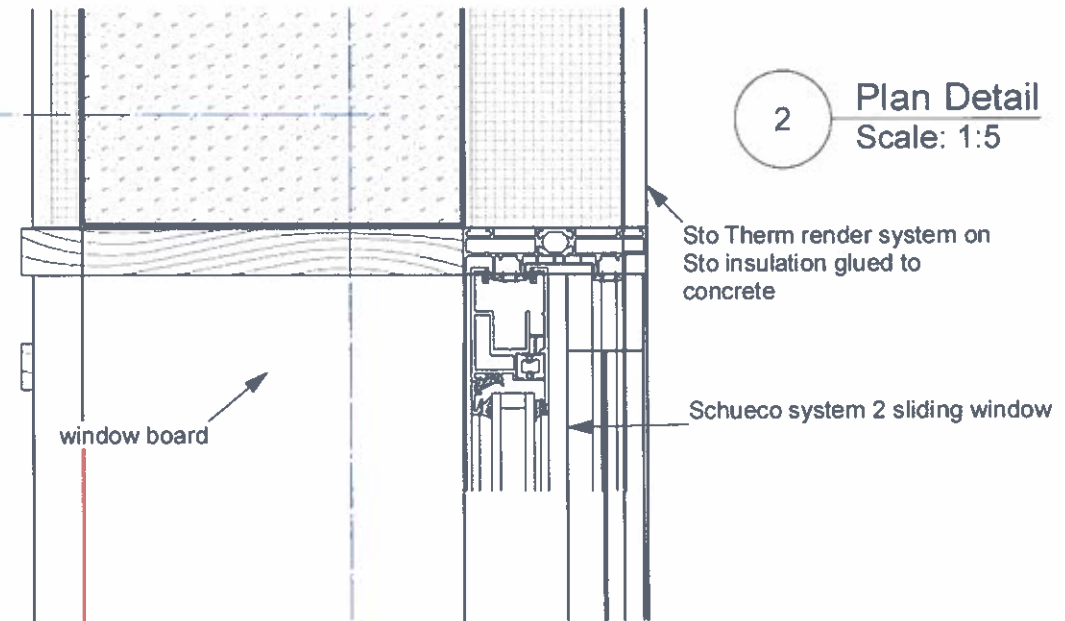
20mm Kooltherm insulation
electrics cut out of this

12.5mm plasterboard
skim coat



1 Plan Detail
Scale: 1:5

2 Plan Detail
Scale: 1:5



No.	Date	Appr	Revision Notes
A	3/1/13		Lifetime homes revisions
B	15/5/13		Detail revisions

No.	Date	Issue Notes
-----	------	-------------

Thomson Lavers
Architects 

Design Firm Thomson Lavers Architects
75 Lansdowne Way, London, SW8 2EA
tel 020 7498 7203
thomson.lavers@btinternet.com

Consultant

Project Title
53 Eton Avenue

Sheet Title
Basement plan details

Project Manager	Project ID	11/080
Drawn By	Scale	1/100
Reviewed By	Sheet No	A200
Date	Date	of
CAD File Name	BRBC	