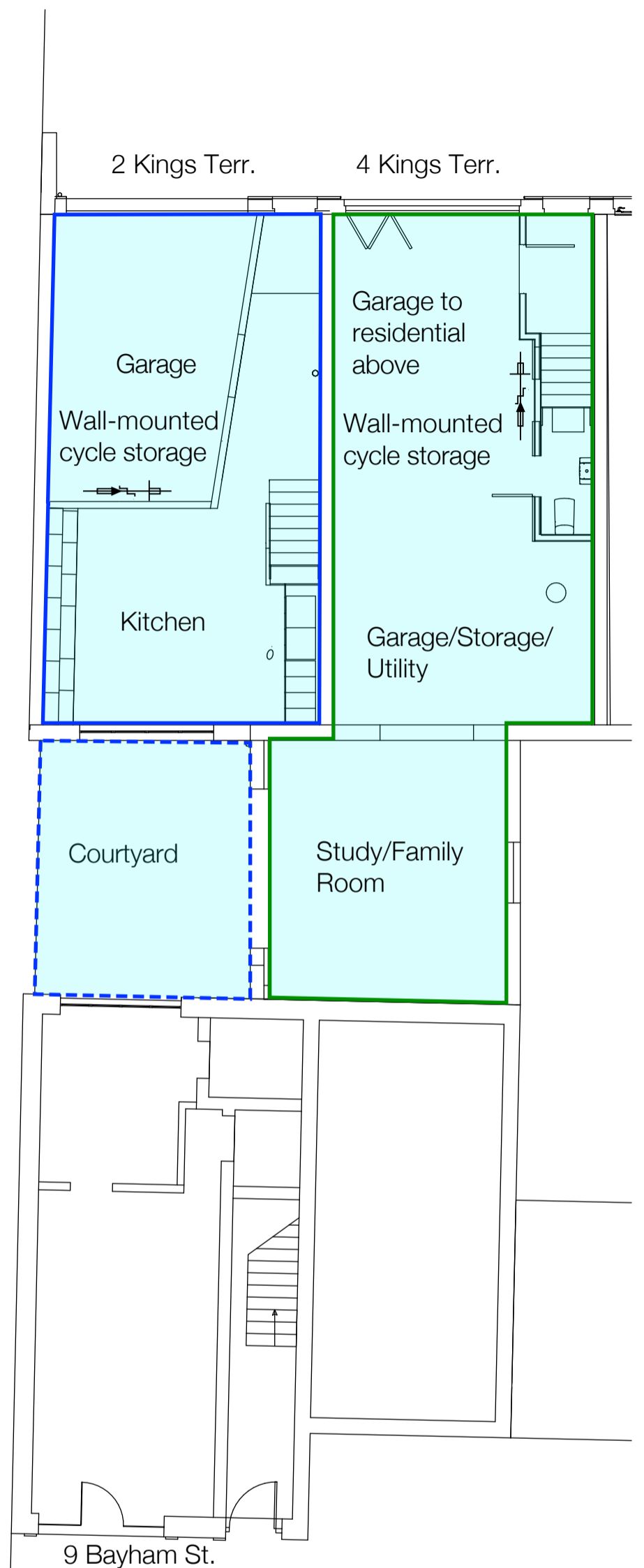


EXISTING



PROPOSED

GROUND FLOOR

Remaining B1 Use Class on the site.

9 BAYHAM ST, NW1 0JP

2-4 KINGS TERRACE, NW1 0JP

Determination from London Borough of Camden required to confirm whether prior approval is required to change the use class all B1 (a) classified space to C3 Residential.