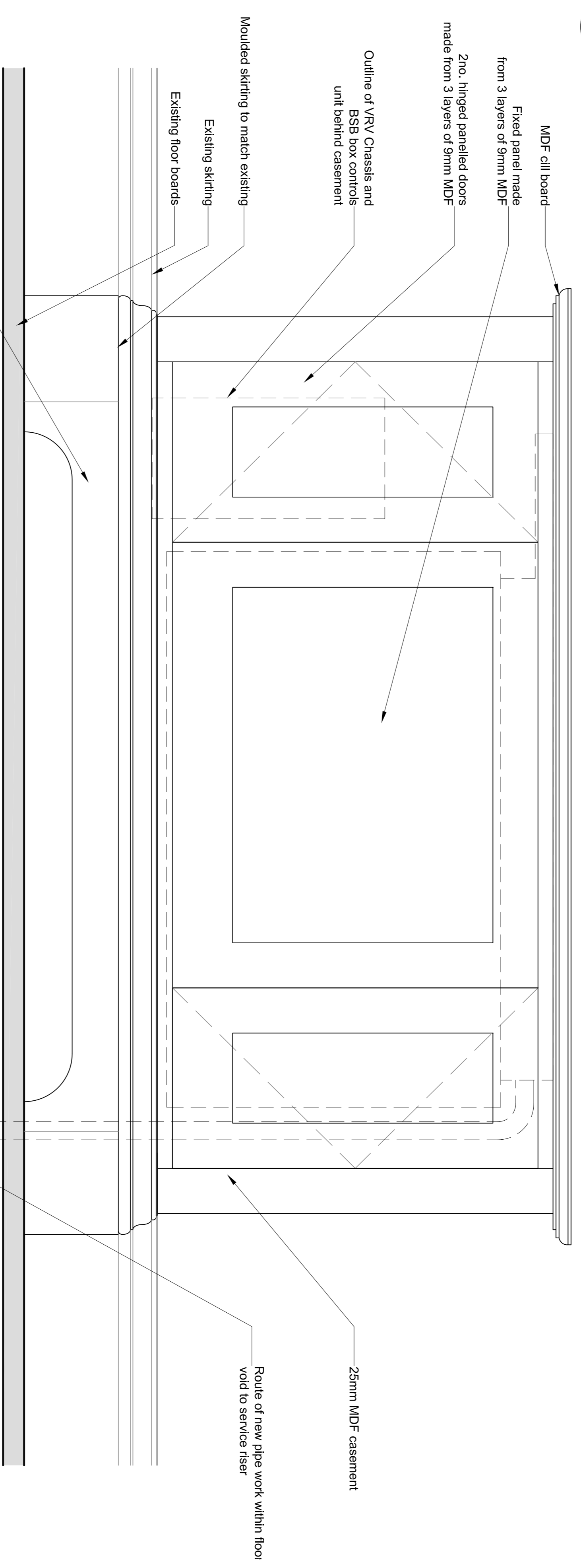
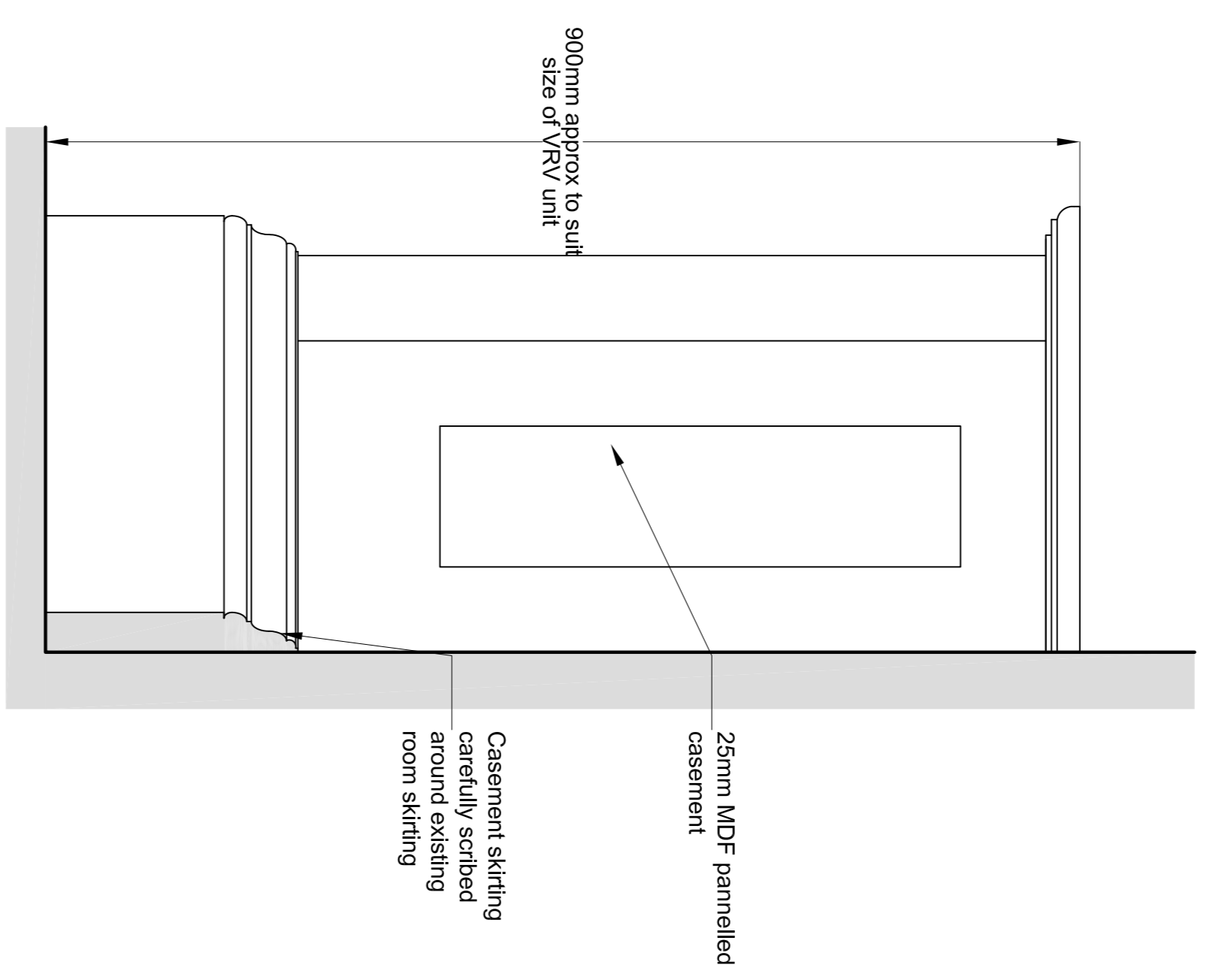


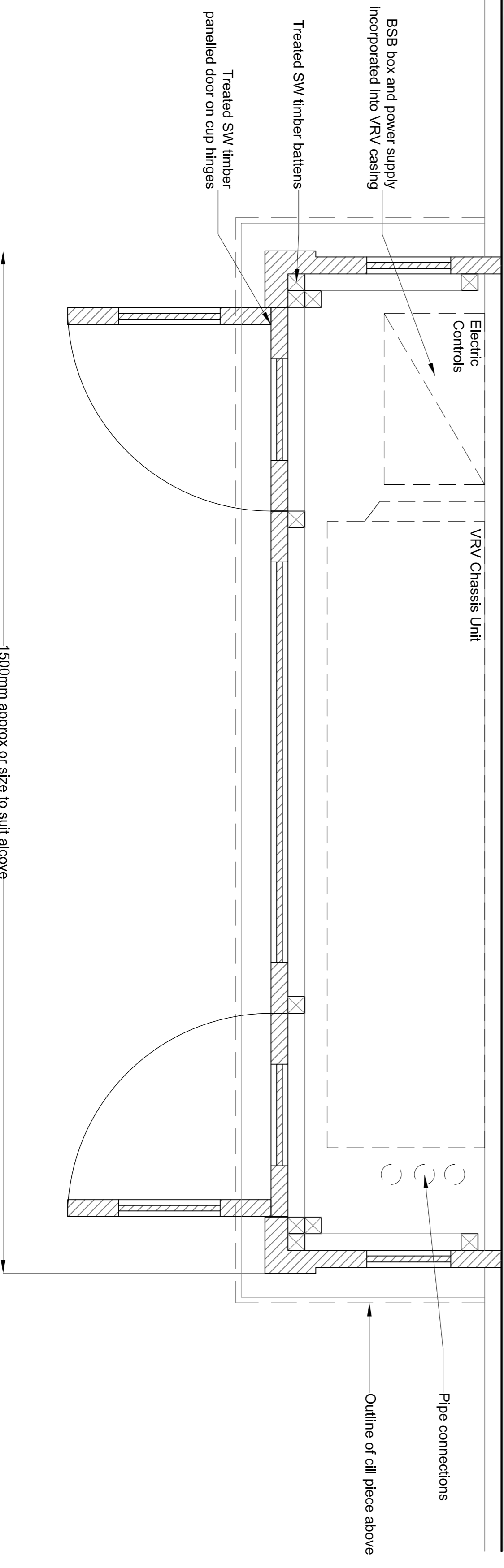
03 - TOP VIEW  
VRV Joinery Casement



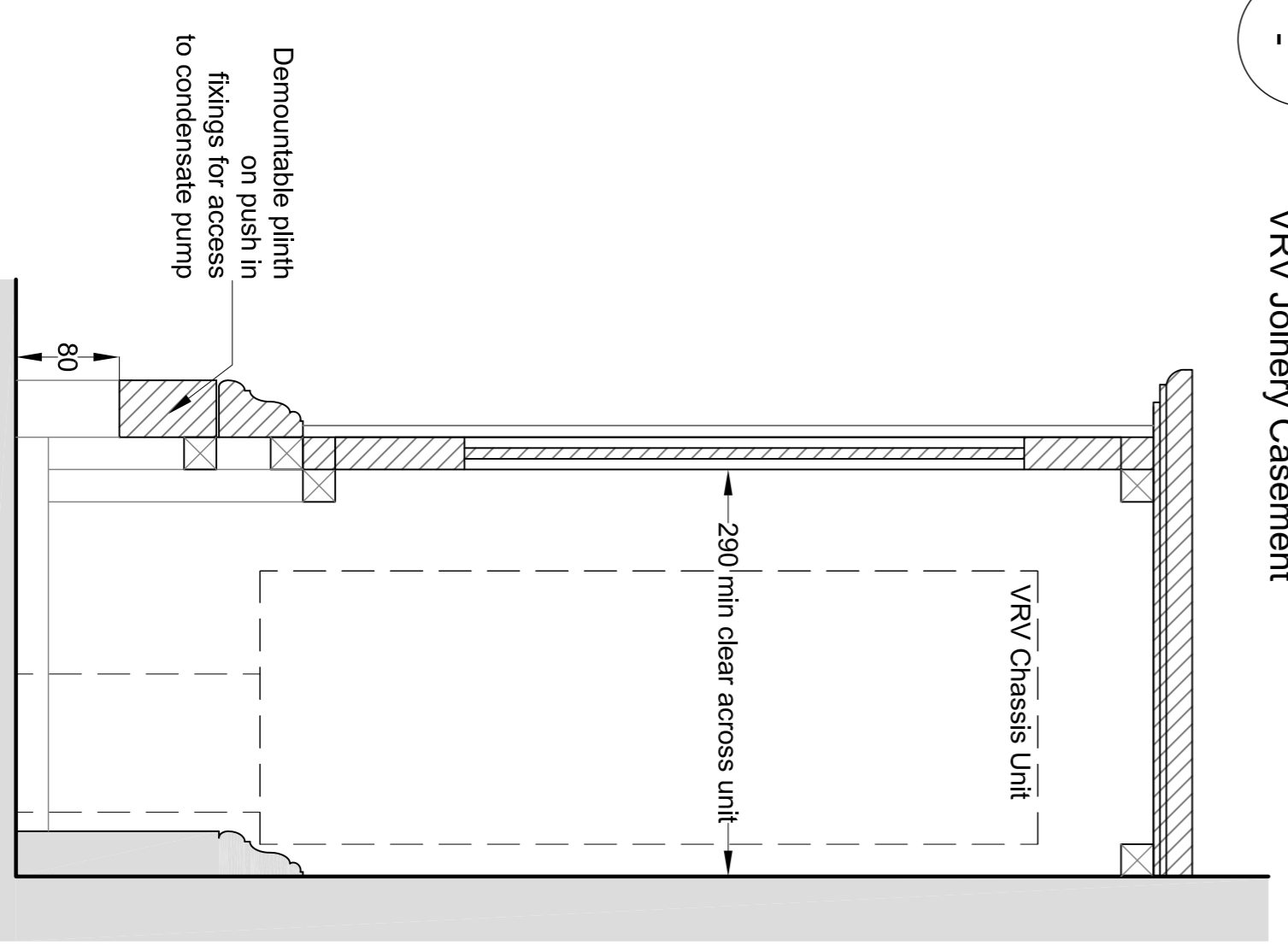
02 - FRONT ELEVATION  
VRV Joinery Casement



04 - SIDE ELEVATION  
VRV Joinery Casement



01 - PLAN  
VRV Joinery Casement



05 - SECTION  
VRV Joinery Casement

REV	ISSUE DATE	REVISION NOTES
A	14/03/2014	Issued for Planning

**GENERAL NOTES**  
Do not scale. All written dimensions must be checked on site before work commences on site or in shop. Figure dimensions take preference over written dimensions, where detailed, must be referred to the Architect immediately.  
Any panels indicated on this drawing are for guidance purposes only. No responsibility is taken for their accuracy.  
All work must be carried out in accordance with the Building Regulations and to the satisfaction of the local Authority.

**PLANNING**

**STATUS**  
GarnettPartners LLP  
Holborn Hall  
195 High Holborn  
London WC1V 7BD  
Tel: +44 (0)20 7404 7577  
Fax: +44 (0)20 7404 6648  
mail@garnetpartners.com  
www.garnetpartners.com  
architects / planners / designers



**CLIENT**  
The Bedford Estate  
**PROJECT**  
No. 18 Bedford Square  
WC1  
**DRAWING TITLE**  
VRV Joinery Casements  
as Proposed

SCALE	DATE	DATE
1:50 @ A1	14/03/14	March 14
JOB NO.	DWG NO.	REV.
792	(PL)900	A