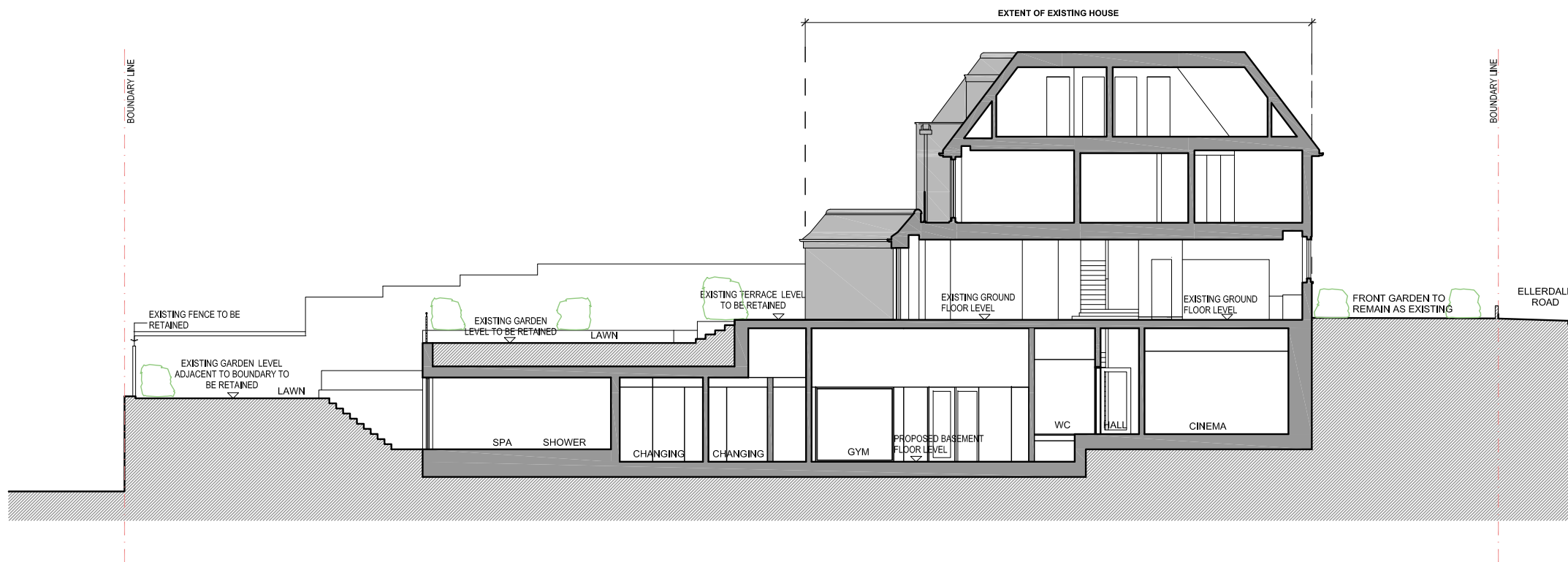
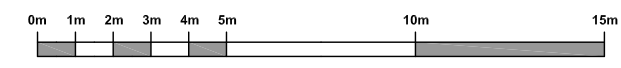


01 Existing Section A
Scale 1 : 100 @ A1



02 Proposed Section A
Scale 1 : 100 @ A1



GRAPHIC SCALE

General notes:
This drawing is copyright of KSR architects. The drawings must be read in conjunction with specifications and all other relevant documentation and drawings.
KSR Architects accept no liability for any expense, loss or damage of whatsoever nature and however arising from any variation made to this drawing or in the execution of the work to which it relates which has not been referred to them and their approval obtained. All technical compliance and statutory approvals to be obtained by a directly appointed Russian architect. Check all dimensions on site prior to carrying out any works.

Notes/Legends

PI	Issued for Planning	14.01.14	RM
P	Issued for Planning	09.09.13	RM
Rev	Notes	09/09/13	By: CRM

© KSR architects
Stamp
PLANNING APPLICATION

Key Plan
KSR architects
KSR architects
14 Greenford Street
London
NW11 2ND
t +44 (0)20 7692 5000
e +44 (0)20 7692 5050
www.ksr-architects.com

Project:
**30 Elerdale Road
London NW3 6BB**

Title:
**EXISTING SECTION A
PROPOSED SECTION A**

Date: August 2013
Drawn by: AFO
Checked: RM

Scale: 1 : 100 @A1 / 1 : 200 @A3

Project Ref: 01153
Drawing No: ELL-PL-200
Revision: P1