



L E E / F I T Z G E R A L D  
A R C H I T E C T S

199 Southwark Bridge Road  
London  
SE1 0ED

Tel. 020 7 089 6440  
Fax. 020 7 403 4421

Web site - [www.leefitzgerald.co.uk](http://www.leefitzgerald.co.uk)  
Email - [lfa@leefitzgerald.co.uk](mailto:lfa@leefitzgerald.co.uk)

2070/3.02-001/PS/mf

27<sup>th</sup> March 2014

Planning & Built Environment  
Camden Town Hall Extension  
Argyle Street  
London  
WC1H 8ND

Dear Sirs

Re: New London Theatre – proposed external lighting

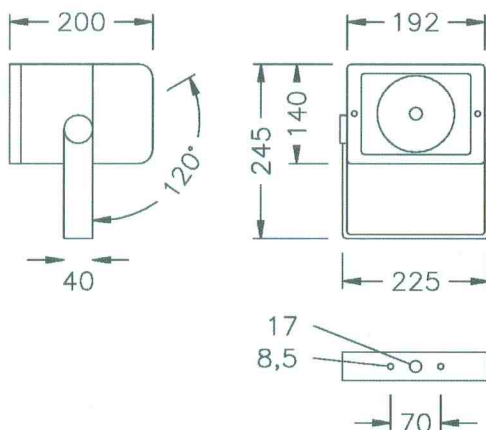
We are submitting an application to install external lighting at the New London Theatre, Drury Lane to illuminate the façade on Drury Lane and Parker Street and confirm the following:

1. Hours of operation  
Midday to 11pm.
2. Light spillage  
Barn doors will be fitted to ensure that the light only falls on the facades
3. Light levels  
20,000 lumens (250w bulbs)
4. Beam angle / fitting location  
Drawing 2070/101A shows the location for the fittings. The beam angle will be controlled by the barn doors so that the light only falls on the facades
5. Equipment design  
Please see attached data sheet. The standard data sheet does not show the barn doors.
6. Assessment of impact on adjacent roads and dwellings  
The lighting will only be directed at the facades. Light spillage will be minimised by the barn doors and the hours of operation will be restricted the hours between 12 noon and 11pm.

Please do call should you require further information.

Yours faithfully,

**Mike Fitzgerald**  
for Lee/Fitzgerald Architects



### 8 868 047 008

#### Superlight Compact 150 W, linear beam, horizontal

For ceramic metal halide lamps (HIT-CE), metal halide lamps (HIT)  
protection class I, IP65, ENEC VDE, IK08

die cast aluminium housing, polyester powder coated, rotationally symmetrical satin finish  
aluminium reflector, all exterior steel parts are stainless steel, tempered safety glass,  
silicon gasket, cable gland: 1 x PG11, through wiring possible on request, integral ballast  
and ignitor, LPF, HPF available on request, supplied without lamp

Part number	Colour	Light source	Lamp holder	Weight	Half beam angle
8 868 047 008	black	HIT-CE 150 W HIT 150 W	G12	6.0 kg	17°

