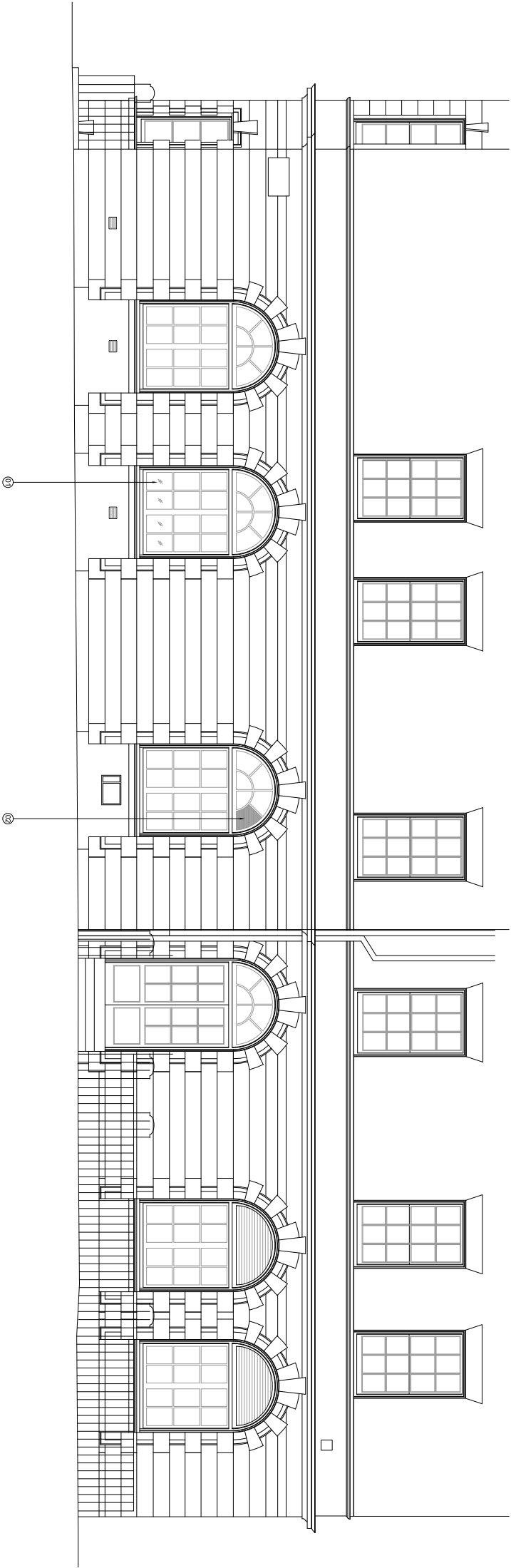


LEGEND

- 01. LOWEST ROW OF GLAZED PANES TO BE FROSTED.
- 02. NEW EXTRACT FAN INCORPORATED INTO WINDOW PANE.

NOTE

- THIS DRAWING IS DESIGN INTEND ONLY.
- CEILING LEVELS INDICATIVE ONLY. CONTRACTOR TO ALLOW FOR MODIFICATIONS TO HIGH LEVEL SERVICES TO ENSURE THAT FLOOR TO CEILING MAXIMUM HEIGHT IS ACHIEVED.
- DRAWING TO BE READ IN CONJUNCTION WITH CONSULTANT ENGINEER'S DRAWINGS.
- TO BE READ IN CONJUNCTION WITH PROPOSED FLOOR PLANS, SECTIONS AND ELEVATIONS AND SCHEDULE OF WORKS.
- NOTE



NORTH WEST ELEVATION



Status	Description	Date	Drawn By	Checked By	Status	Description
-	FOR PLANNING	06/02/2014	ML	NB		
A	FOR PLANNING	27/03/2014	ML	NB		

PaulMurphyArchitects

Copyright and ownership of this drawing is retained by Paul Murphy Architects. No part of this drawing may be reproduced or for publication to any third party without the prior written consent of Paul Murphy Architects. All rights reserved by the law of copyright and by international copyright conventions. This drawing is the property of Paul Murphy Architects and may be protected by court proceedings for damages and/or injunctions and costs. do not scale this drawing all written dimensions are in millimetres and are to be used as a guide only. any discrepancy between the drawing and the text shall be reported to the architect immediately. © paul murphy architects 2007

The Foundry
7 Gleanthorne Mews
London W6 0LJ
T 020 8846 2520
F 020 8846 2521
info@paulmurphyarchitects.co.uk
www.paulmurphyarchitects.co.uk

client: UNIVERSITY COLLEGE LONDON
project: 25 GORDON STREET-UCU REFURBISHMENT
drawing: PROPOSED NORTH WEST ELEVATION
stage: D
no: 1208 PL(2-1)3
scale: 1:100 @ A3
rev: A