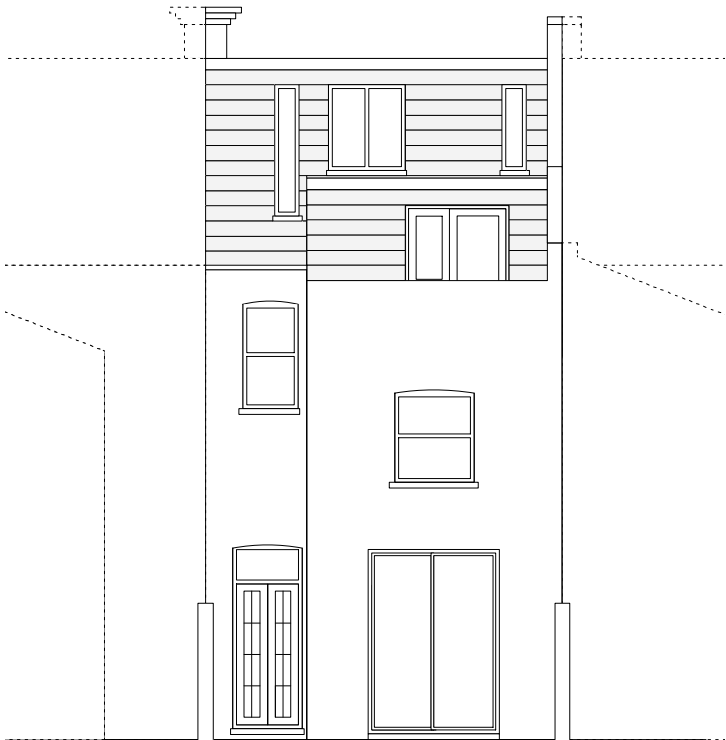




East Elevation



North Elevation



West Elevation

revisions		
Rev. A - Windows/ Doors amended		27.03.14

notes

all information contained in this drawing is sole copyright of hugh strange architects

project		71 Sumatra Road				
drawing		As Built Elevations				
job. no.	20	dwg. no.	03	rev.	A	scale 1:100
issued for		Information				
		date 25.03.14				