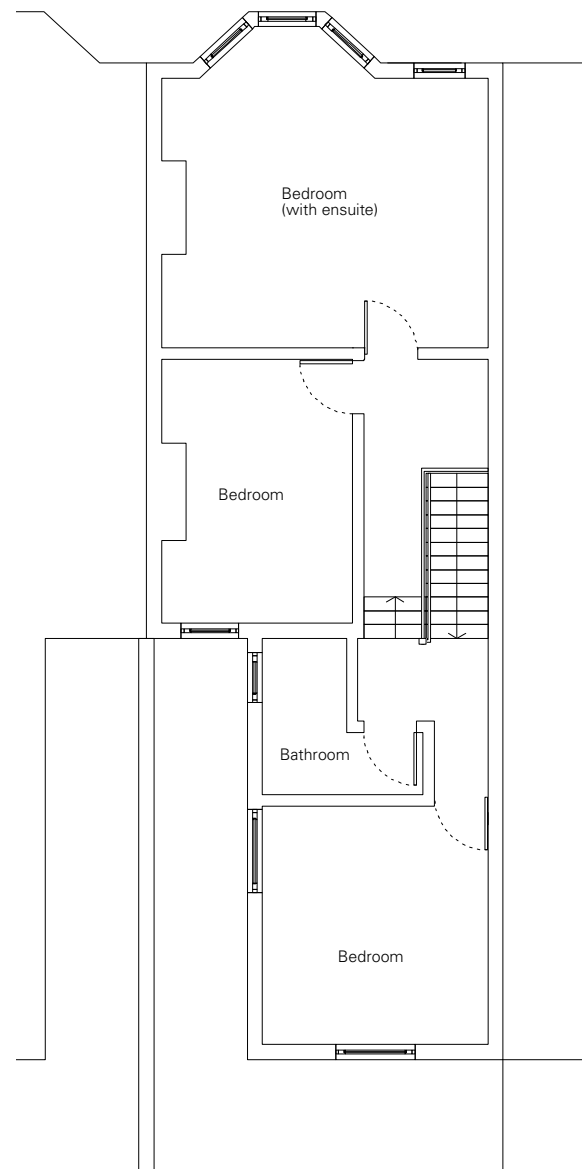
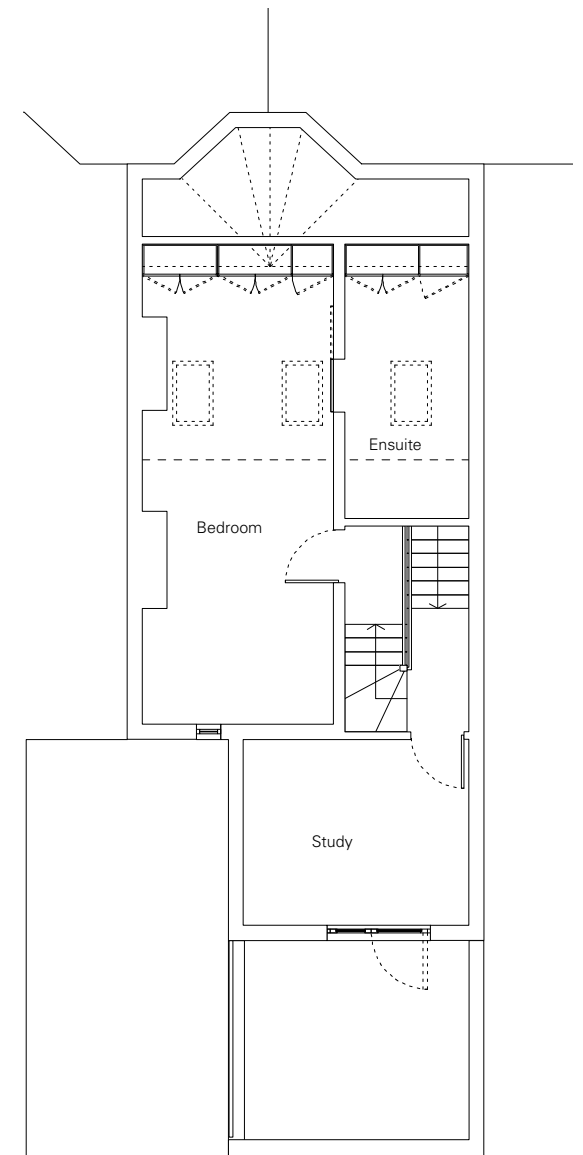


Ground Floor Plan



First Floor Plan



Second Floor Plan

revisions		
Rev. A - Windows/ Doors amended	27.03.14	

notes

all information contained in this drawing is sole copyright of hugh strange architects

project		71 Sumatra Road				
drawing		As Built Plans				
job. no.	20	dwg. no.	02	rev.	A	scale 1:100
issued for		Information		date 25.03.14		