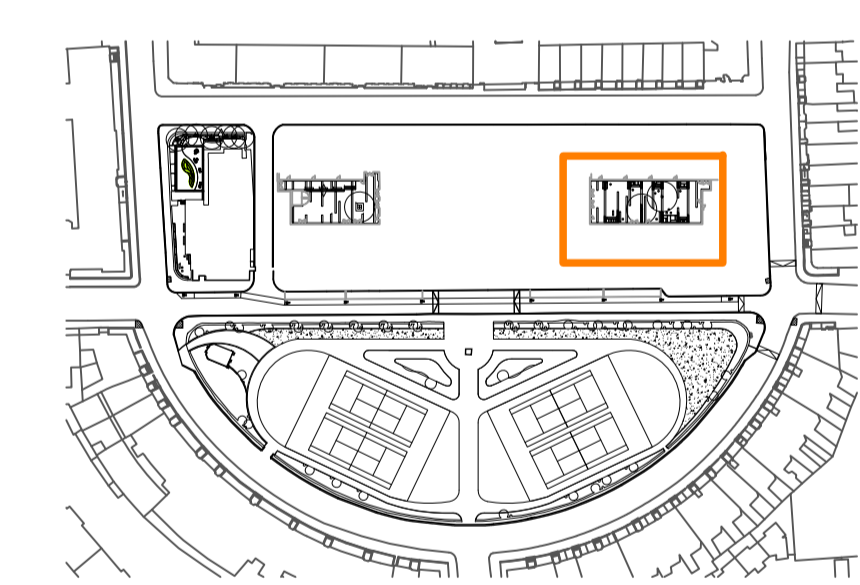
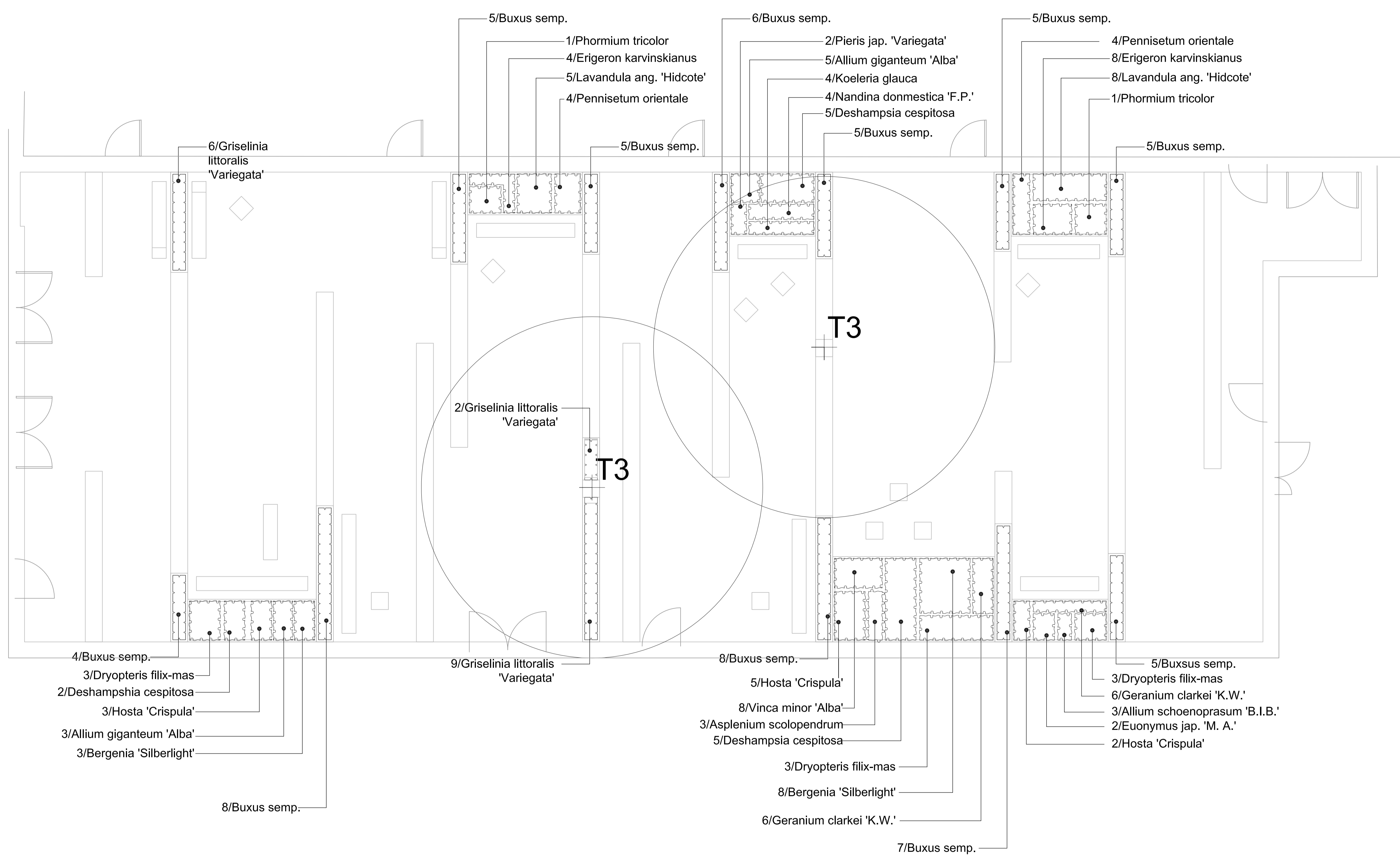


PLANT LIST:

| COURTYARDS | | | | |
|-------------------|------|--|--------------------------------------|------|
| NO. | QTY. | NAME | COMMON NAME | NOTE |
| TREES | | | | |
| T1 | 1 | Acer negundo | Box elder | |
| T2 | 2 | Betula pendula | Birch tree | |
| T3 | 3 | Betula pendula 'Dalecarlica' | Swedish birch tree | |
| T4 | 1 | Fagus sylvatica | Common beech | |
| T5 | 1 | Prunus pissia | Bist cherry | |
| T6 | 2 | Sorbus intermedia | Swedish Whitebeam | |
| HEDGING | | | | |
| 63 | | Buxus sempervirens arborescens | Common Box | |
| 51 | | Griselinia littoralis | New Zealand broadleaf | |
| 70 | | Griselinia littoralis 'Variegata' | New Zealand broadleaf 'Variegata' | |
| 12 | | Phyllostachya nigra | Black bamboo | |
| 26 | | Phytolacca laciniata | Portulaca laciniata | |
| 20 | | Viburnum opulus 'Aurum' | Guelder rose 'Aurum' | |
| SHRUBS | | | | |
| 10 | | Calluna vulgaris 'Aurea' | | |
| 25 | | Erica carnea 'Snow Queen' | | |
| 2 | | Euonymus japonica 'Microphylla' | Spindle 'Microphylla Albovariegatus' | |
| 8 | | Nandina domestica 'Fire Power' | Heavenly zebra 'Fire Power' | |
| 2 | | Pieris japonica 'Variegata' | Pieris 'Variegata' | |
| PERENNIALS | | | | |
| 8 | | Allium giganteum 'Alba' | Giant onion 'Alba' | |
| 3 | | Allium schoenoprasum 'Black Isle Blue' | Chives 'Black Isle Blue' | |
| 15 | | Bergenia 'Silberlicht' | Elephant's Ears 'Silberlicht' | |
| 24 | | Erigeron karvinskianus | Mexican fleabane | |
| 12 | | Geranium clarkei 'Kashmir White' | Geranium 'Kashmir White' | |
| 10 | | Hosta 'Crispula' | Curled plantain lily | |
| 16 | | Lavandula angustifolia 'Hidcote' | English lavender 'Hidcote' | |
| 9 | | Vinca minor 'Alba' | Small white periwinkle | |
| GRASSES | | | | |
| 11 | | Deschampsia cespitosa | Tufted hair grass | |
| 9 | | Koeleria glauca | Grey-blue koeleria | |
| 8 | | Miscanthus sinensis 'Variegatus' | Elephant 'Variegatus' | |
| 13 | | Pennisetum orientale | Oriental fountain grass | |
| 7 | | Phormium tricolor | New Zealand flax | |
| FERNS | | | | |
| 3 | | Asplenium scolopendrium | Harts tongue fern | |
| 12 | | Dryopteris filix-mas | Male fern | |
| BULBS | | | | |
| 25 | | Galanthus rivalis | Common snowdrop | |
| 25 | | Hyacinthoides non-scripta | Bluebell | |



KEY:

- Trees proposed
- Hedge planting
- Courtyard and The Hughes Parry Garden Shrub Planting

N

5m

0m

Rev | Date | By | Notes

Client: University Partnership Programme
 Project: Garden Halls, Bloomsbury, London

Title: **Trees & Planting Plan**

Scale: 1:50 @ A1

Project No: 1488-MW-T503
 Date: 02.09.2013
 Drawn: AS
 Checked: GM

MACFARLANE WILDER
 URBAN & ENVIRONMENTAL LAND PLANNING

84 Great Suffolk St London SE1 0BL T: 020 7960 2540 F: 020 7960 2541
 E: enquiry@macfarlane-wilder.com W: www.macfarlane-wilder.com

KEY:



Trees proposed



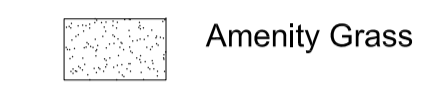
The Cartwright Gardens Shrub Planting



The Courtwright Gardens Planting Beds



Wildflower Meadow



Amenity Grass

Possible complete replanting of shrub layer in peripheral beds with plants retain where possible. Subject to LPA approval

Wildflower species

- 500/Victorian Plants for the planting bed:
- Abutilon pictum*
 - Anemone x hybrida*
 - Anthurium andraeanum*
 - Begonia rex*
 - Cortaderia selloana*
 - Crocsmia x crocosmiiflora*
 - Deutzia gracilis*
 - Lathyrus odoratus*
 - Rosa 'La France'*
 - Rosa wichuriana*
 - Senecio x hybridus*
 - Stephanotis floribunda*
 - Weigela florida*

- 200/Victorian Plants for the planting bed:
- Abutilon pictum*
 - Anemone x hybrida*
 - Anthurium andraeanum*
 - Begonia rex*
 - Cortaderia selloana*
 - Crocsmia x crocosmiiflora*
 - Deutzia gracilis*
 - Lathyrus odoratus*
 - Rosa 'La France'*
 - Rosa wichuriana*
 - Senecio x hybridus*
 - Stephanotis floribunda*
 - Weigela florida*

CARTWRIGHT GARDENS

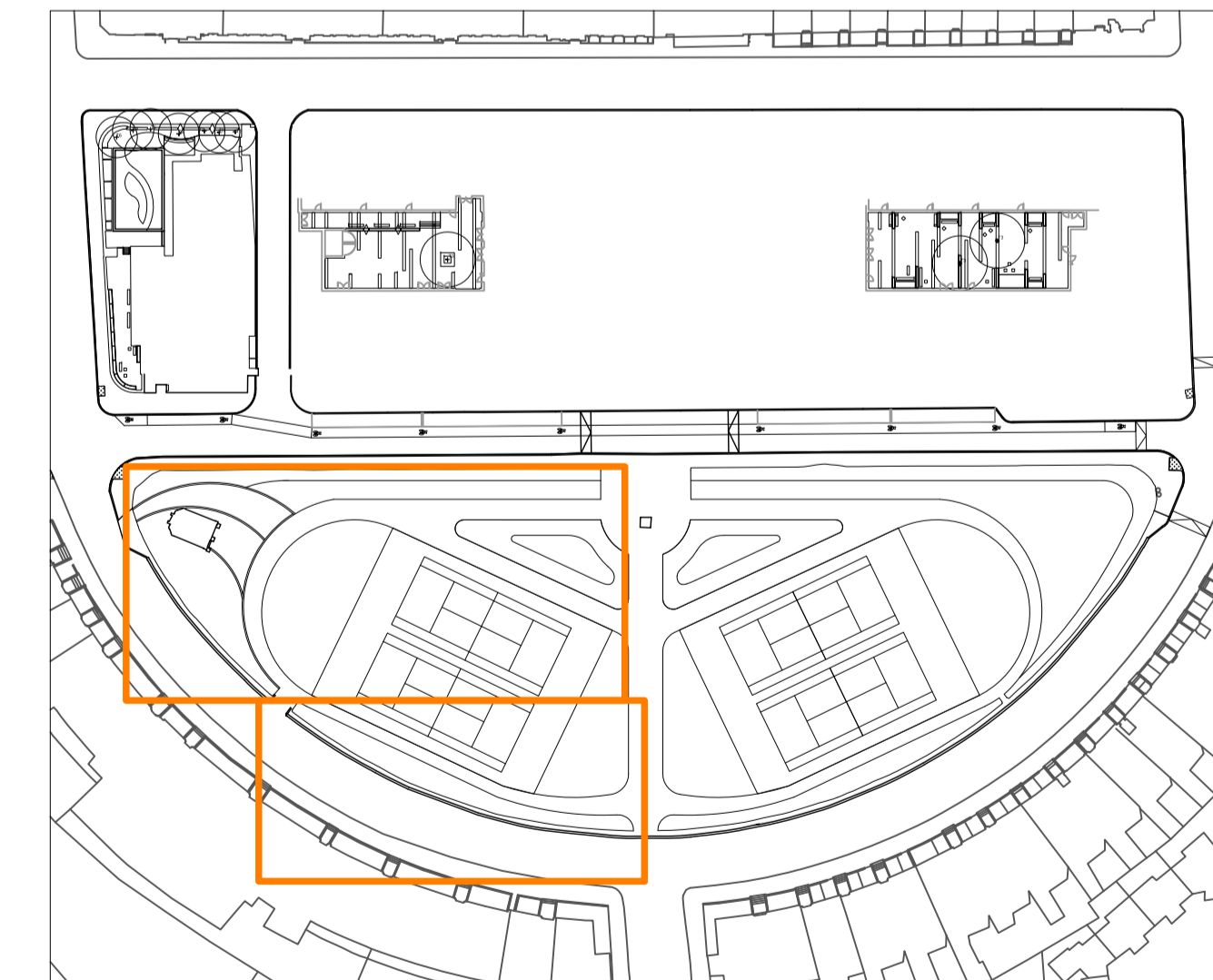
SHRUBS

| |
|---------------------------|
| Abutilon pictum |
| Anemone x hybrida |
| Anthurium andraeanum |
| Begonia rex |
| Cortaderia selloana |
| Crocsmia x crocosmiiflora |
| Deutzia gracilis |
| Lathyrus odoratus |
| Rosa 'La France' |
| Rosa wichuriana |
| Senecio x hybridus |
| Stephanotis floribunda |
| Weigela florida |

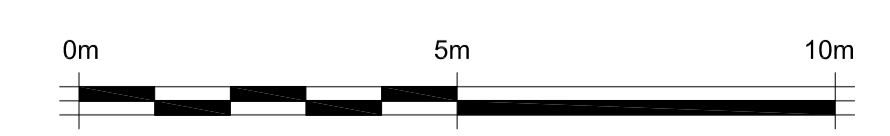
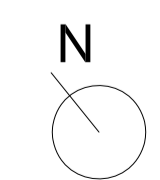
BSS 100% Bees and Butterfly Wildflowers by BostonSeeds

| % | Species Name | Common Name |
|---|-------------------------------|-----------------|
| 5 | <i>Acacia melanocoryna</i> | Wattle |
| 2 | <i>Achillea millefolium</i> | Yarrow |
| 2 | <i>Achillea vulgaris</i> | Yarrow |
| 7 | <i>Artemisia vulgaris</i> | Wormwood |
| 7 | <i>Borrago officinalis</i> | Stinging Nettle |
| 6 | <i>Centauria rubra</i> | Stinging Nettle |
| 6 | <i>Centauria nigra</i> | Stinging Nettle |
| 5 | <i>Centauria scaberrima</i> | Stinging Nettle |
| 3 | <i>Digitalis purpurea</i> | Foxglove |
| 1 | <i>Dipsacus salicifolius</i> | Teasel |
| 2 | <i>Echium vulgare</i> | Worm's Head |
| 1 | <i>Eupatorium cannabinum</i> | Worm's Head |
| 1 | <i>Geranium pratense</i> | St. Geranium |
| 8 | <i>Helianthus scaberrimus</i> | Wild Sunflower |
| 7 | <i>Knautia arvensis</i> | St. Mark's Wort |
| 5 | <i>Leucanthemum vulgare</i> | Shaggy Daisy |
| 2 | <i>Lolium comiculatum</i> | St. Paul's Wort |
| 2 | <i>Lupinus albus</i> | White Lupine |
| 1 | <i>Lupinus sativus</i> | Purple Lupine |
| 5 | <i>Maria moschata</i> | Black Mallow |
| 7 | <i>Onobrychis asperula</i> | St. Mark's Wort |
| 1 | <i>Origanum vulgare</i> | Marjoram |
| 5 | <i>Pappaver rhoeas</i> | Poppy |
| 4 | <i>Salvia verbenaca</i> | Wild Clary |
| 3 | <i>Scabiosa columbaria</i> | Scabiosa |
| 3 | <i>Tribolium pratense</i> | Clover |
| 1 | <i>Tribolium repens</i> | Clover |

LOCATION PLAN



Possible complete replanting of shrub layer in peripheral beds with plants retain where possible. Subject to LPA approval



Rev | Date | By | Notes

Client: University Partnership Programme
 Project: Garden Halls, Bloomsbury, London

Title: **Trees & Planting Plan**

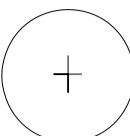
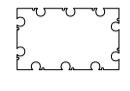
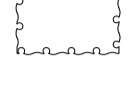

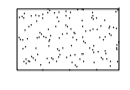
Scale: 1:100 @ A1

Drawn: AS | Date: 02.09.2013 | Checked: GM

MACFARLANE WILDER
 URBAN & ENVIRONMENTAL LAND PLANNING

64 Great Suffolk St London SE1 0BL | T: 020 7960 2540 | F: 020 7960 2541
 E: enquiry@macfarlane-wilder.com | W: www.macfarlane-wilder.com

KEY:

-  Trees proposed
-  The Cartwright Gardens Shrub Planting
-  The Courtwright Gardens Planting Beds
-  Wildflower Meadow
-  Amenity Grass

Wildflower species

Possible complete replanting of shrub layer in peripheral beds with plants retain where possible. Subject to LPA approval

- 200/Victorian Plants for the planting bed:
- Abutilon pictum*
 - Anemone x hybrida*
 - Anthurium andraeanum*
 - Begonia rex*
 - Cortaderia selloana*
 - Crocsmia x crocosmiiflora*
 - Deutzia gracilis*
 - Lathyrus odoratus*
 - Rosa 'La France'*
 - Rosa wichuriana*
 - Senecio x hybridus*
 - Stephanotis floribunda*
 - Weigela florida*

CARTWRIGHT GARDENS

SHRUBS

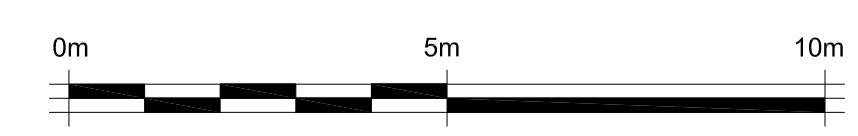
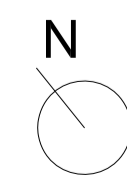
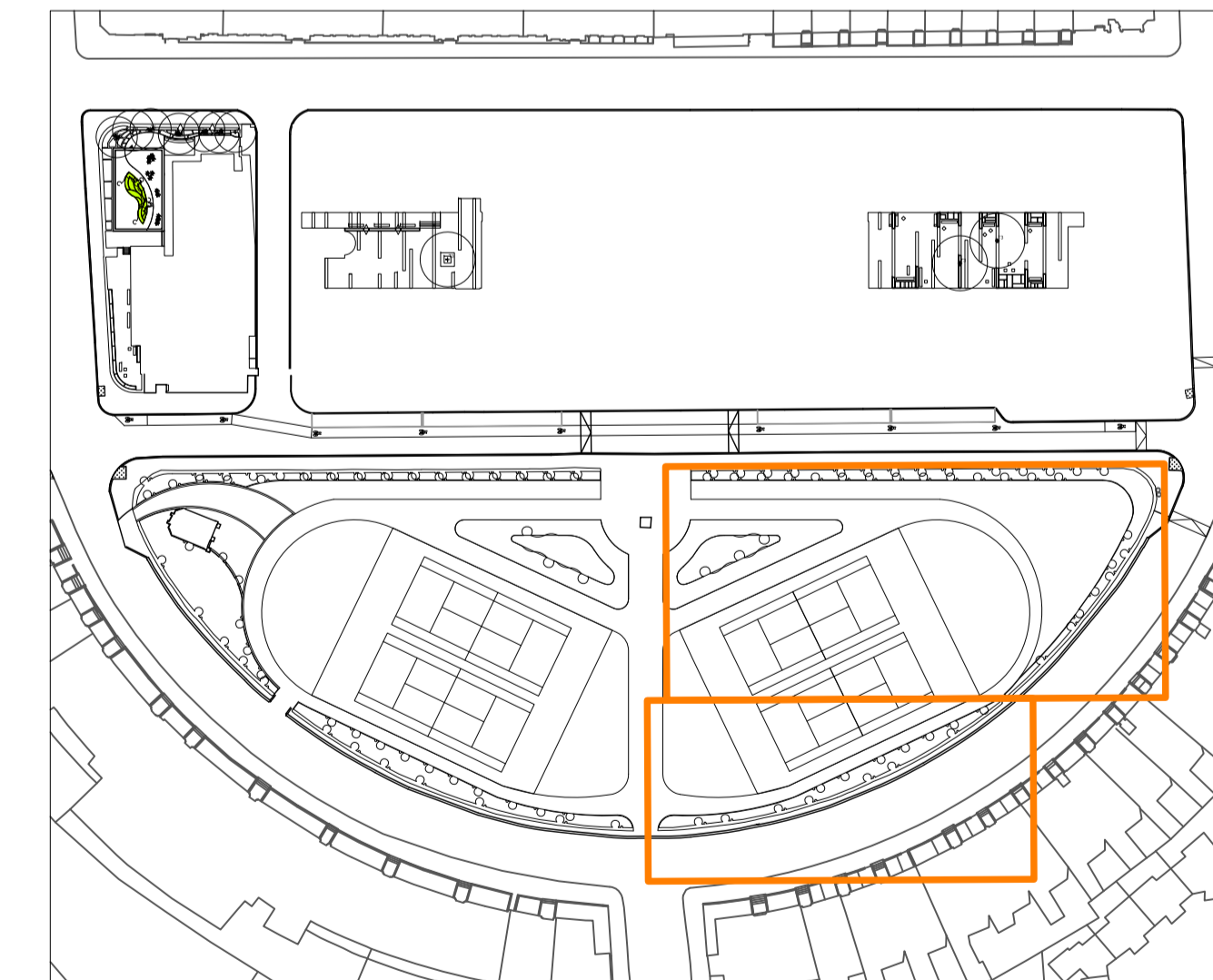
- Abutilon pictum*
- Anemone x hybrida*
- Anthurium andraeanum*
- Begonia rex*
- Cortaderia selloana*
- Crocsmia x crocosmiiflora*
- Deutzia gracilis*
- Lathyrus odoratus*
- Rosa 'La France'*
- Rosa wichuriana*
- Senecio x hybridus*
- Stephanotis floribunda*
- Weigela florida*

BSB 100%: Bees and Butterfly Wildflowers by BostonSeeds

| % | Species Name | Common Name |
|---|-------------------------------|--------------------|
| 5 | <i>Adiantum species</i> | Yarrow |
| 2 | <i>Antirrhinum species</i> | Vetch, Kidney |
| 7 | <i>Antirrhinum species</i> | Goatsbeard |
| 7 | <i>Borago officinalis</i> | Borage |
| 6 | <i>Centaurea cyanea</i> | Comfrey |
| 6 | <i>Centaurea nigra</i> | Knapweed, Common |
| 5 | <i>Centaurea rubra</i> | Knapweed, Greater |
| 3 | <i>Digitalis purpurea</i> | Foxglove |
| 1 | <i>Dracopis filiformis</i> | Teehel |
| 2 | <i>Echium vulgare</i> | Viper's Bugloss |
| 1 | <i>Eupatorium cannabinum</i> | Ajimsony Hemp |
| 1 | <i>Geranium pratense</i> | Marsh Geranium |
| 6 | <i>Helianthus scaberrimus</i> | Deaf Nettle |
| 7 | <i>Knautia arvensis</i> | Scabious, Field |
| 5 | <i>Leucanthemum vulgare</i> | Osprey Daisy |
| 2 | <i>Lotus corniculatus</i> | Bin's Foot Trefoil |
| 2 | <i>Lycnis flos-cuculi</i> | Ragged Robin |
| 1 | <i>Lytisum salicaria</i> | Purple Loosestrife |
| 6 | <i>Melilotus alba</i> | White Mallow |
| 7 | <i>Onopordium acrotholium</i> | Sambucus |
| 1 | <i>Origanum vulgare</i> | Marjoram |
| 5 | <i>Papaver rhoeas</i> | Poppy Field |
| 4 | <i>Rosa rubra</i> | Wild Rose |
| 3 | <i>Scabiosa columbata</i> | Scabious, Small |
| 3 | <i>Tritium pratense</i> | Chow, Red |
| 1 | <i>Tritium repens</i> | Chow, White |

Possible complete replanting of shrub layer in peripheral beds with plants retain where possible. Subject to LPA approval

LOCATION PLAN



Rev | Date | By | Notes

Client: University Partnership Programme
 Project: Garden Halls, Bloomsbury, London

Title: **Trees & Planting Plan**

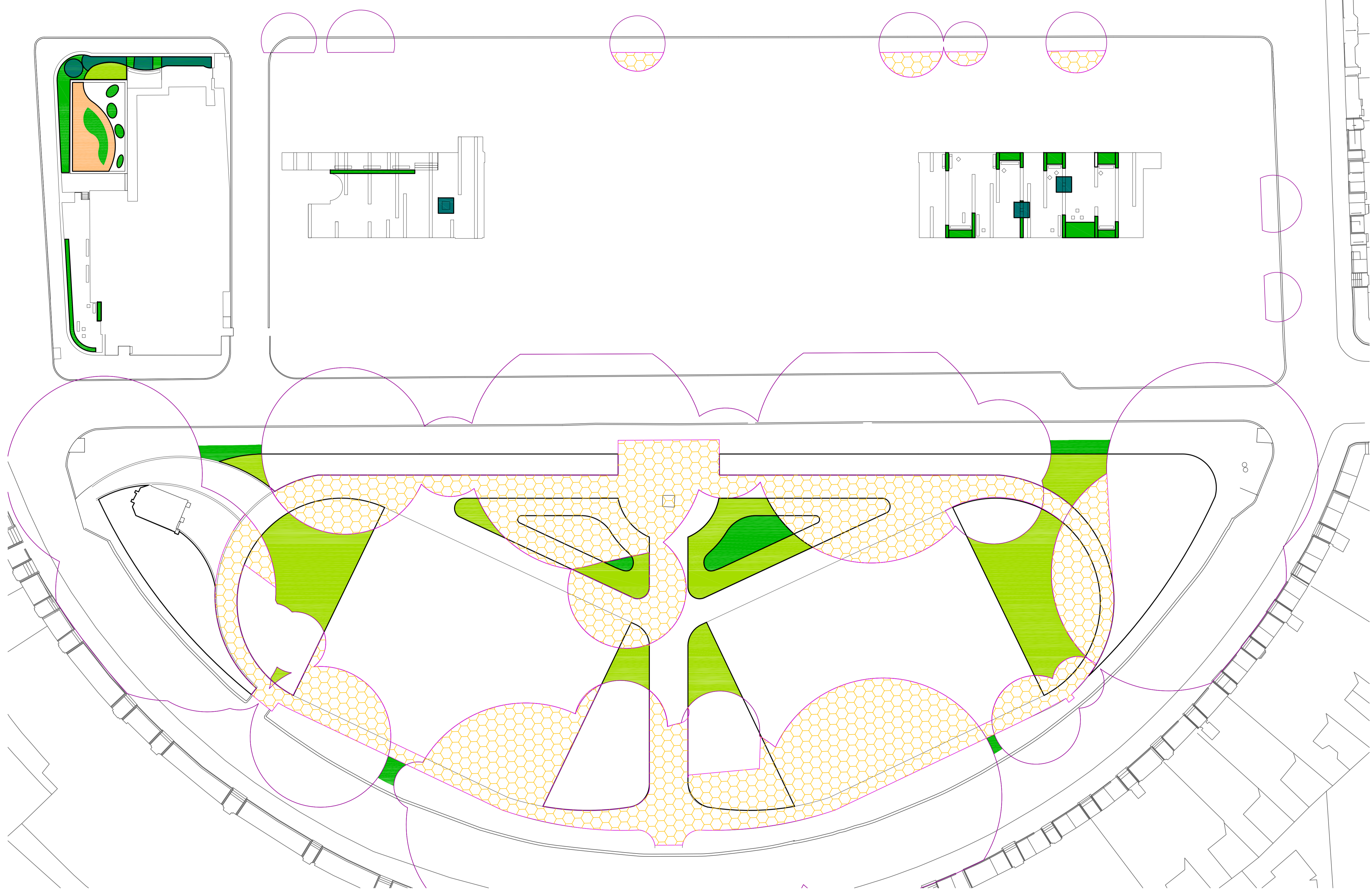
Scale: 1:100 @ A1

Drawn: AS
 Date: 02.09.2013
 Checked: GM

MACFARLANE WILDER
 URBAN & ENVIRONMENTAL LAND PLANNING

64 Great Suffolk St London SE1 0BL T: 020 7960 2540 F: 020 7960 2541
 E: enquiry@macfarlane-wilder.com W: www.macfarlane-wilder.com





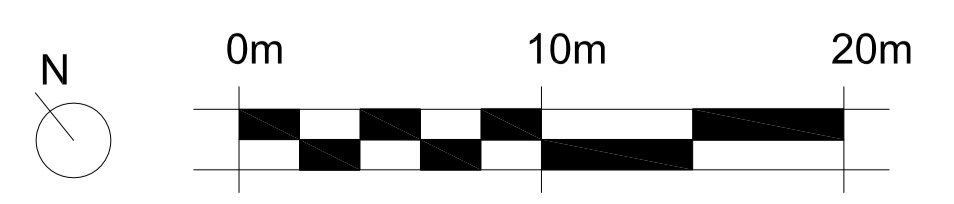
- KEY:**
- Imported Topsoil
Amenity Grass areas
200mm depth
 - Imported Topsoil
Shrub and hedges areas
450mm depth
 - Imported Topsoil
Trees areas
1200mm depth
 - Imported Topsoil
Green Roof
150-300-400mm depth
 - RPA - Root Protection Area
Ref. to Thomson Ecology Drawings
Tree Protection Plan - TPP01
Tree Constraints Plan - TCP01
and Arboricultural Survey, Impact
Assessment and Method Statement
 - Ground Protection
Ref. to Thomson Ecology Drawings
Tree Protection Plan - TPP01
and Arboricultural Survey, Impact
Assessment and Method Statement

NOTE:

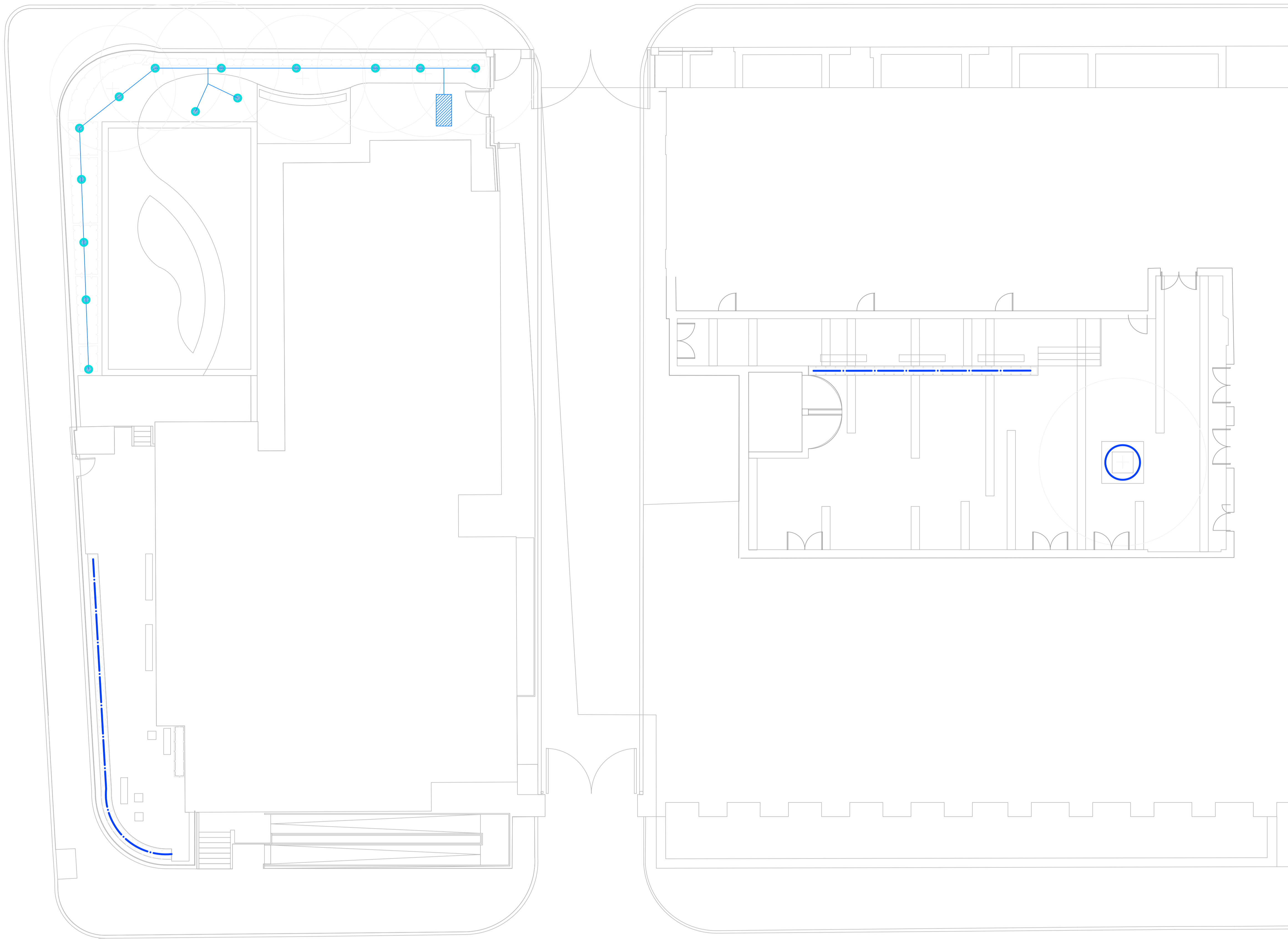
Typical tree pit size:
in soft landscape: 1.5mx1.5mx1.2m deep
in hard landscape: 2.0mx2.0mx1.2m deep

Work within RPA with existing trees to be carried out to British Standard 5837:2012 Recommendation for Trees in Relation to Construction. Import top soil to make up levels, depth as required.



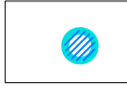


Soil within RPA to remain undisturbed.



| | | | |
|---|------------|------------|----------|
| Rev | Date | By | Notes |
| <p>Client: University Partnership Programme Project: Garden Halls, Bloomsbury, London</p> | | | |
| <p>Soiling Plan</p> | | | |
| <p>Discipline: Planning</p> | | | |
| Drawing No: | Date: | Scale: | Checked: |
| 1488-MW-T601 | 03.10.2013 | 1:250 @ A1 | GM |
| Drawn: | Date: | Scale: | Checked: |
| AS | 03.10.2013 | | GM |
| MACFARLANE WILDER URBAN & ENVIRONMENTAL LAND PLANNING | | | |
| 64 Great South St London SE1 0BL T: 020 7960 2540 F: 020 7960 2541 E: enquiry@macfarlane-wilder.com W: www.macfarlane-wilder.com | | | |

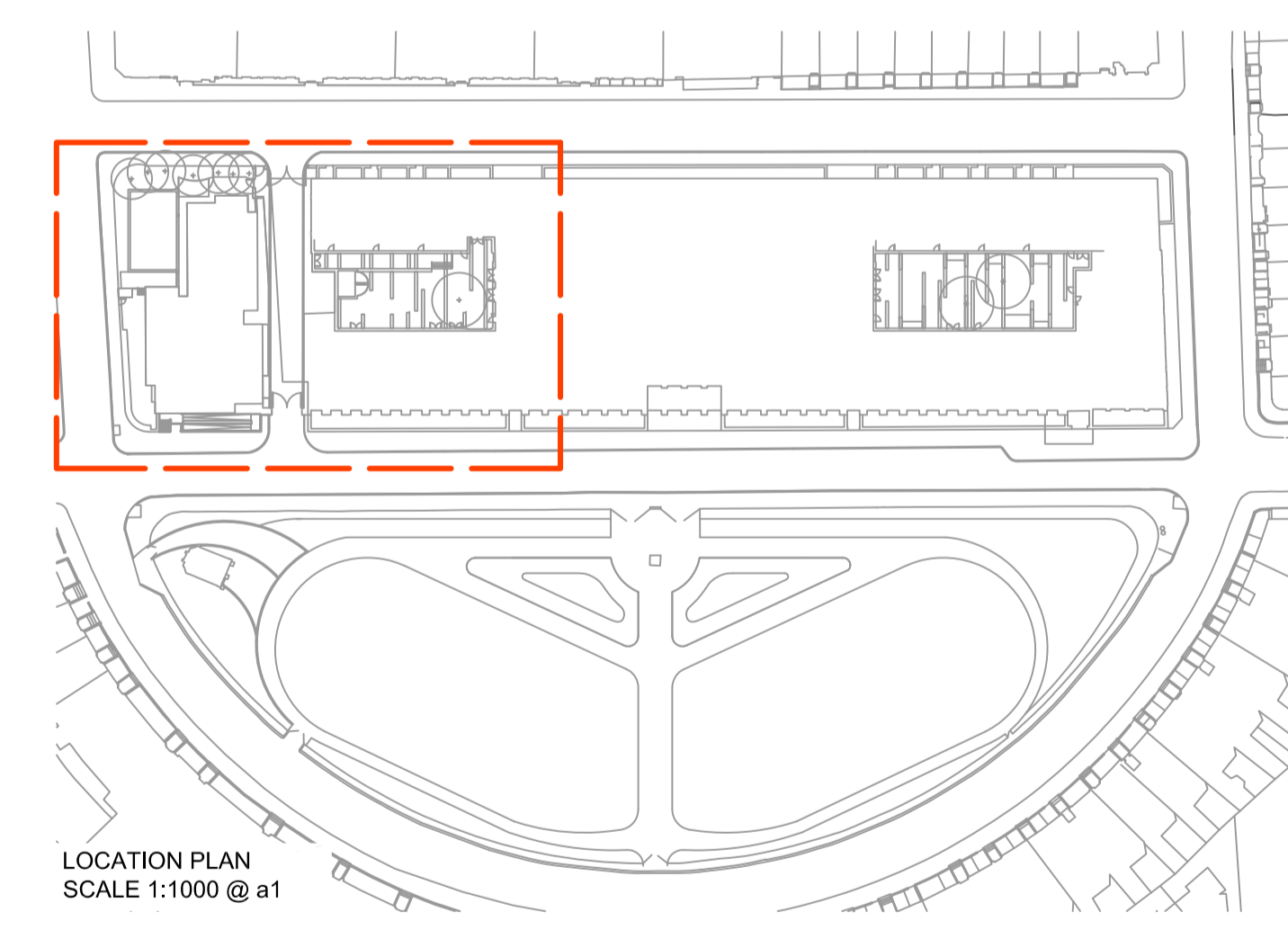


KEY:

-  Sub-Surface Pump Indicative location
-  Sub-Surface Irrigation Pipe Indicative route
-  Dropping Points Indicative location
-  Containerised Planting Irrigation Indicative
-  Tree Drips Indicative location

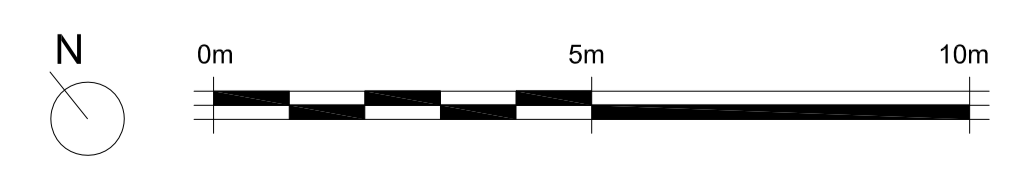
NOTE:

Drawing to be read together with the drawings:
 1488-MW-T502
 1488-MW-T503
 1488-MW-T601

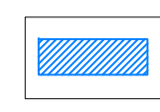


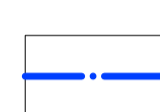



LOCATION PLAN
 SCALE 1:1000 @ a1

| Rev | Date | By | Notes |
|--|------|----|-------|
| <p>Client: University Partnership Programme Project: Garden Halls, Bloomsbury, London</p> <p>Title: Schematic Irrigation Plan Northern Courtyard</p> <p>Discipline: Planning</p> <p>Drawn to: 1488-MW-T701 Scale: 1:100 @ A1 Drawn: AS Date: 05.02.2014 Checked: GM</p> | | | |

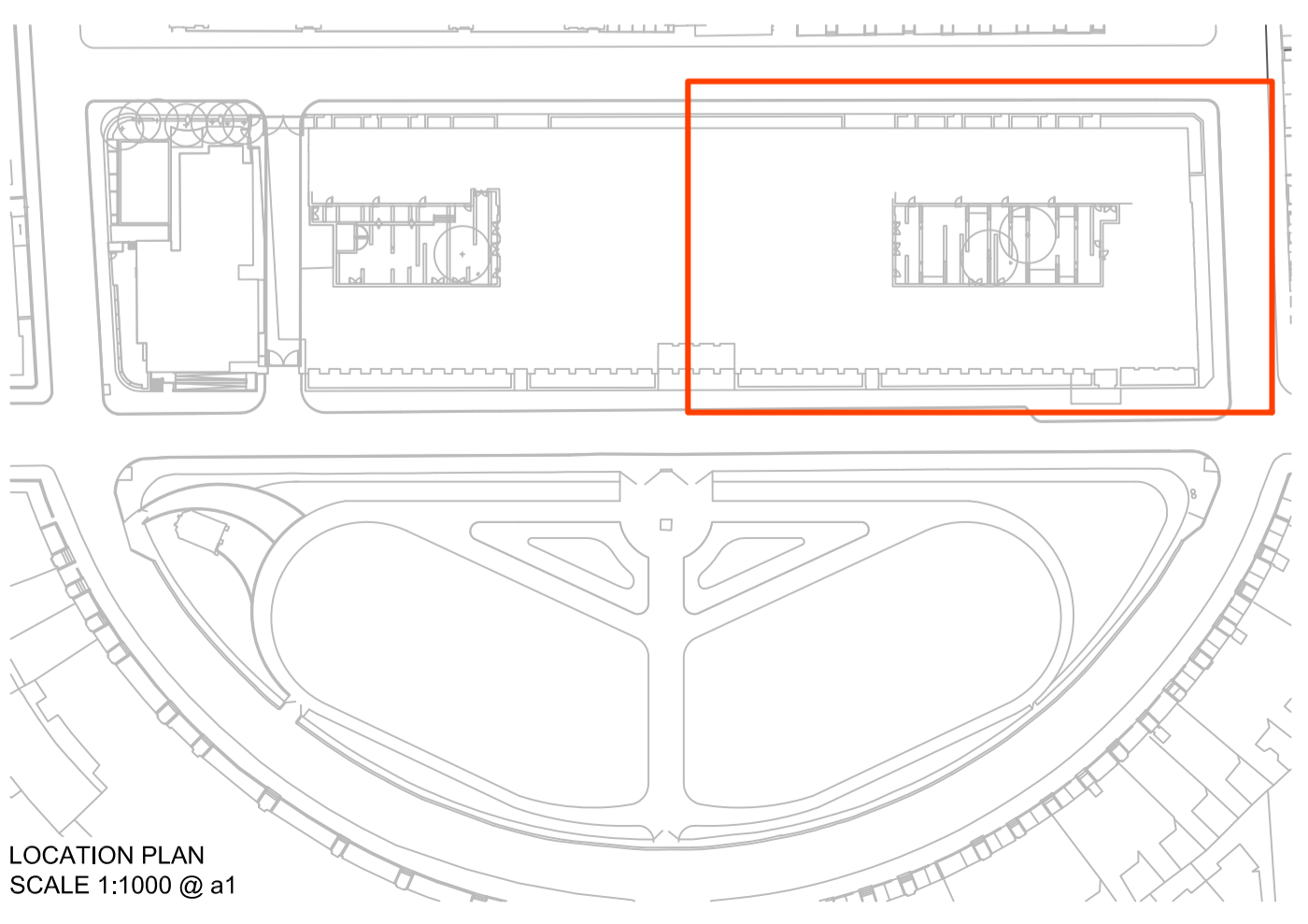
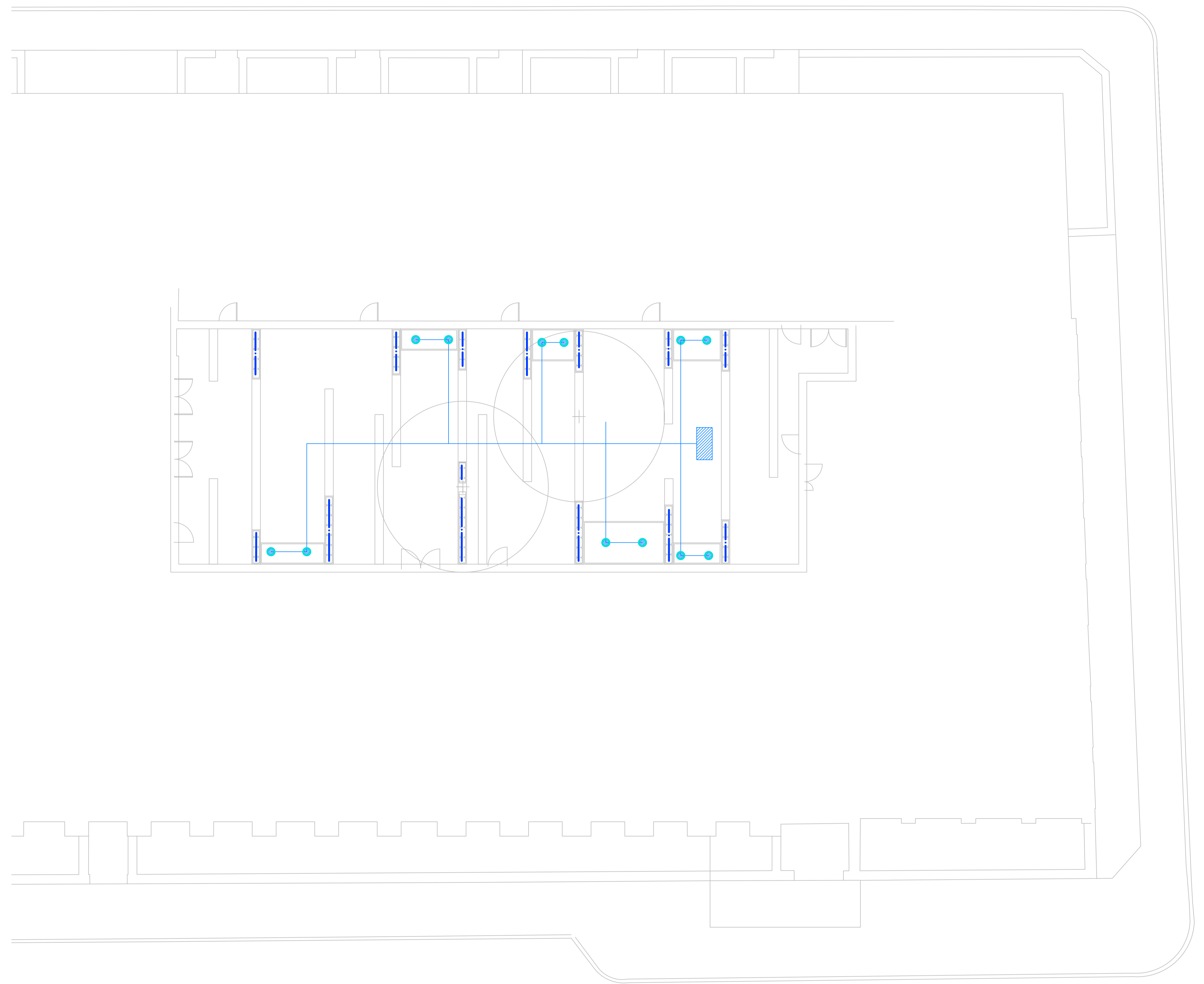


KEY:

-  Sub-Surface Pump
Indicative location
-  Sub-Surface Irrigation Pipe
Indicative route
-  Dropping Points
Indicative location
-  Containerised Planting Irrigation
Indicative
-  Tree Drips
Indicative location

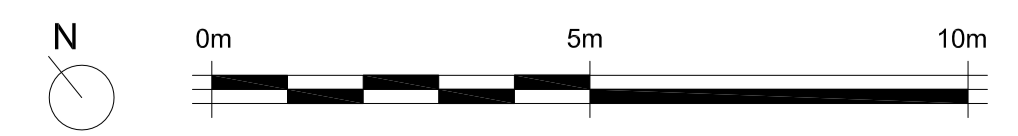
NOTE:

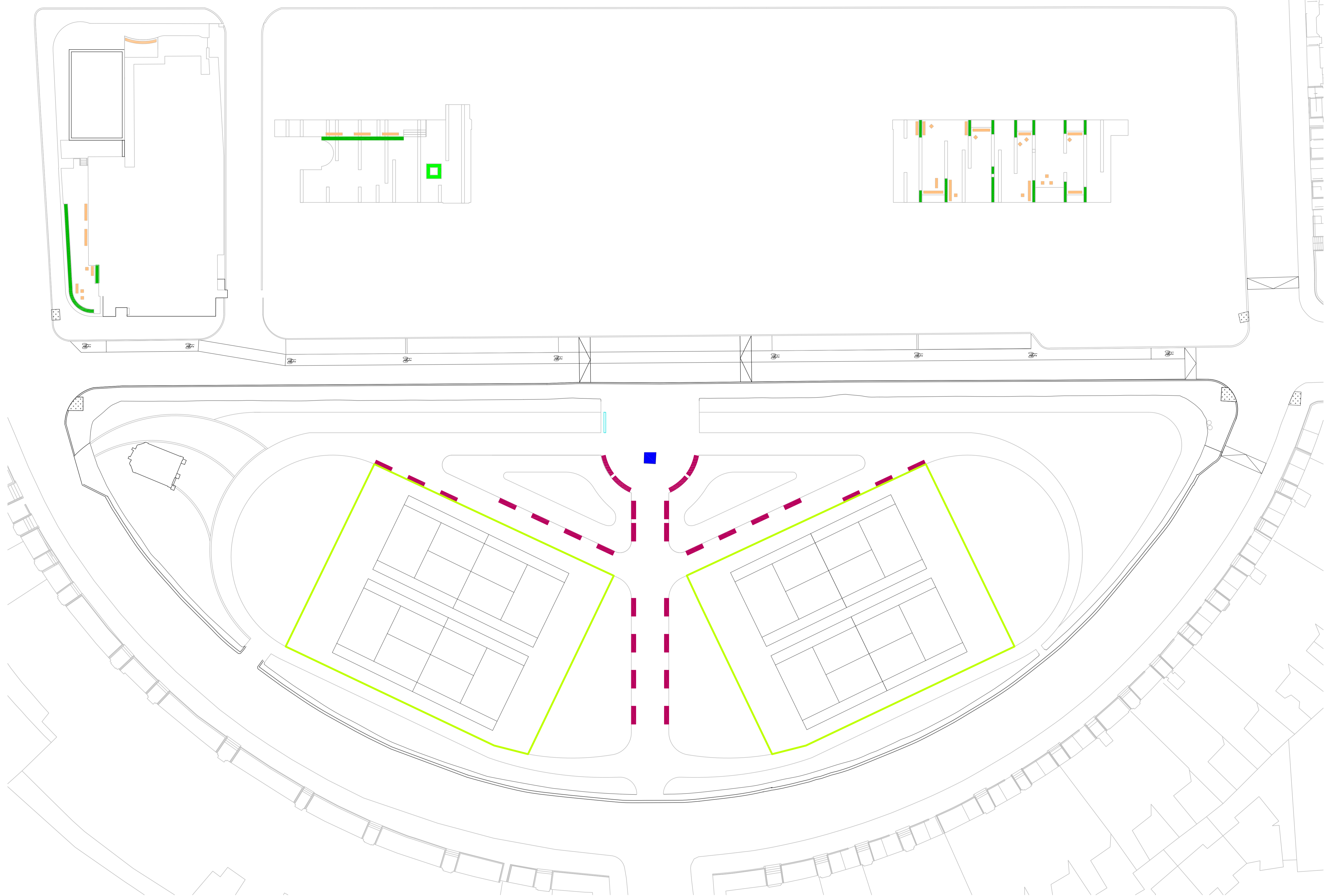
Drawing to be read together
with the drawings:
1488-MW-T502
1488-MW-T503
1488-MW-T601



LOCATION PLAN
SCALE 1:1000 @ a1

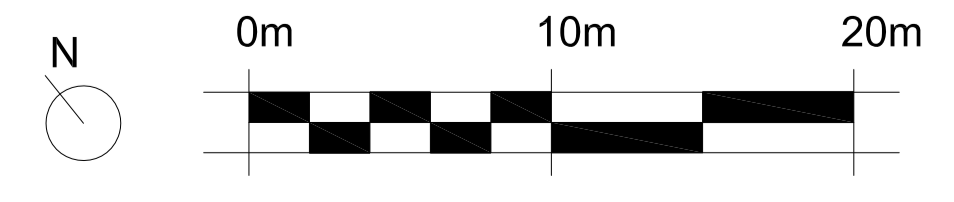
| Rev | Date | By | Notes |
|--|------------|----------|-------|
| Project: University Partnership Programme Garden Halls, Bloomsbury, London | | | |
| Title: Schematic Irrigation Plan Southern Courtyard | | | |
| Discipline: Planning | | | |
| Drawn to: | Scale: | | |
| 1488-MW-T702 | 1:100 @ A1 | | |
| Drawn: | Date: | Checked: | |
| AS | 27.09.2013 | GM | |





- KEY:**
- The Cartwright Gardens
Chapelet Bench
by LAB23
 - The Cartwright Gardens
John Cartwright Statue
Specialist cleaning work
for the Statue and plinth
 - Stuent's Courtyards and The Hughes Parry Garden
Serpentine, various seating units and moveable wooden blocks
by Factory Furniture
 - Stuent's Courtyards and The Hughes Parry Garden
Galvanised Planter 1500x500x500mm
by BSpoke Design
 - Stuent's Northern Courtyard
Galvanised Tree Planter 2000x2000x800mm
by BSpoke Design
 - Notice Board
Wellingborough Broxap
 - The Cartwright Gardens
Main entrance Gates
 - The Cartwright Gardens
Existing Boundary Fencing
repainted to match existing
 - The Cartwright Gardens
Weld Mesh
4m height
Post at 2.5m nominal distance apart
Post section 60x40mm 'pylon' style
Wire size: vertical wires 6mm,
Twin horizontal wires 2x6mm,
Mesh pattern 200x55mm
Color Green

| | | | |
|---|----------------------|------------------------|----------------------|
| <small>Rev</small> | <small>Date</small> | <small>By</small> | <small>Notes</small> |
| University Partnership Programme | | | |
| Garden Halls, Bloomsbury, London | | | |
| The Furniture Plan | | | |
| Planning | | | |
| <small>Contract No.</small> | <small>Scale</small> | | |
| 1488-MW-T801 | 1:250 @ A1 | | |
| <small>Drawn</small> | <small>Date</small> | <small>Checked</small> | <small>GM</small> |
| AS | 08.10.2013 | GM | |
| MACFARLANE WILDER | | | |
| <small>URBAN & ENVIRONMENTAL LAND PLANNING</small> | | | |
| | | | |
| <small>84 Great Suffolk St London SE1 0BL T: 020 7960 2540 F: 020 7960 2541</small> | | | |
| <small>E: enquiry@macfarlane-wilder.com W: www.macfarlane-wilder.com</small> | | | |





| NO. | NAME | SPECIFICATION | DENSITY | SPACING | DR REF: | DR REF: | TOTALS | NOTES |
|-------------------|---|---------------------------------------|---|----------|--------------|--------------|--------|------------------------|
| COURTYARDS | | | | | 1488-MW-T502 | 1488-MW-T503 | | |
| TREES | | COMMON NAME | | | | | | |
| T1 | Acer negundo | Box elder | Specimen, 4xtr, 20-25cm girth, min. height 4m, clear stem min. 1.7m; WRB | as shown | n/a | 1 | 1 | |
| T2 | Betula pendula | Birch tree | Specimen, 4xtr, 20-25cm girth, min. height 4m, clear stem min. 1.7m; WRB | as shown | n/a | 2 | 2 | |
| T3 | Betula pendula 'Dalecarlica' | Swedish birch tree | Specimen, 4xtr, min. height 3m, min width 1.5m; WRB | as shown | n/a | 1 | 2 | Plant in planting pits |
| T4 | Fagus sylvatica | Common beech | Specimen, 4xtr, 20-25cm girth, min. height 4m, clear stem min. 1.7m; WRB | as shown | n/a | 1 | 1 | |
| T5 | Prunus padus | Bird cherry | Specimen, 4xtr, 20-25cm girth, min. height 4m, clear stem min. 1.7m; WRB | as shown | n/a | 1 | 1 | |
| T6 | Sorbus intermedia | Swedish Whitebeam | Specimen, 4xtr, 20-25cm girth, min. height 4m, clear stem min. 1.7m; WRB | as shown | n/a | 2 | 2 | |
| HEDGING | | | | | | | | |
| H1 | Buxus sempervirens arborescens | Common Box | Clipped Instant Hedge 4xtr; 35-40cm H; 40cm W; 1m L (clipped on site to suit design as needed); C | 4/sqm | 500mm | 0 | 63 | Courtyards |
| H2 | Gristelinia littoralis | New Zealand broadleaf | Specimen, 3xtr., min height 100-150cm, CG | 3/sqm | 550mm | 53 | 0 | 53 |
| H3 | Griselinia littoralis 'Variegata' | New Zealand broadleaf 'Variegata' | Specimen, 3xtr., min height 100-150cm, CG | 4/sqm | 500mm | 53 | 17 | 70 |
| H4 | Phyllostachys nigra | Black bamboo | Specimen, 3xtr., min height 100-150cm, CG | 3/sqm | 550mm | 12 | 0 | 12 |
| H5 | Prunus lusitanica | Portuguese laurel | Specimen, 3xtr., min height 125-150cm; CG | 3/sqm | 550mm | 31 | 0 | 31 |
| H6 | Viburnum opulus 'Aureum' | Guelder rose 'Aureum' | Transplanted shrub, 5 breaks, min height 100-150cm, | 3/sqm | 550mm | 25 | 0 | 25 |
| SHRUBS | | | | | | | | |
| | Calluna vulgaris 'Aurea' | | 2IC | | | 10 | 0 | 10 |
| | Erica carnea 'Snow Queen' | Winter heath | 2IC | | | 25 | 0 | 25 |
| | Euonymus japonicus 'Microphyllus Albovariegata' | Spindle 'Microphyllus Albovariegatus' | Branched, 30-40cm, 4L, CG | 5/sm | 450mm | 0 | 2 | 2 |
| | Nandina domestica 'Fire Power' | Heavenly bamboo 'Fire Power' | Branched, 30-40cm, 3L, CG | 7/sqm | 350mm | 4 | 4 | 8 |
| | Pieris japonica 'Variegata' | Pieris 'Variegata' | Branched, 30-40cm, 4L, CG | 5/sm | 450mm | 0 | 2 | 2 |
| PERENNIALS | | | | | | | | |
| | Allium giganteum 'Alba' | Giant onion Alba | 60-80cm, 2L C | 8/sqm | 300mm | 0 | 8 | 8 |
| | Allium schoenoprasum 'Black Isle Blush' | Chives 'Black Isle Blush' | 30-40cm, 3L C, Branched | 8/sqm | 300mm | 0 | 3 | 3 |
| | Bergenia 'Silberlicht' | Elephant's Ears Silberlicht' | | 5/sqm | 450mm | 4 | 11 | 15 |
| | Erigeron karvinskianus | Mexican fleabane | 2IC | 7/sqm | 350mm | 12 | 12 | 24 |
| | Geranium clarkei 'Kashmir White' | Geranium Kashmir White | 30-40cm, 4L C, Branched | 11/sqm | 300mm | 0 | 12 | 12 |
| | Hosta 'Crispula' | Curled plantain lily | 30-40cm, 5-7.5L C, Branched | 5/sqm | 450mm | 0 | 10 | 10 |
| | Lavandula angustifolia 'Hidcote' | English lavender Hidcote' | 30-40cm, 3L C, Branched | 5/sqm | 450mm | 7 | 9 | 16 |
| | Vinca minor 'Alba' | Small white periwinkle | 30-40cm, 4L C, Branched | 11/sqm | 300mm | 0 | 8 | 8 |
| GRASSES | | | | | | | | |
| | Deschampsia cespitosa | Tufted hair grass | 30-40cm, 5-7.5L C | 3/sqm | 550mm | 2 | 9 | 11 |
| | Koeleria glauca | Grey-blue koeleria | 15-20cm, 3L C | 7/sqm | 350mm | 4 | 5 | 9 |
| | Miscanthus sinensis 'Variegatus' | Eulalia 'Variegata' | 50-60cm, 10L C | 2/sqm | 650mm | 6 | 0 | 6 |
| | Pennisetum orientale | Oriental fountain grass | 30-40cm, 5-7.5L C | 3/sqm | 550mm | 5 | 8 | 13 |
| | Phormium tricolor | New Zealand flax | 50-600cm, 10L C | 2/sqm | 650mm | 5 | 2 | 7 |
| FERNS | | | | | | | | |
| | Asplenium scolopendrium | Harts tongue fern | 30-40cm, 5-7.5L C | 8/sqm | 400mm | 0 | 3 | 3 |
| | Dryopteris filix-mas | Male fern | 30-40cm, 5-7.5L C | 3/sqm | 550mm | 2 | 10 | 12 |
| BULBS | | | | | | | | |
| | Galanthus nivalis | Common snowdrop | 8/9cm, bulb | 10/sqm | 150mm | 25 | 0 | 25 |
| | Hyacinthoides non scripta | Bluebell | 8/9cm, bulb | 10/sqm | 150mm | 25 | 0 | 25 |

GREEN ROOF

Astelia
Brachyglottis monroi
Centranthus ruber
Centranthus ruber 'Albus'
Cistus × cyprius AGM
Cortaderia selloana
Daboecia cantabrica 'Bicolor'
Elymus magellanicus
Erica terminalis
Imperata cylindrica Rubra
Koeleria glauca
Phormium Tricolor
Rosmarinus officinalis 'Miss Jessopp's
Thymus 'Highdown'
Uncinia rubra
Upright' AGM
Vinca minor f. alba 'Gertrude Jekyll'

CARTWRIGHT GARDENS

PLANTS FOR VICTORIAN BEDS

Abutilon pictum
 Anemone x hybrida
 Anthurium andraeanum
 Begonia rex
 Cortaderia selloana
 Crocosmia x crocosmiiflora
 Deutzia gracilis
 Lathyrus odoratus
 Rosa 'La France'
 Rosa wichuriana
 Senecio x hybridus
 Stephanotis floribunda
 Weigela florida

BSB 100%: Bees and Butterfly Wildflowers

| Species Name | Common Name | % |
|------------------------|---------------------|----------|
| Achillea millefolium | Yarrow | 5 |
| Anthyllis vulneraria | Vetch, Kidney | 2 |
| Aruncus dioicus | Goatsbeard | 7 |
| Borago Officinalis | Borage | 7 |
| Centaurea cyanus | Cornflower | 6 |
| Centaurea nigra | Knapweed, Common | 6 |
| Centaurea scabiosa | Knapweed, Greater | 5 |
| Digitalis purpurea | Foxglove | 3 |
| Dipsacus fullonum | Teasel | 1 |
| Echium vulgare | Viper's Bugloss | 2 |
| Eupatorium cannabinum | Agrimony, Hemp | 1 |
| Geranium pratense | Meadow Cranesbil | 1 |
| Helianthus gracilentus | Dwarf Sunflower | 8 |
| Knautia Arvensis | Scabious, Field | 7 |
| Leucanthemum vulgare | Oxeye Daisy | 5 |
| Lotus corniculatus | Bird's Foot Trefoil | 2 |
| Lychnis flos-cuculi | Ragged Robin | 2 |
| Lythrum salicaria | Purple Loosetrife | 1 |
| Malva moschata | Musk Mallow | 5 |
| Onobrychis viciifolia | Sainfoin | 7 |
| Origanum vulgare | Marjoram | 1 |
| Papaver rhoes | Poppy, Field | 5 |
| Salvia verbenaca | Wild Clary | 4 |
| Scabiosa columbaria | Scabious, Small | 3 |
| Trifolium pratense | Clover, Red | 3 |
| Trifolium repens | Clover, White | 1 |
| Phleum bertoloni | Small Cats Tail | |

Key:
 RB: Rootballed WRB: Wire Rootballed B:Bareroot 2L: 2 litre container C: Container Brks:Breaks F:Framework Ca:Canes

TOTAL PAGES: 3no.